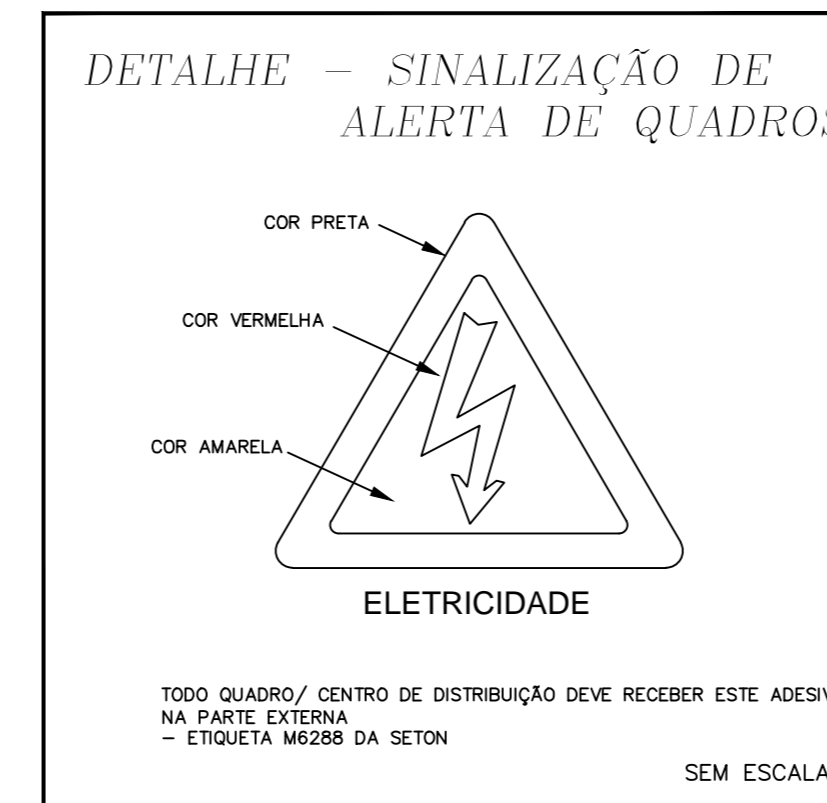
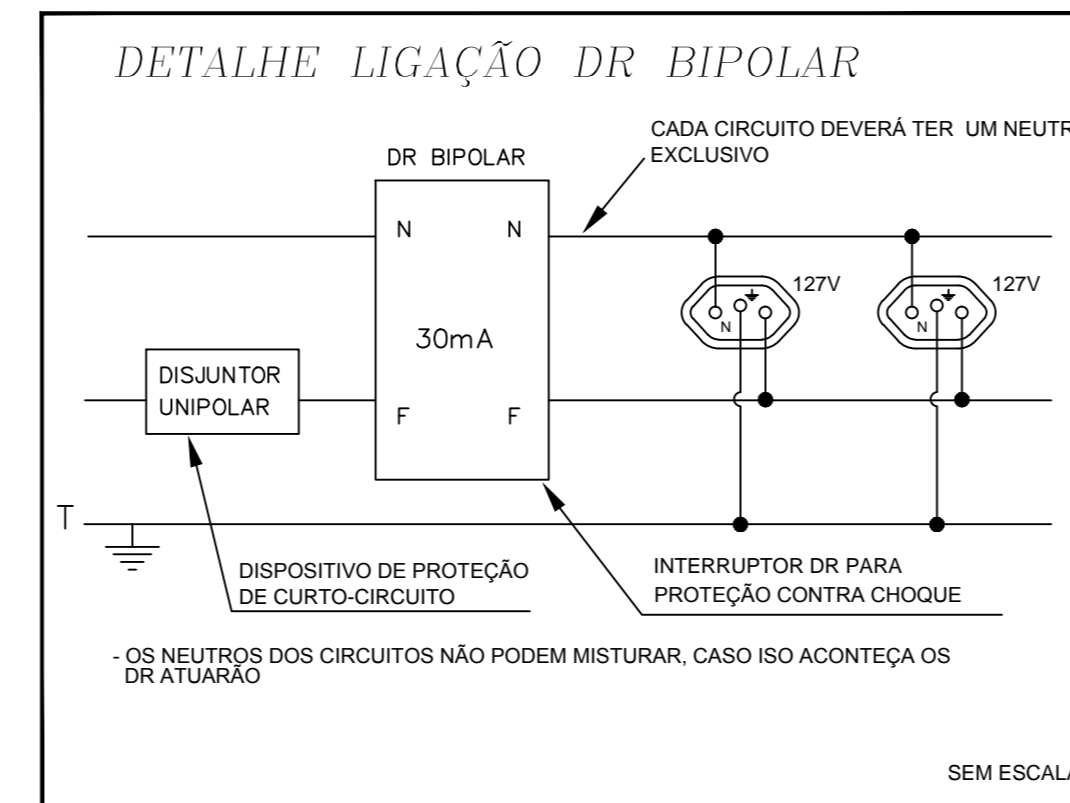
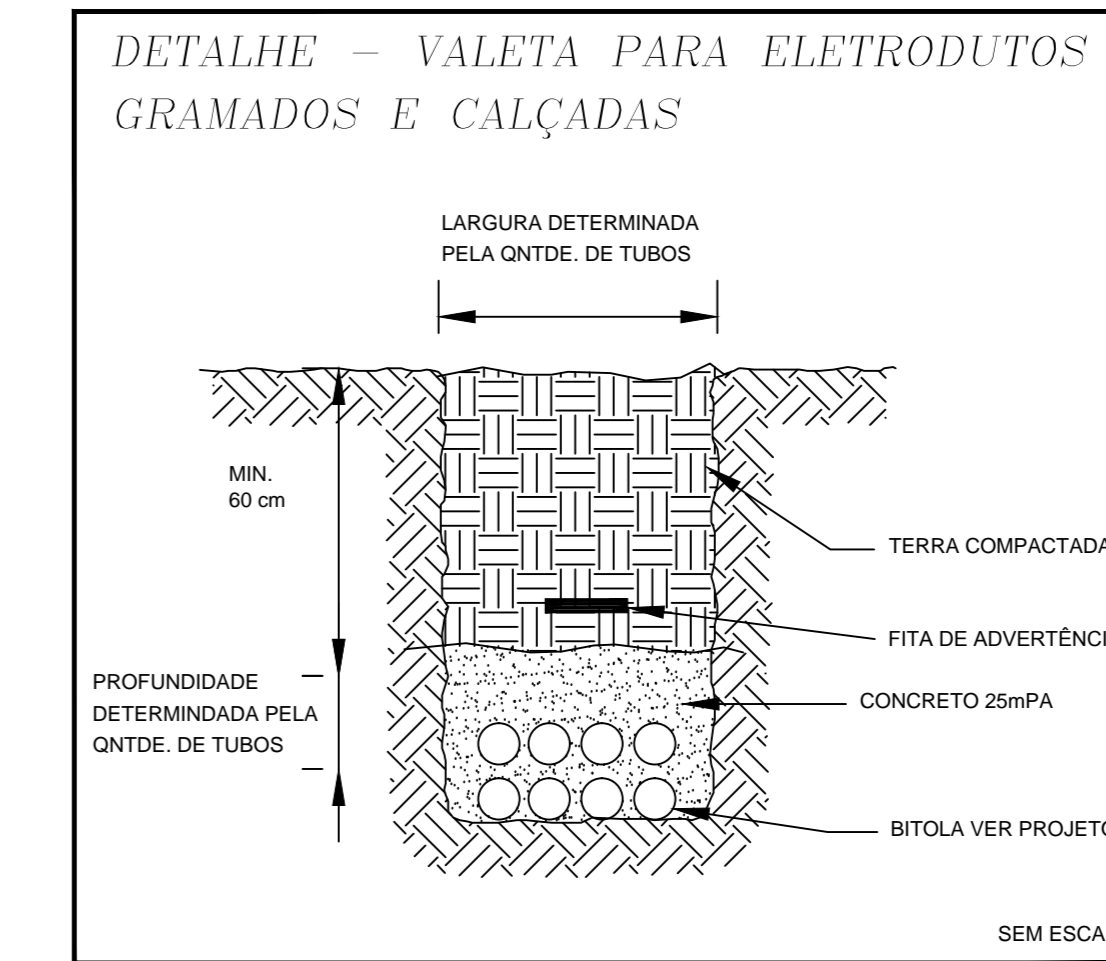
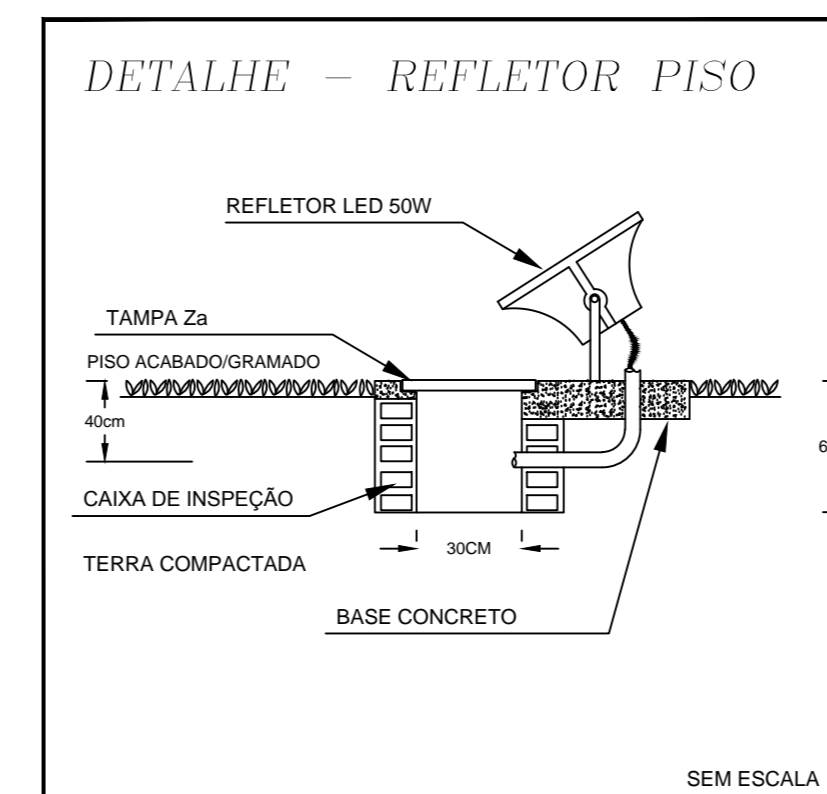
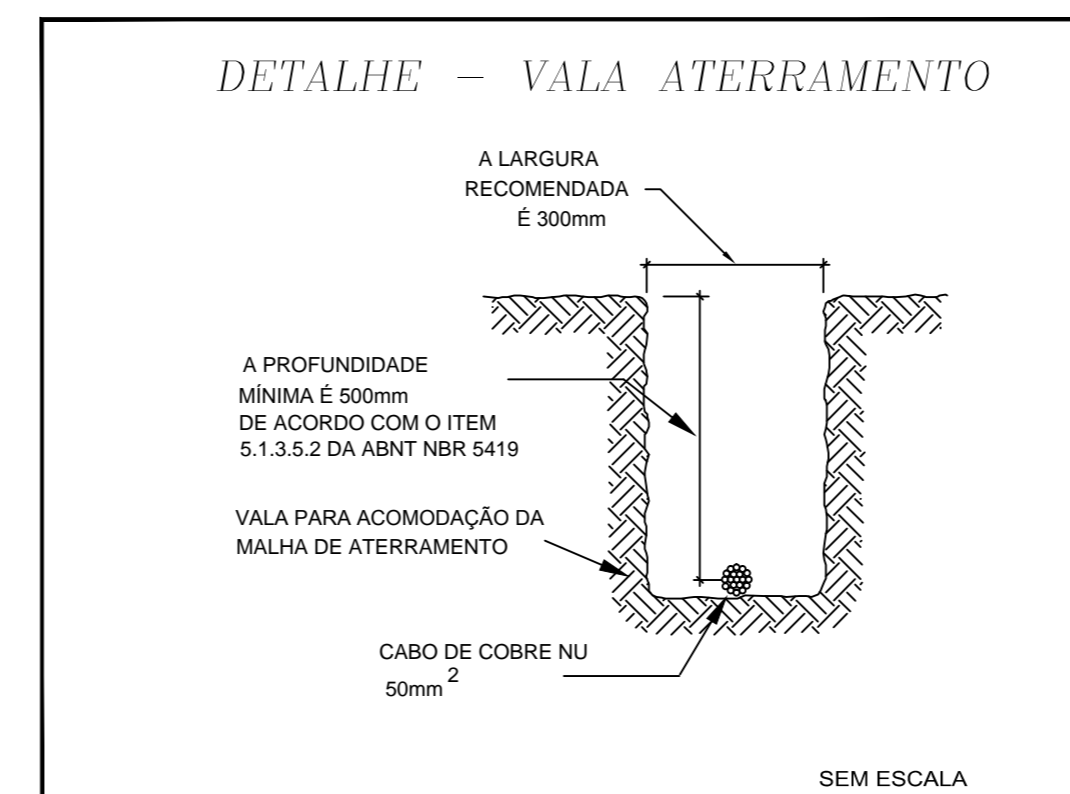
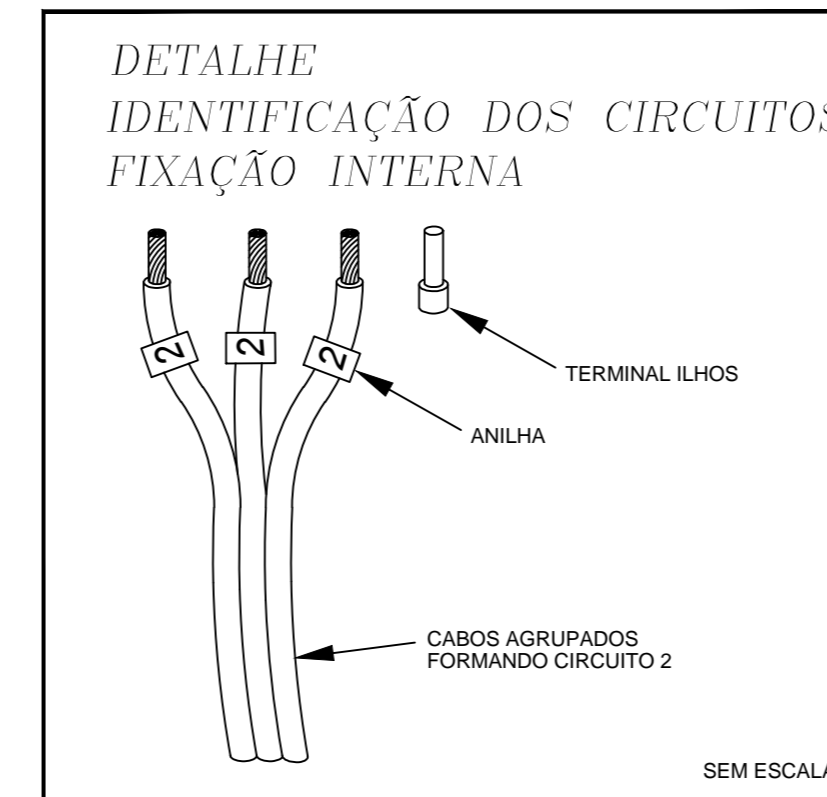
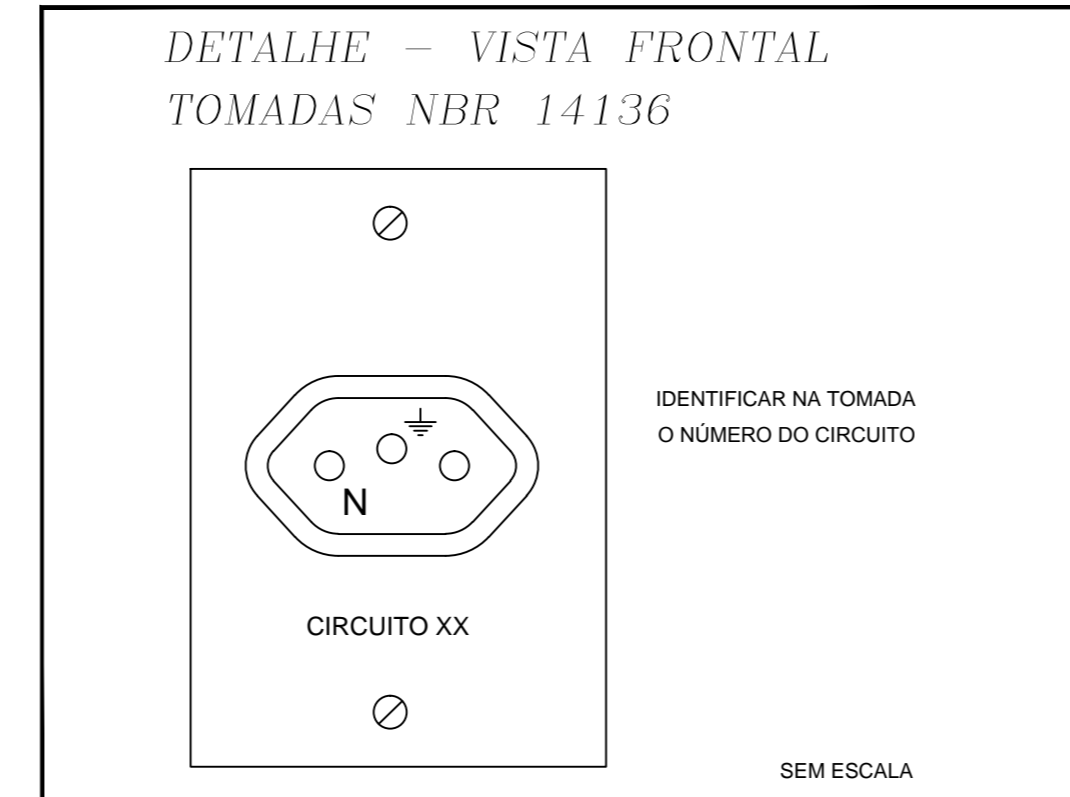
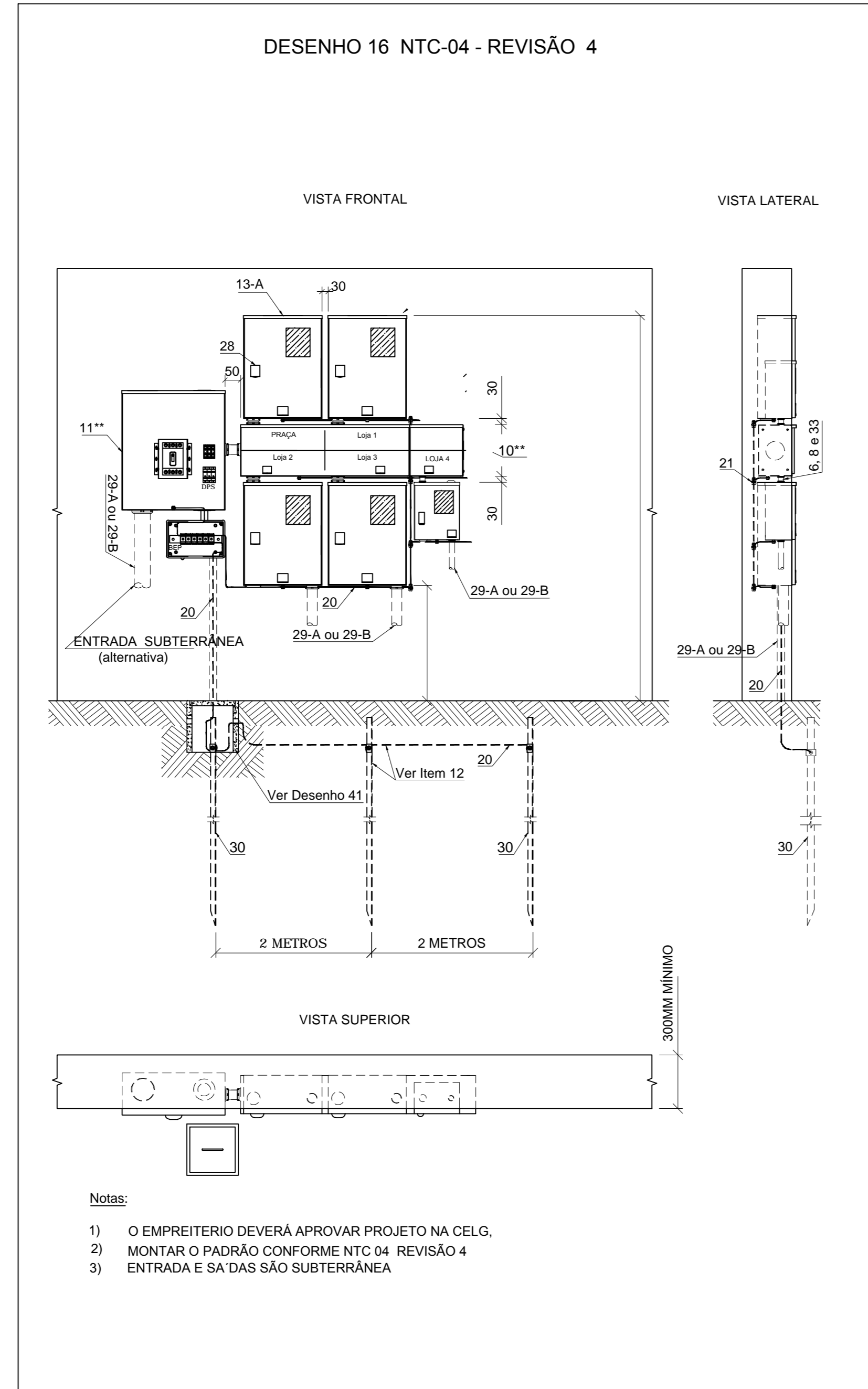
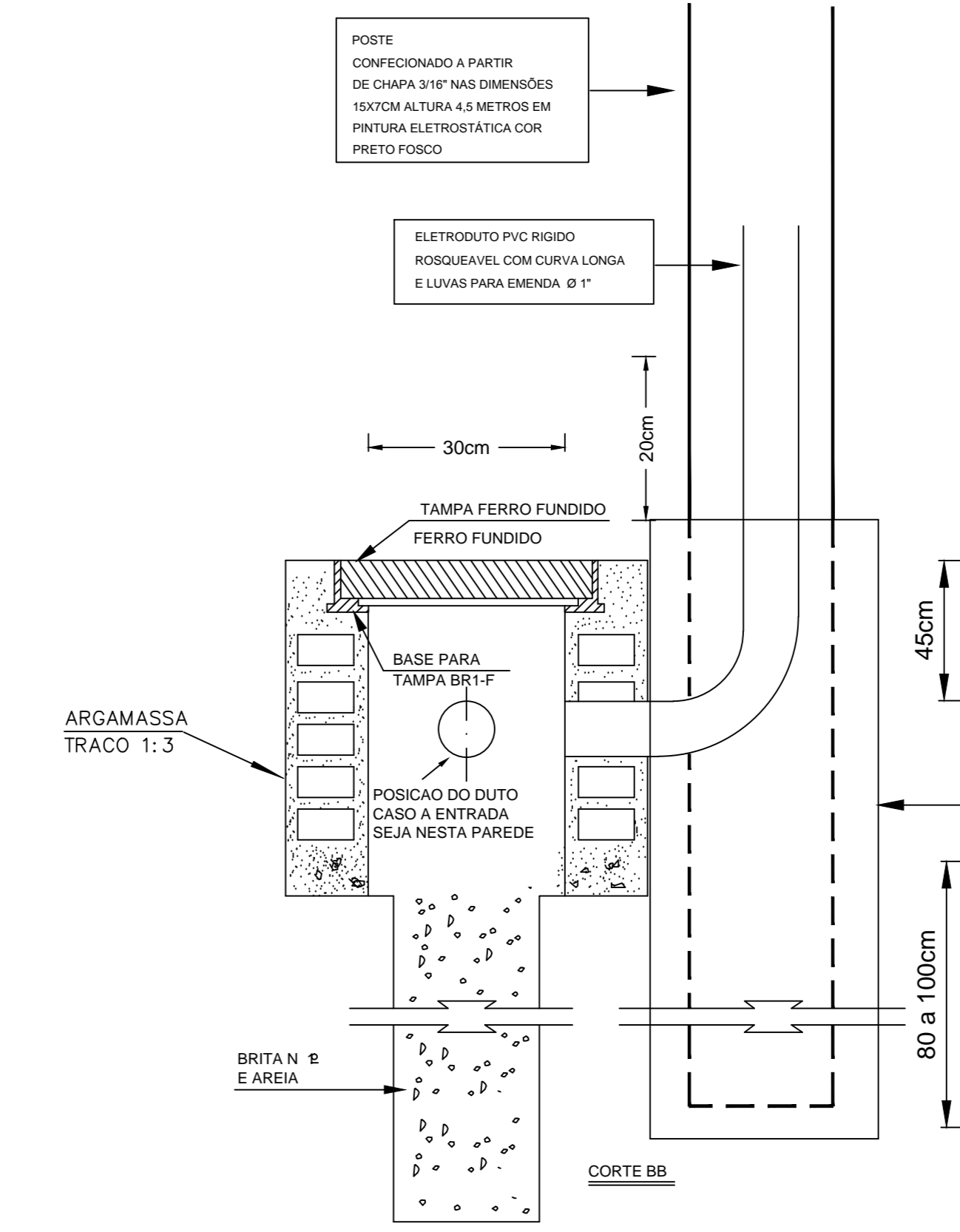
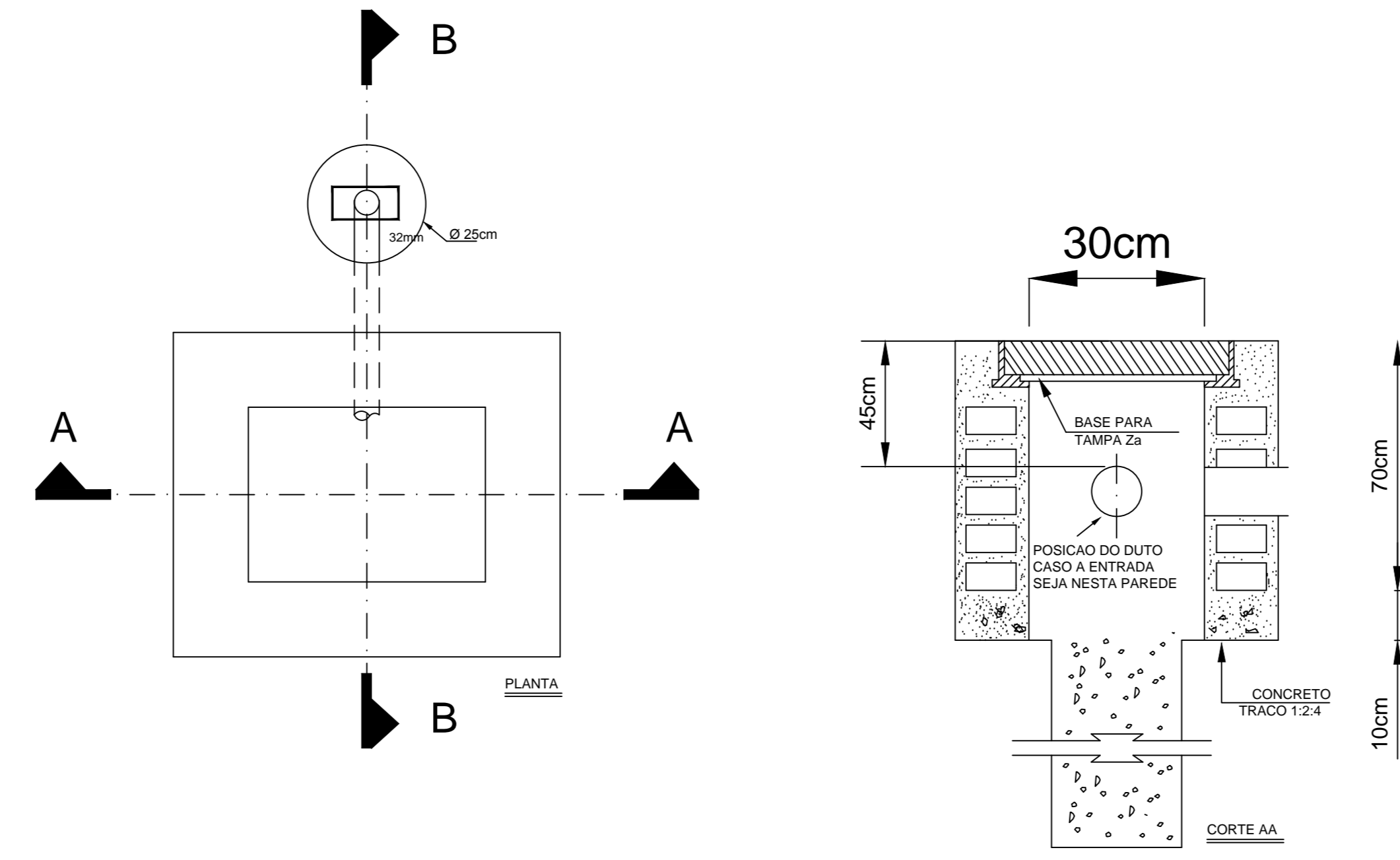
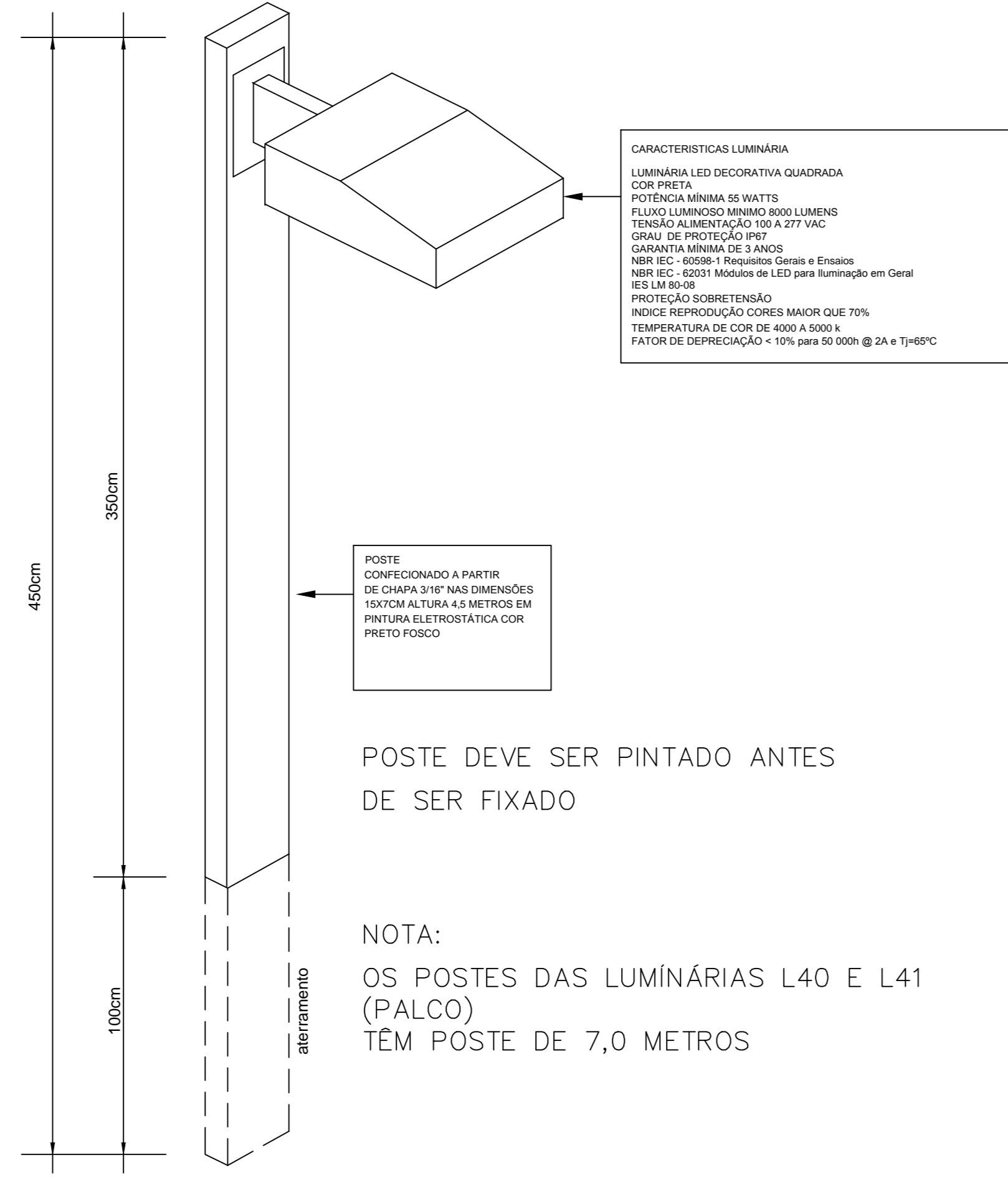


**DETALHE - POSTE BAIXO
ILUMINAÇÃO EXTERNA**



Observações:	Notas:

REV.	ALTERAÇÕES	DATA

BR Serviços Elétricos Ltda.

RUA SIMON BOLIVAR, 58
CENTRO, CORUMBAIBA

PROJETO: **ELETRICO**

CLIENTE: **PREFEITURA MUNICIPAL DE CORUMBAIBA**

ORÇAMENTO: RUA SIMON BOLIVAR, 58
CENTRO, CORUMBAIBA

PROJETISTA: BASSI/LEONEL

VISTO: BASSI/LEONEL

DESENHISTA: BASSI/LEONEL

ESCALA DESENHO: 1/50

DATA: 22/02/2017

FOLHA: 04 / 04

PROPRIETARIO: PREFEITURA MUNICIPAL DE CORUMBAIBA

RESPONSÁVEL TÉCNICO PROJETO: Eng. Srm. MARCIO HENRIQUE BASSI
CREA-MG-45.136/D-134/9971.1541

ARQUIVO: 0334E-001.dwg

PENAS PARA PLOTAGEM		ESCALA DE PLOTAGEM: 20:1									
Nº PENA	1	2	3	4	5	6	7	8	9	OUTRAS	
COR	1	2	3	4	5	6	7	8	9	30	-
ESPESSURA	0,250	0,500	0,200	0,100	0,540	0,200	0,180	0,050	0,350	0,254	