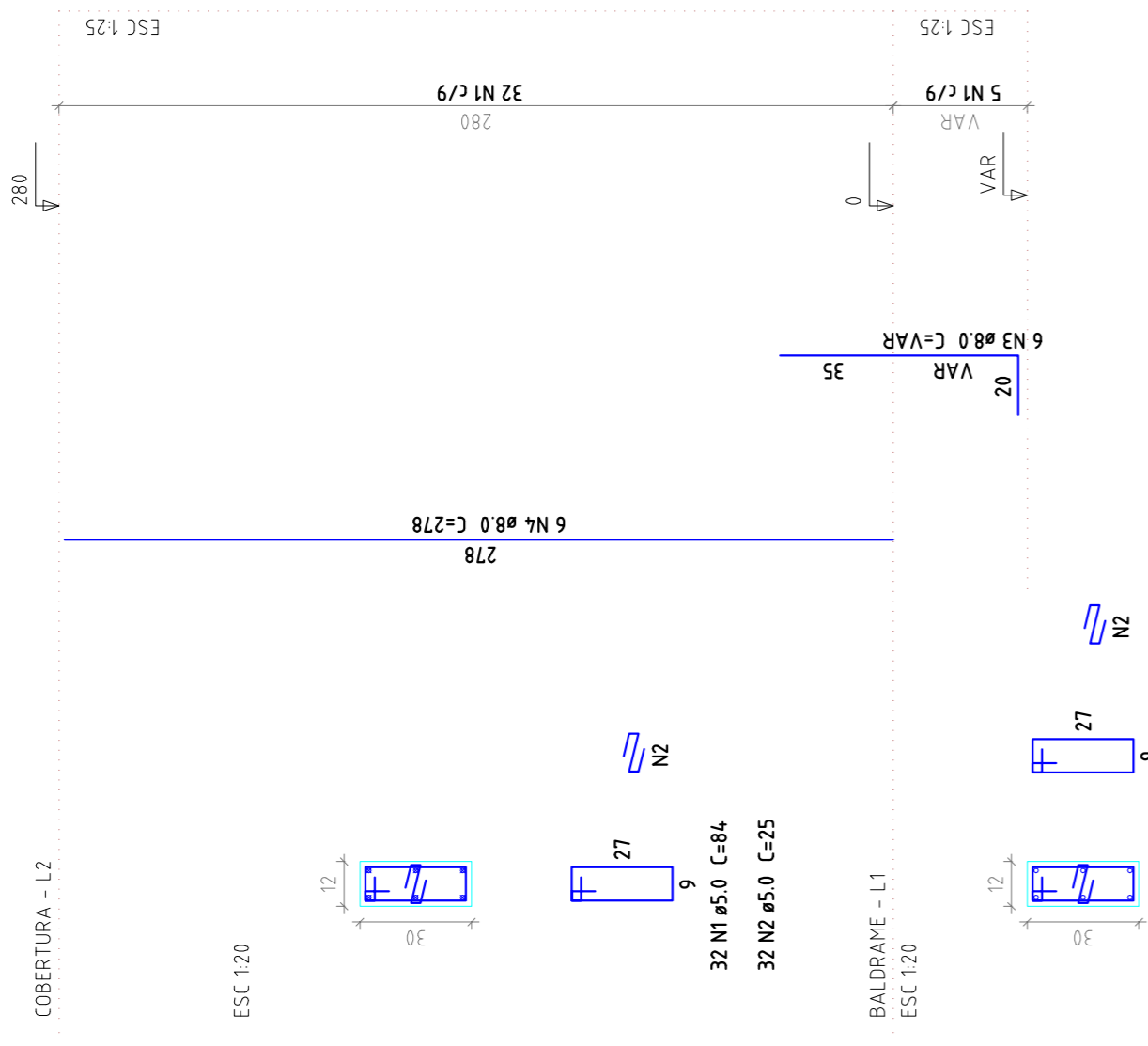
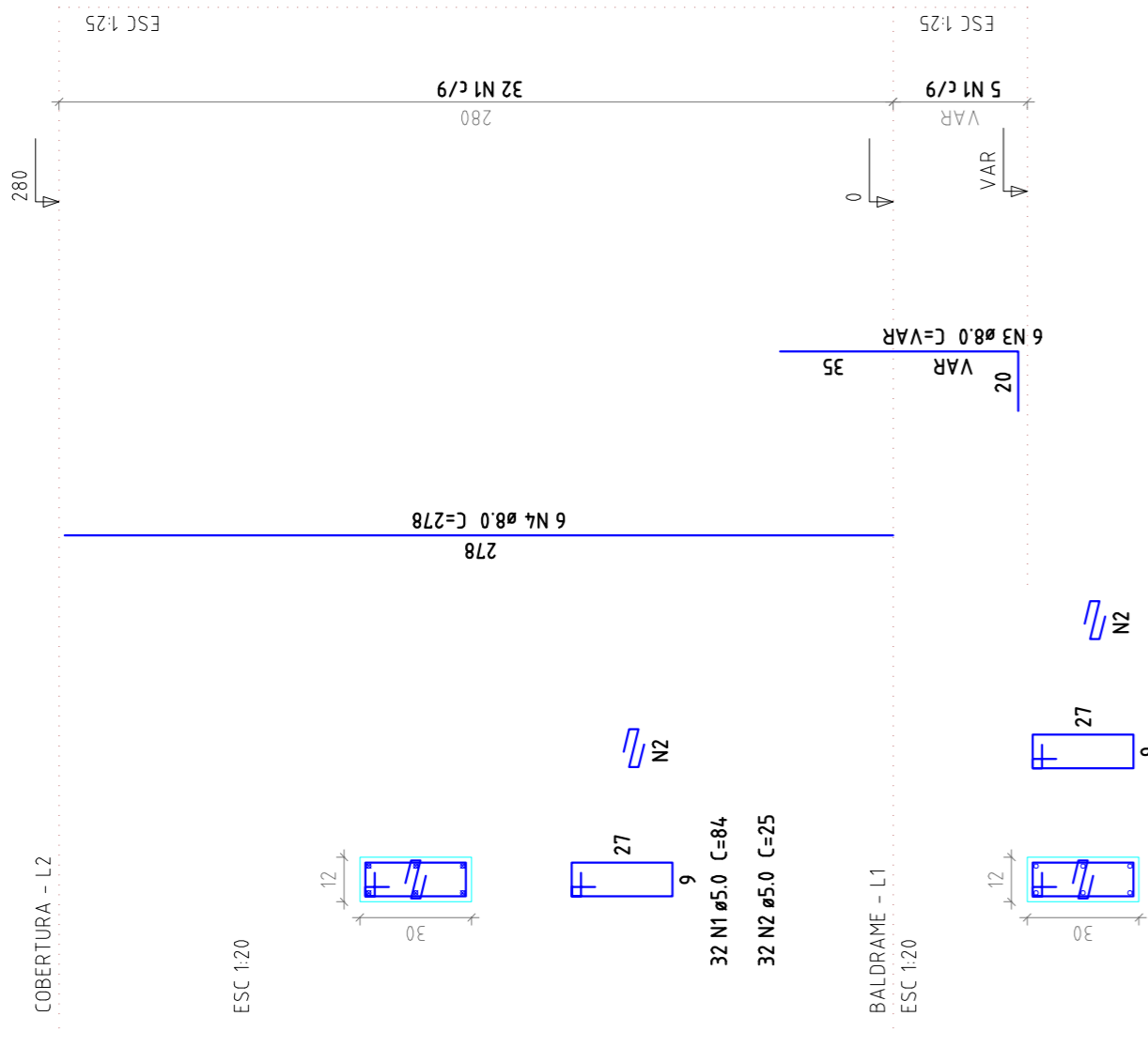


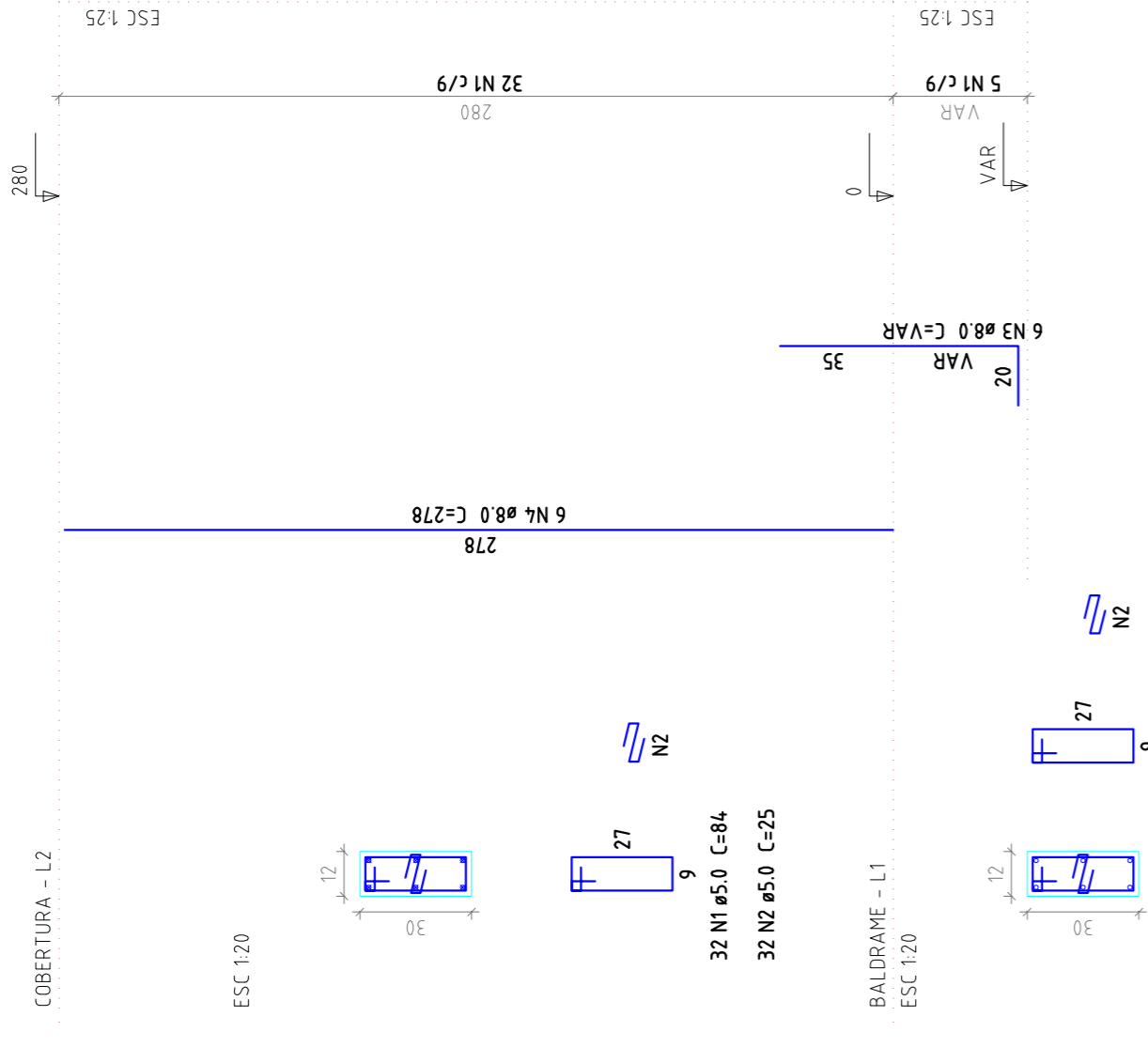
P1



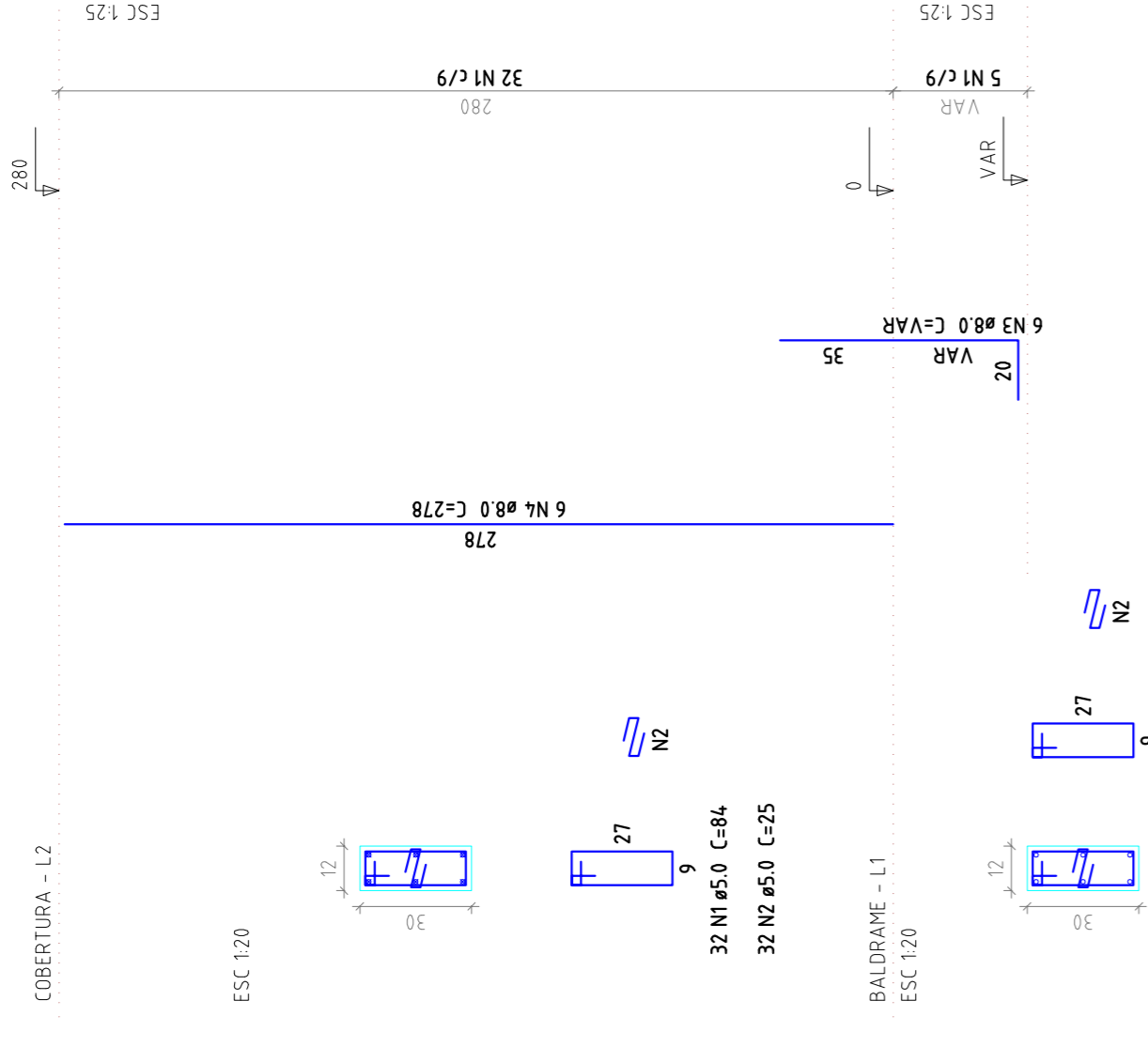
P2



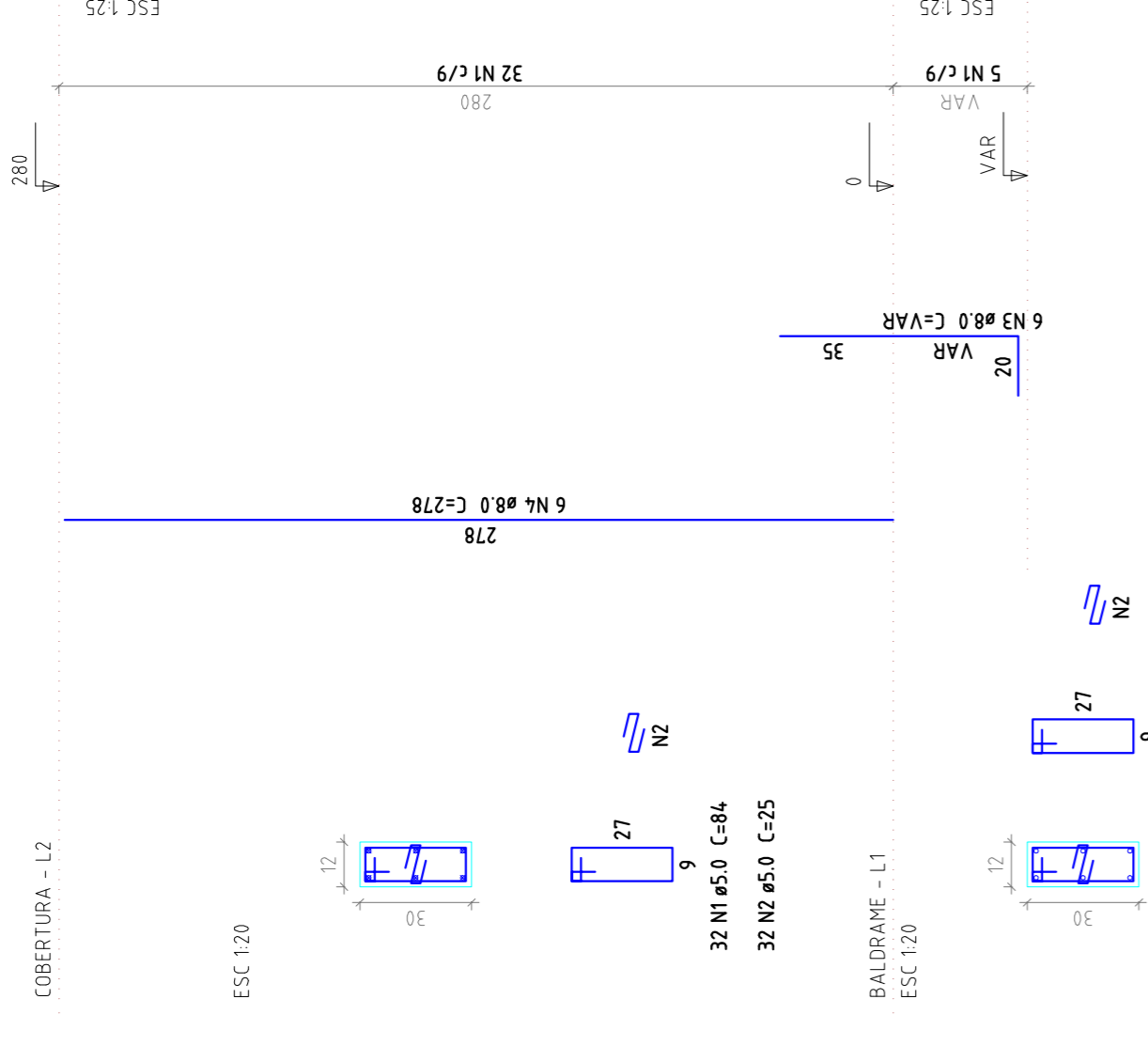
P3



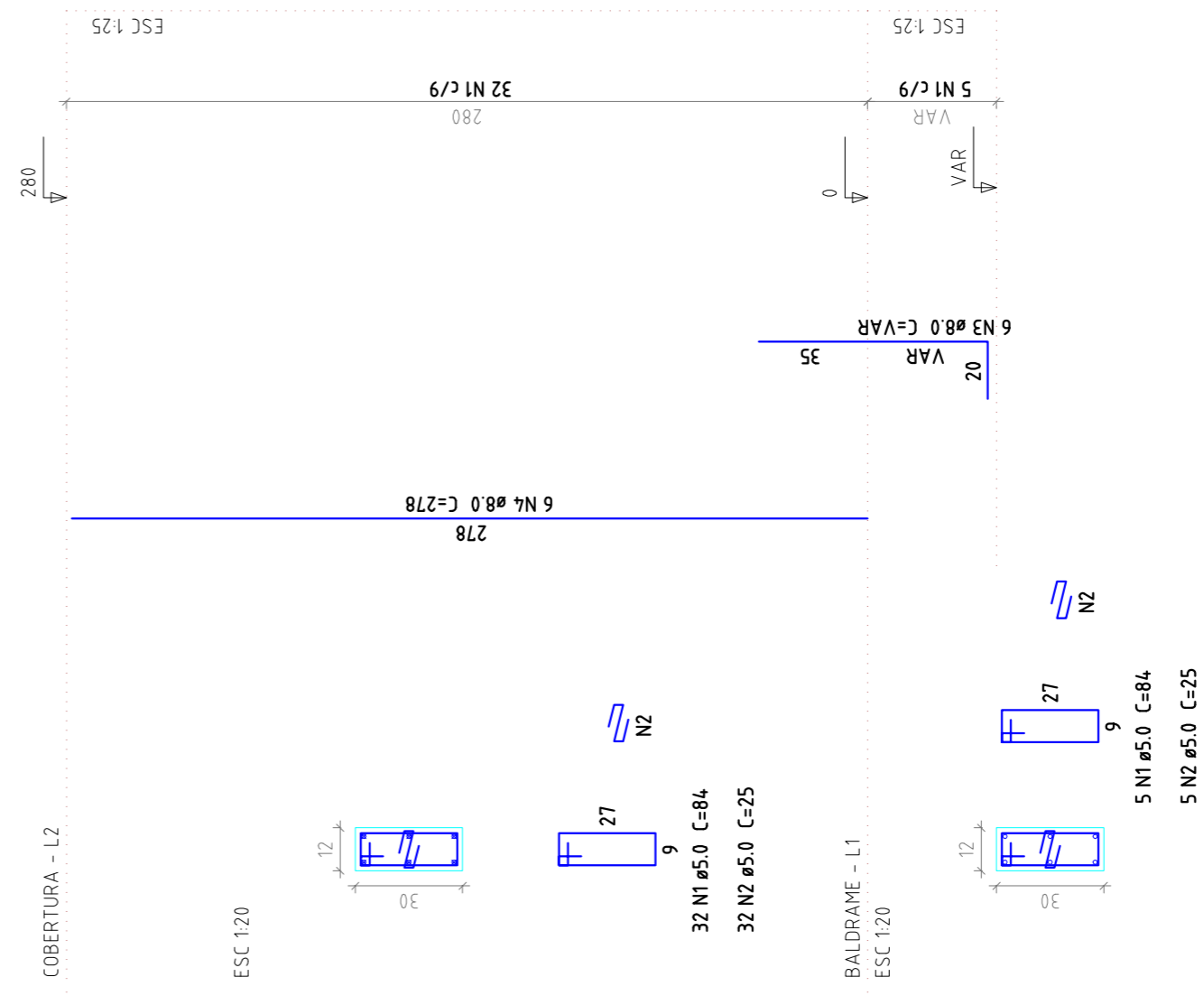
P4



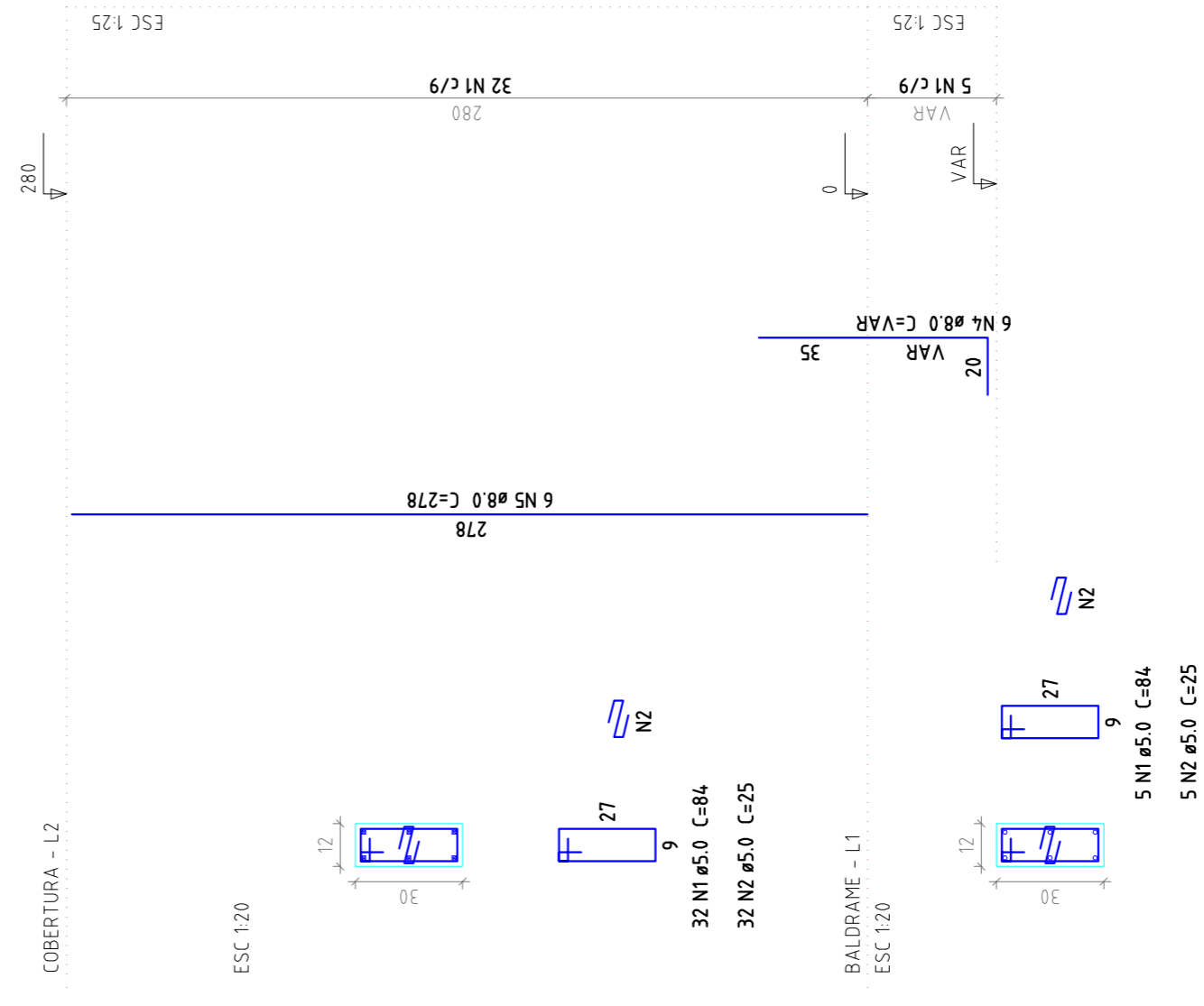
P5



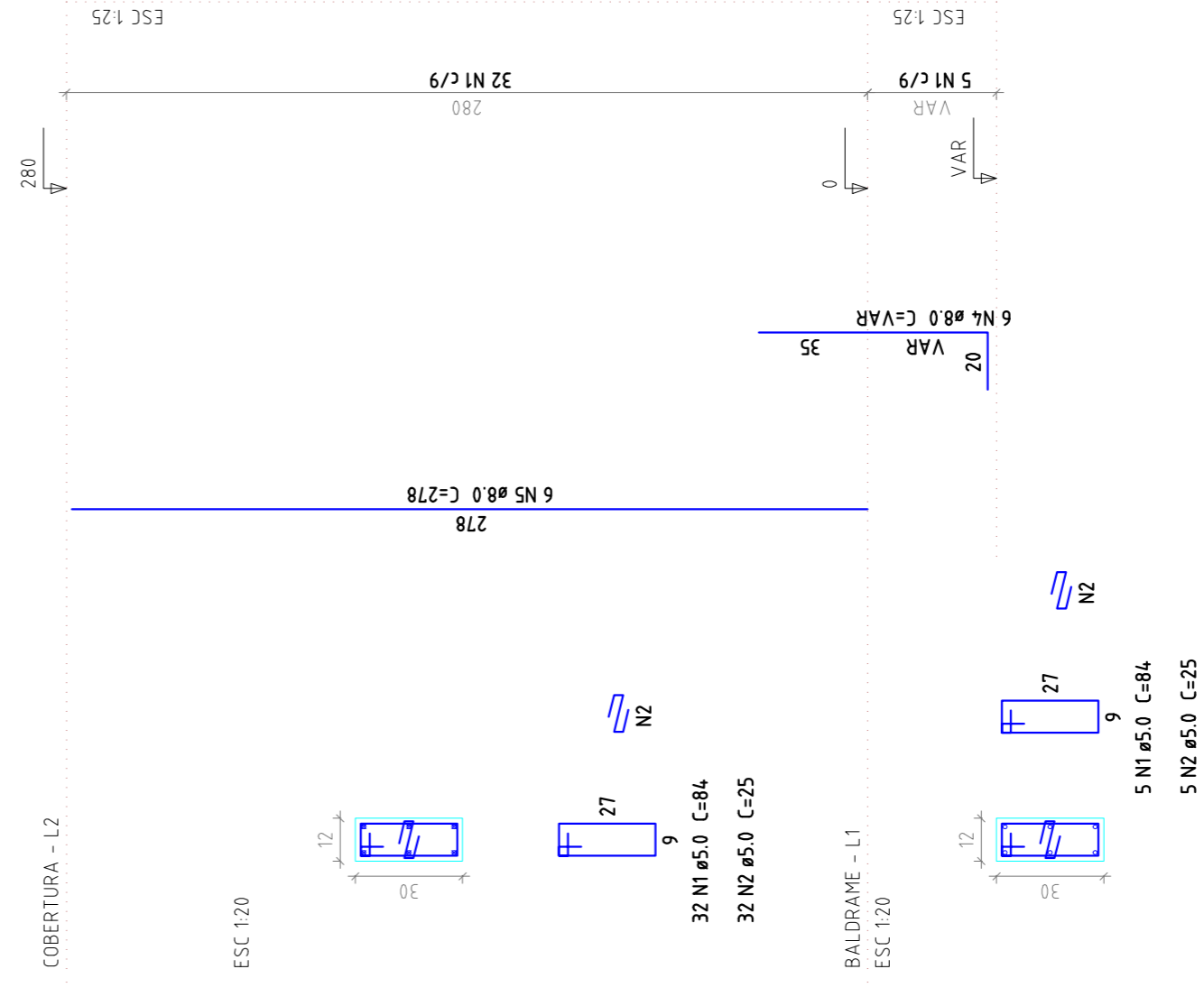
P6



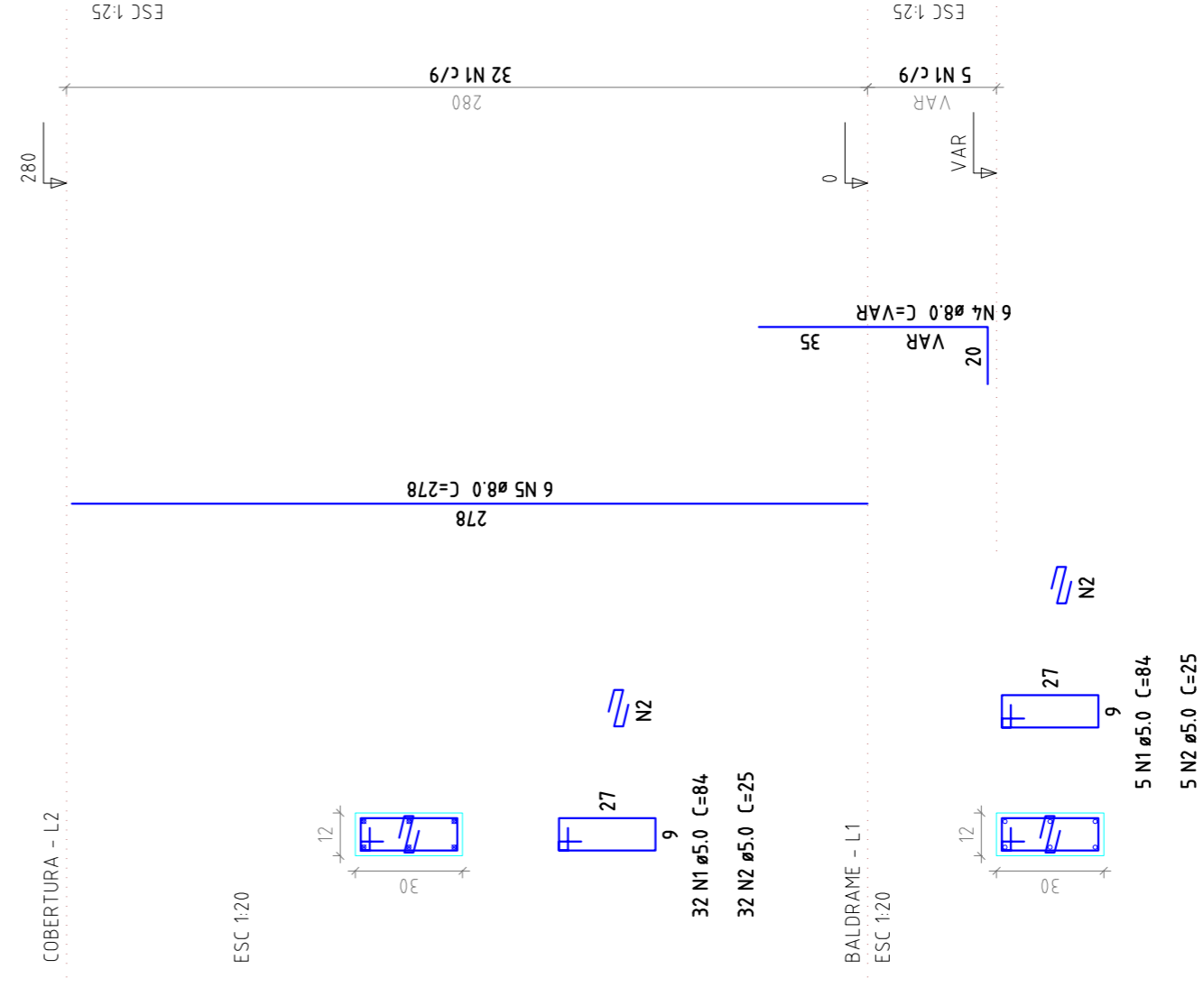
P7



P9



P10



Relação do aço P1 a P6 administração

ACO	N	DIAM	Q	UNIT	C TOTAL
CA60	1	5.0	222	cm <sup>84</sup>	8848
CA50	2	5.0	222	cm <sup>25</sup>	5550
CA60	3	8.0	36	VAR	1008
CA60	4	8.0	36	VAR	1008

ACO	DIAM	C TOTAL	PESO - 10 %
CA50	8.0	135.4	58.8
CA60	5.0	24.2	4.1
PESO TOTAL			62.9
CA50	5.8		
CA60	4.1		

Vol. de concreto total (C-20) = 0,7 m<sup>3</sup>  
 Área de forma total = 16,38 m<sup>2</sup>



PROJETO DE IMPLANTAÇÃO E MODERNIZAÇÃO DE INFRAESTRUTURA PARA ESPORTE, EDUCACIONAL, RECREATIVO E DE LAZER

**ESTRUTURA CONCRETO**

RUA DR. PEDRO LUDOVICO TEIXEIRA COM AV. BRASÍLIA  
 SETOR LAGO BONITO - CORUMBÁ/MS

Proprietário: Prefeitura Municipal de Corumbá/MS

Áreas:  
 Terreno: 108830,45m<sup>2</sup>  
 Total Const.: 3.914,56m<sup>2</sup>

Arquiteto: Viga Ôtão e Pilares Administração

Prancha: 05/07

Revista: 000  
 Data: Fev / 2014  
 Escala: ESTRUCTURA\_PARQUE\_REV00.dwg  
 Arquivo: 27/02/14-Gabriele J. Rome