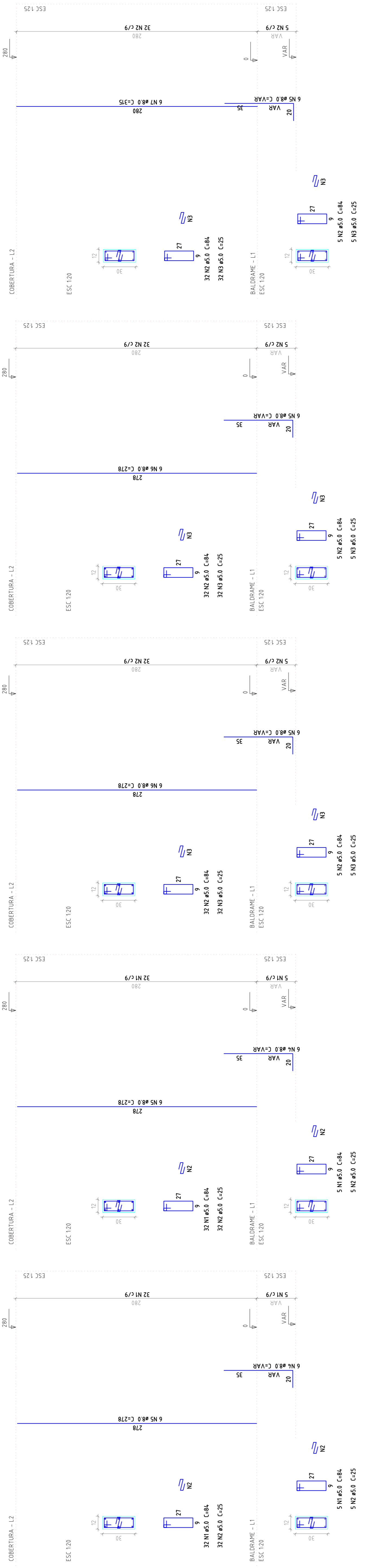
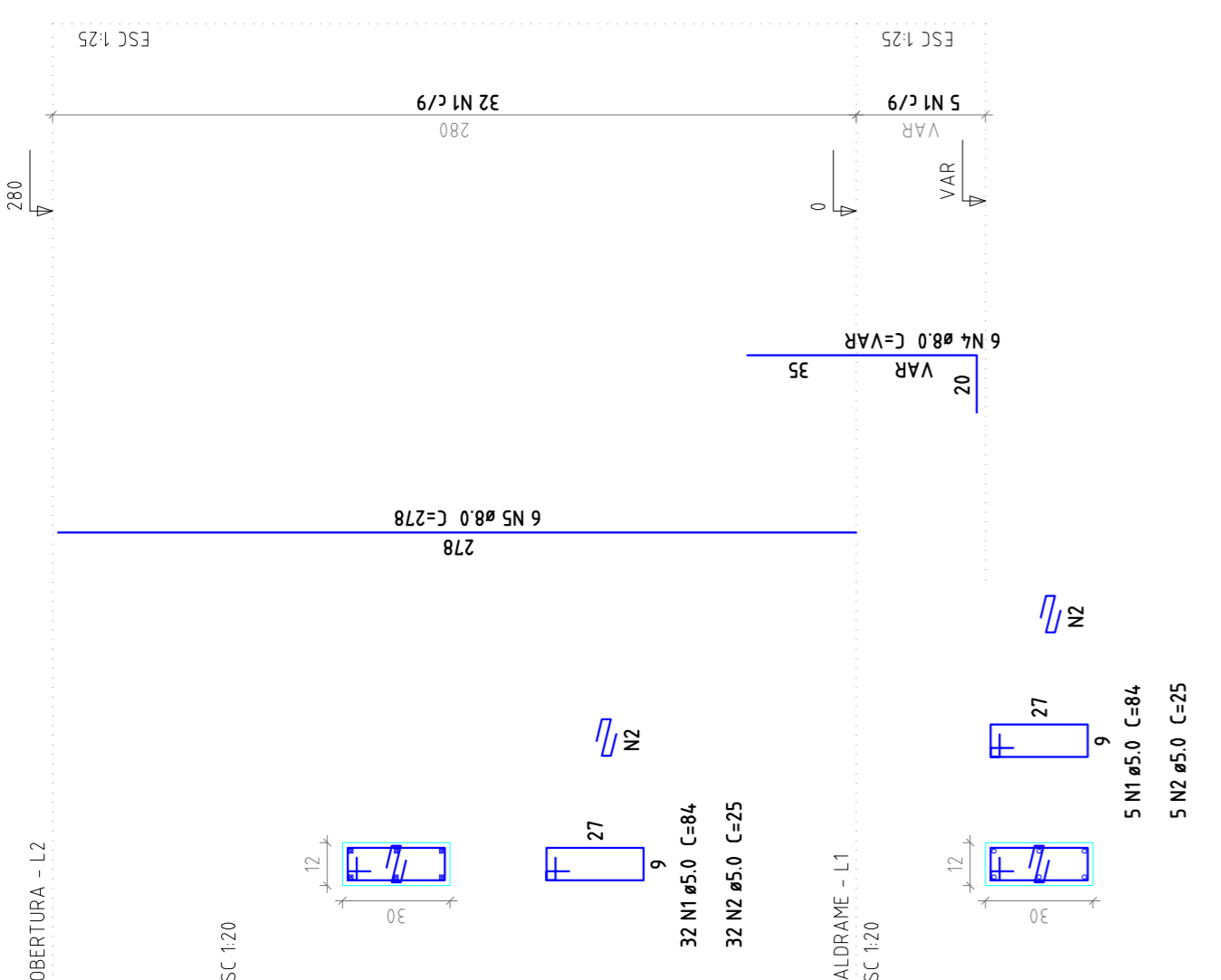


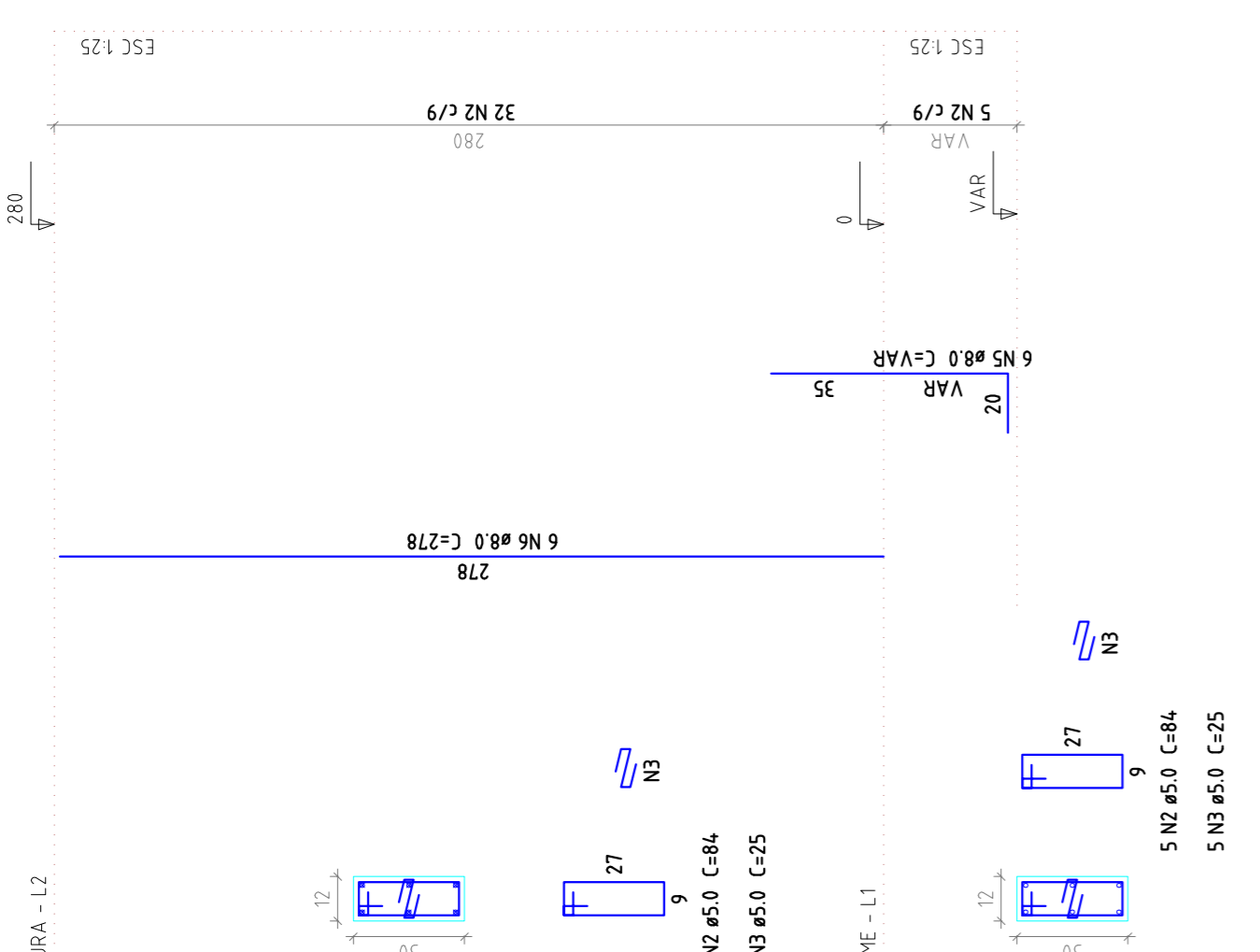
P11



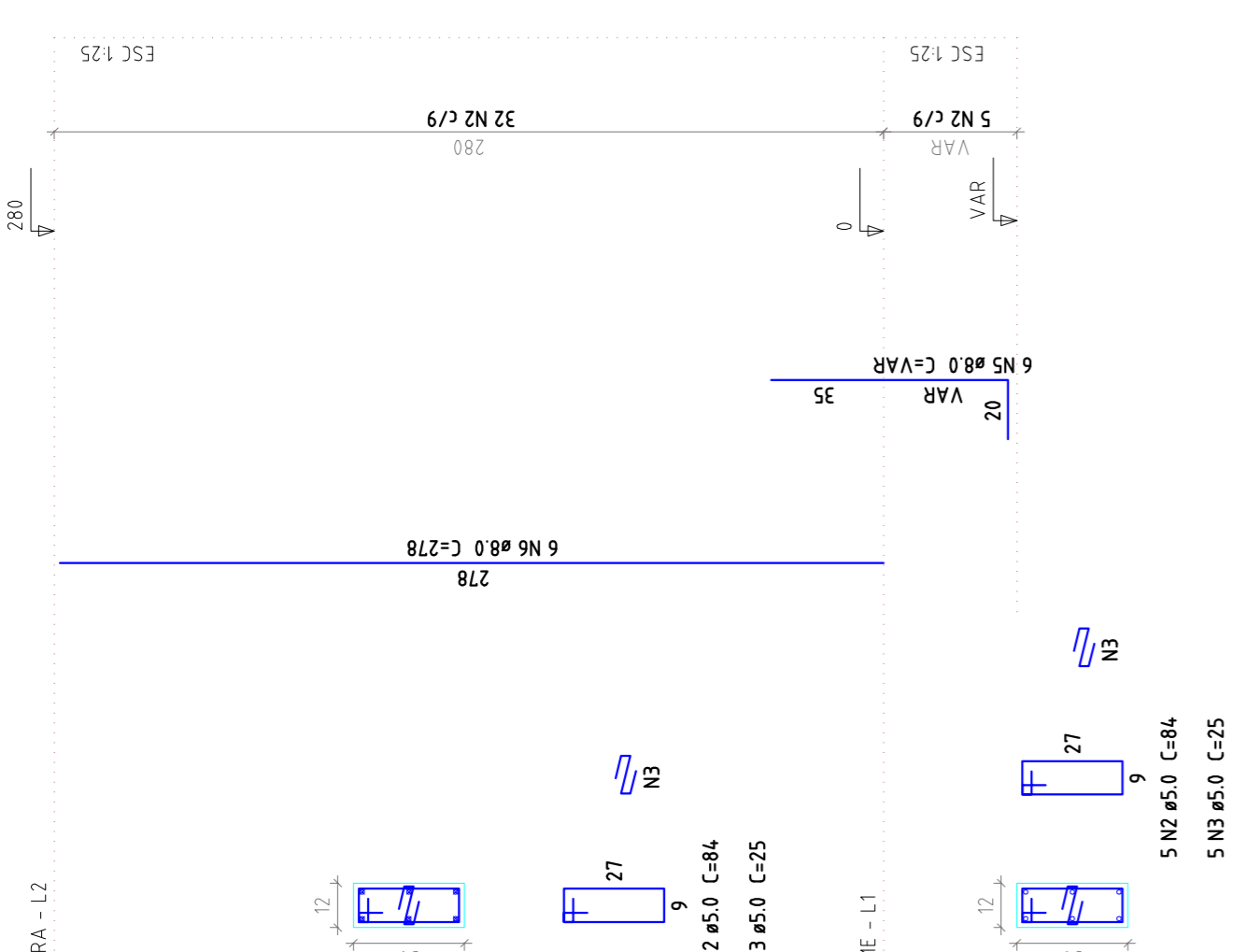
P12



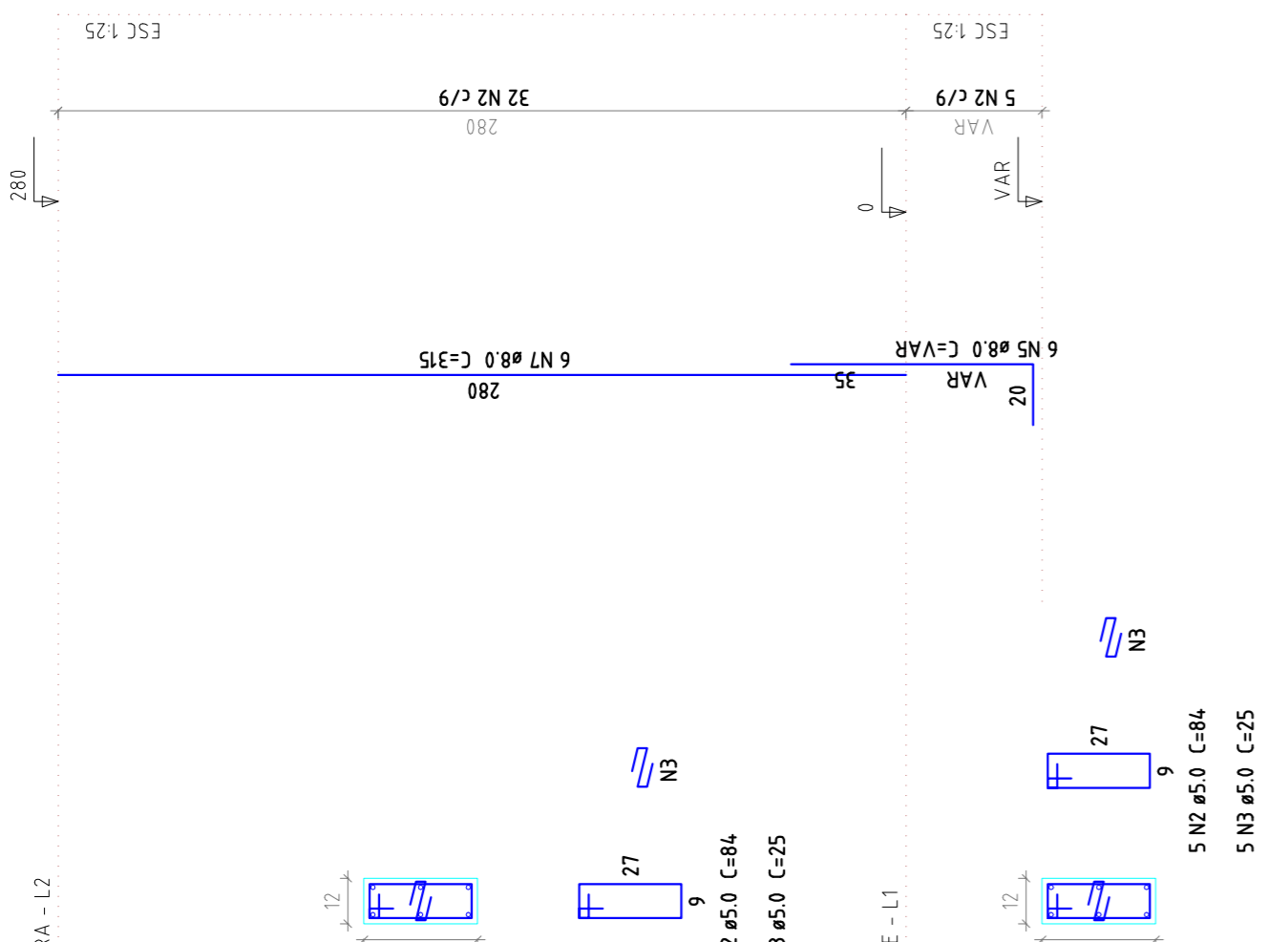
P14



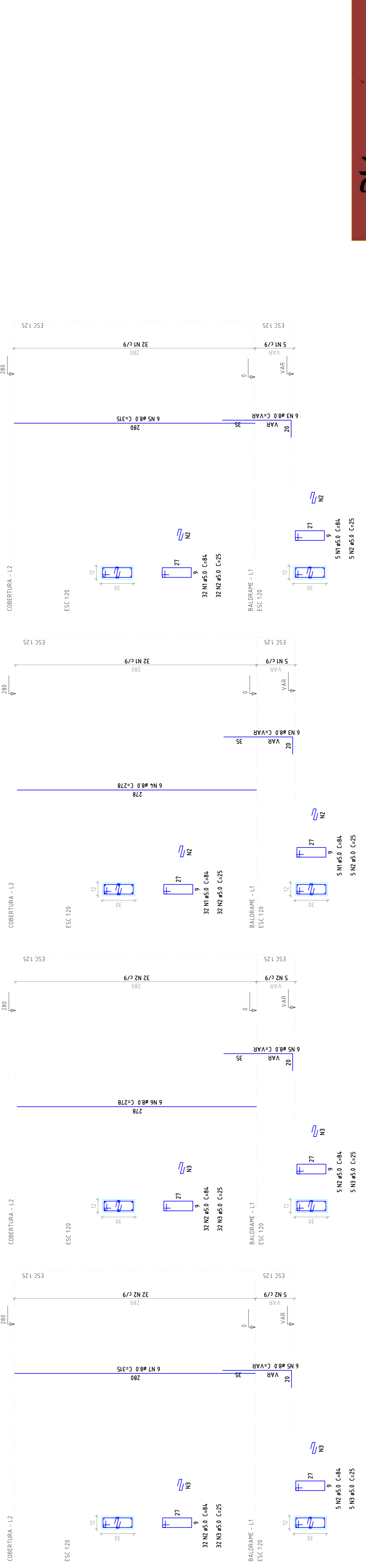
P15



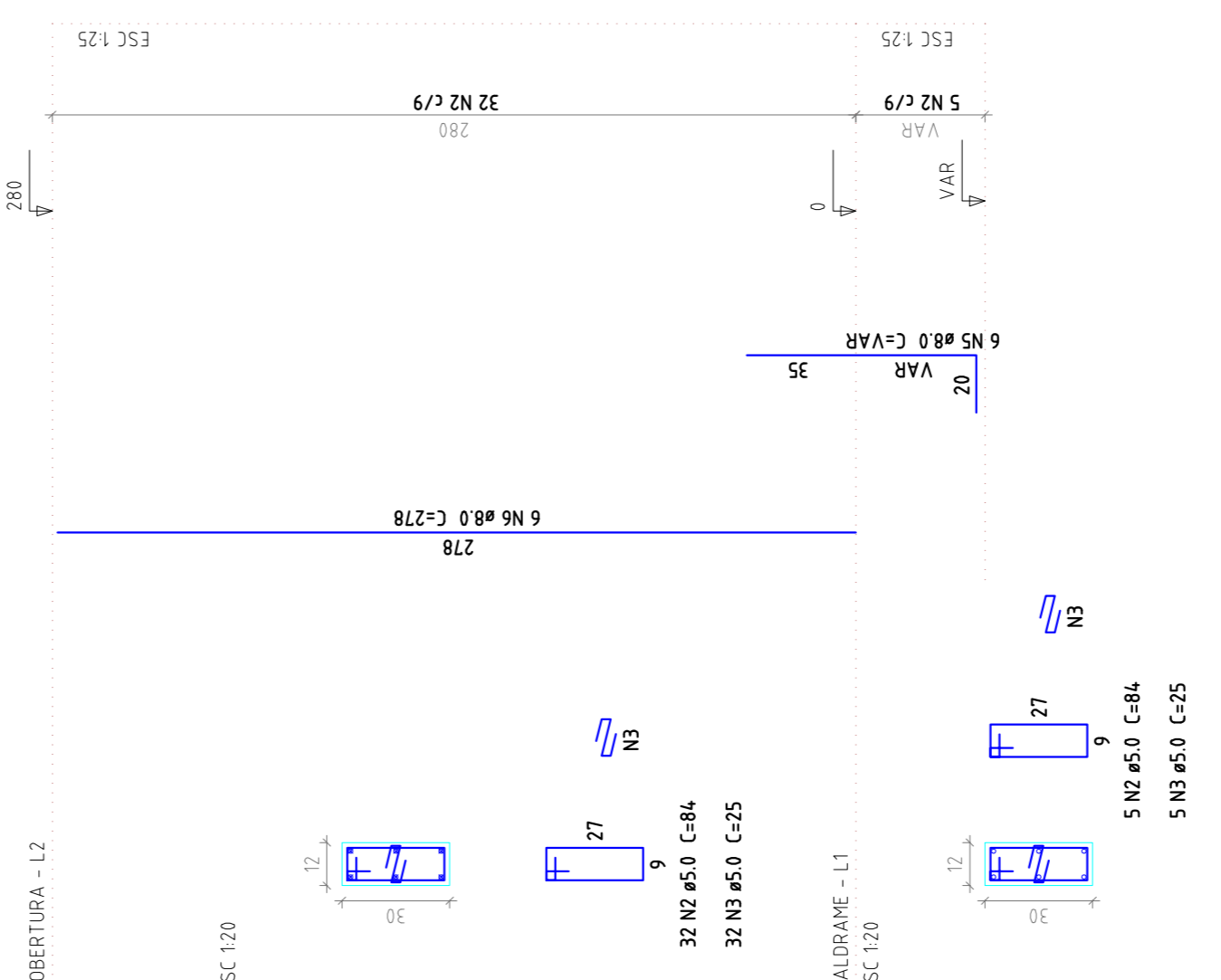
P16



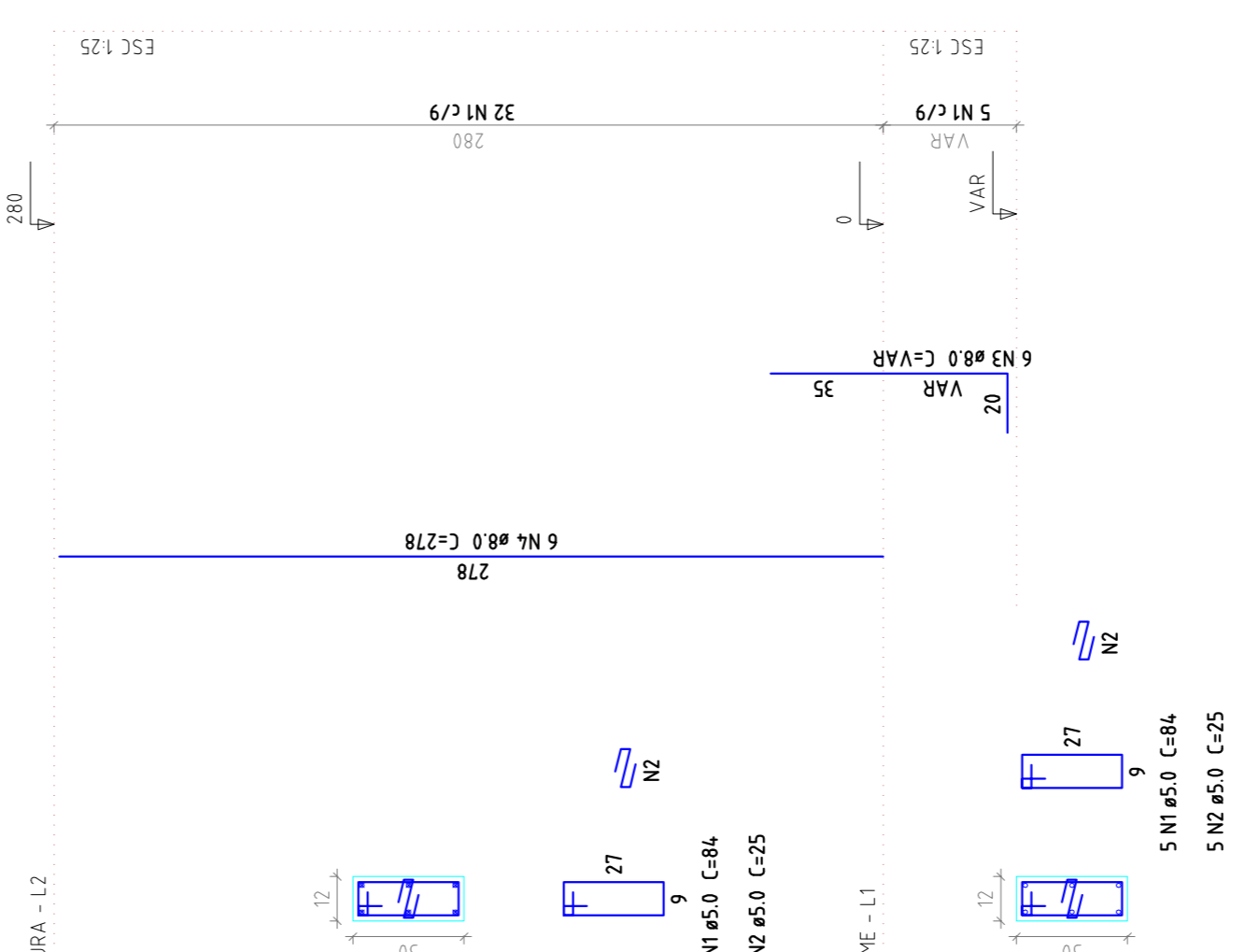
P17



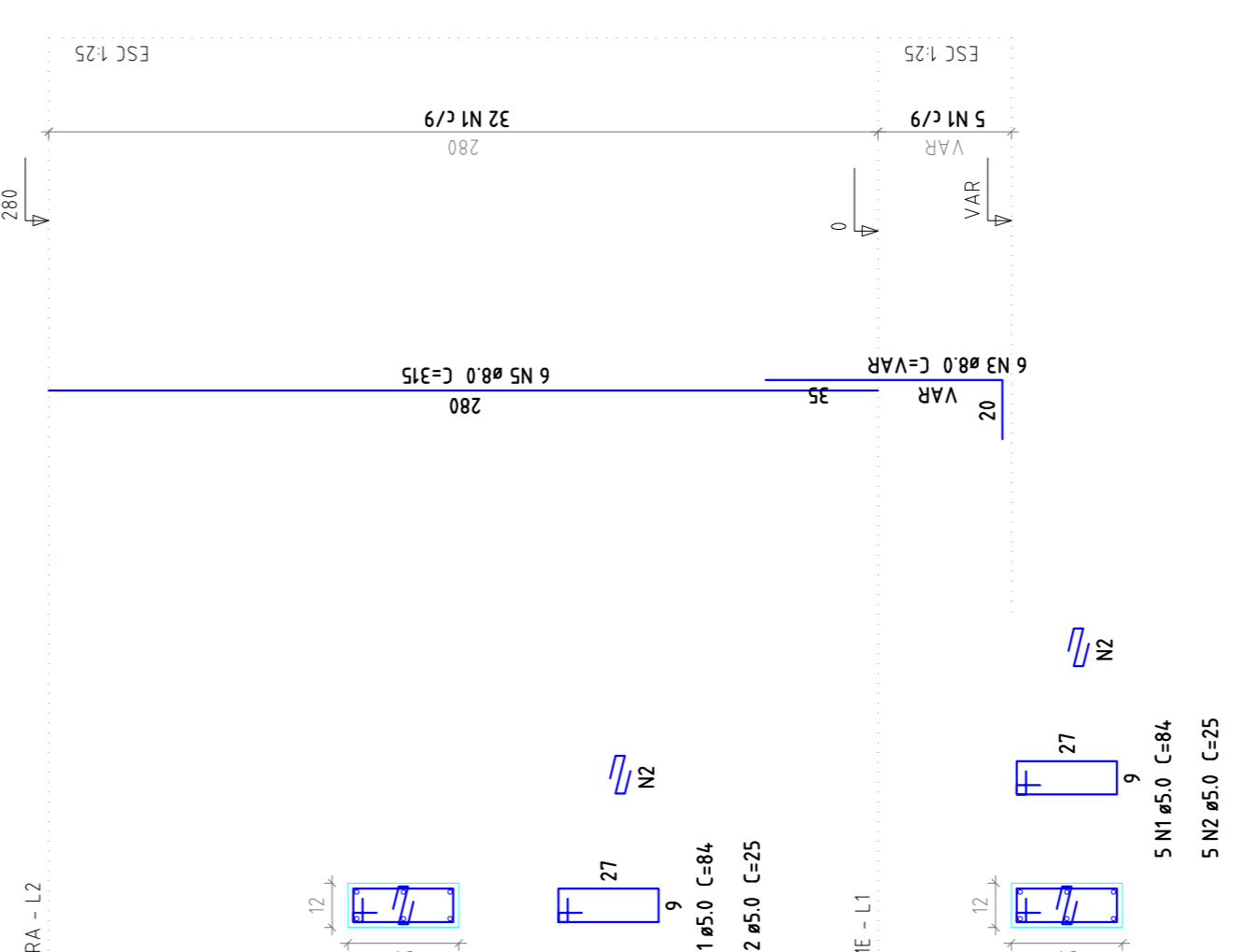
P18



P19



P20



Relação do aço P7 a P12 administração

ACO	N	DIAM	Q	UNIT	C TOTAL	PESO	10 %
				(Kg)	(Kg)	(Kg)	(Kg)
CA60	1	5.0	185	84	1554.0	50.5	35
CA50	2	5.0	185	25	462.5	50.5	50.5
CA50	3	5.0	5	94	4.70	50.5	50.5
CA50	4	8.0	30	VAR	834.0	50.5	50.5
CA50	5	8.0	30	VAR	834.0	50.5	50.5
CA50	6	8.0	6	VAR	102.6	50.5	50.5
CA60	7	8.0	6	VAR	102.6	50.5	50.5
CA60	8	8.0	6	VAR	102.6	50.5	50.5
CA60	9	8.0	6	VAR	102.6	50.5	50.5
CA60	10	8.0	6	VAR	102.6	50.5	50.5
CA60	11	8.0	6	VAR	102.6	50.5	50.5
CA60	12	8.0	6	VAR	102.6	50.5	50.5
CA60	13	8.0	6	VAR	102.6	50.5	50.5
CA60	14	8.0	6	VAR	102.6	50.5	50.5
CA60	15	8.0	6	VAR	102.6	50.5	50.5
CA60	16	8.0	6	VAR	102.6	50.5	50.5
CA60	17	8.0	6	VAR	102.6	50.5	50.5
CA60	18	8.0	6	VAR	102.6	50.5	50.5
CA60	19	8.0	6	VAR	102.6	50.5	50.5
CA60	20	8.0	6	VAR	102.6	50.5	50.5
CA60	21	8.0	6	VAR	102.6	50.5	50.5
CA60	22	8.0	6	VAR	102.6	50.5	50.5
CA60	23	8.0	6	VAR	102.6	50.5	50.5
CA60	24	8.0	6	VAR	102.6	50.5	50.5
CA60	25	8.0	6	VAR	102.6	50.5	50.5
CA60	26	8.0	6	VAR	102.6	50.5	50.5
CA60	27	8.0	6	VAR	102.6	50.5	50.5
CA60	28	8.0	6	VAR	102.6	50.5	50.5
CA60	29	8.0	6	VAR	102.6	50.5	50.5
CA60	30	8.0	6	VAR	102.6	50.5	50.5
CA60	31	8.0	6	VAR	102.6	50.5	50.5
CA60	32	8.0	6	VAR	102.6	50.5	50.5
CA60	33	8.0	6	VAR	102.6	50.5	50.5
CA60	34	8.0	6	VAR	102.6	50.5	50.5
CA60	35	8.0	6	VAR	102.6	50.5	50.5
CA60	36	8.0	6	VAR	102.6	50.5	50.5
CA60	37	8.0	6	VAR	102.6	50.5	50.5
CA60	38	8.0	6	VAR	102.6	50.5	50.5
CA60	39	8.0	6	VAR	102.6	50.5	50.5
CA60	40	8.0	6	VAR	102.6	50.5	50.5
CA60	41	8.0	6	VAR	102.6	50.5	50.5
CA60	42	8.0	6	VAR	102.6	50.5	50.5
CA60	43	8.0	6	VAR	102.6	50.5	50.5
CA60	44	8.0	6	VAR	102.6	50.5	50.5
CA60	45	8.0	6	VAR	102.6	50.5	50.5
CA60	46	8.0	6	VAR	102.6	50.5	50.5
CA60	47	8.0	6	VAR	102.6	50.5	50.5
CA60	48	8.0	6	VAR	102.6	50.5	50.5
CA60	49	8.0	6	VAR	102.6	50.5	50.5
CA60	50	8.0	6	VAR	102.6	50.5	50.5
CA60	51	8.0	6	VAR	102.6	50.5	50.5
CA60	52	8.0	6	VAR	102.6	50.5	50.5
CA60	53	8.0	6	VAR	102.6	50.5	50.5
CA60	54	8.0	6	VAR	102.6	50.5	50.5
CA60	55	8.0	6	VAR	102.6	50.5	50.5
CA60	56	8.0	6	VAR	102.6	50.5	50.5
CA60	57	8.0	6	VAR	102.6	50.5	50.5
CA60	58	8.0	6	VAR	102.6	50.5	50.5
CA60	59	8.0	6	VAR	102.6	50.5	50.5
CA60	60	8.0	6	VAR	102.6	50.5	50.5
CA60	61	8.0	6	VAR	102.6	50.5	50.5
CA60	62	8.0	6	VAR	102.6	50.5	50.5
CA60	63	8.0	6	VAR	102.6	50.5	50.5
CA60	64	8.0	6	VAR	102.6	50.5	50.5
CA60	65	8.0	6	VAR	102.6	50.5	50.5
CA60	66	8.0	6	VAR	102.6	50.5	50.5
CA60	67	8.0	6	VAR	102.6	50.5	50.5
CA60	68	8.0	6	VAR	102.6	50.5	50.5
CA60	69	8.0	6	VAR	102.6	50.5	50.5
CA60	70	8.0	6	VAR	102.6	50.5	50.5
CA60	71	8.0	6	VAR	102.6	50.5	50.5
CA60	72	8.0	6	VAR	102.6	50.5	50.5
CA60	73	8.0	6	VAR	102.6	50.5	50.5
CA60	74	8.0	6	VAR	102.6	50.5	50.5
CA60	75	8.0	6	VAR	102.6	50.5	50.5
CA60	76	8.0	6	VAR	102.6	50.5	50.5
CA60	77	8.0	6	VAR	102.6	50.5	50.5
CA60	78	8.0	6	VAR	102.6	50.5	50.5
CA60	79	8.0	6	VAR	102.6	50.5	50.5
CA60	80	8.0	6	VAR	102.6	50.5	50.5
CA60	81	8.0	6	VAR	102.6	50.5	50.5
CA60	82	8.0	6	VAR	102.6	50.5	50.5
CA60	83	8.0	6	VAR	102.6	50.5	50.5
CA60	84	8.0	6	VAR	102.6	50.5	50.5
CA60	85	8.0	6	VAR	102.6	50.5	50.5
CA60	86	8.0	6	VAR	102.6	50.5	50.5
CA60	87	8.0	6	VAR	102.6	50.5	50.5
CA60	88	8.0	6	VAR	102.6	50.5	50.5
CA60	89	8.0	6	VAR	102.6	50.5	50.5
CA60	90	8.0	6	VAR	102.6	50.5	50.5
CA60	91	8.0	6	VAR	102.6	50.5	50.5
CA60	92	8.0	6	VAR	102.6	50.5	50.5
CA60	93	8.0	6	VAR	102.6	50.5	50.5
CA60	94	8.0	6	VAR	102.6	50.5	50.5
CA60	95	8.0	6	VAR	102.6	50.5	50.5
CA60	96	8.0	6	VAR	102.6	50.5	50.5
CA60	97	8.0	6	VAR	102.6	50.5	50.5
CA60	98	8.0	6	VAR	102.6	50.5	50.5
CA60	99	8.0	6	VAR	102.6	50.5	50.5
CA60	100	8.0	6	VAR	102.6	50.5	50.5

Resumo do aço

ACO	DIAM	C TOTAL	PESO	10 %
	(mm)	(m)	(Kg)	(Kg)
CA50	8.0	116.5	50.5	50.5
CA60	5.0	206.4	35	35
PESO TOTAL			85.5	85.5
CA50	50.5			
CA60	35			

Vol. de concreto total (C=20) = 0.62 m³
Área de forma total = 14.07 m²

Relação do aço P13 a P18 administração

ACO	N	DIAM	Q	UNIT	C TOTAL	PESO	10 %
				(Kg)	(Kg)	(Kg)	(Kg)
CA60	1	5.0	5	84	1780.8	58.5	40
CA50	2	5.0	212	25	5300	58.5	58.5
CA50	3	5.0	212	25	5300	58.5	58.5
CA50	4	8.0	6	VAR	5004	58.5	58.5
CA50	5	8.0	30	VAR	5004	58.5	58.5
CA50	6	8.0	18	VAR	3000	58.5	58.5
CA50	7	8.0	12	VAR	3000	58.5	58.5
CA50	8	8.0	12	VAR	3000	58.5	58.5
CA50	9	8.0	6	VAR	1026	58.5	58.5
CA50	10	8.0	6	VAR	1026	58.5	58.5
CA50	11	8.0	6	VAR	1026	58.5	58.5
CA50	12	8.0	6	VAR	1026	58.5	58.5
CA50	13	8.0	6	VAR	1026	58.5	58.5
CA50	14	8.0	6	VAR	1026	58.5	58.5
CA50	15	8.0	6	VAR	1026	58.5	58.5
CA50	16	8.0	6	VAR	1026	58.5	58.5
CA50	17	8.0	6	VAR	1026	58.5	58.5
CA50	18	8.0	6	VAR	1026	58.5	58.5
CA50	19	8.0	6	VAR	1026	58.5	58.5
CA50	20	8.0	6	VAR	1026	58.5	58.5
CA50	21	8.0	6	VAR	1026	58.5	58.5
CA50	22	8.0	6	VAR	1026	58.5	58.5
CA50	23	8.0	6	VAR	1026	58.5	58.5
CA50	24	8.0	6	VAR	1026	58.5	58.5
CA50	25	8.0	6	VAR	1026	58.5	58.5
CA50	26	8.0	6	VAR	1026	58.5	58.5
CA50	27	8.0	6	VAR	1026	58.5	58.5
CA50	28	8.0	6	VAR	1026		