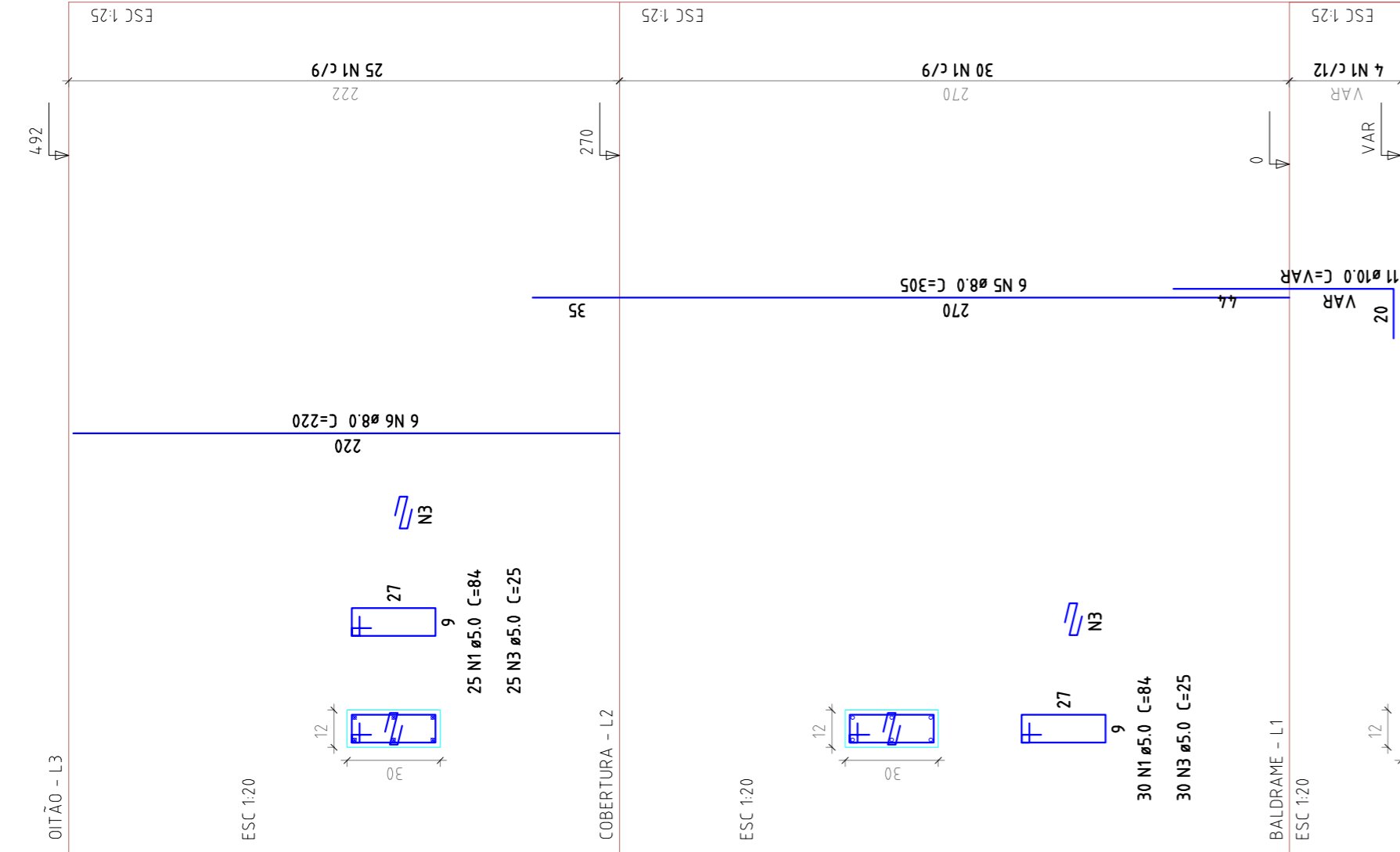
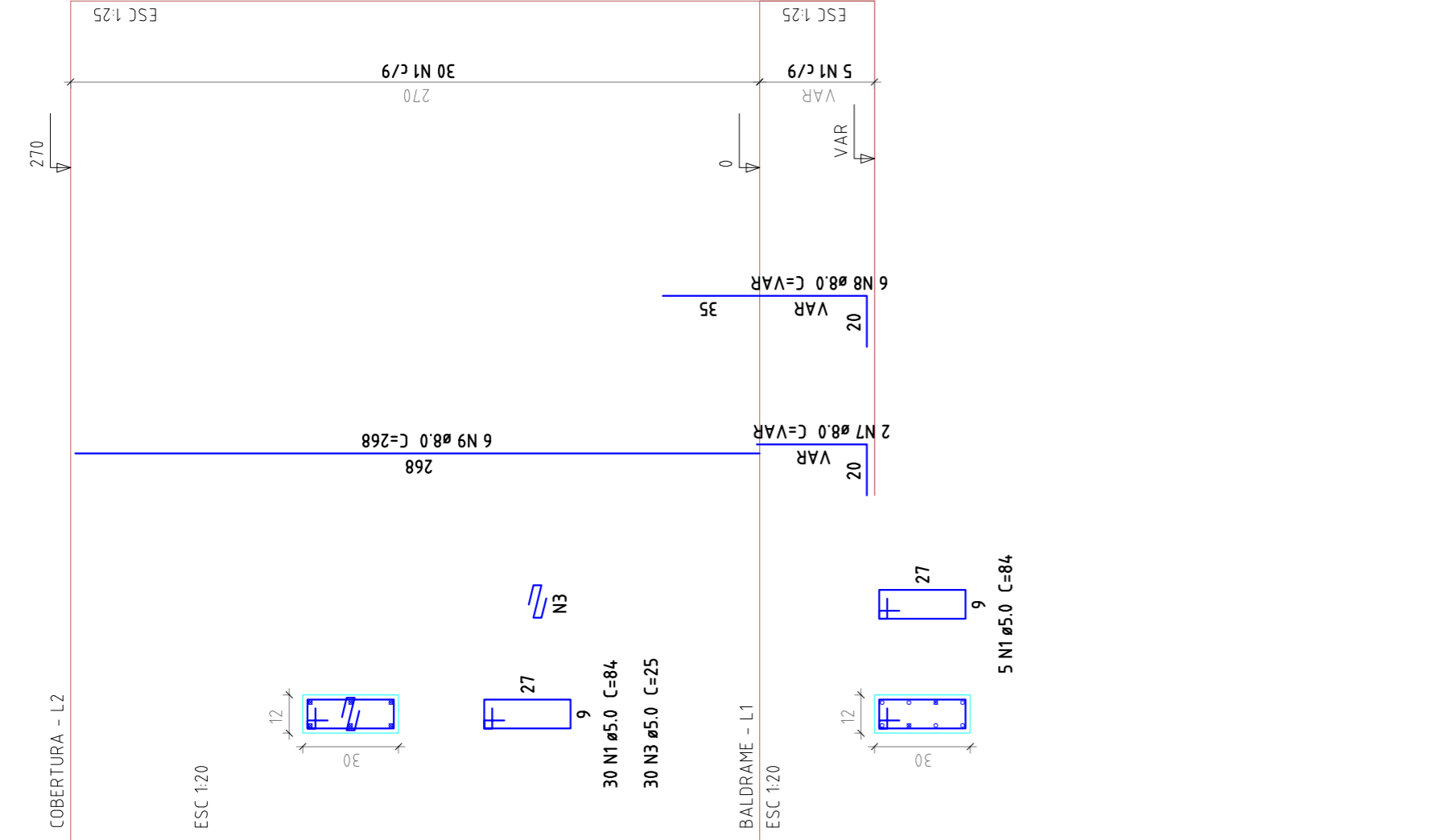


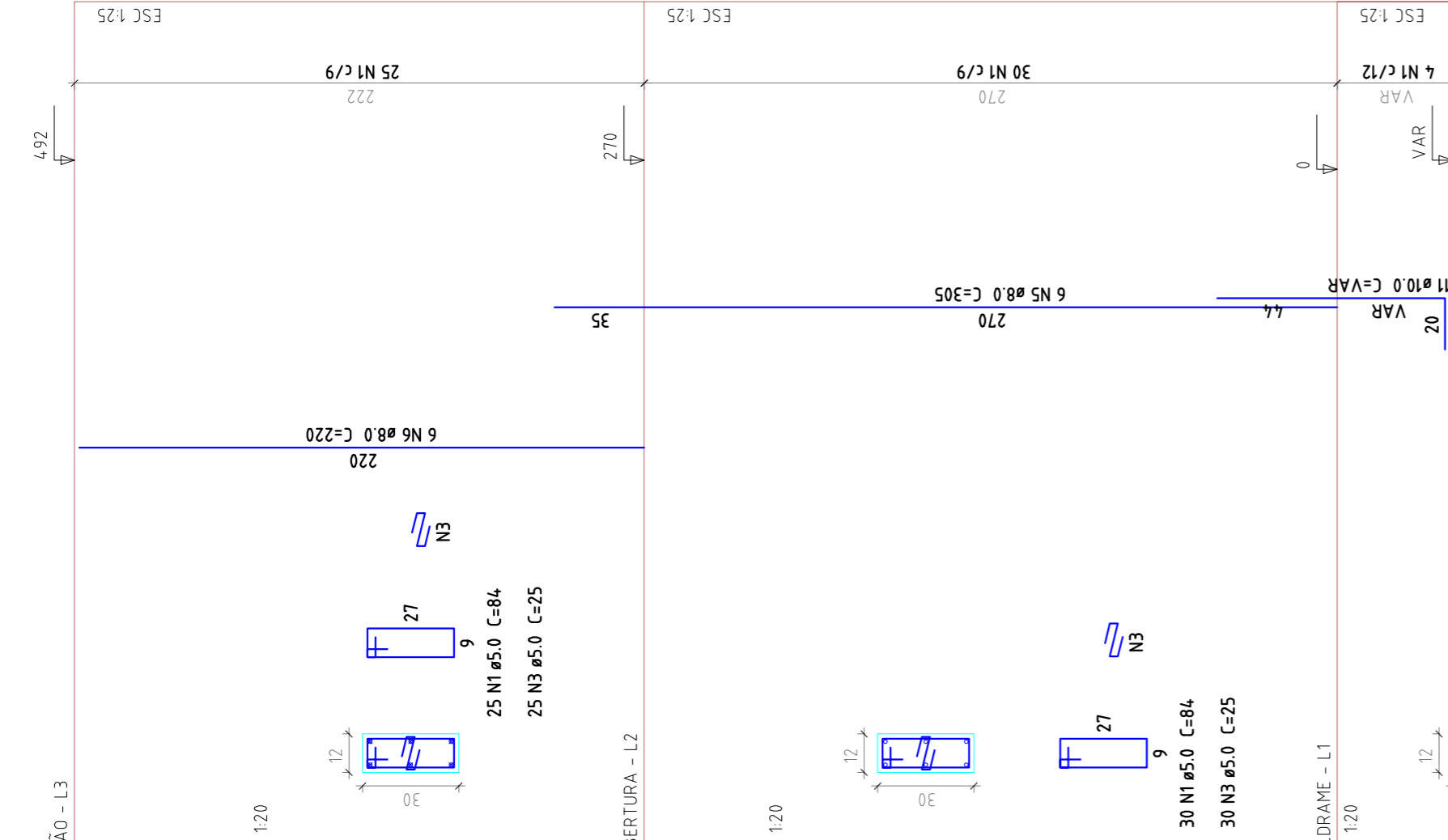
P1



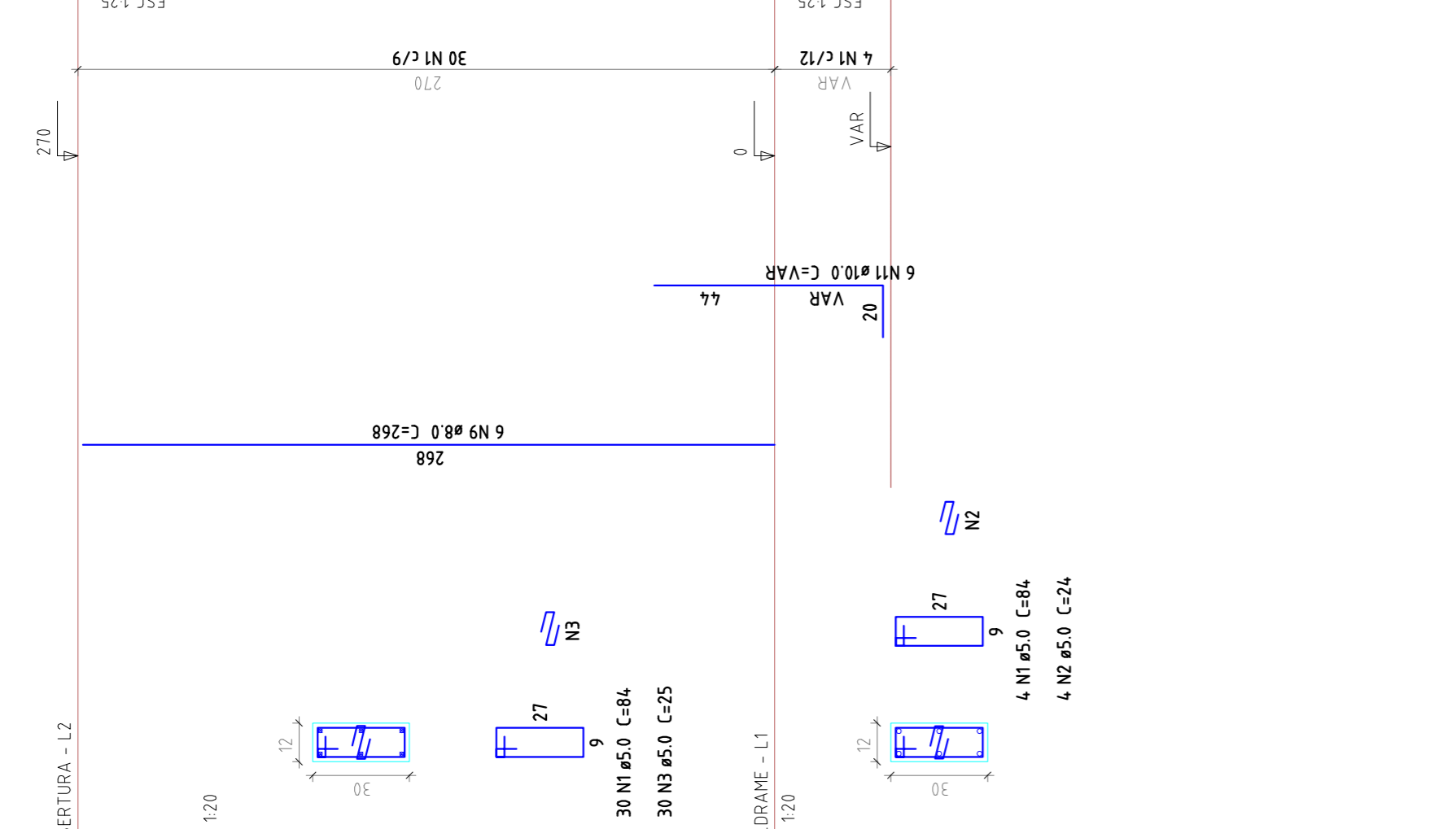
P2



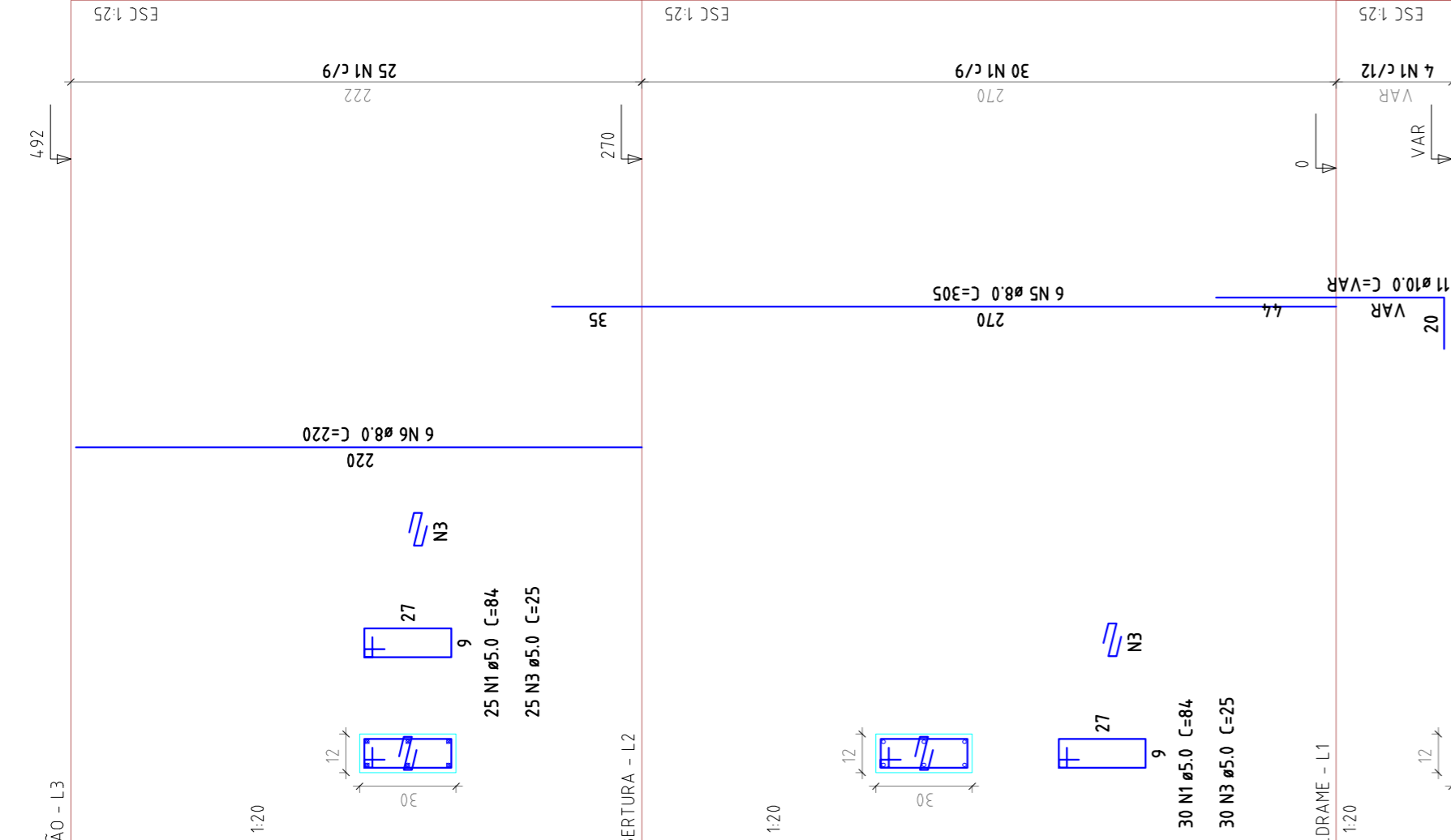
P4



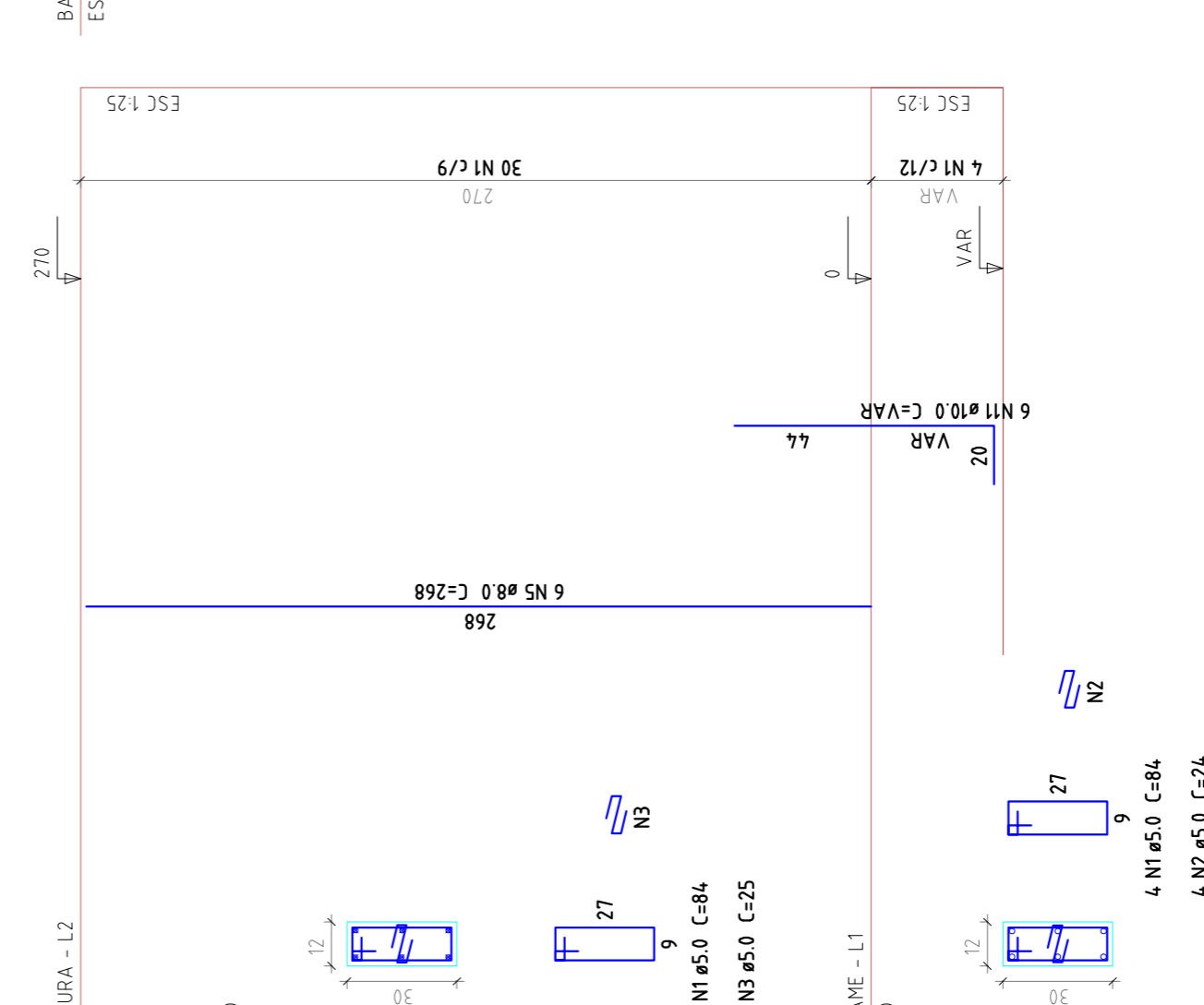
P5



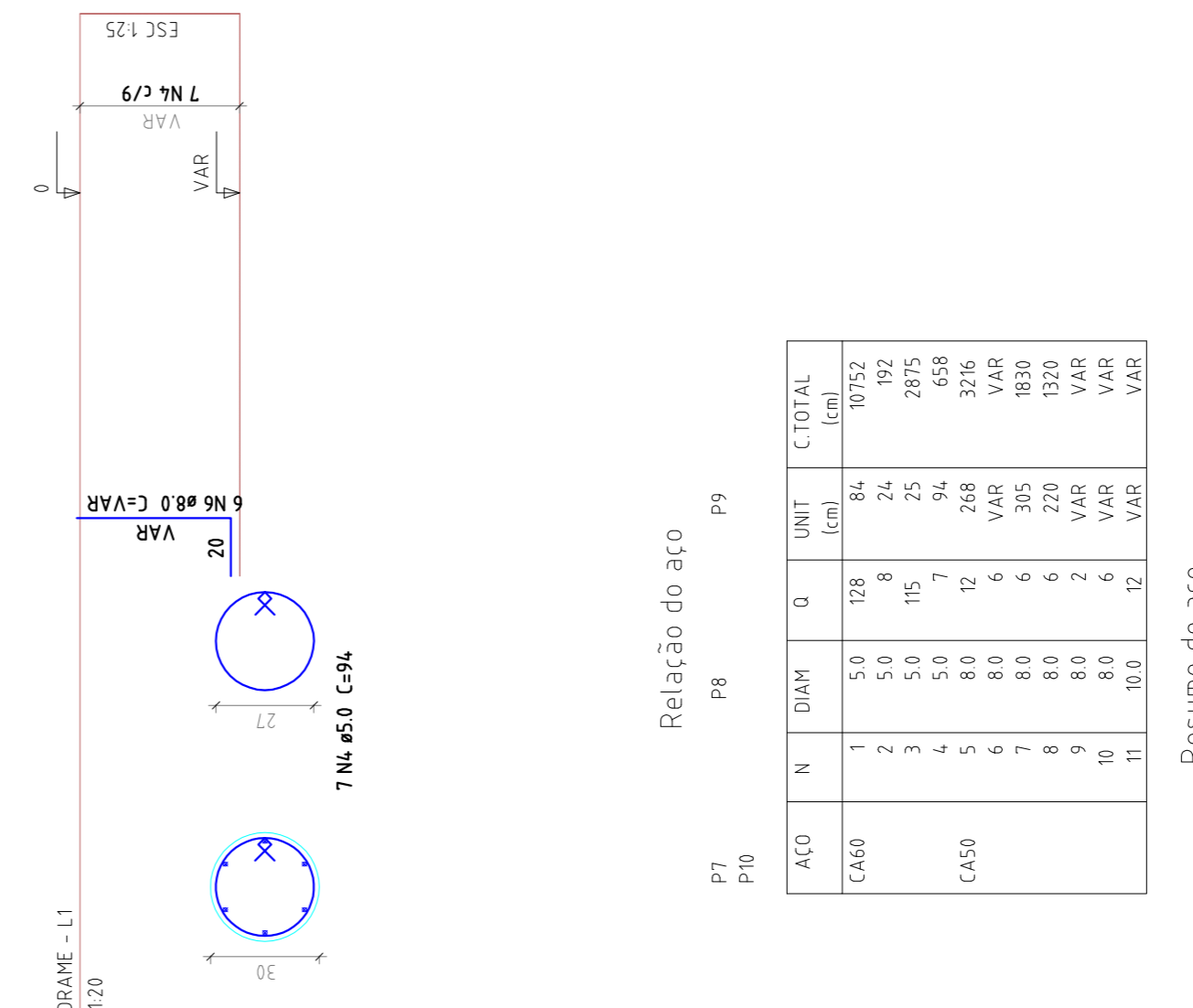
P6



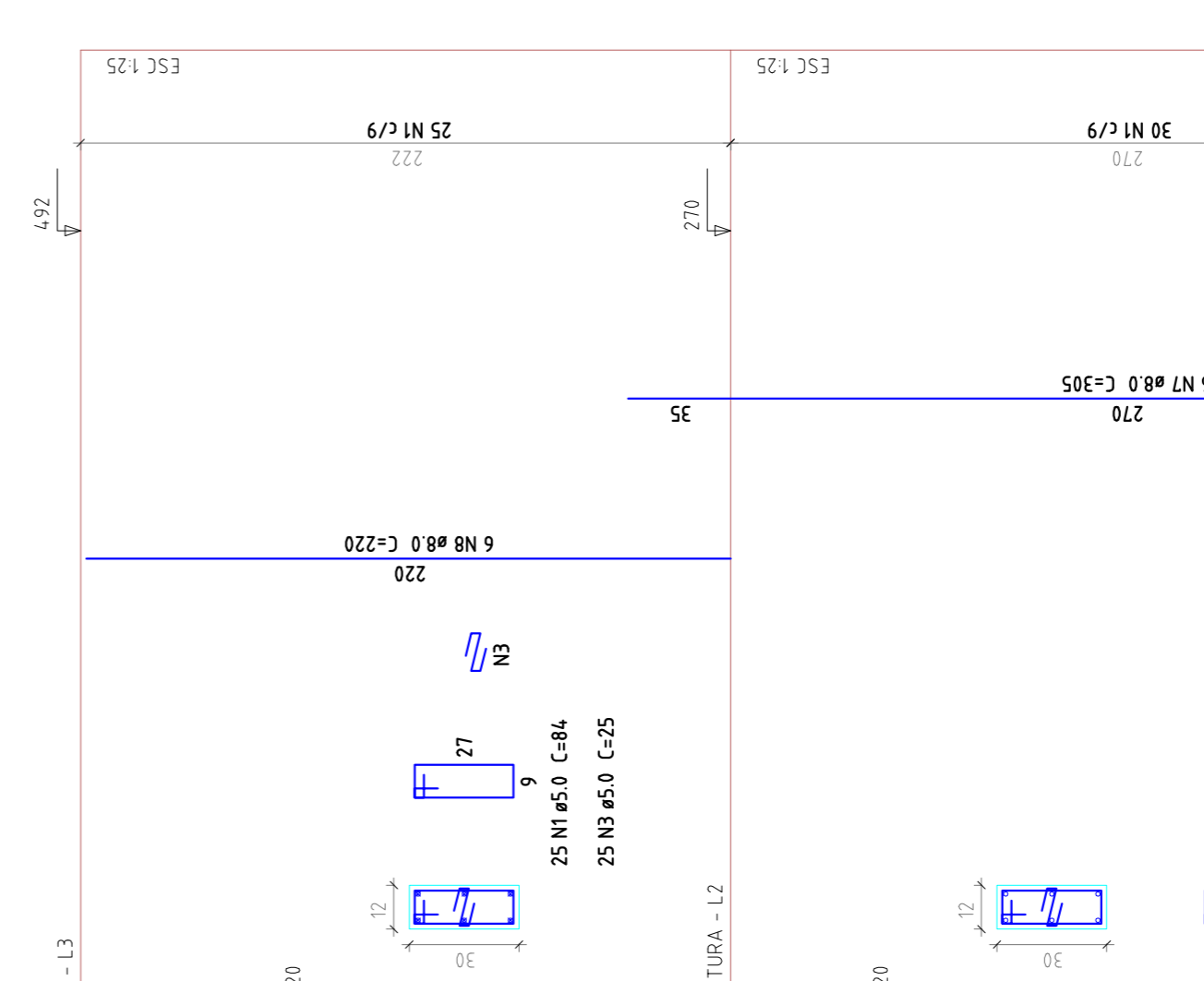
P7



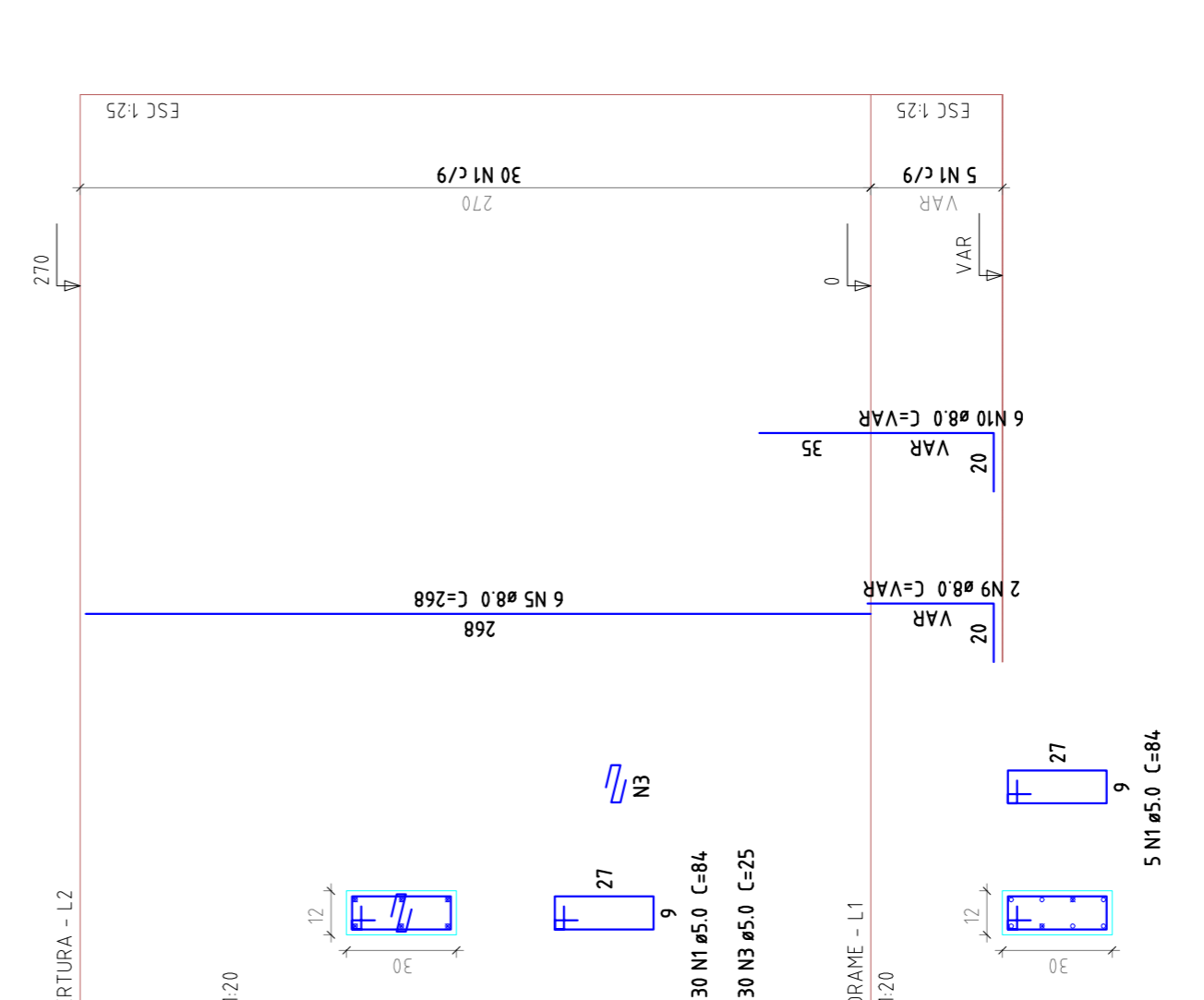
P8



P9



P10



Relação do aço

ACO	N	DIAM	Q	UNIT	C TOTAL
		(cm)	(cm)		(cm)
CA60	1	5.0	246	84	20664
	2	5.0	16	24	384
	3	5.0	275	25	5625
	4	5.0	18	25	2250
CAS0	5	8.0	18	305	5490
	6	8.0	18	220	3960
	7	8.0	2	VAR	VAR
	8	8.0	6	VAR	VAR
	9	8.0	12	268	3276
	10	8.0	6	VAR	VAR
	11	10.0	24	VAR	VAR

Resumo do aço

ACO	DIAM	C TOTAL	PESO - 10 %
	(mm)	(m)	(kg)
CA50	8.0	138.1	59.9
CA60	10.0	25.7	17.4
		5.0	273.4
			46.3

Vol. de concreto total (C=20) = 0.85 m³
 Área de forma total = 19.34 m²



PROJETO DE IMPLANTAÇÃO E MODERNIZAÇÃO DE INFRAESTRUTURA PARA ESPORTE, EDUCACIONAL, RECREATIVO E DE LAZER

ESTRUTURA CONCRETO

RUA DR PEDRO LUDOVICO TEIXEIRA COM AV BRASÍLIA
 SETOR LAGO BONITO - CORUMBÁ/MS

Proprietário: Prefeitura Municipal de Corumbá/MS

Aluno do Projeto: Eng. Civil Gabriel Costa Jacone
 CREA: 17904/AF-GO

RT:

Condição:
 Forma da Cobertura e Oitão do Centro Aquático
 Pilar do Centro Aquático

Prancha: 02/04

Revisão: R00

Arquivo: ESTRUTURA_PARQUE_REV00.dwg

Data: Fev / 2014

Escala: Indefinida

Revisão: R00

Arquivo: ESTRUTURA_PARQUE_REV00.dwg