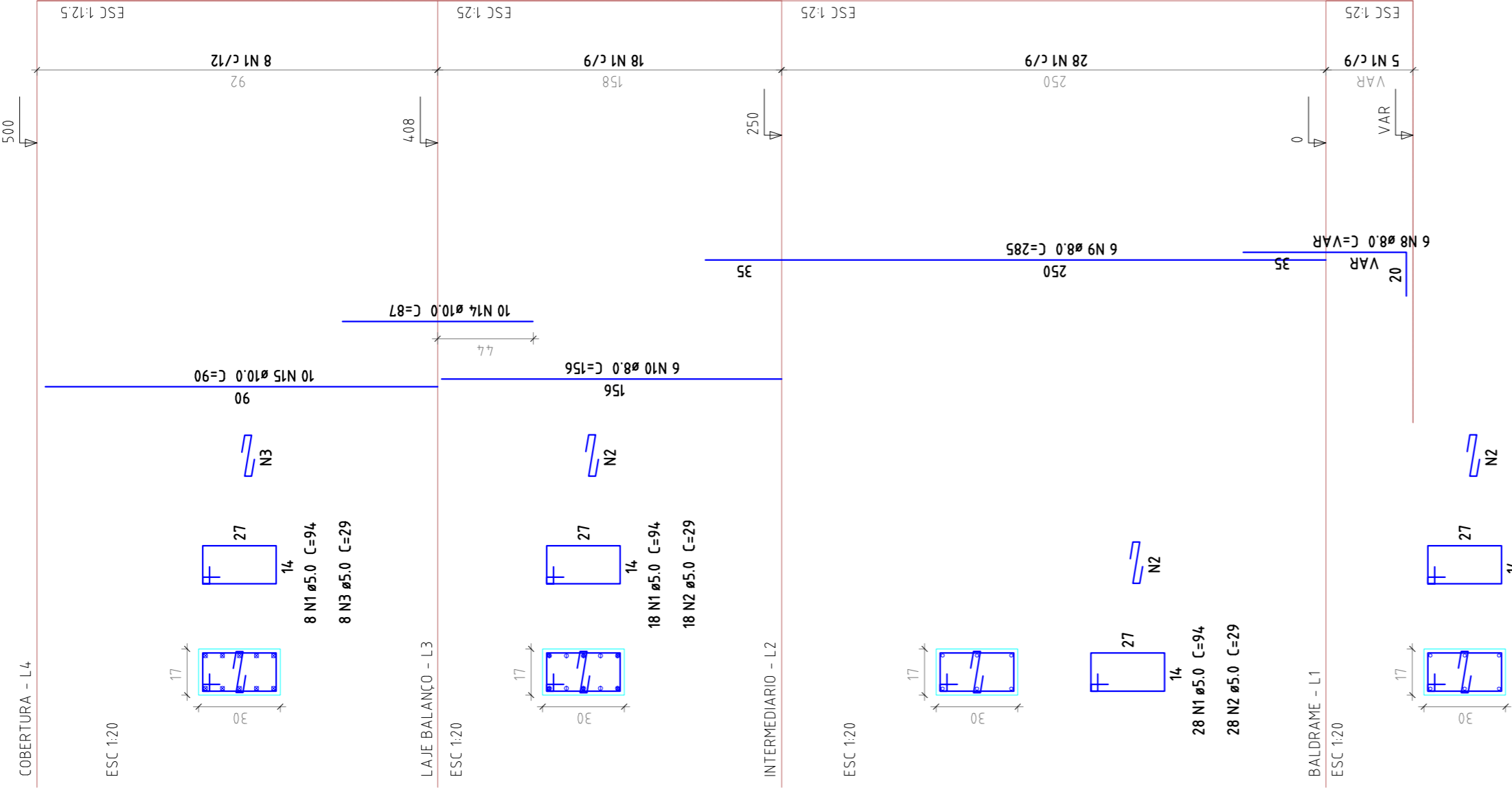
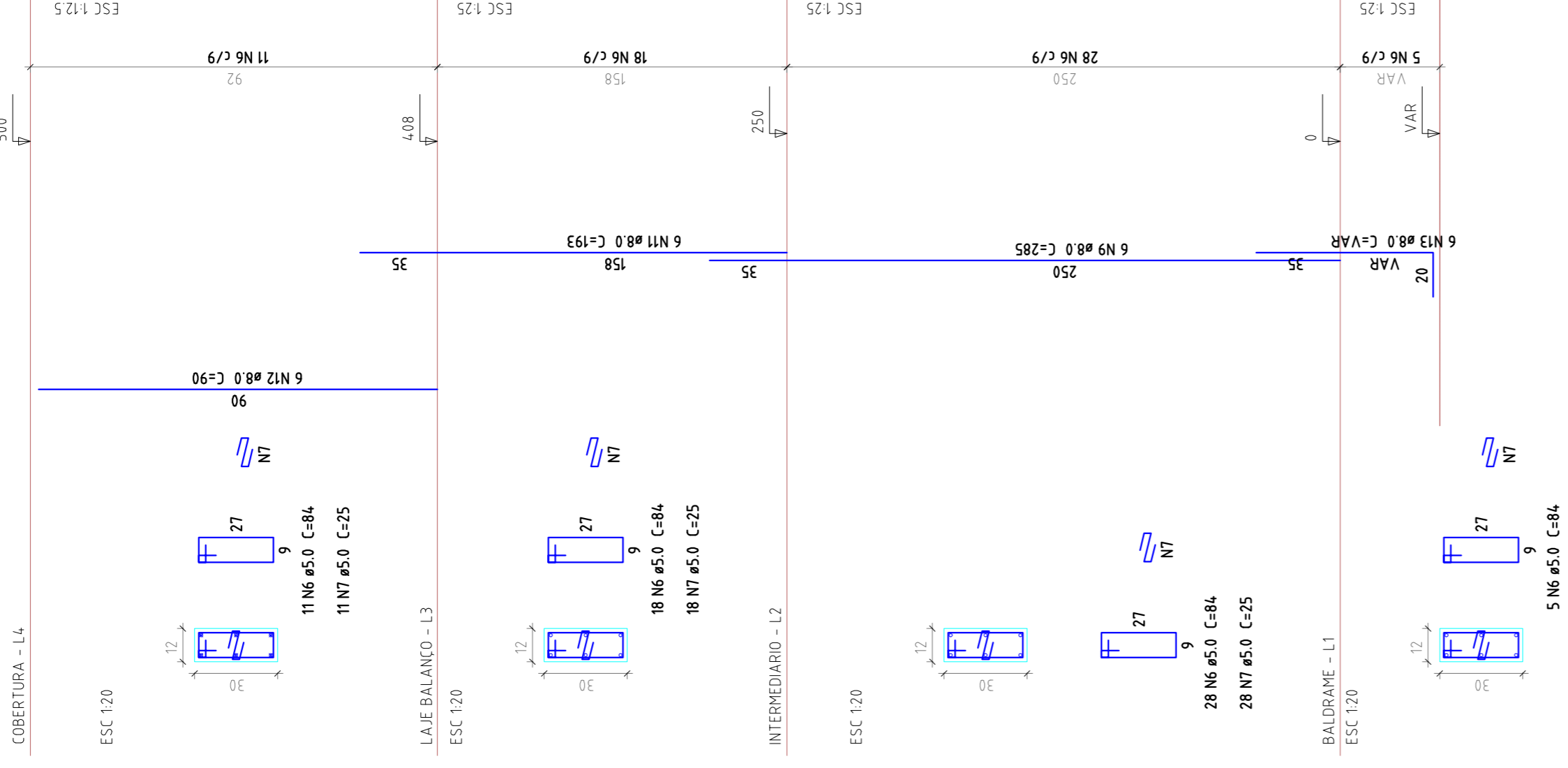


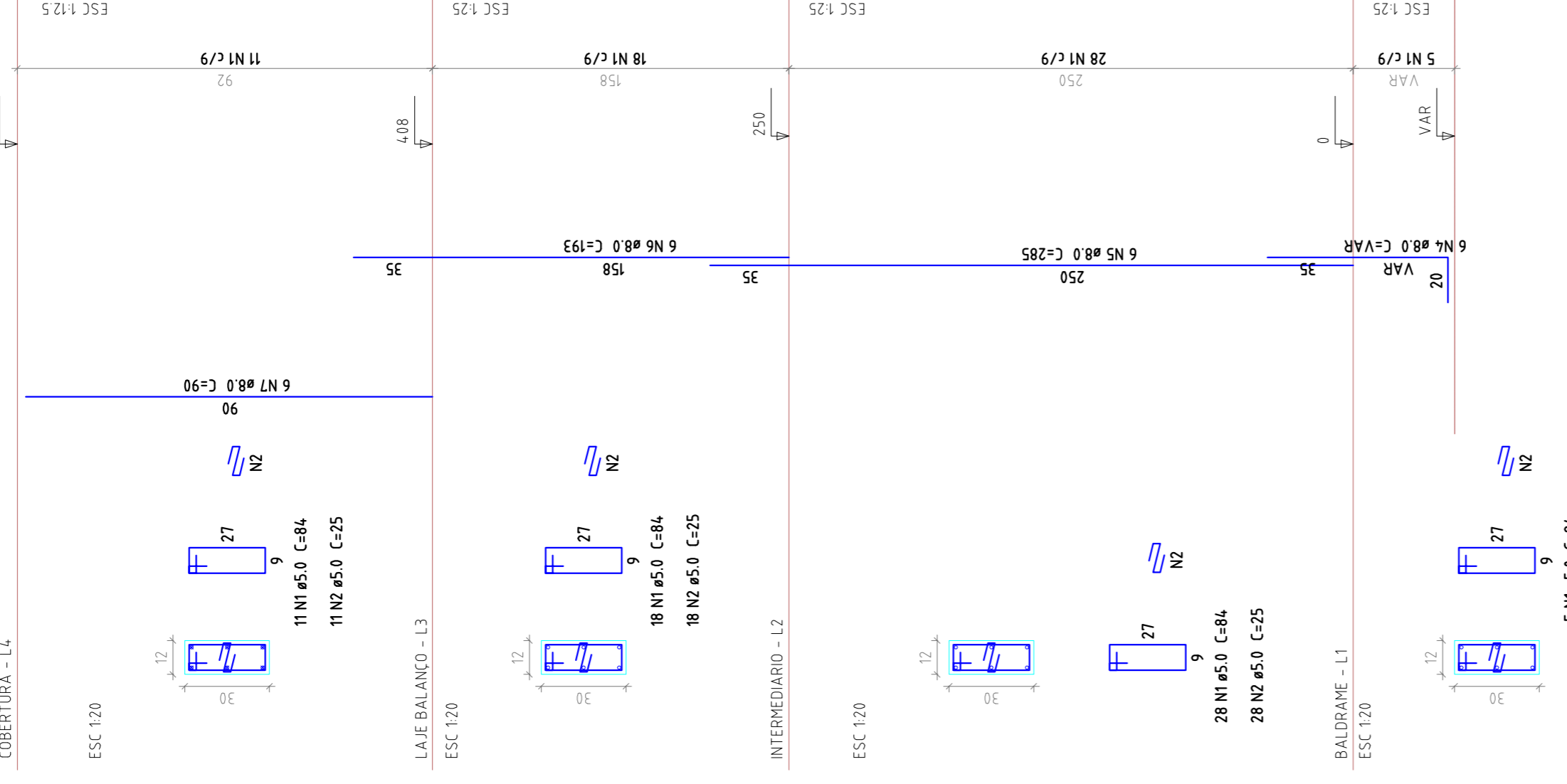
P5



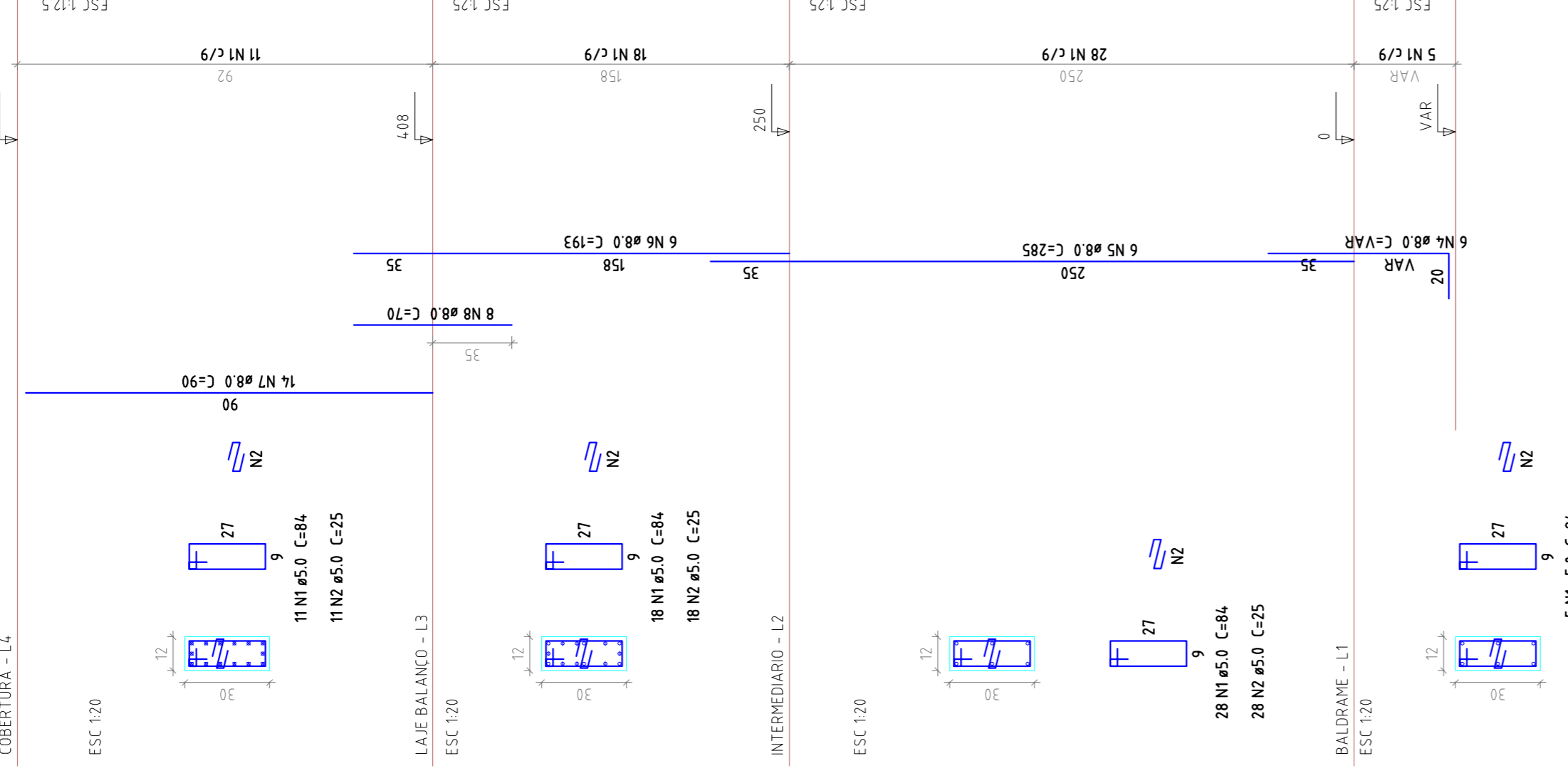
P6



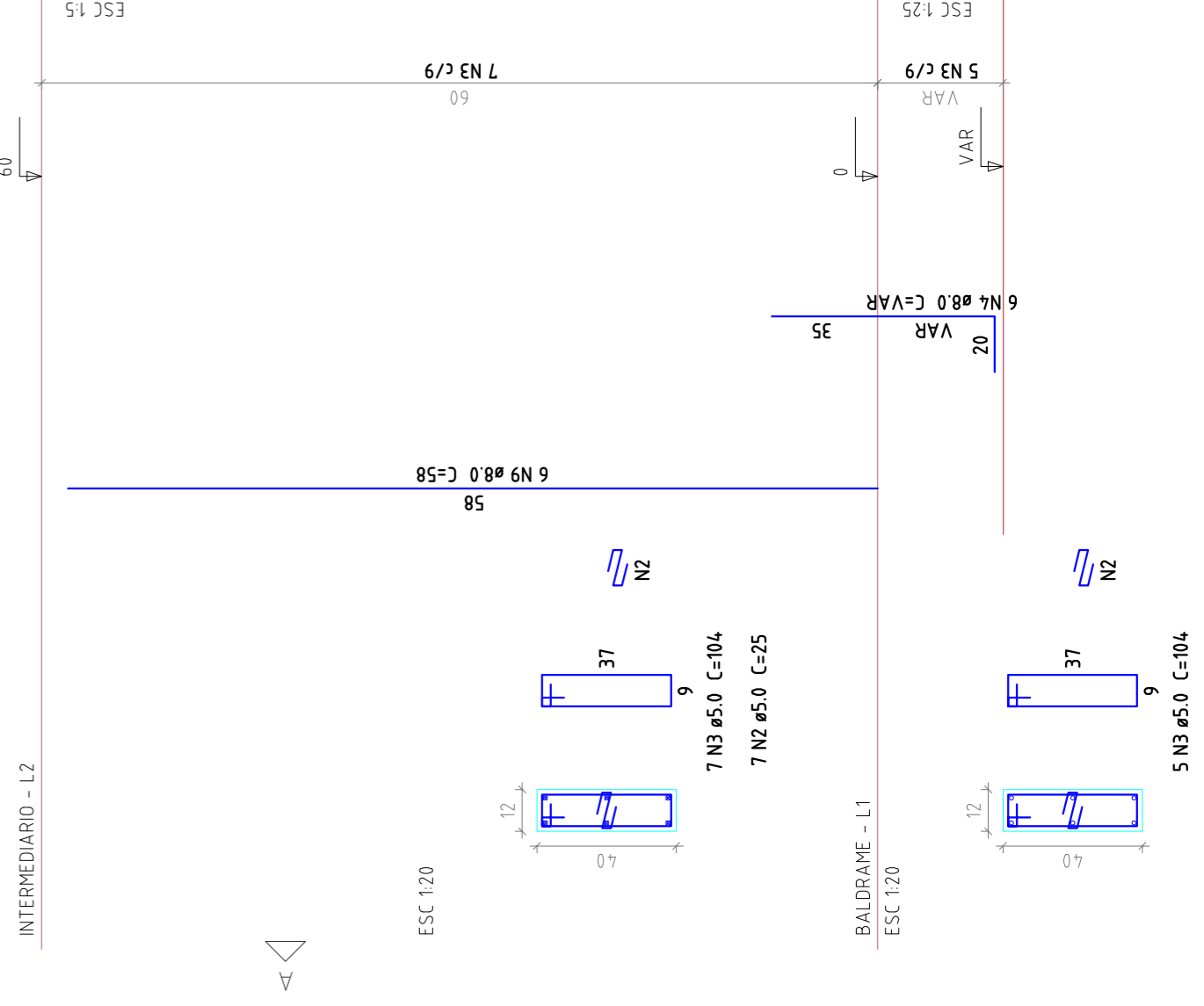
P7



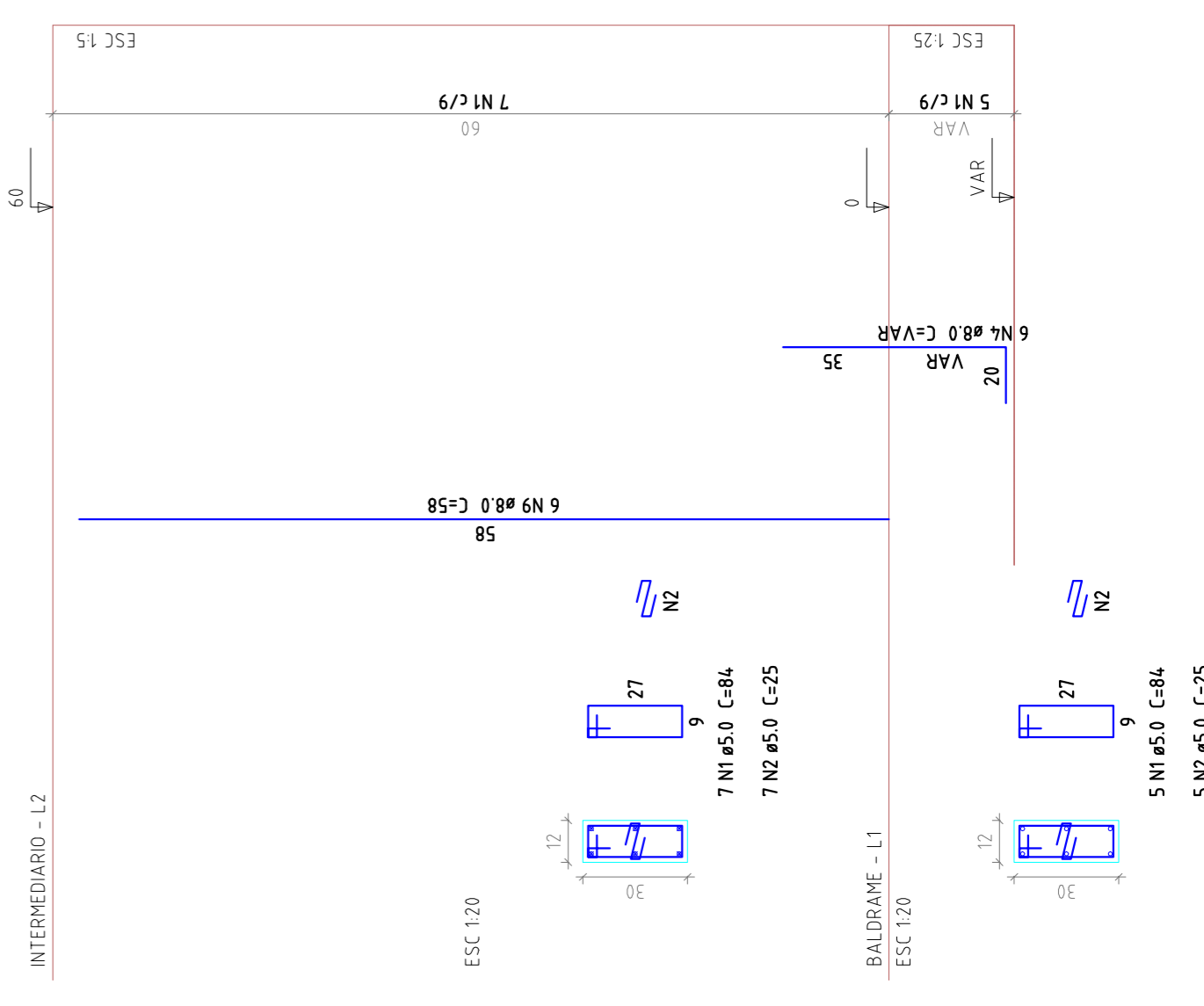
P8



P9



P12



Relação do aço

ALÇO	N	DIAM	Q	UNIT	C TOTAL
P10	P8	P11	P9	P12	(Kg)
CA60	1	5.0	760	84	288.0
CA60	2	5.0	250	25	63.50
CA50	3	5.0	12	104	124.8
CA50	4	8.0	36	VAR	68.0
CA50	5	8.0	24	285	463.2
CA50	6	8.0	24	193	320.0
CA50	7	8.0	36	90	475.2
CA50	8	8.0	12	58	69.6
CA50	9	8.0	12	58	69.6

Resumo do aço

ALÇO	DIAM	C TOTAL	PESO - 10 %
CA60	(mm)	(Kg)	(Kg)
CA60	8.0	1938	85.9
CA50	5.0	233.4	49.1
<b>PESO TOTAL</b>			
CA50	858		
CA60	457		

Vol. de concreto total (C=20) = 0.87 m³  
 Área de forma total = 20.29 m²

RT: \_\_\_\_\_  
 Conteúdo: **Pilares Quadra Coberta**  
 Prancha: **13 / 27**

Escala indicada: \_\_\_\_\_  
 Data: **Fev / 2014**  
 Arquivo: **ESTRUTURA\_PARQUE\_REV00.dwg**  
 Revisão R00: **27/02/14-Gabriel Játome**

**RM CONSULTORIA E CONSTRUÇÕES LTDA**

PROJETO DE IMPLANTAÇÃO E MODERNIZAÇÃO DE INFRAESTRUTURA PARA ESPORTE, EDUCACIONAL, RECREATIVO E LAZER

**ESTRUTURA CONCRETO**

RUA DR. PEDRO LUDOVICO TEIXEIRA COM AV. BRASÍLIA  
 SETOR LAGO BONITO - CORUMBÁ/MS

Proprietário: Prefeitura Municipal de Corumbá/MS  
 Autor do Projeto: Eng. Civil Gabriel Costa Játome  
 CREA: 17904/AF-GO

Áreas:  
 Terreno: 108830.15m²  
 Total Const.: 3.914,56m²