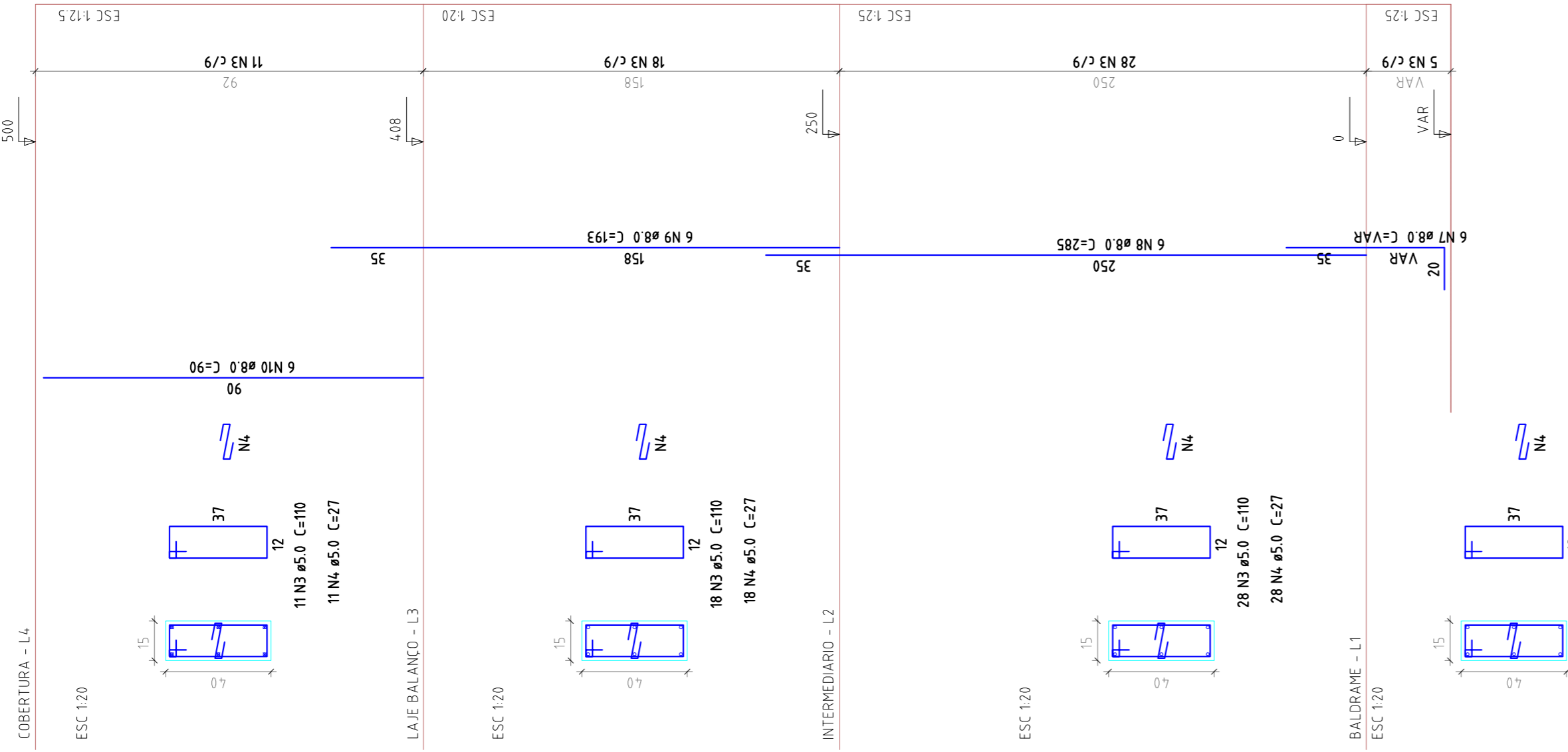
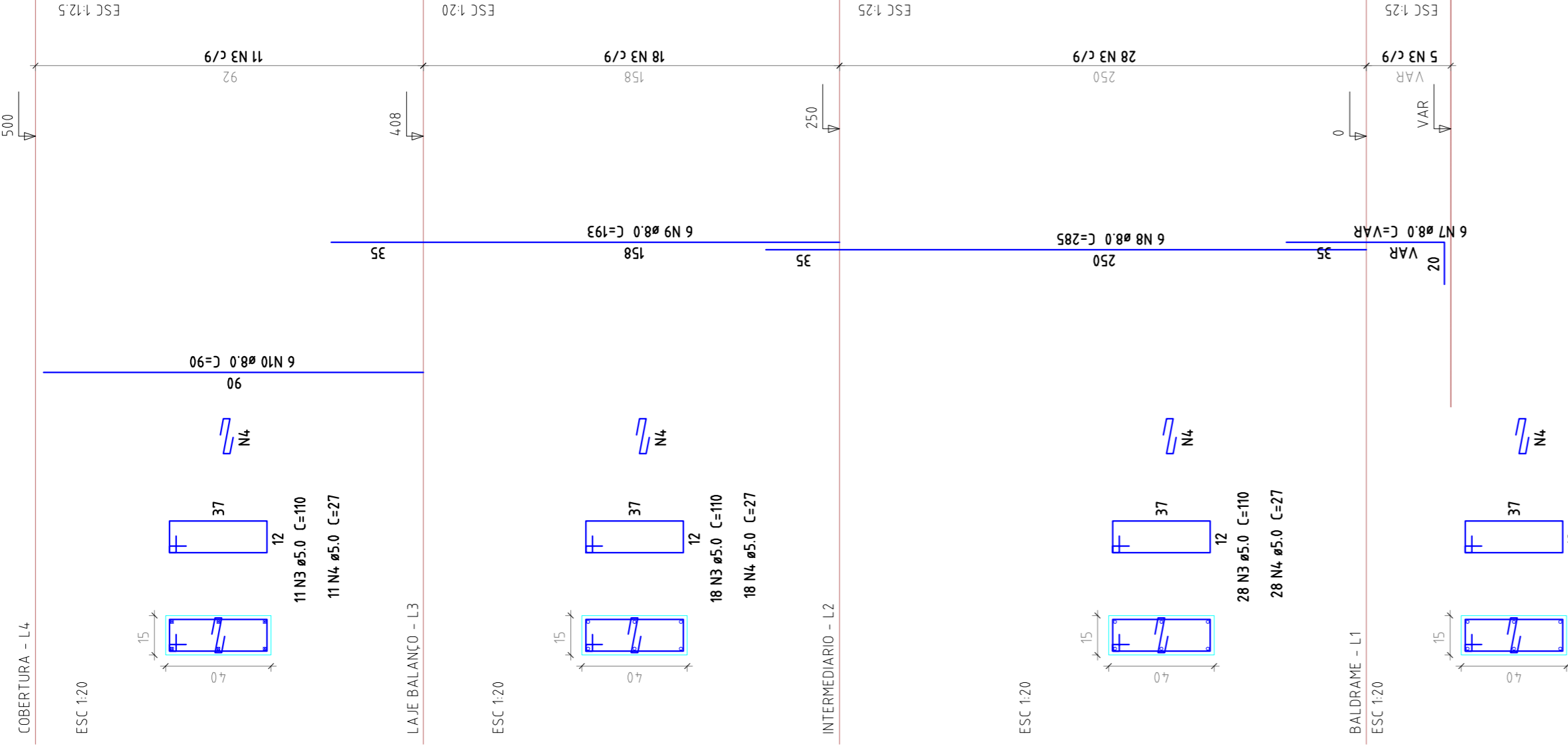


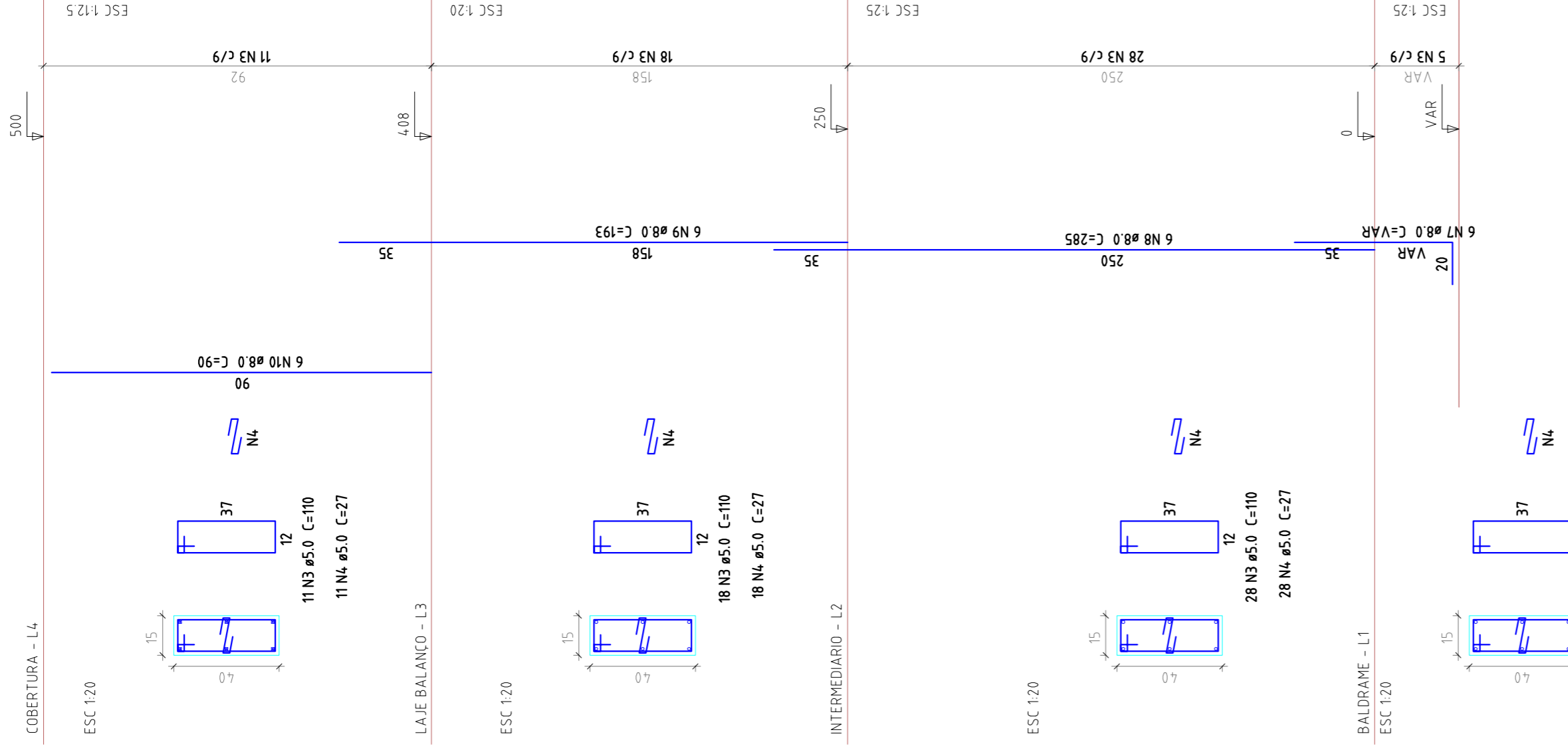
P32



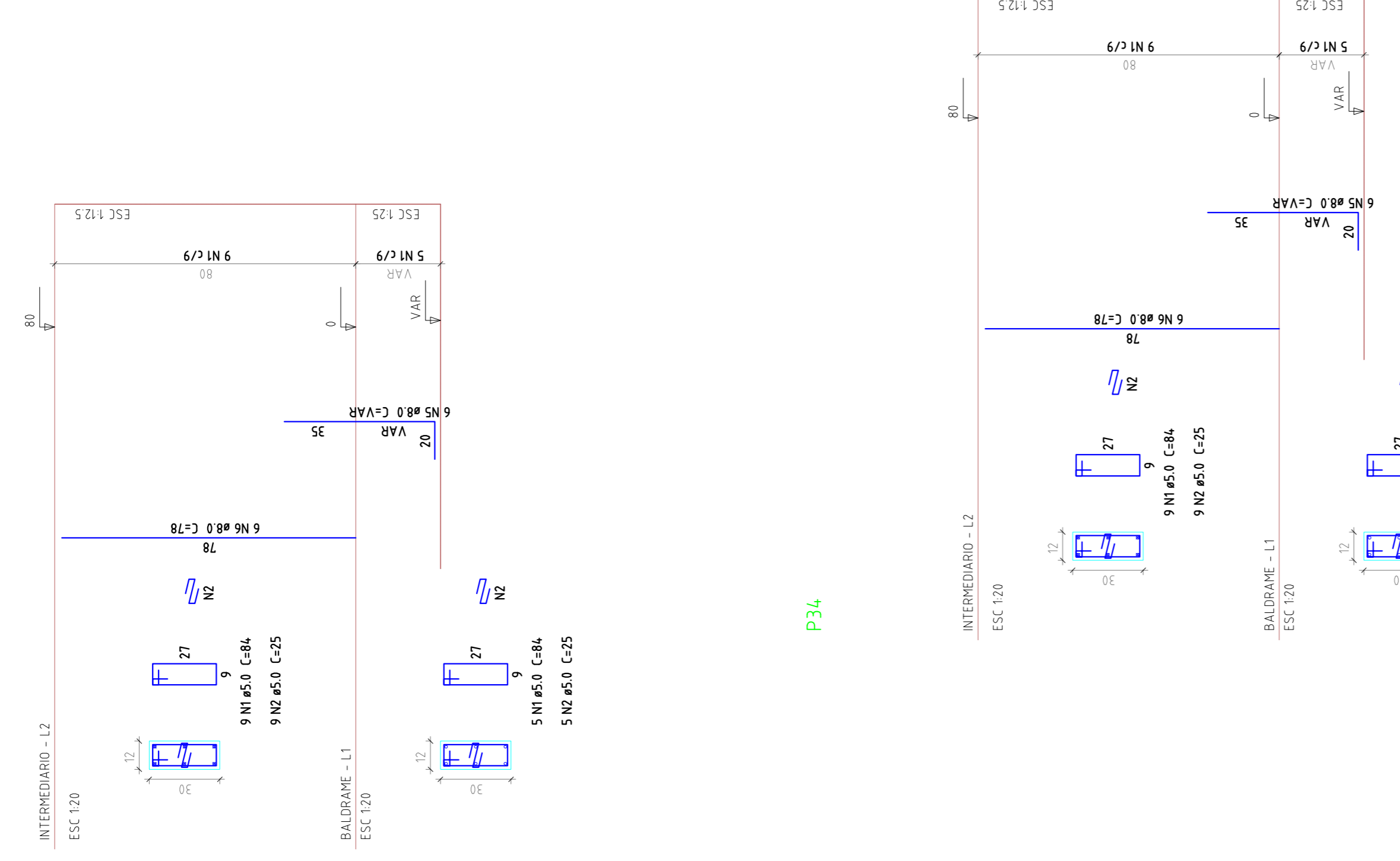
P33



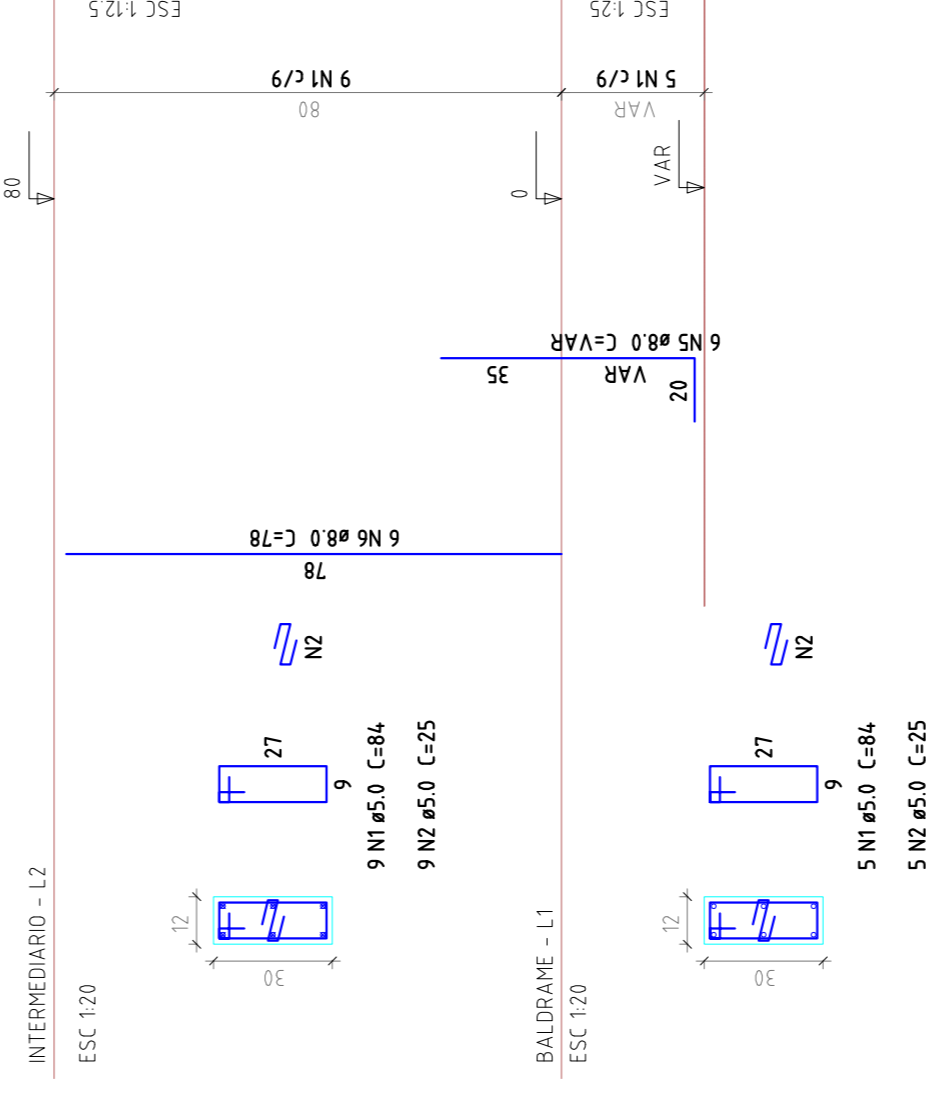
P36



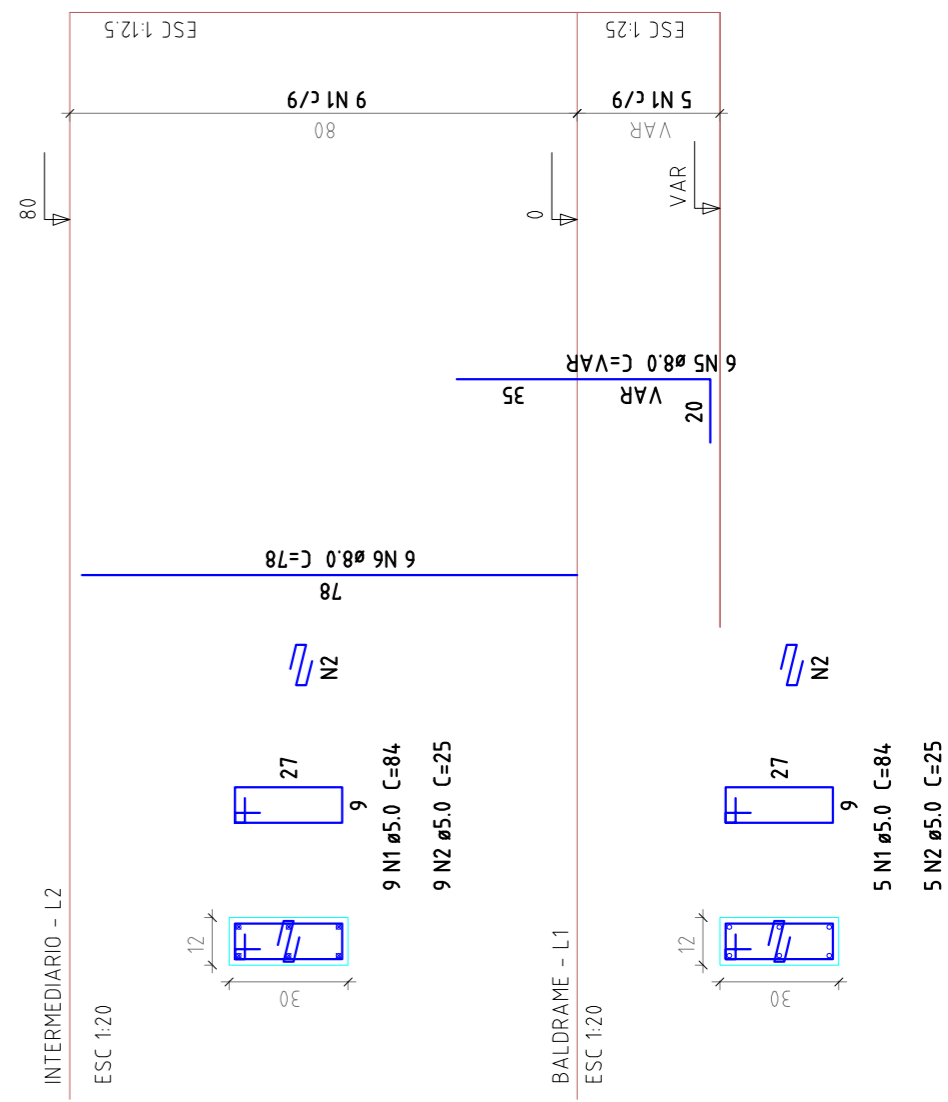
P31



P34



P35



Relação do aço

ACO	N	DIAM	Q	UNIT	C TOTAL
					(cm)
CA60	1	5.0	4.2	84	3528
	2	5.0	4.2	25	1050
	3	5.0	186	110	20460
CA50	4	5.0	186	27	5022
	5	8.0	18	VAR	VAR
	6	8.0	18	VAR	VAR
	7	8.0	18	VAR	VAR
	8	8.0	18	285	5100
	9	8.0	18	193	3474
	10	8.0	18	90	1620

Resumo do aço

ACO	DIAM	C TOTAL	PESO - 10%
		(cm)	(kg)
CA50	8.0	150.7	65.4
CA60	5.0	300.6	51
PESO TOTAL			
CA50	65.4		
CA60	51		

Vol. de concreto (Vol) (C=20) = 111 m³

Área de forma total = 210,97 m²

**RM** CONSULTORIA E CONSTRUÇÕES LTDA

PROJETO DE IMPLANTACÃO E MODERNIZAÇÃO DE INFRAESTRUTURA PARA ESPORTE, EDUCACIONAL, RECREATIVO E LAZER

ESTRUTURA CONCRETO

RUA DR. PEDRO LUDOVICO TEIXEIRA COM AV. BRASÍLIA  
SETOR LAGO BONITO - CAMPINA DO GUAPO

Proprietário: Prefeitura Municipal de Concombuho

Autor do Projeto: Eng. Civil Gabriel Costa Jacone  
CREA: 17904/AF-GO

RT:

Conteúdo:  
Pilares Quadra Coberta

Prancha  
11 / 27

Escala  
Indicada

Data  
Fev / 2014

Arquivo  
ESTRUTURA\_PARQUE\_REV00.dwg

Revisão R00

27/02/14-Gabriele Jacone