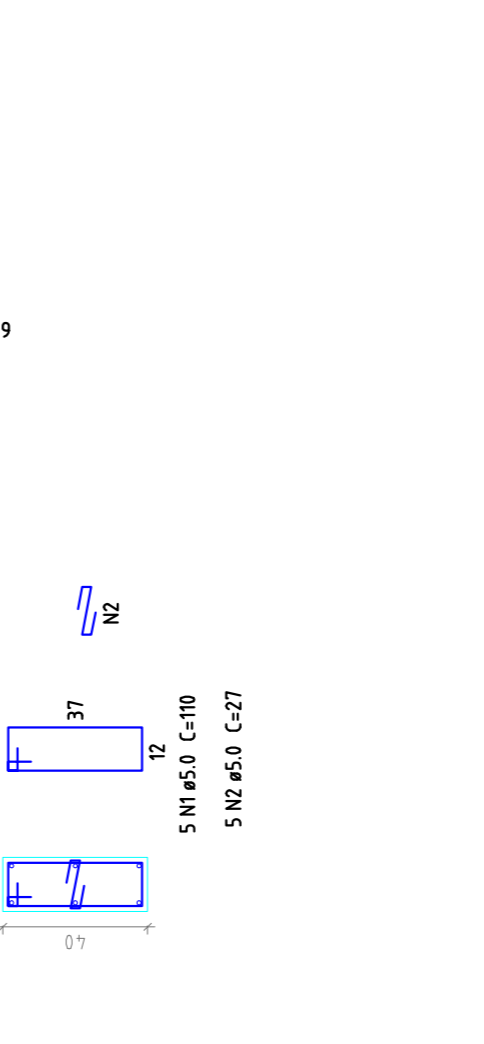
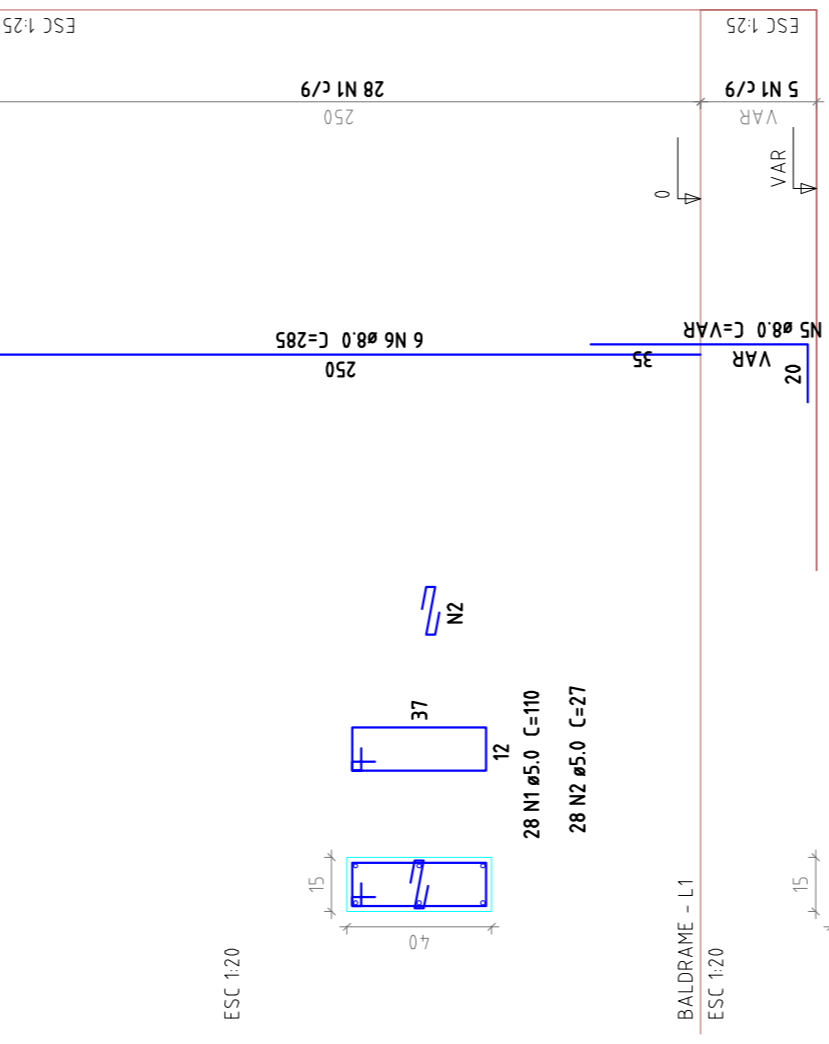
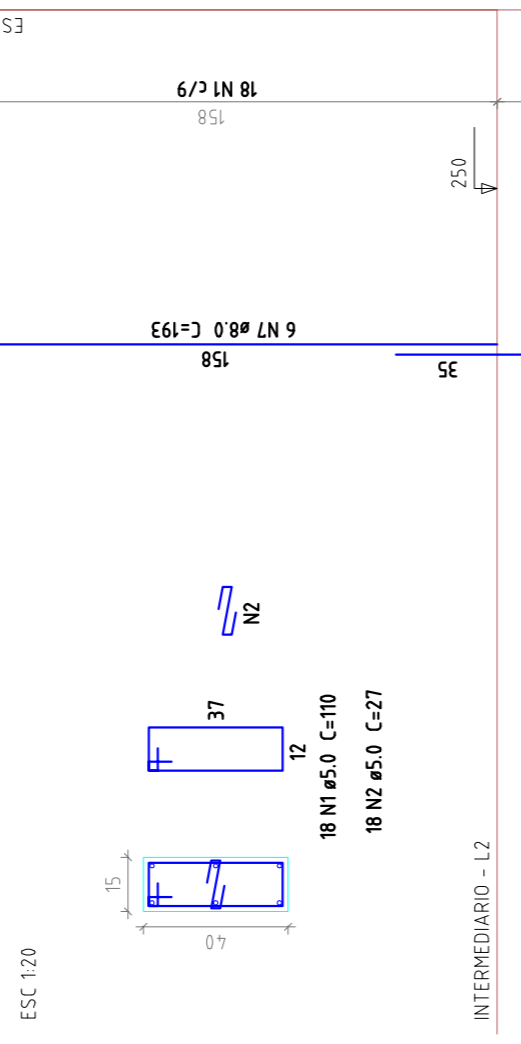
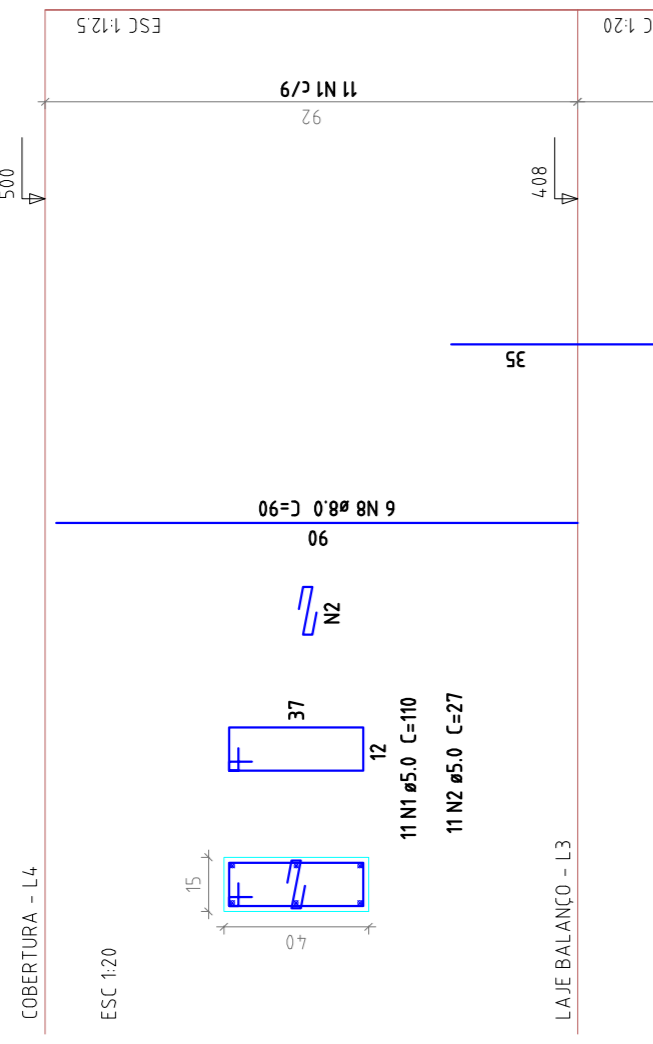
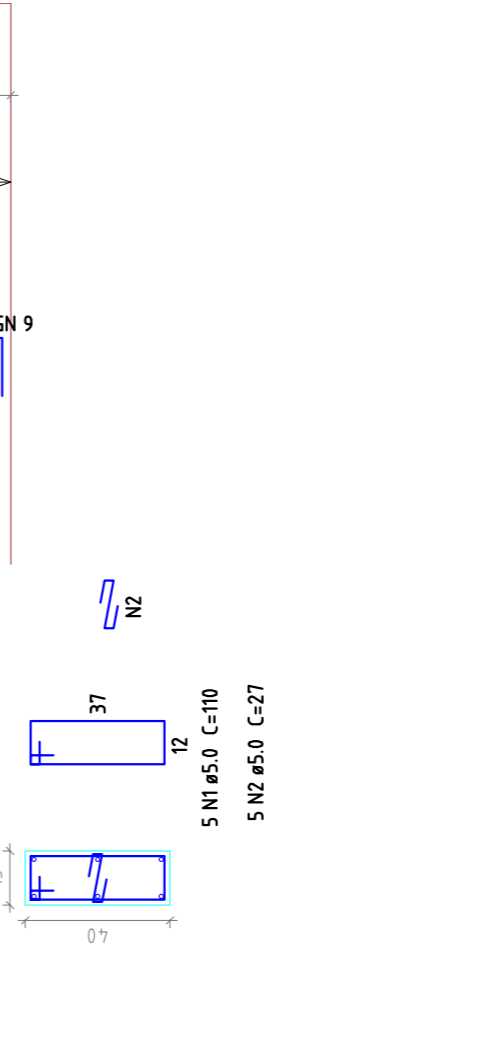
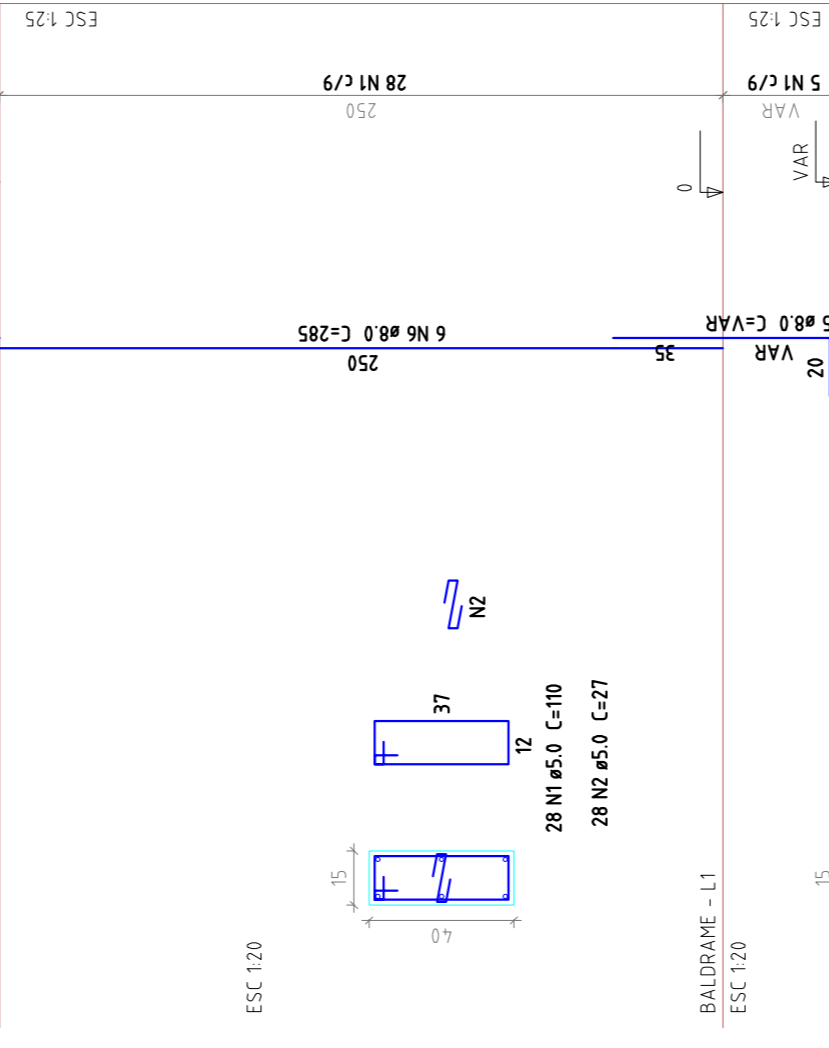
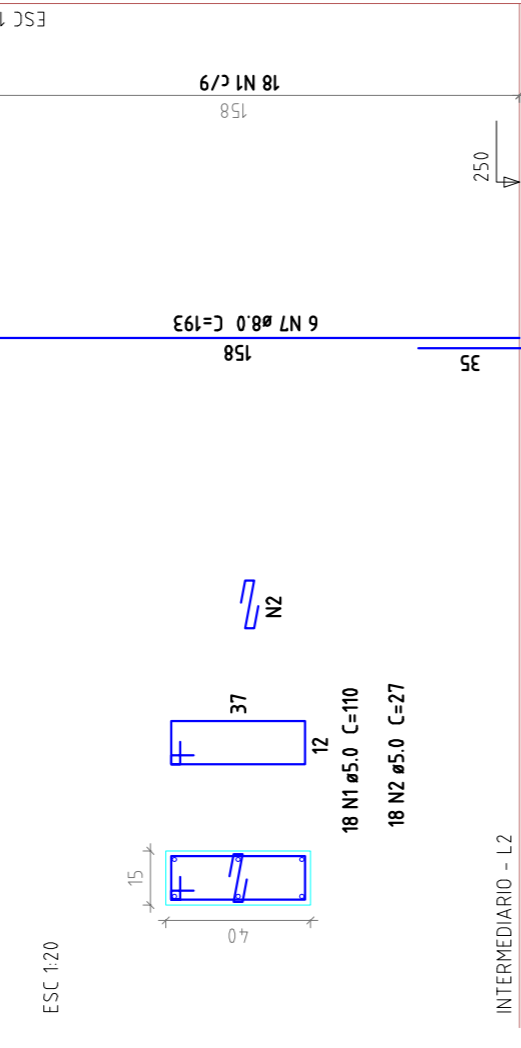
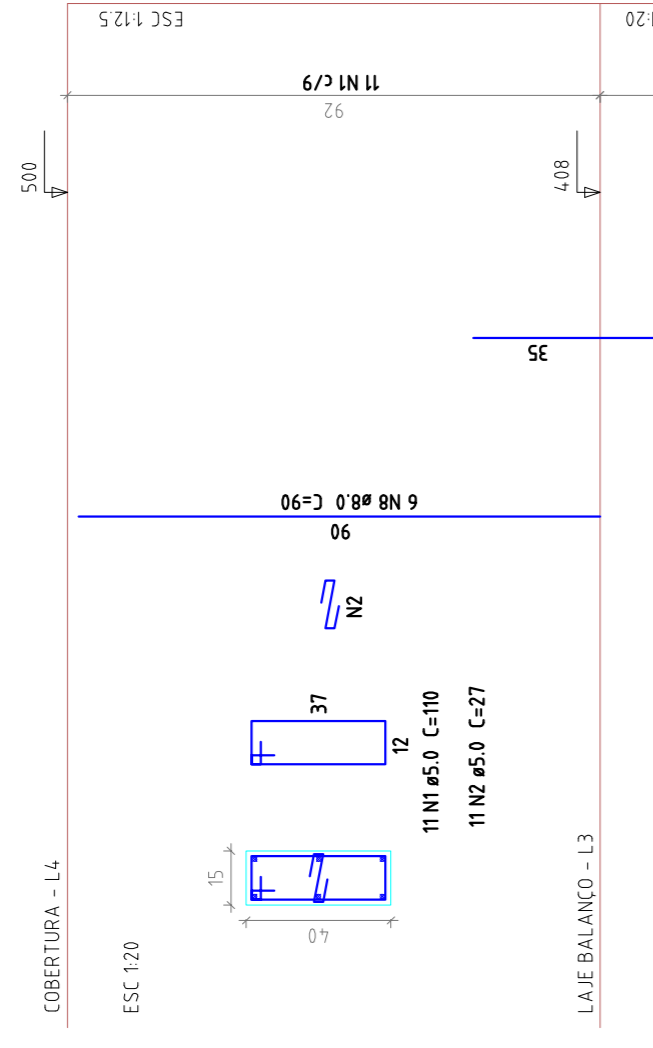


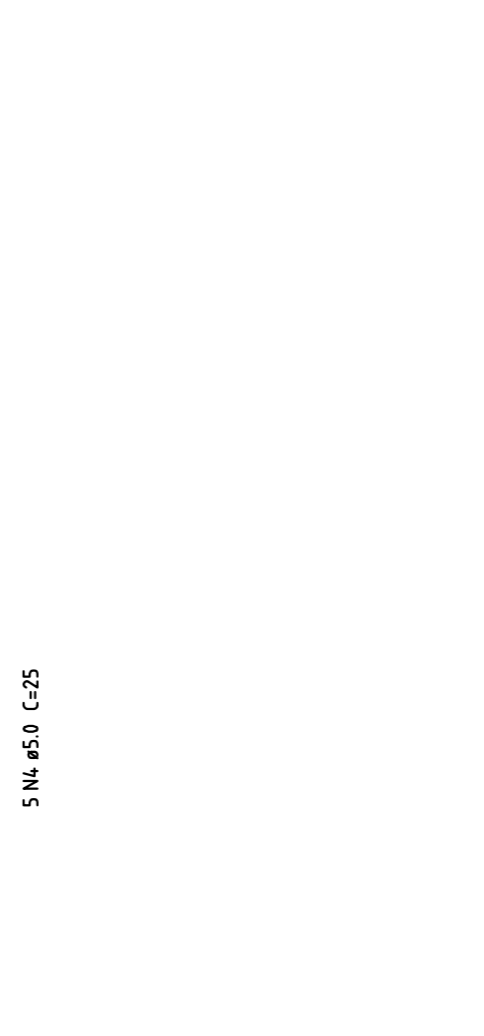
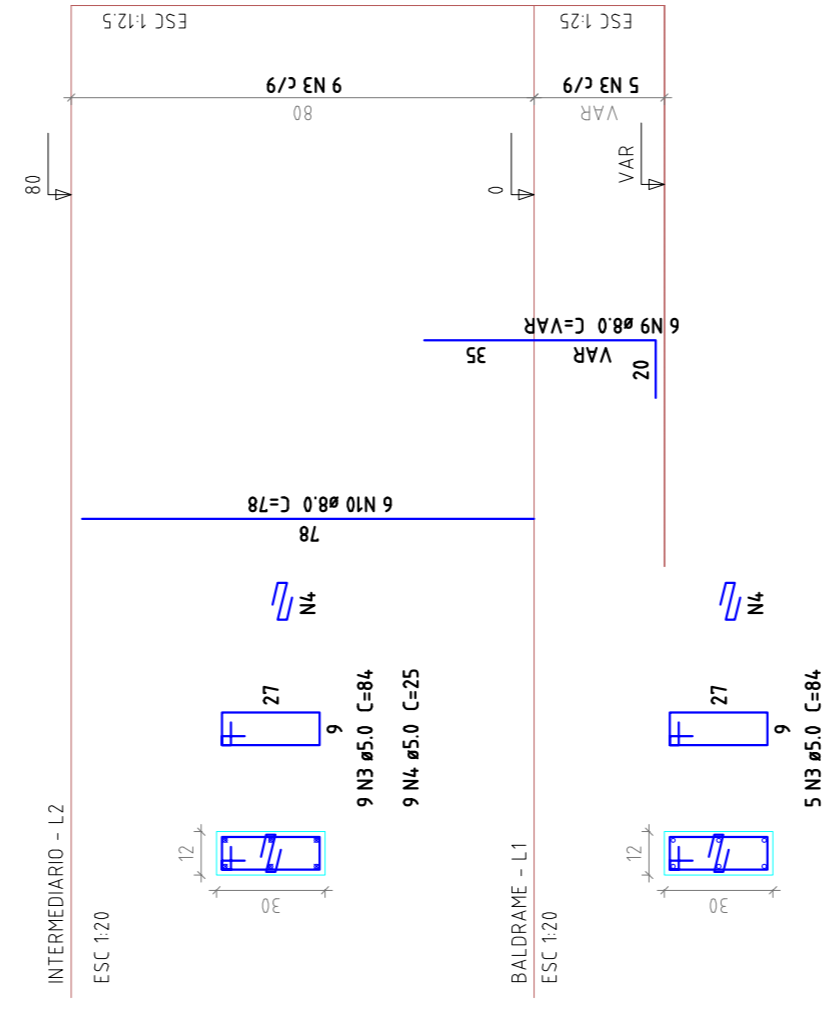
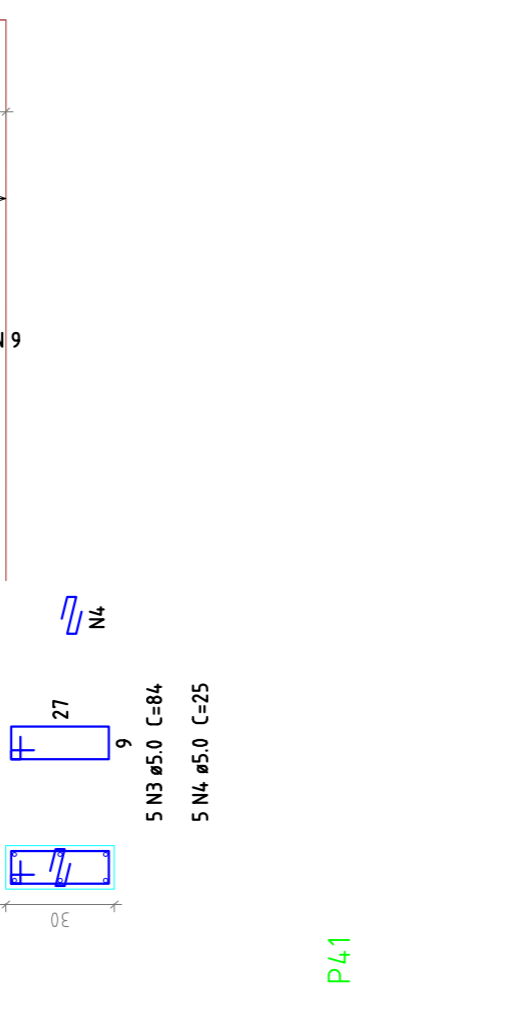
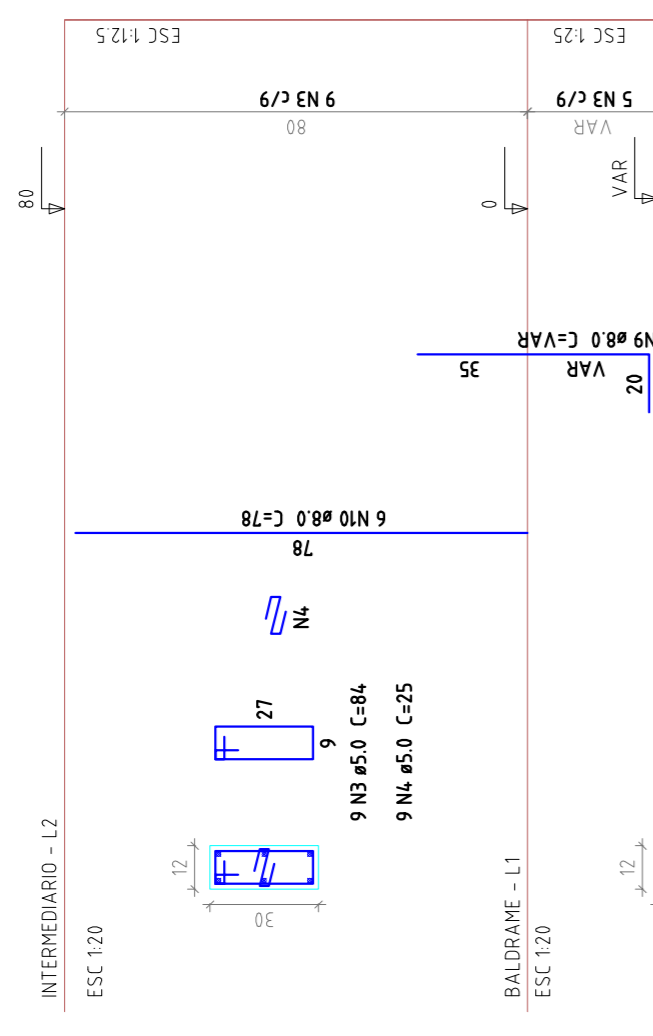
P37



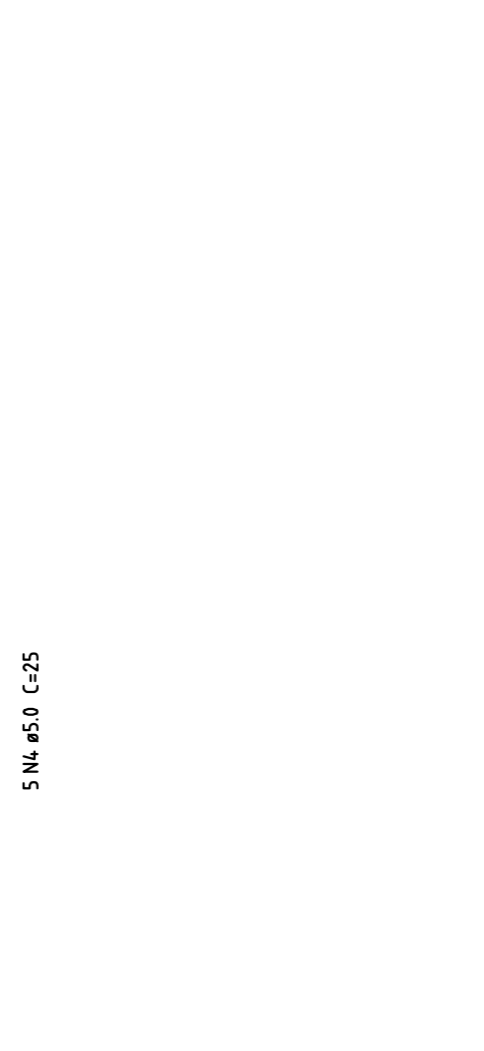
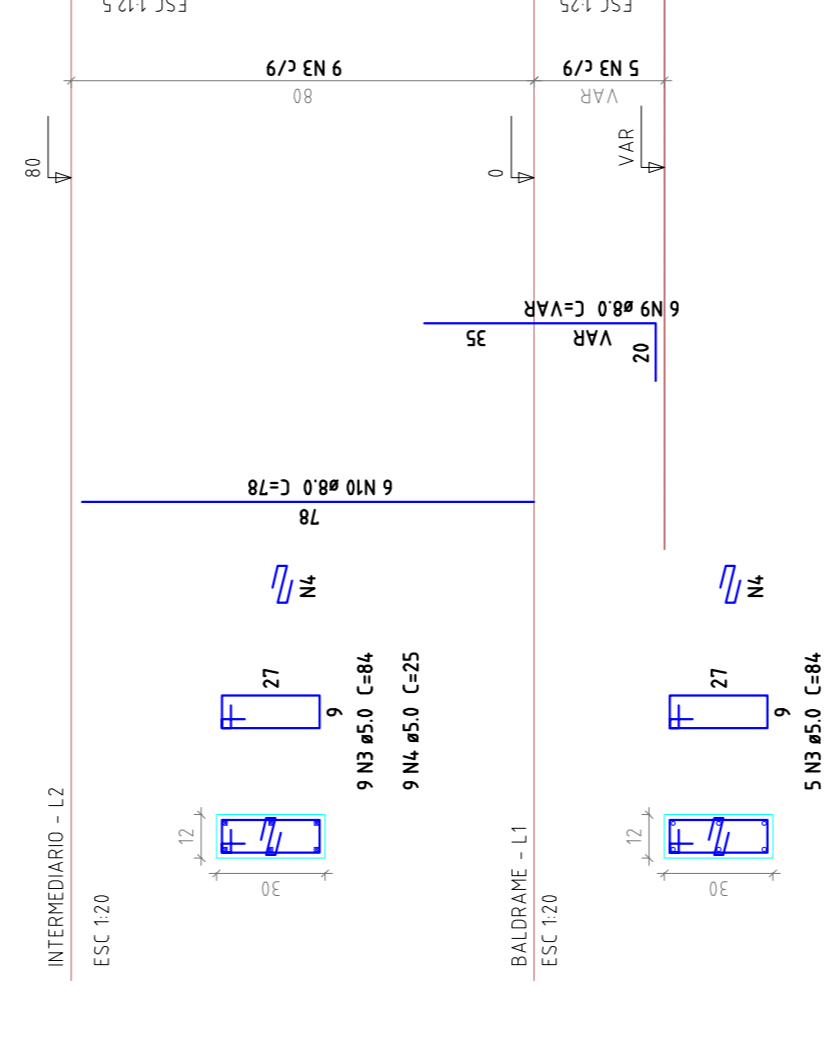
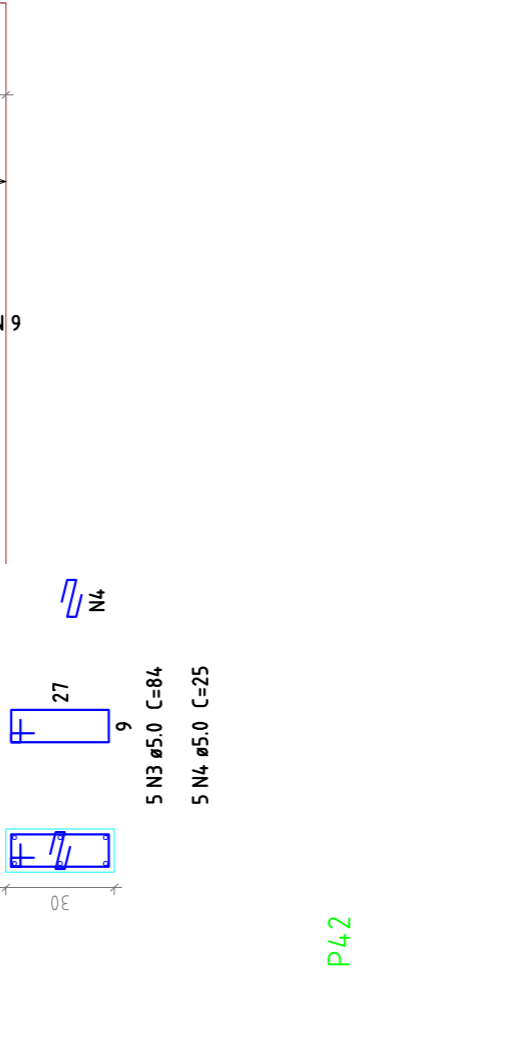
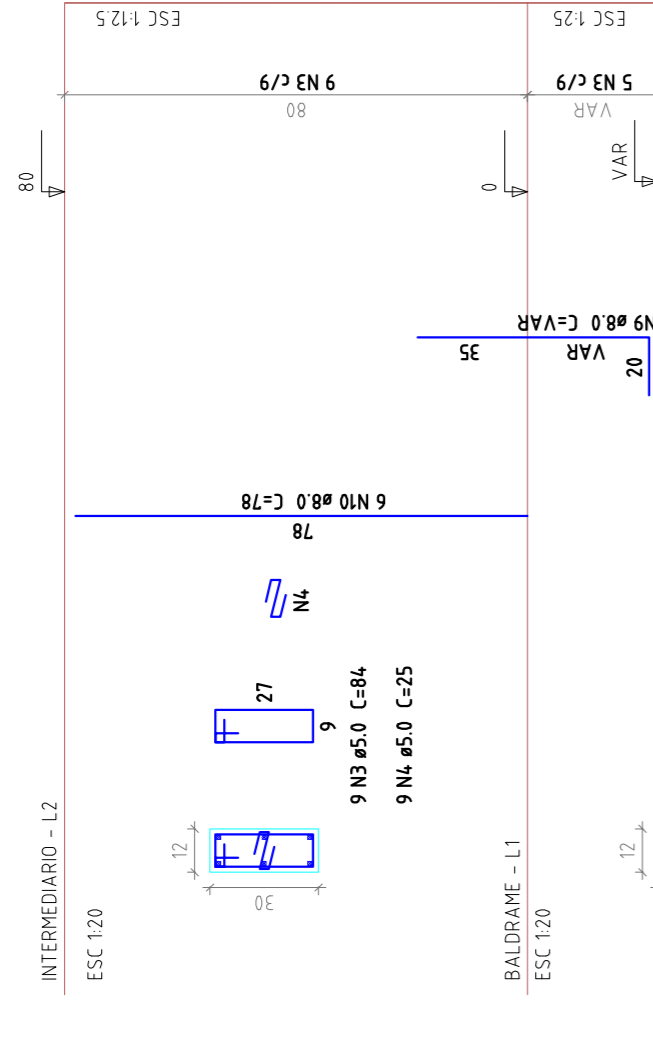
P40



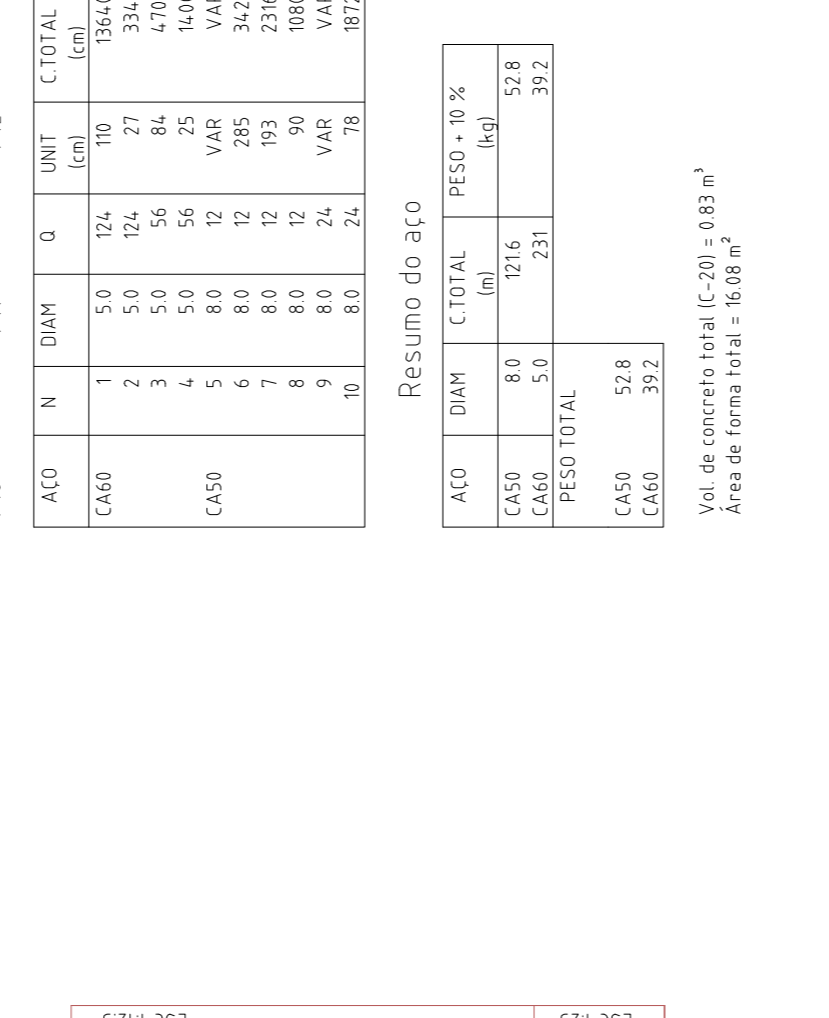
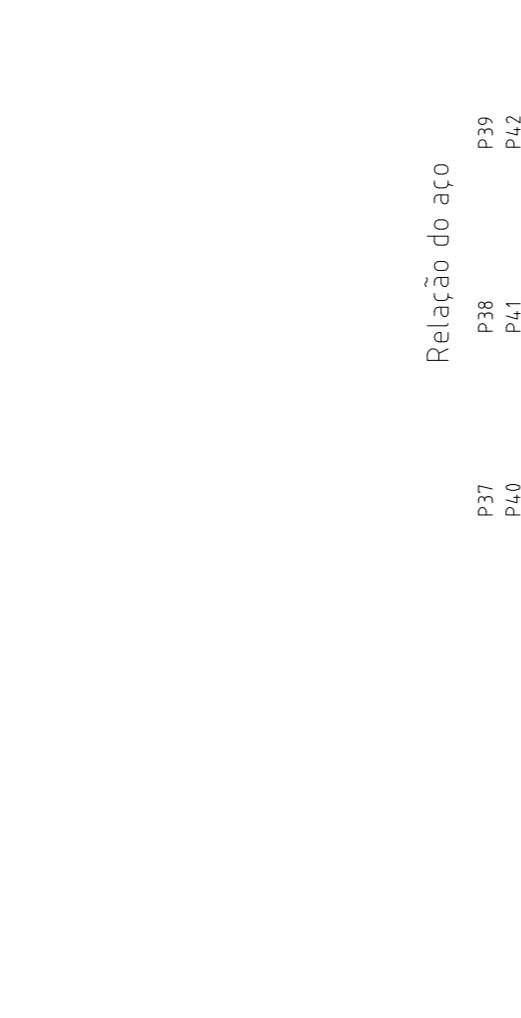
P41



P38



P39



Relação do aço

AD	N	DIAM	Q	UNIT	C TOTAL
CA60	1	5.0	124	(cm)	1364.0
	2	5.0	124	(cm)	1364.0
	3	5.0	54	(cm)	539.4
CA50	4	5.0	56	(cm)	470.4
	5	8.0	12	VAR	14.00
	6	8.0	12	VAR	14.00
CA50	7	8.0	12	VAR	34.20
	8	8.0	12	VAR	34.20
	9	8.0	12	VAR	34.20
CA60	10	8.0	24	VAR	187.2
	11	8.0	24	VAR	187.2
	12	8.0	24	VAR	187.2

Resumo do aço

CASO	DIAM	C TOTAL	RESO * 10 %
CA60	8.0	1716	52.8
CA50	5.0	231	39.2
RESO TOTAL			92.0

Vol. de concretos totais (C=20) = 0.83 m³
 Área de forma total = 16.08 m²



PROJETO DE INSTALAÇÃO E EXECUÇÃO DE INFRAESTRUTURA PARA ESPORTE, EDUCACIONAL, RECREATIVO E LAZER

ESTRUTURA CONCRETO
 RUA DR. PEDRO LUDOVICO TEIXEIRA COM AV. BRASÍLIA
 SETOR LAGO BRUNO - CORUMBÁ/MS

Proprietário: Prefeitura Municipal de Corumbá/MS
 Autor do Projeto: Eng. Civil Gabriel Costa Jácome
 CREA: 17967/AP-MS

Prancha: 18 / 27
 Conteúdo: Pilares Quadra Coberta

Revisão: R00
 Data: 27/02/2014
 Arquivo: ESTRUTURA_PARQUE_REV00.dwg
 Escala indicada: 1:100