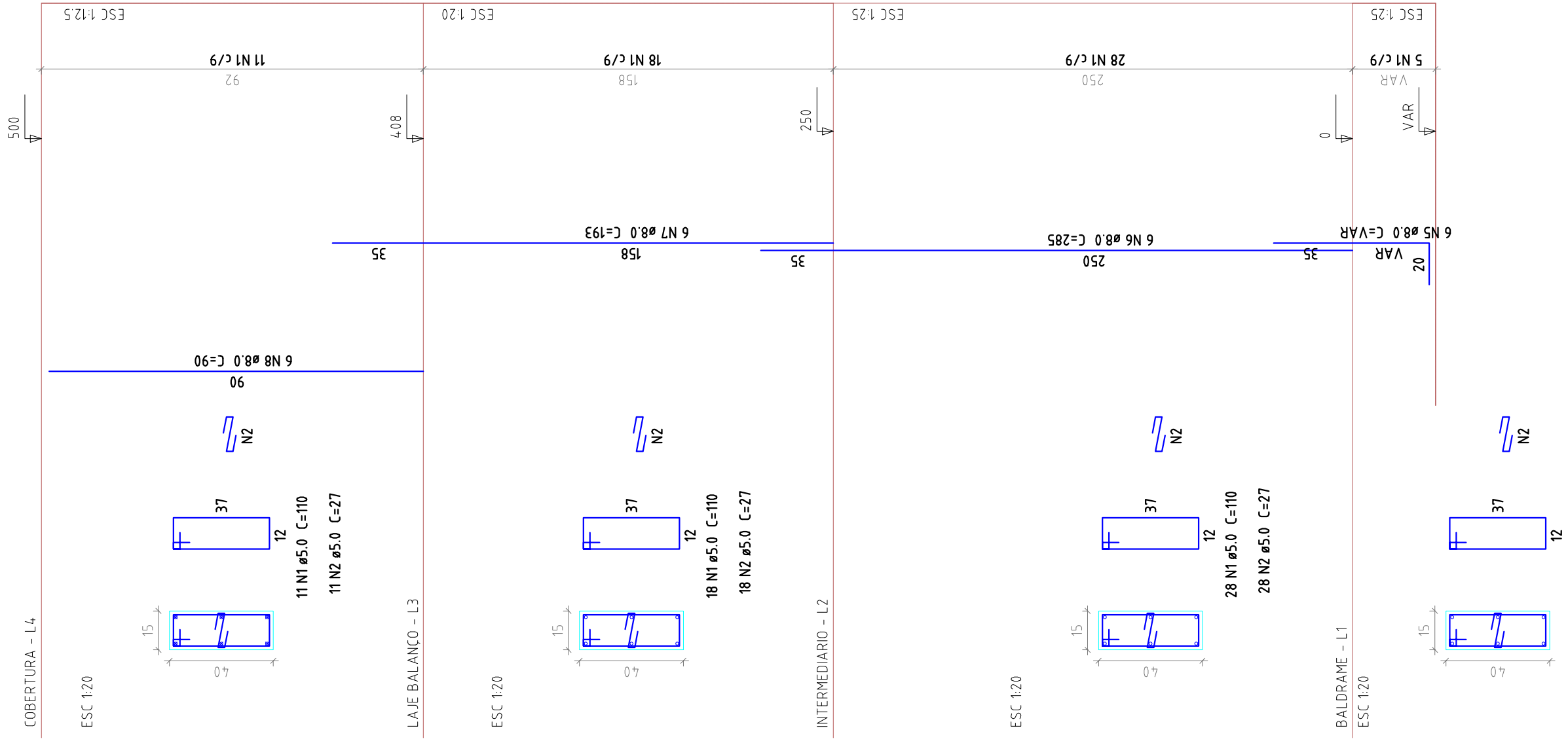
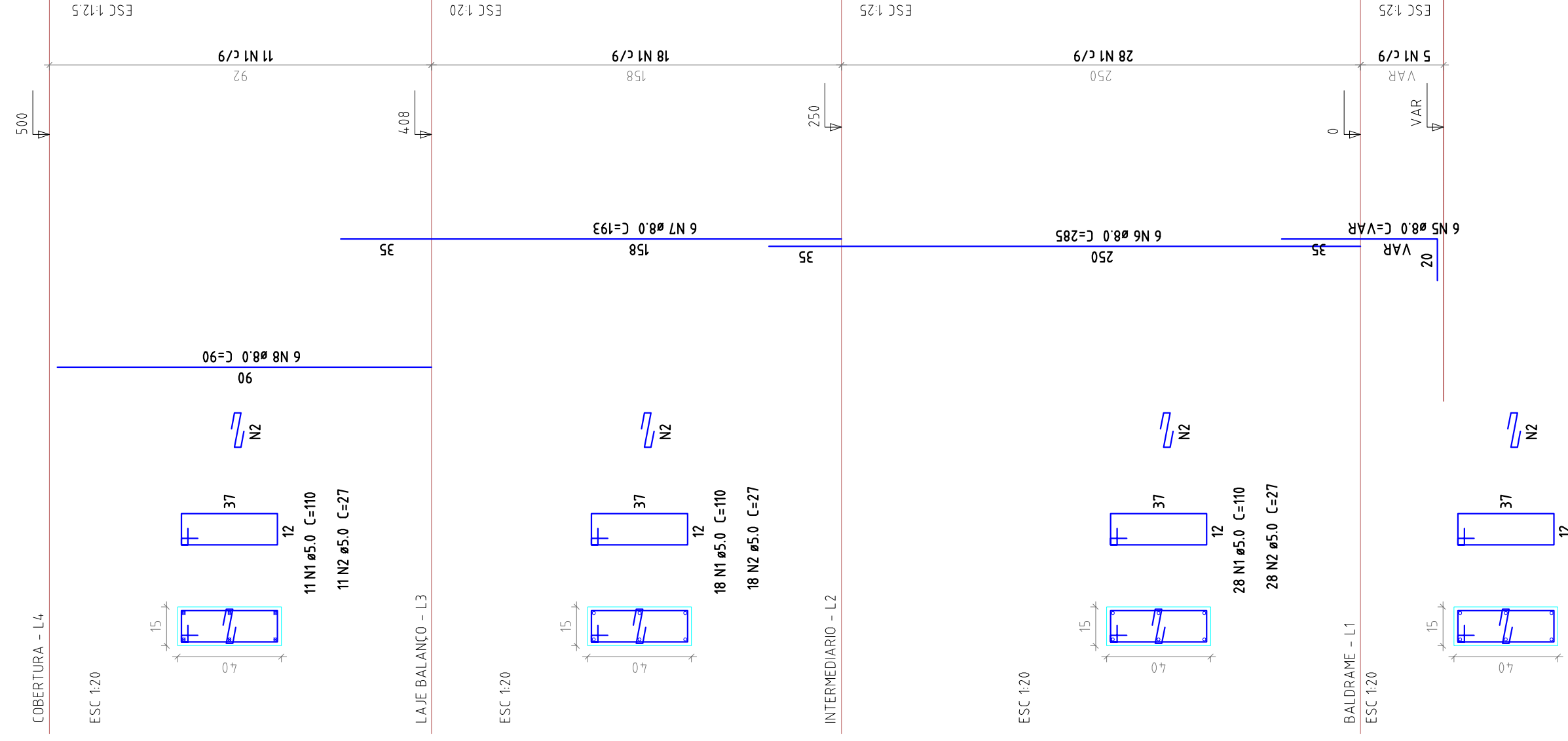


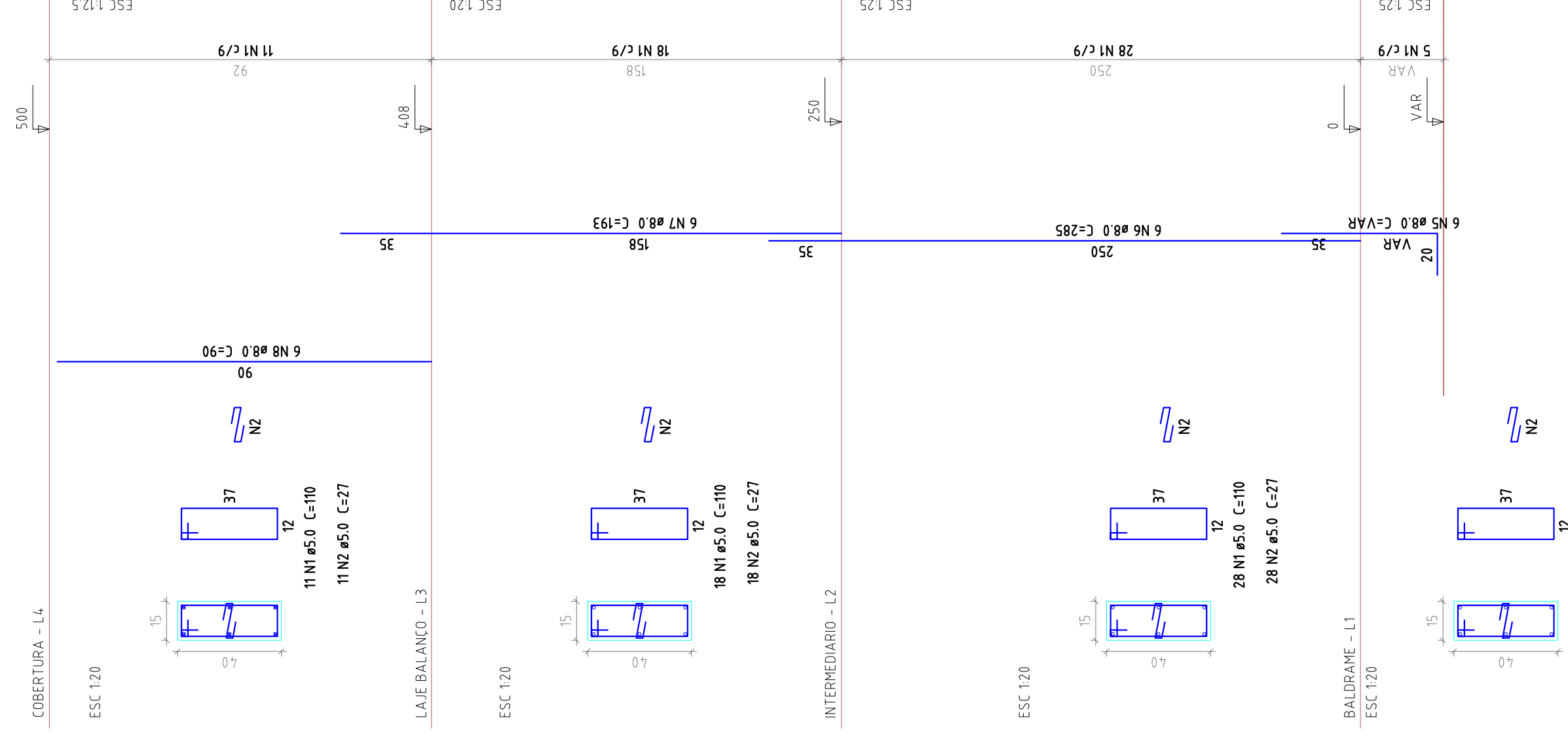
P55



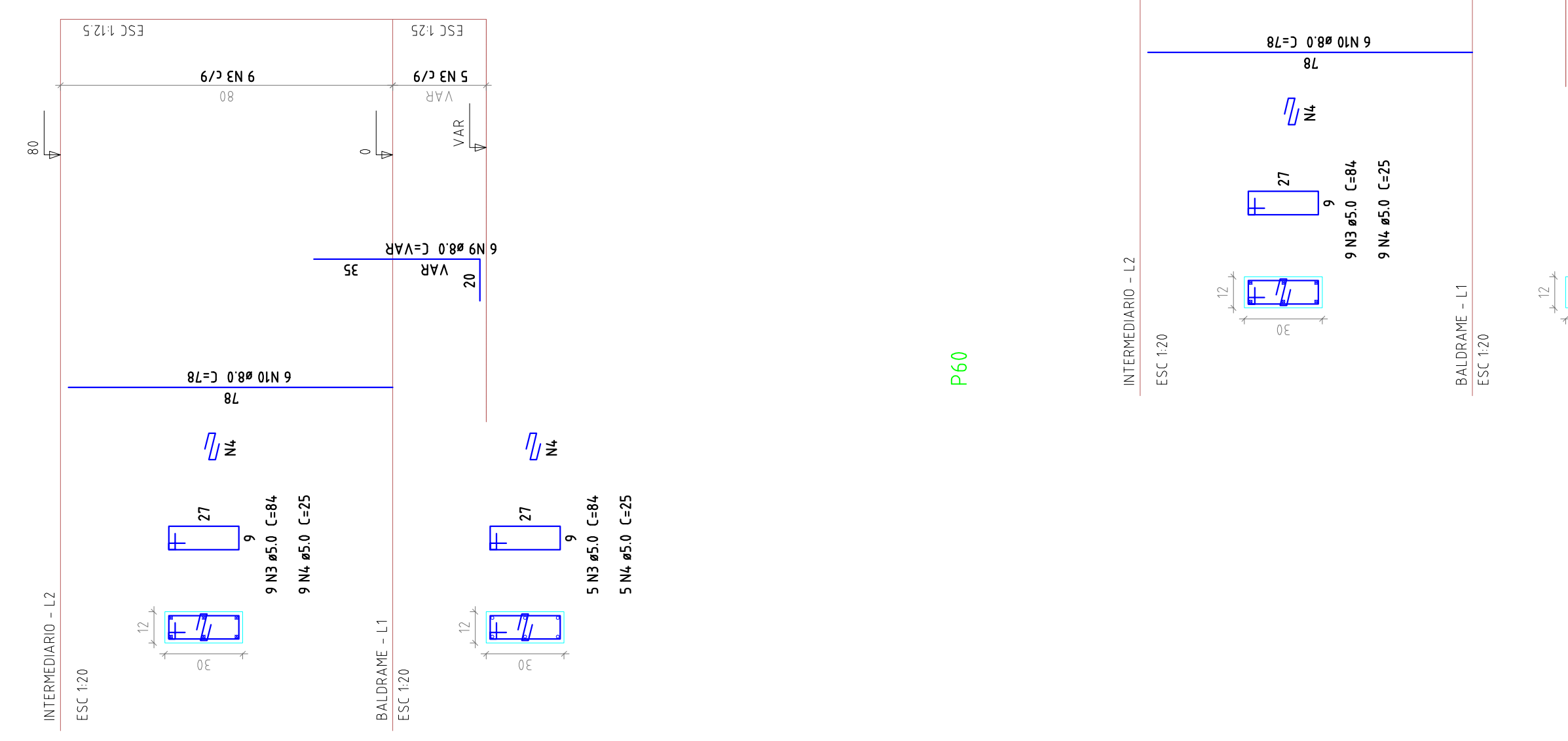
P58



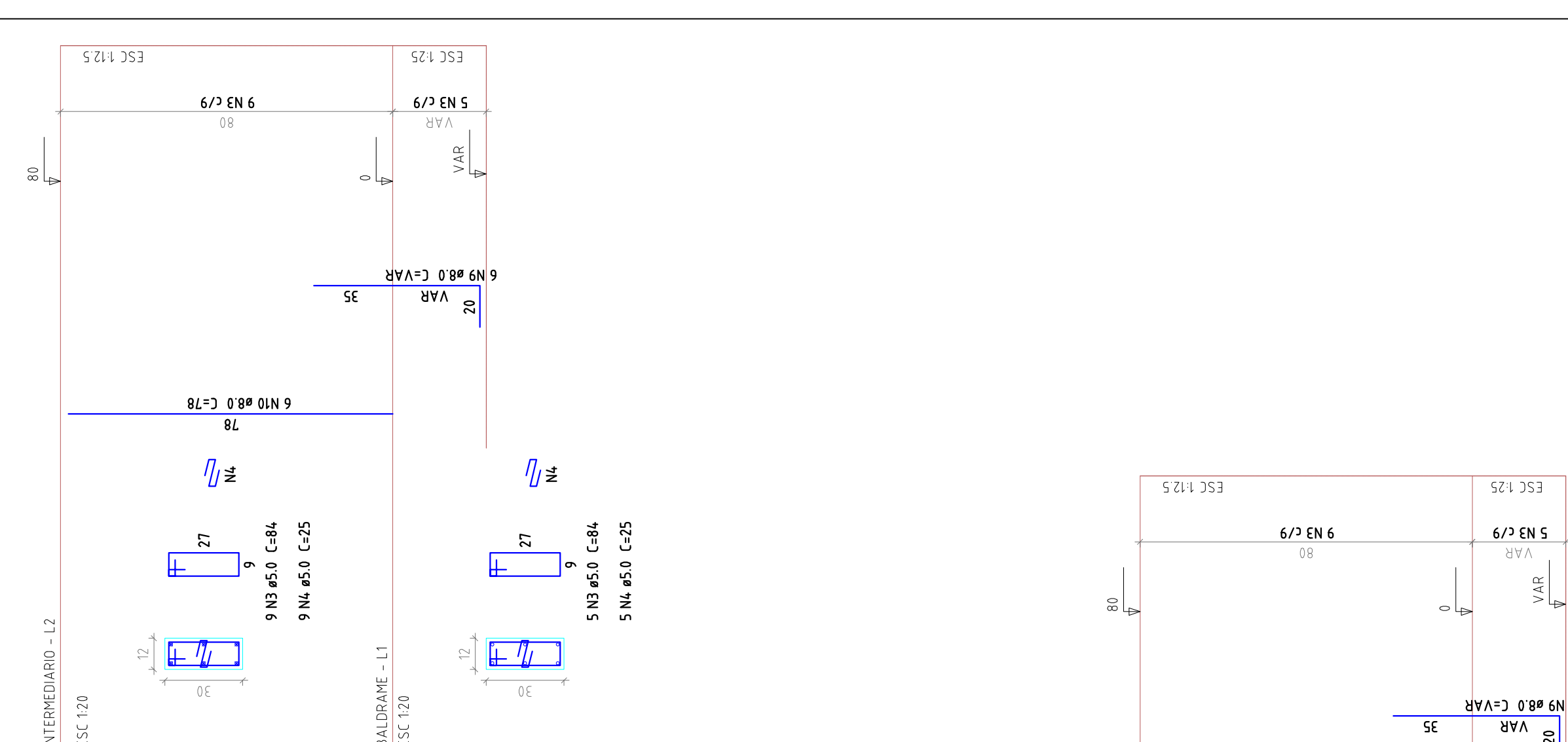
P59



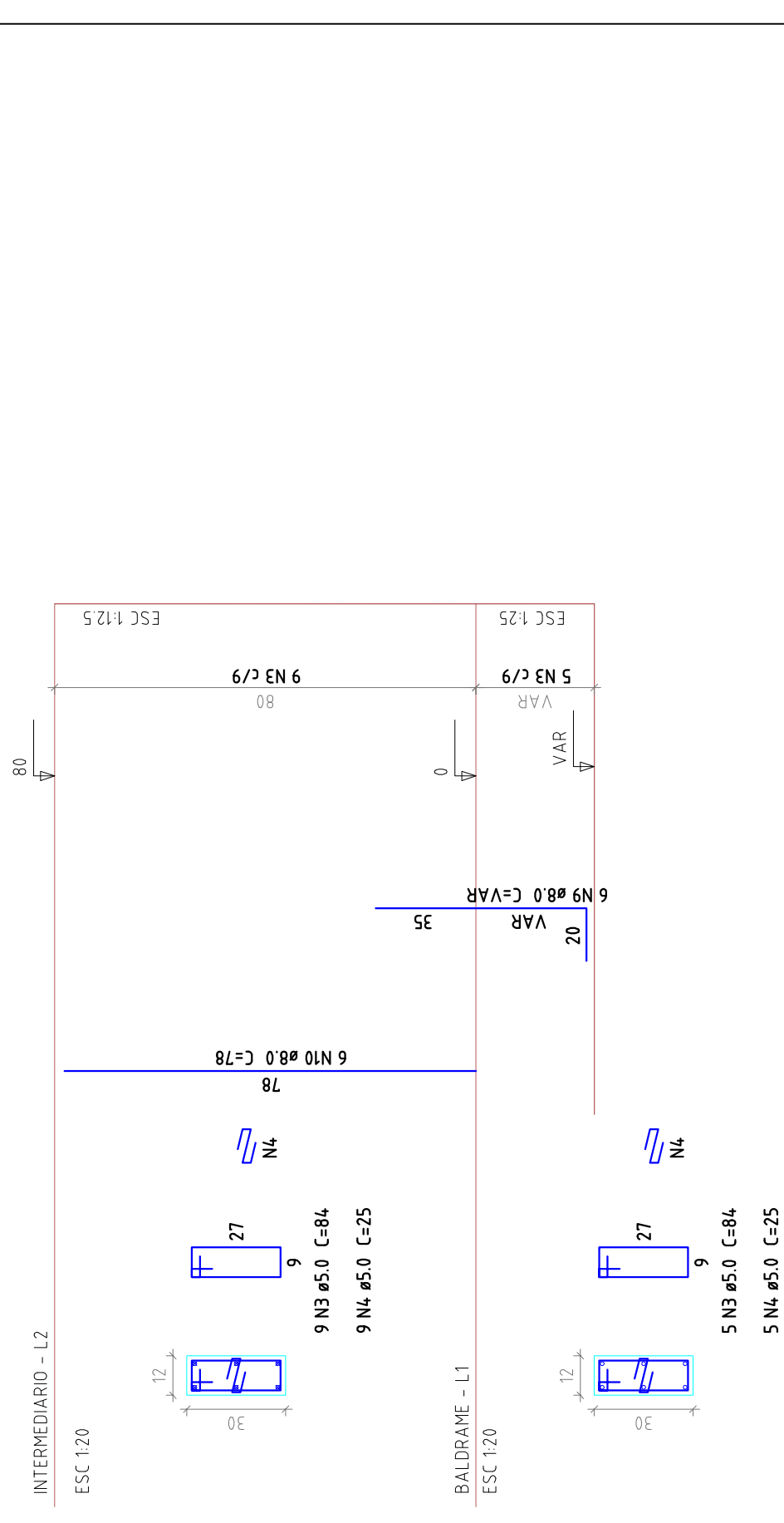
P56



P57



P60



Relação do aço

ACO	N	DIAM	Q	UNIT	C.TOTAL
CA60	1	5.0	866	110	20660
CA50	3	5.0	1027	84	3528
CA50	4	5.0	42	25	1050
CA50	5	8.0	18	VAR	VAR
CA50	6	8.0	18	285	5130
CA50	7	8.0	18	193	3474
CA50	8	8.0	18	90	1620
CA50	9	8.0	18	VAR	VAR
CA50	10	8.0	18	78	1104

RESUMO DO AÇO

ACO	DIAM	C.TOTAL	PESO - 10 %
CA60	8.0	150.7	65.4
CA50	5.0	300.6	51
PESO TOTAL			
CA50	65.4		
CA60	51		

Vol. de concreto total (C=20) = 111 m³

Area de forma total = 2077 m²



PROJETO DE IMPLANTAZÃO E MODERNIZAÇÃO DE INFRAESTRUTURA PARA ESPORTE, EDUCACIONAL, RECREATIVO E LAZER

ESTRUTURA CONCRETO

RUA DR. PEDRO LUDOVICO TEIXEIRA COM AV. BRASÍLIA  
SETOR LAGO BONITO - CORUMBÁ/MS

Proprietário: Prefeitura Municipal de Corumbá/MS

Autor do Projeto: Eng. Civil Gabriel Costa Jacone  
CREA: 17904/AF-GG

RT: \_\_\_\_\_

Conteúdo: Pilares, Quadra Coberta

Prancha: 21/27

Escala: \_\_\_\_\_

Data: \_\_\_\_\_

Arquivo: ESTRUTURA\_PARQUE\_REV00.dwg

Revisão: R00

27/02/14-Gabriel Jacone