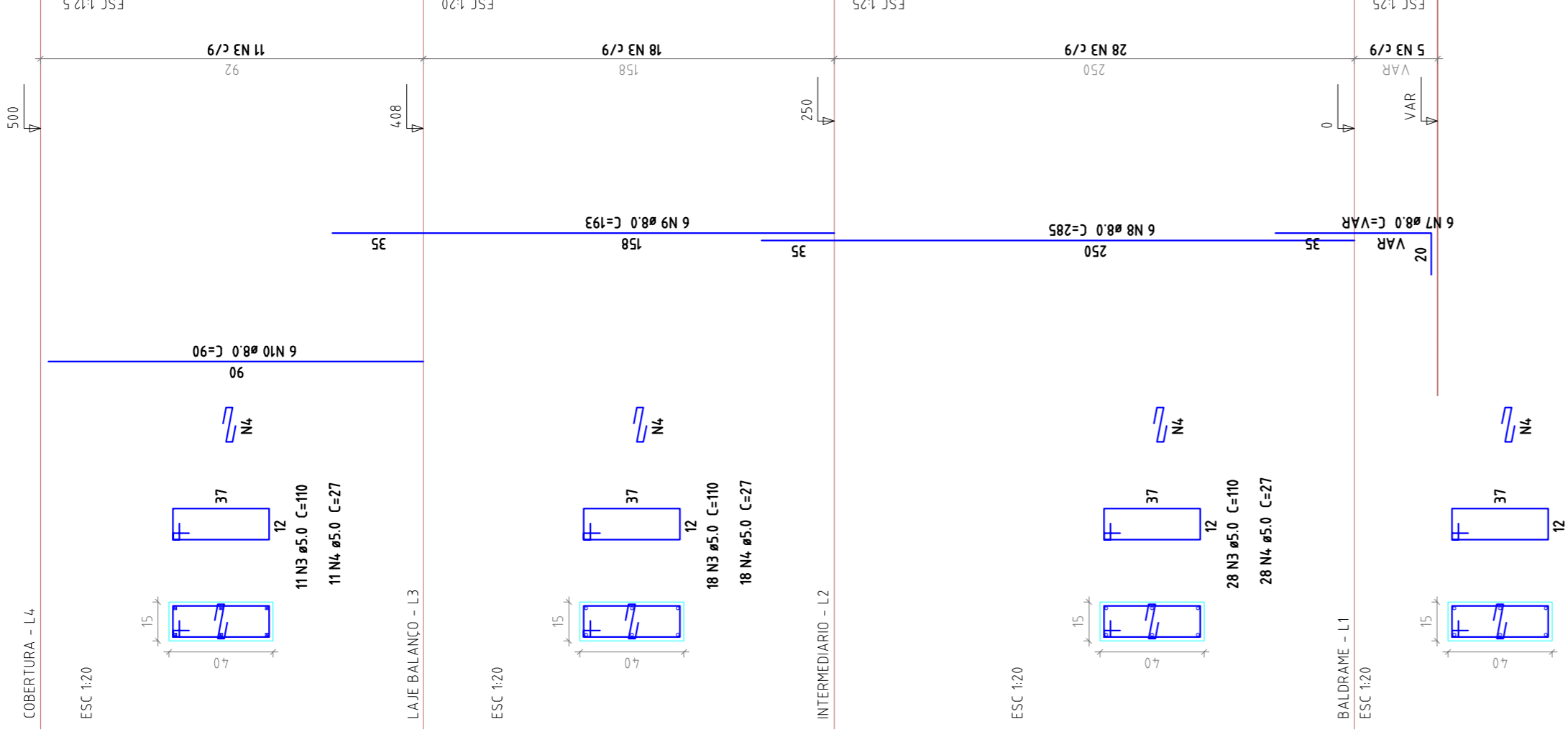
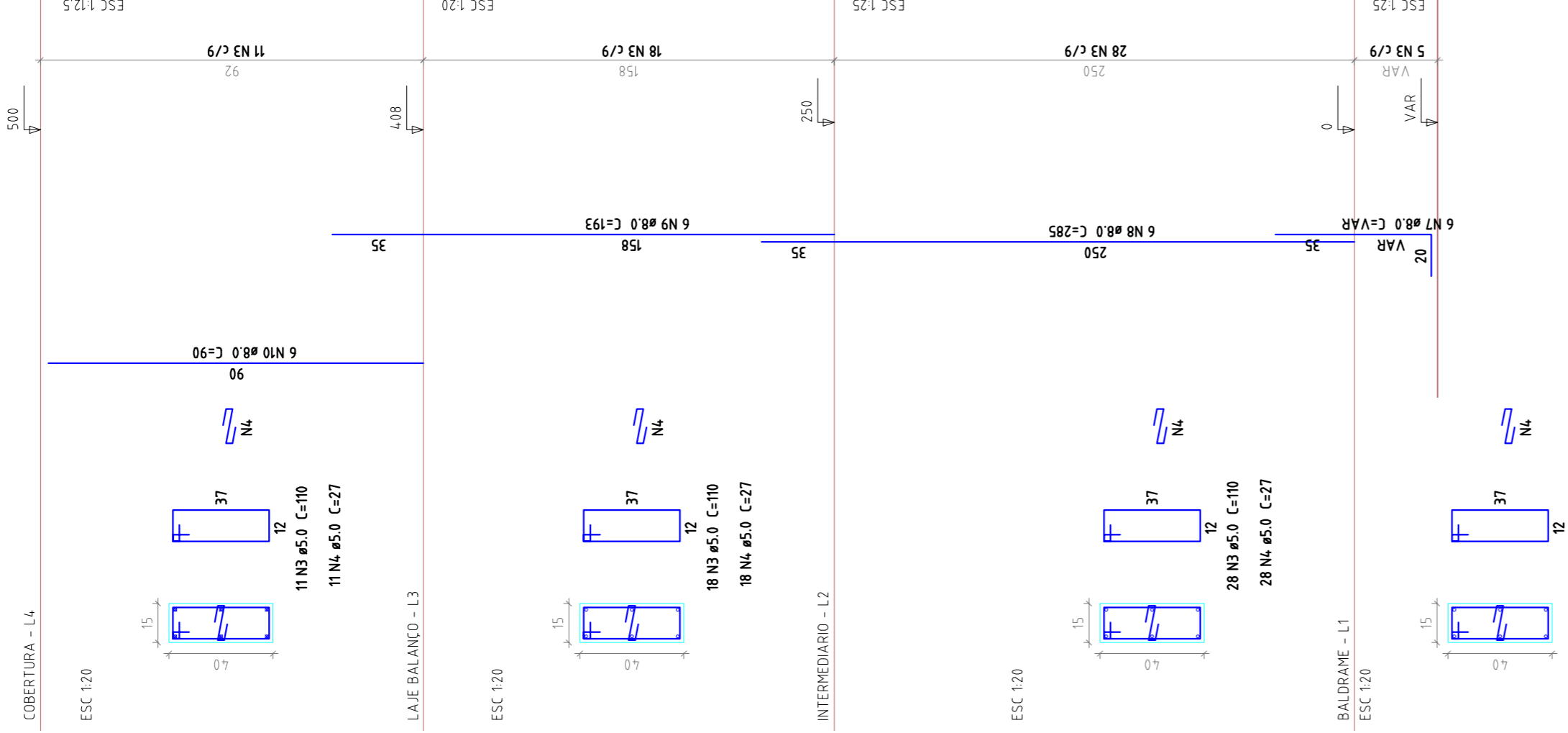


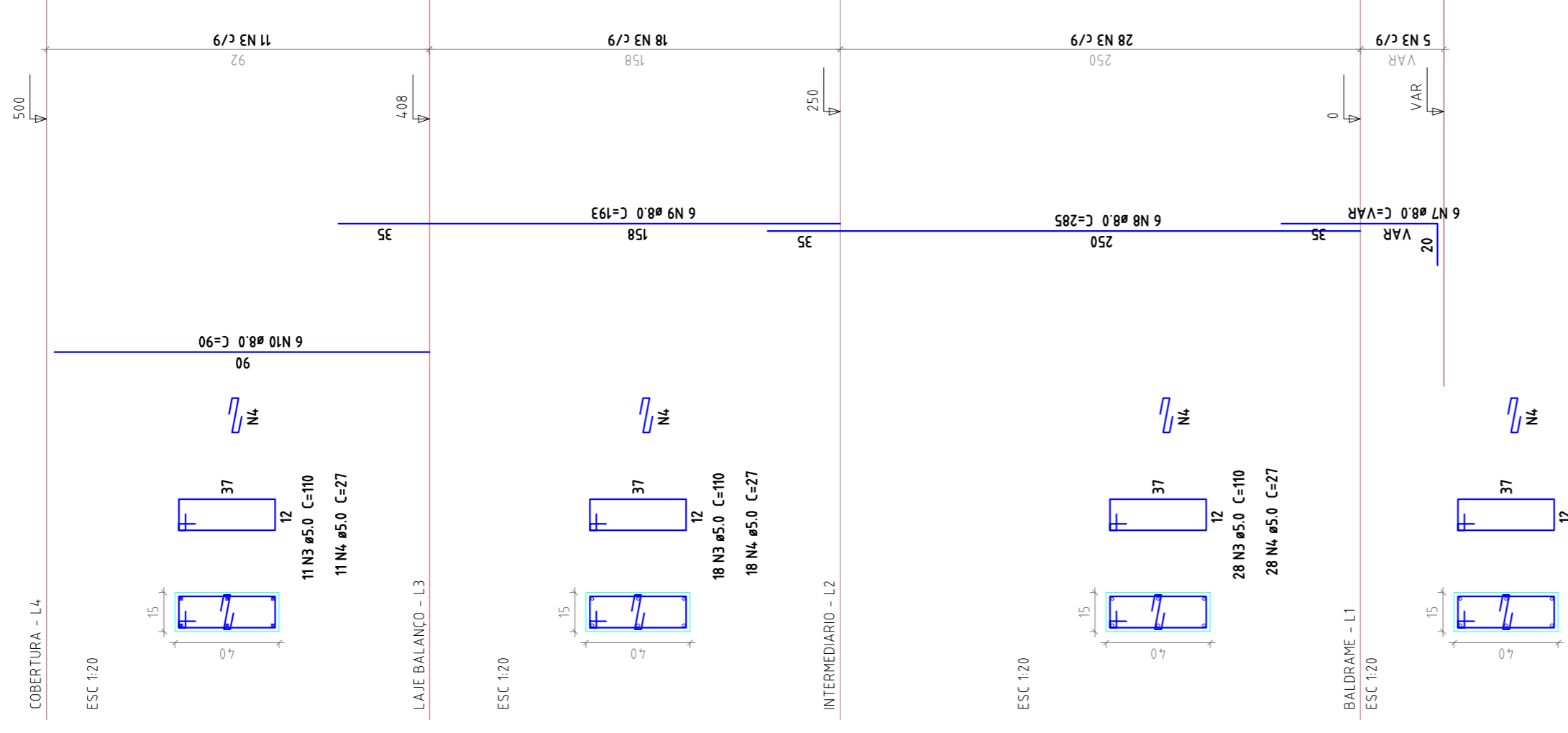
P62



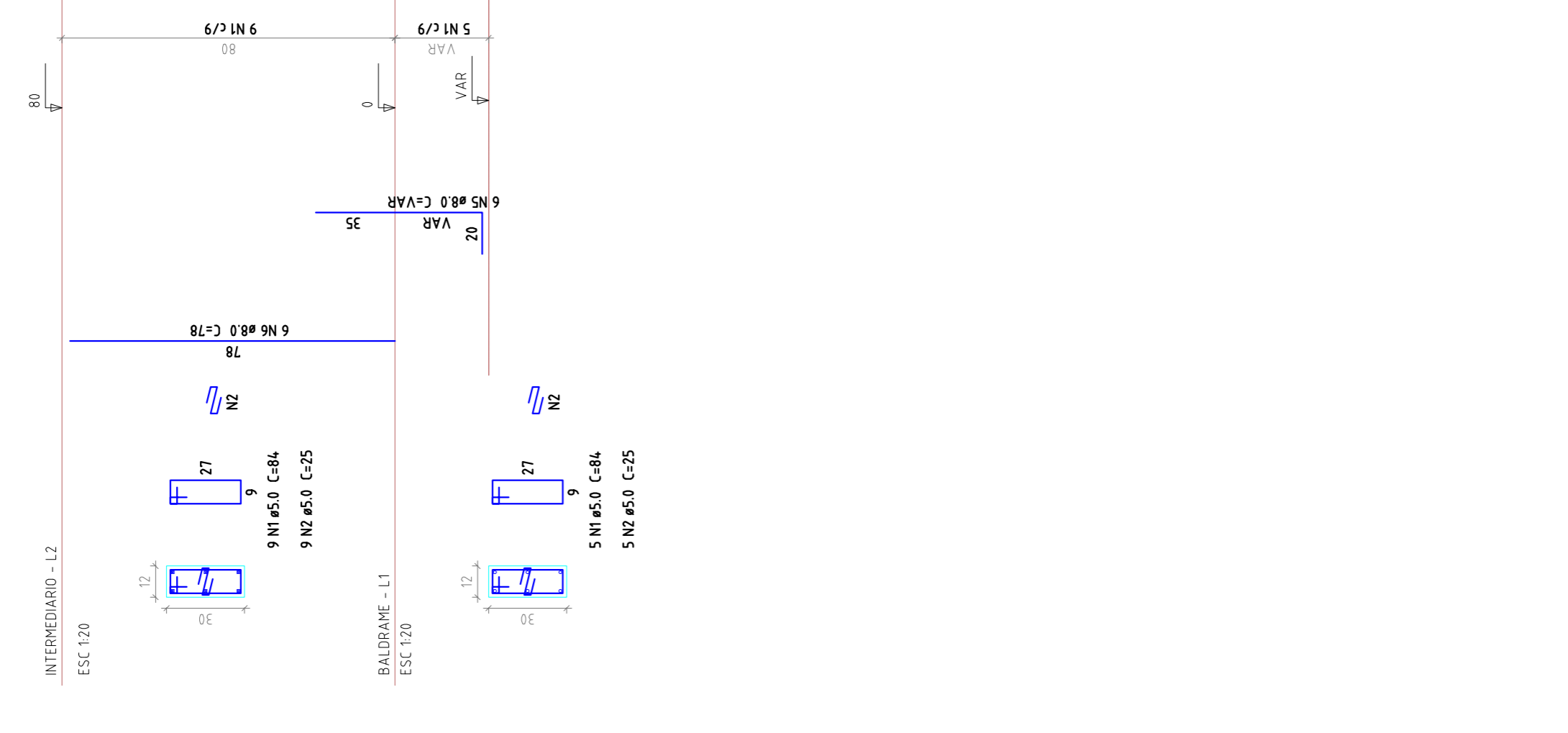
P63



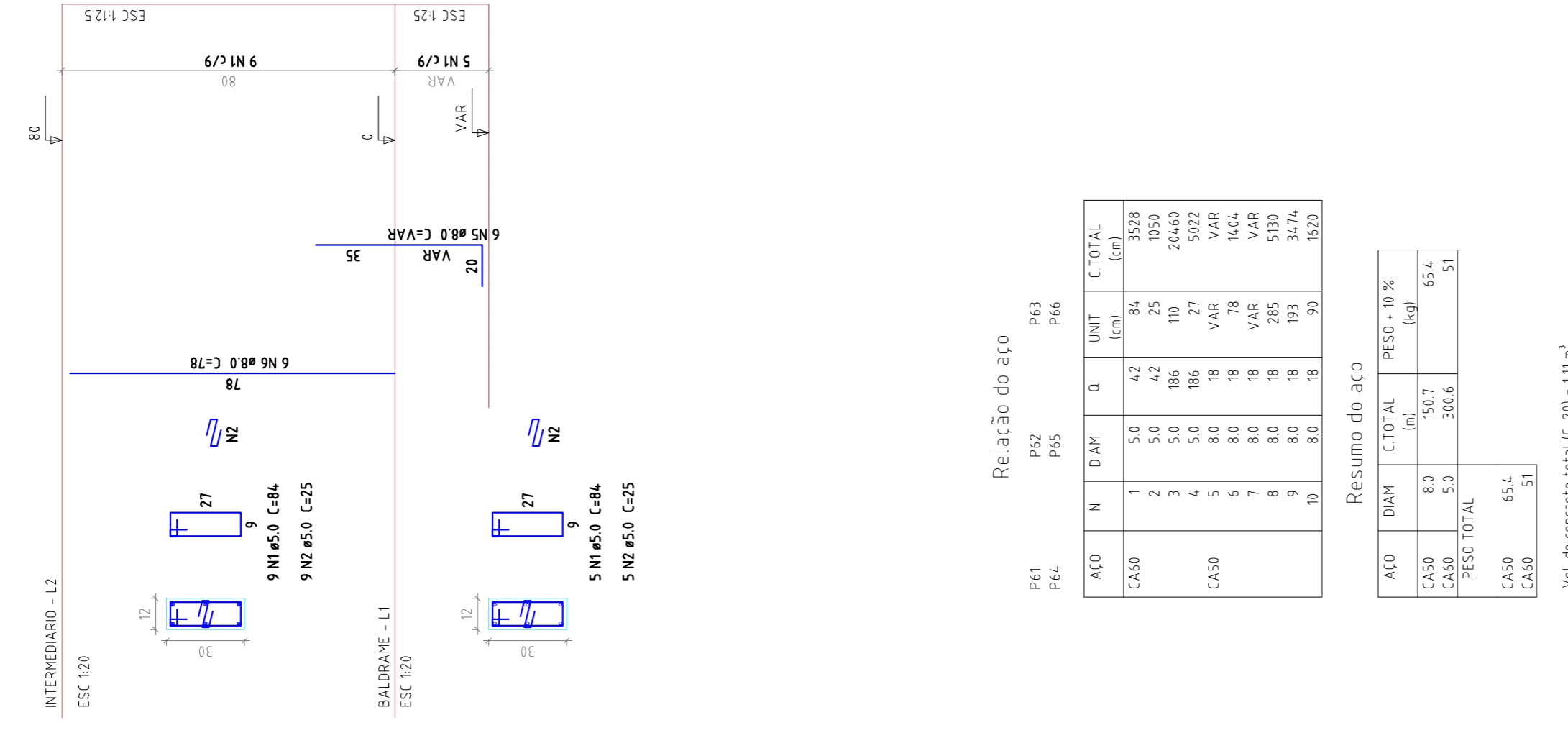
P66



P64



P65



Relação do aço

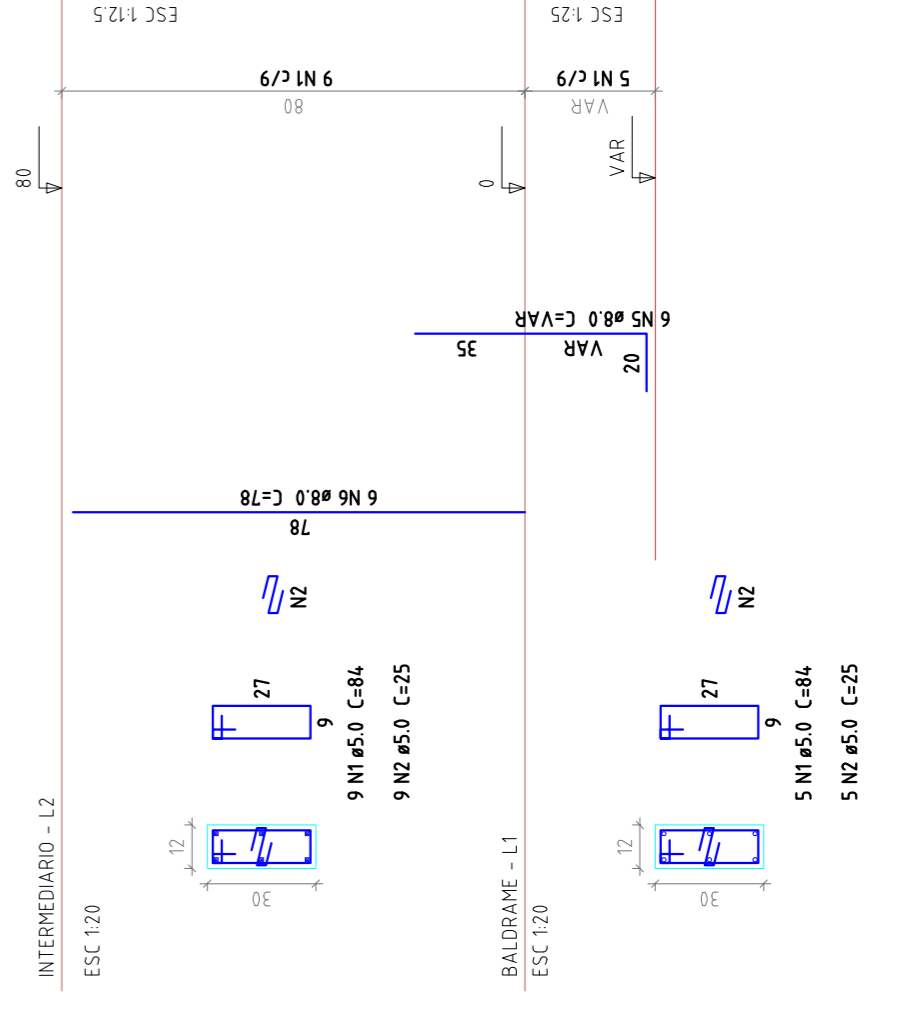
ACO	N	DIAM	Q	UNIT	C TOTAL
CA60	1	5.0	42	84	3528
	2	5.0	42	25	1050
	3	5.0	186	110	20460
	4	5.0	186	27	5022
	5	5.0	186	78	16644
	6	8.0	18	78	16644
	7	8.0	18	VAR	
	8	8.0	18	285	5130
	9	8.0	18	193	3474
	10	8.0	18	90	1820

Resumo do aço

ACO	DIAM	C TOTAL	PESO - 10%
CA50	8.0	1057	65.4
CA60	5.0	300.6	51
PESO TOTAL			
CA50	65.4		
CA60	51		

Vol. de concreto total (C-20) = 111 m³
 Área de forma total = 2897 m²

P61



PROJETO DE INSTALAÇÃO E MANUTENÇÃO DE INFRAESTRUTURA PARA ESPORTE, EDUCACIONAL, RECREATIVO E LAZER

ESTRUTURA CONCRETO
 RUA DR. PEDRO LUDOVICO TEIXEIRA COM AV. BRASÍLIA
 SETOR LAGO BONITO - CORUMBÁ/MS

Proprietário: Prefeitura Municipal de Corumbá/MS
 Autor do Projeto: Eng. Civil Gabriel Costa Jácome
 CREA: 17961/MS-00

RT:
 Condição:
 Pilares Quadra Coberta

Prancha: 22/27
 Escala indicada: Rev/2014
 Arquivo: ESTRUTURA_PARQUE_REV000.dwg
 Revisão: R00
 Data: 27/02/14-Gabriel Jácome