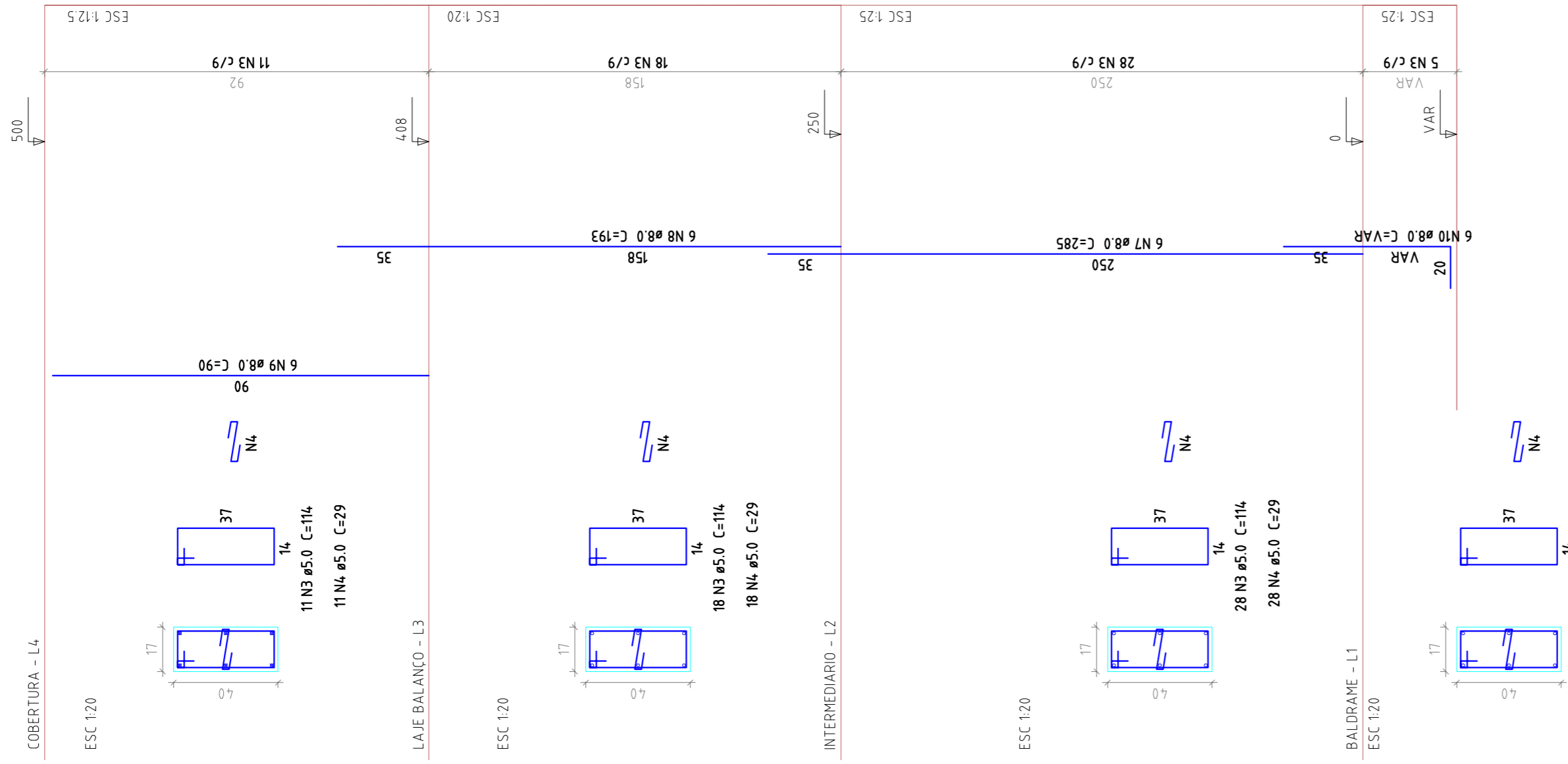
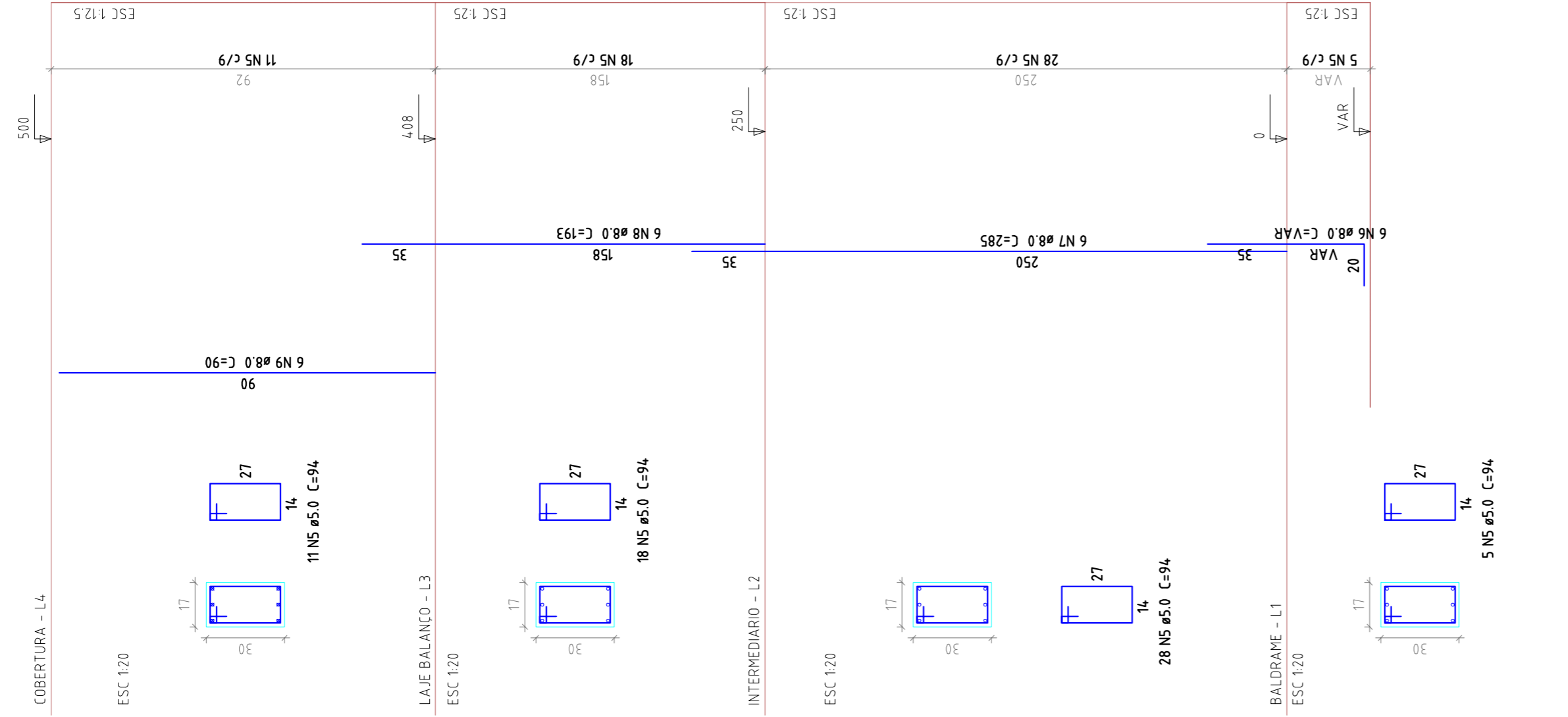


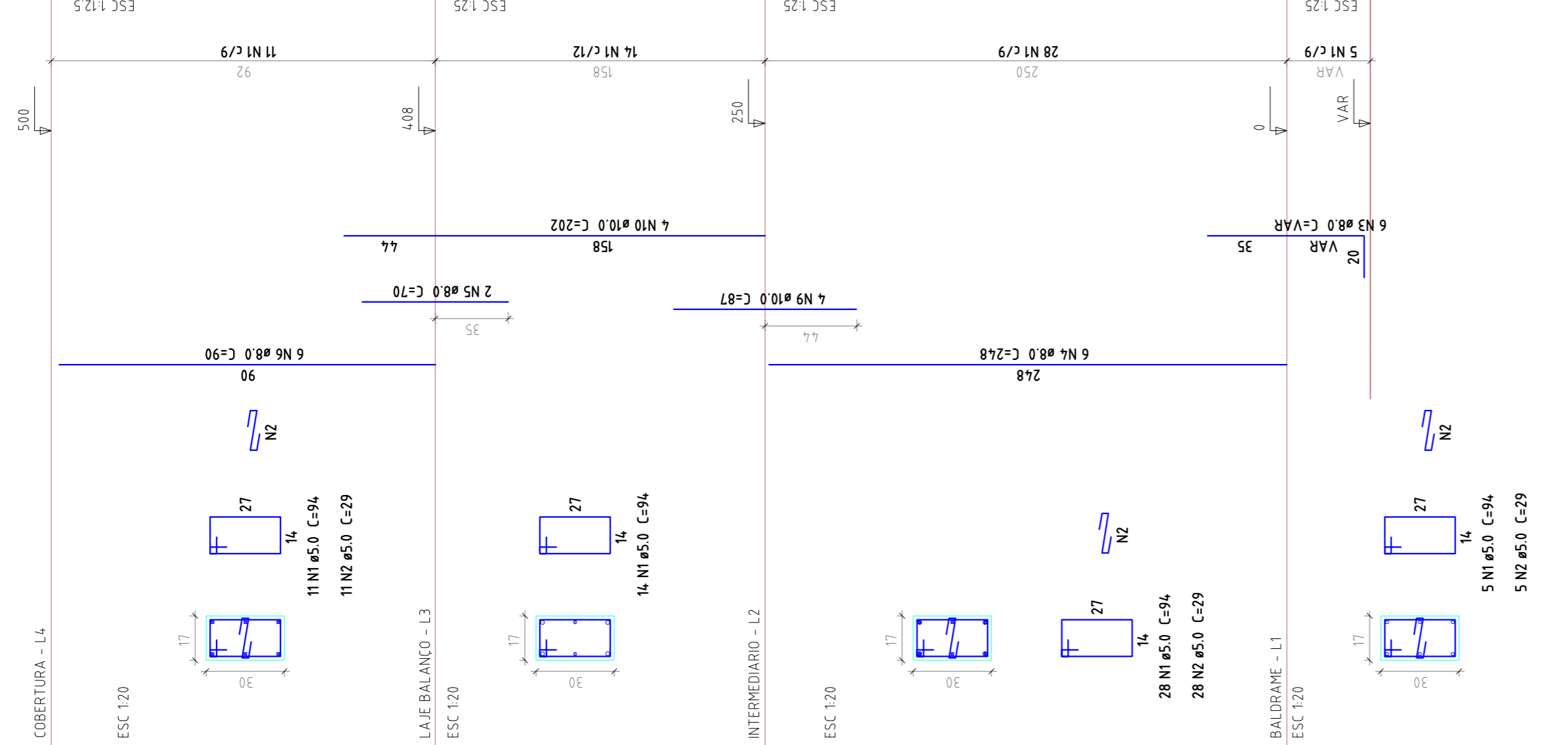
P71



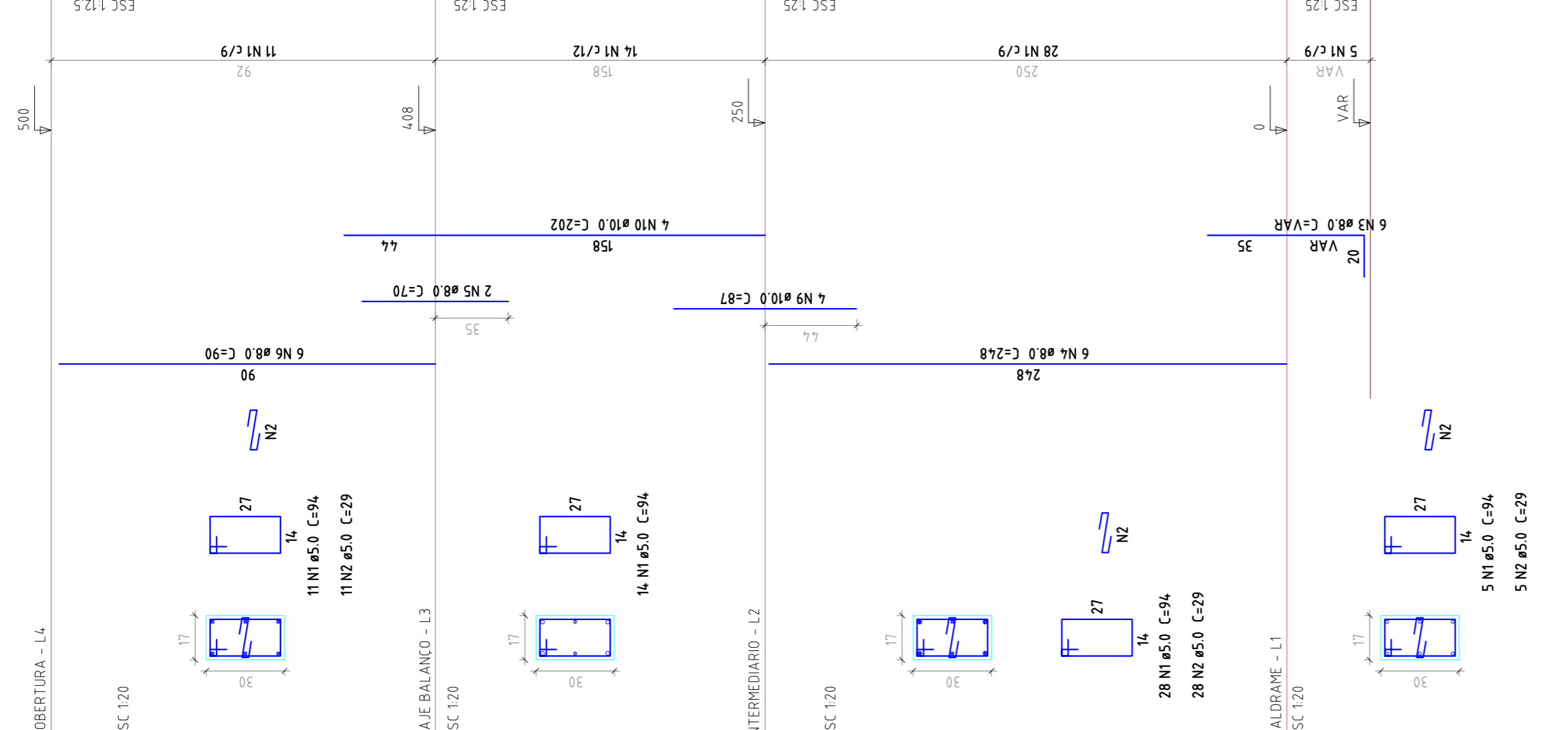
P72



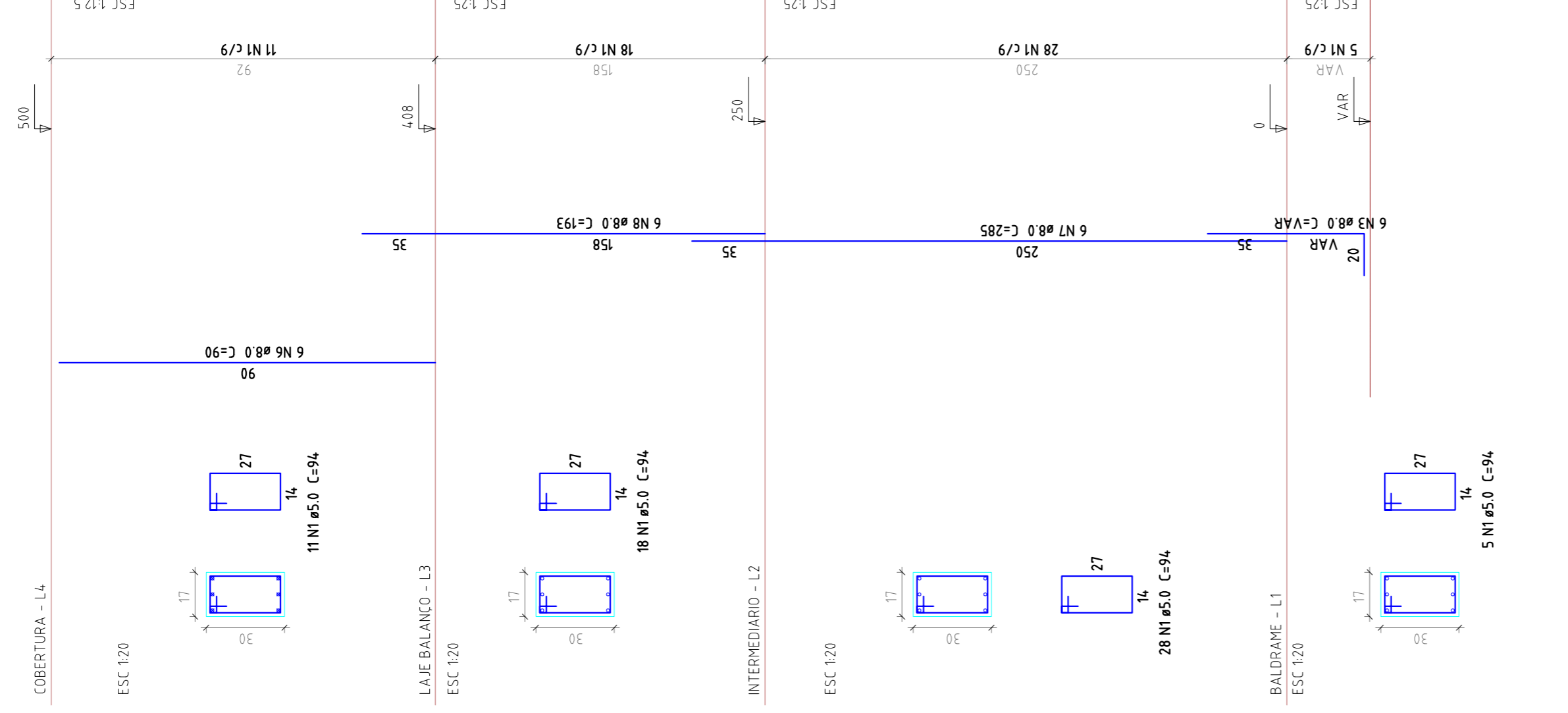
P73



P74



P75



Relação do aço

ACO	N	DIAM	Q	UNIT	C TOTAL
				(cm)	(cm)
CA60	1	5.0	178	94	16732
CA50	2	5.0	88	29	2552
CA50	3	8.0	18	VAR	2976
	4	8.0	4	70	280
	5	8.0	4	285	1710
	6	8.0	6	285	1710
	7	8.0	6	193	1158
	8	10.0	8	87	696
	9	10.0	8	202	1616
	10	10.0	8		

Resumo do aço

ACO	DIAM	C TOTAL	PESO - 10 %
		(cm)	(kg)
CA50	8.0	94.2	4.09
CA60	10.0	23.2	15.7
CA60	5.0	192.9	32.7
PESO TOTAL			
CA50	56.6		
CA60	32.7		

Vol. de concreto total (C-20) = 0.83 m³
 Área de forma total = 15.23 m²



PROJETO DE IMPLANTACÃO E MODERNIZAÇÃO DE INFRAESTRUTURA PARA ESPORTE, EDUCACIONAL, RECREATIVO E LAZER

ESTRUTURA CONCRETO

RUA DR. PEDRO LUDOVICO TEIXEIRA COM AV. BRASÍLIA
 SETOR LAGO BONITO - GUARABUÁ/GO

Proprietário: Prefeitura Municipal de Comombinho

Autor do Projeto: Eng. Civil Gabriel Costa Jacone
 CREA: 17904/AF-GO

RT:

Conteúdo:
Pilares Quadra Coberta

Prancha:
25/27

Escala Indicada: | Data: | Arquivo: | Revisão R00 |
 ESTRUTURA_PARQUE_REV00.dwg | 27/02/14-Gabriel Jacone