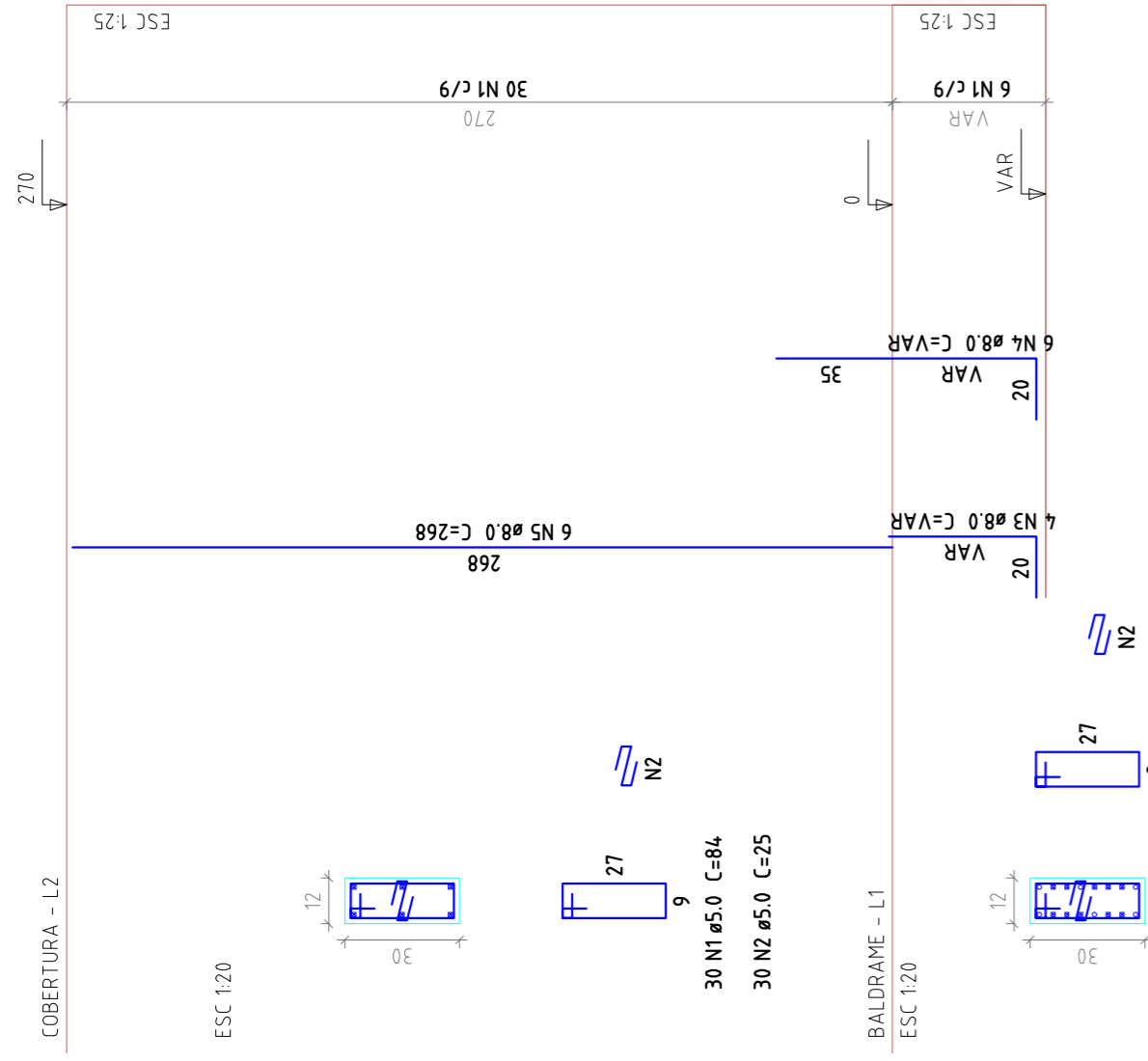
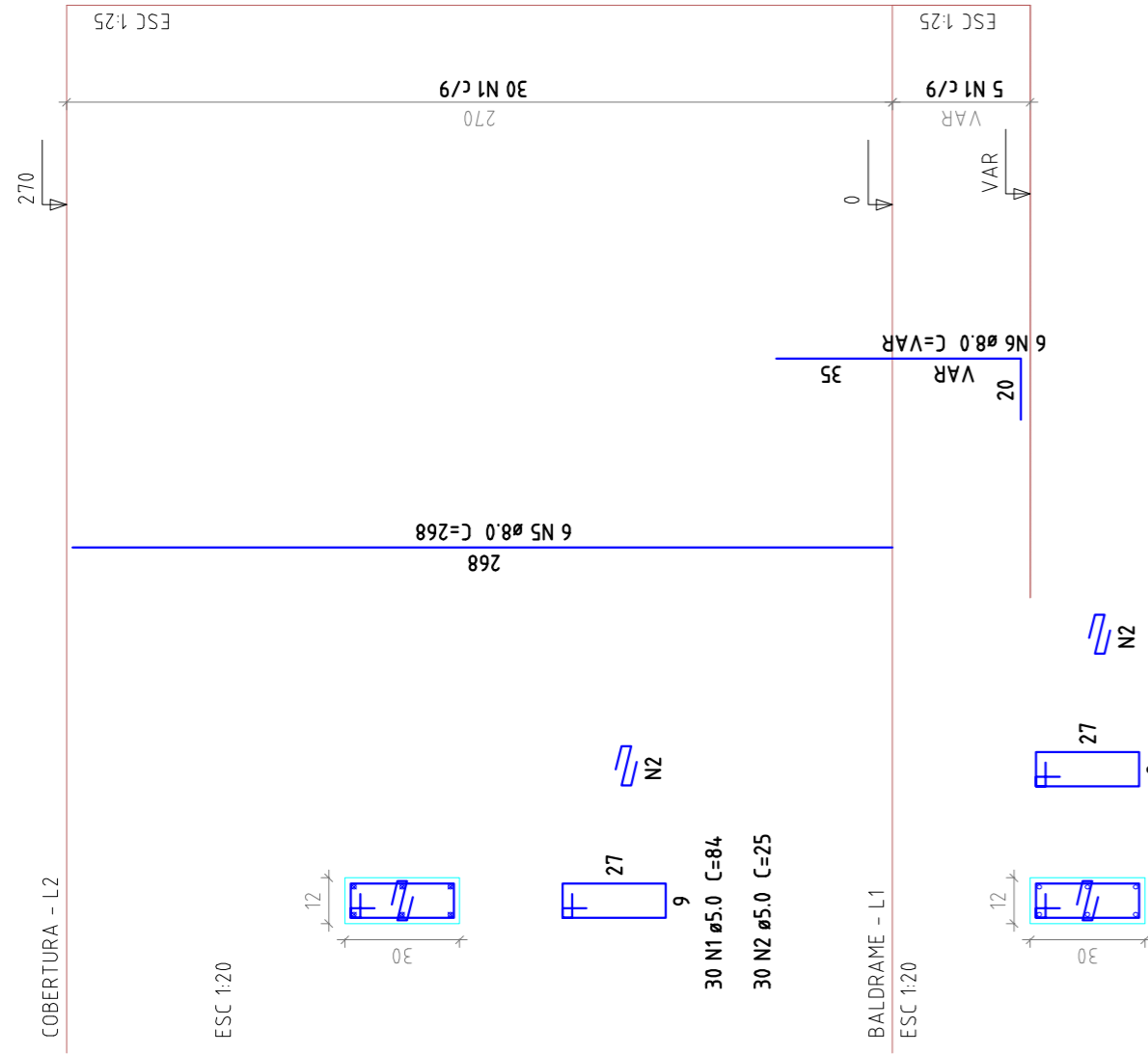


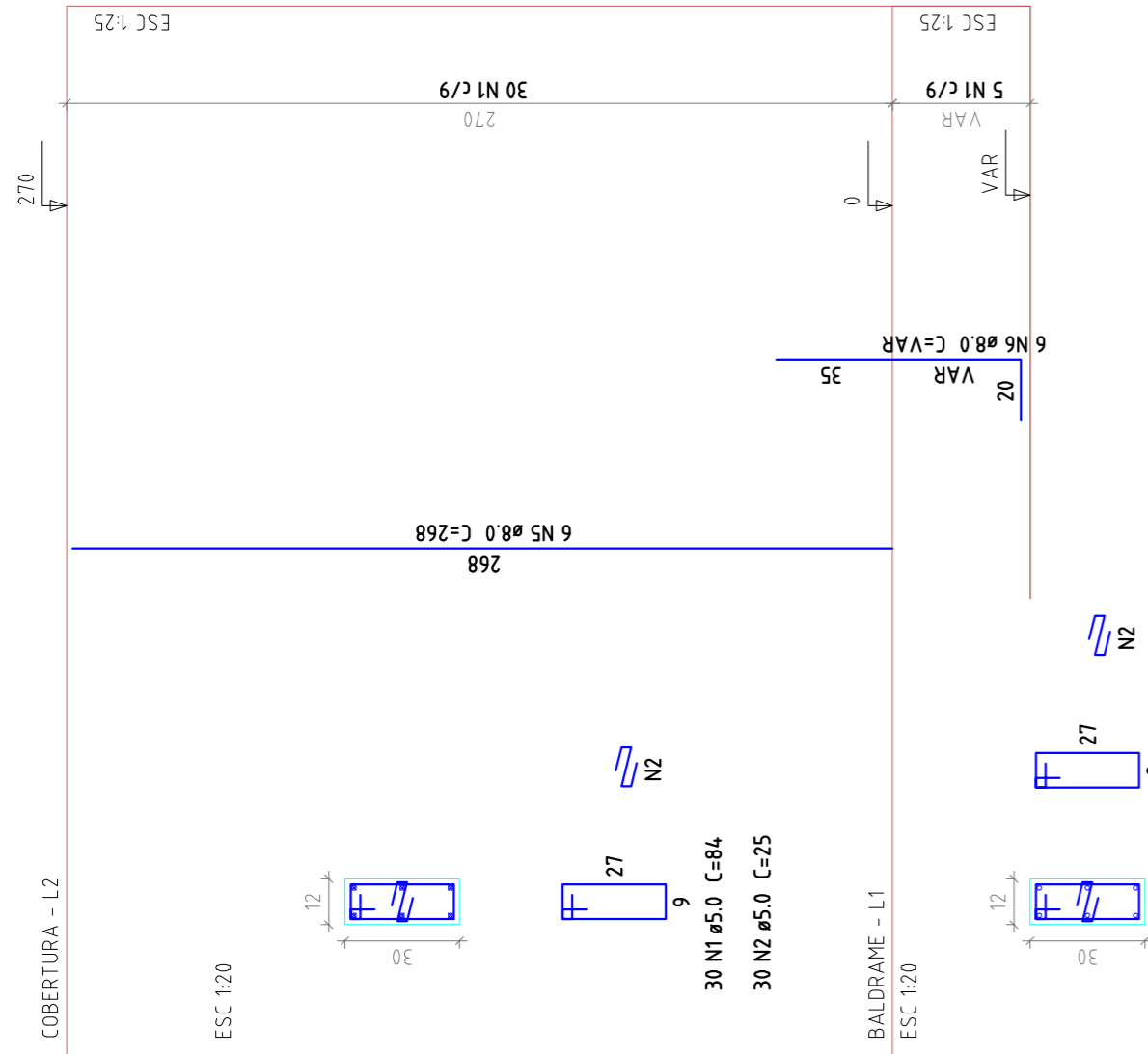
P1



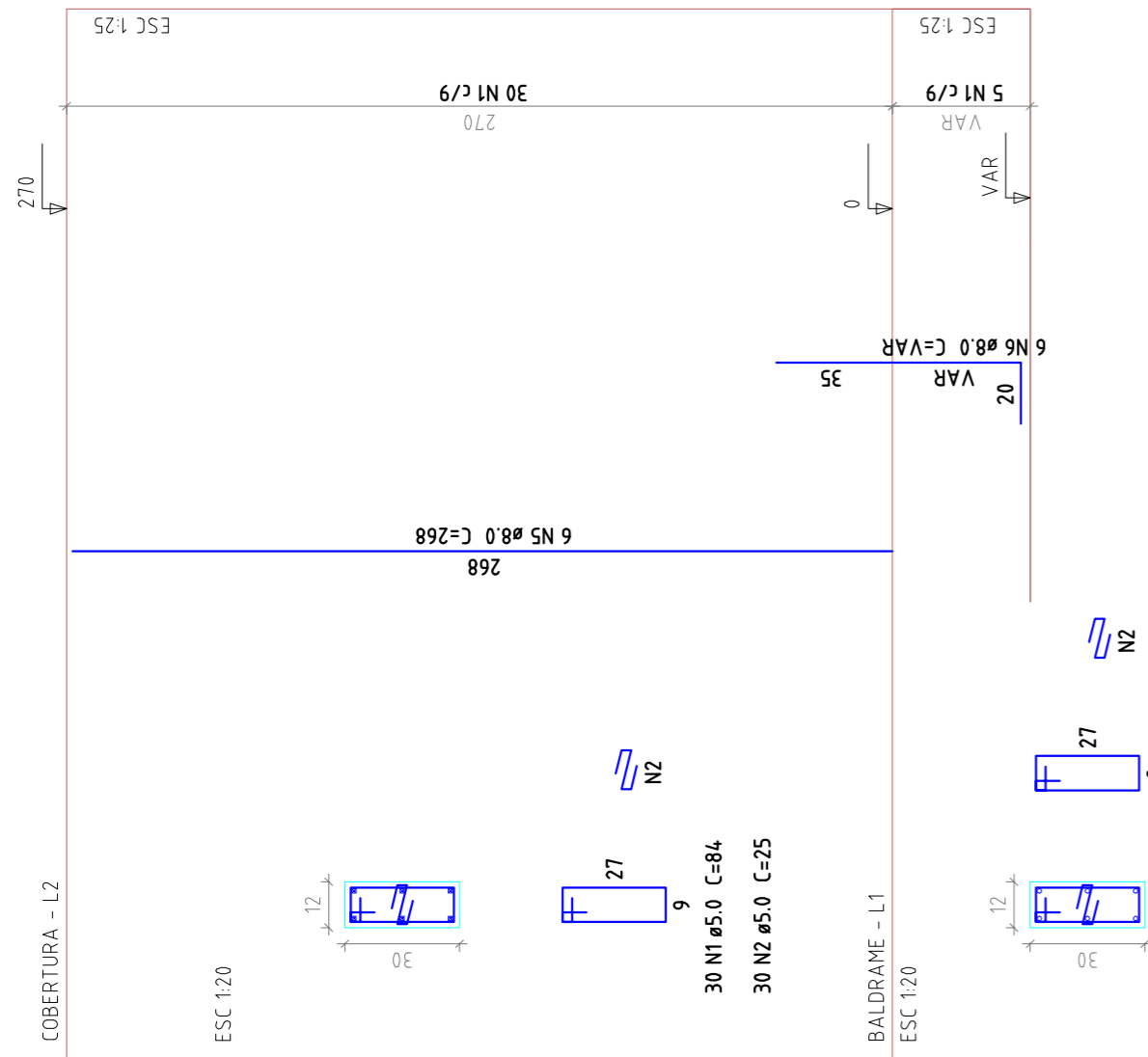
P2



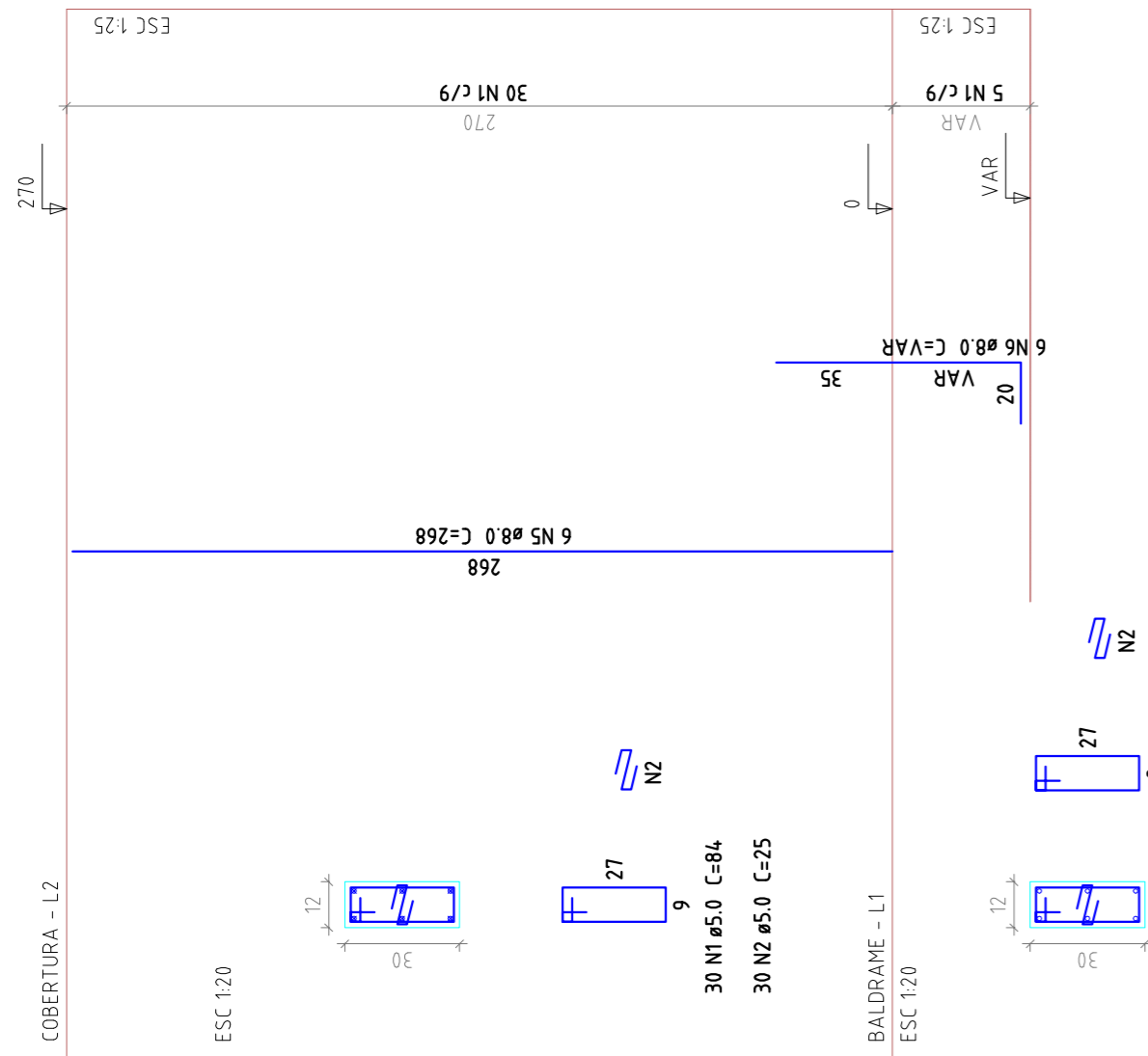
P3



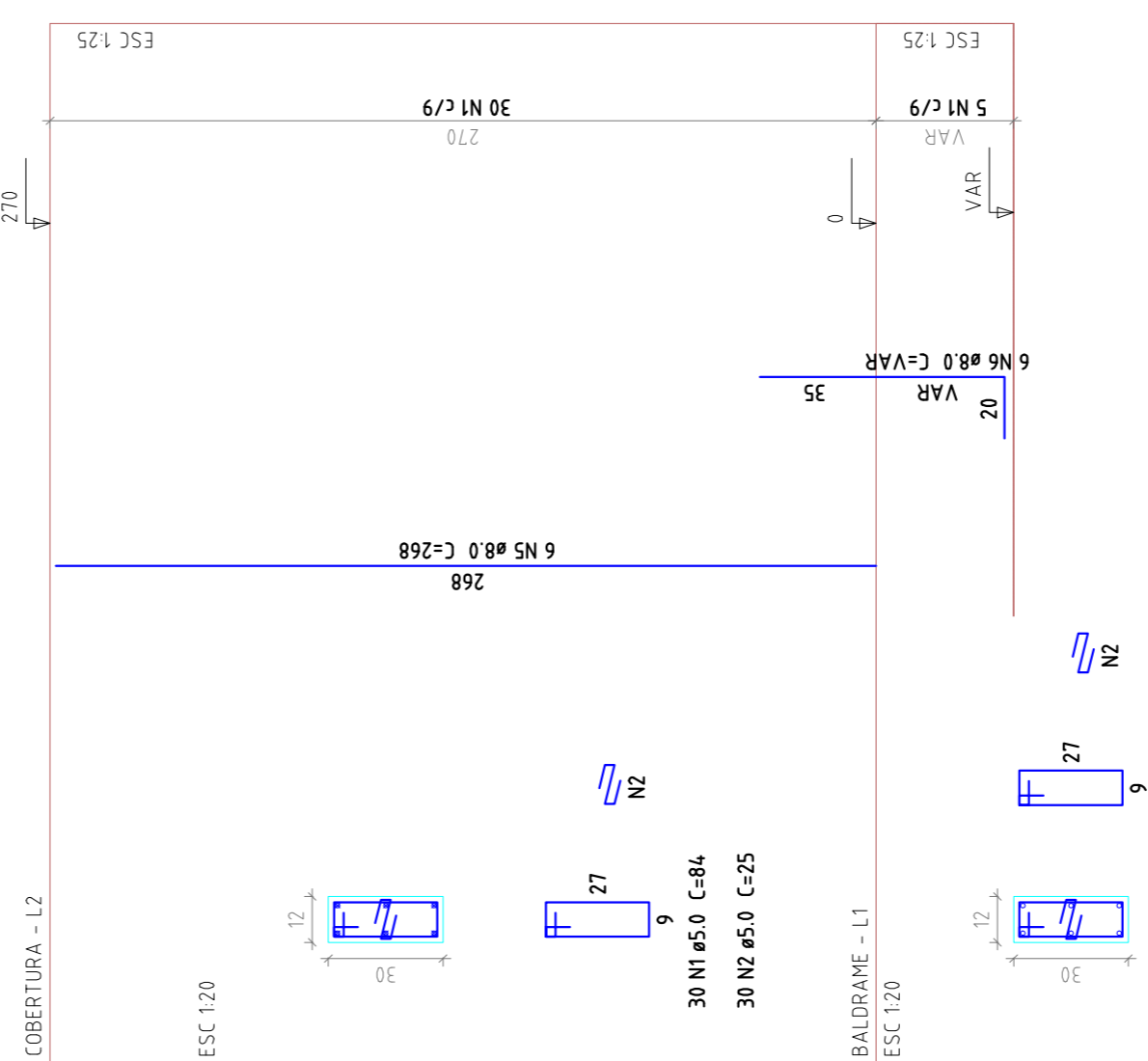
P4



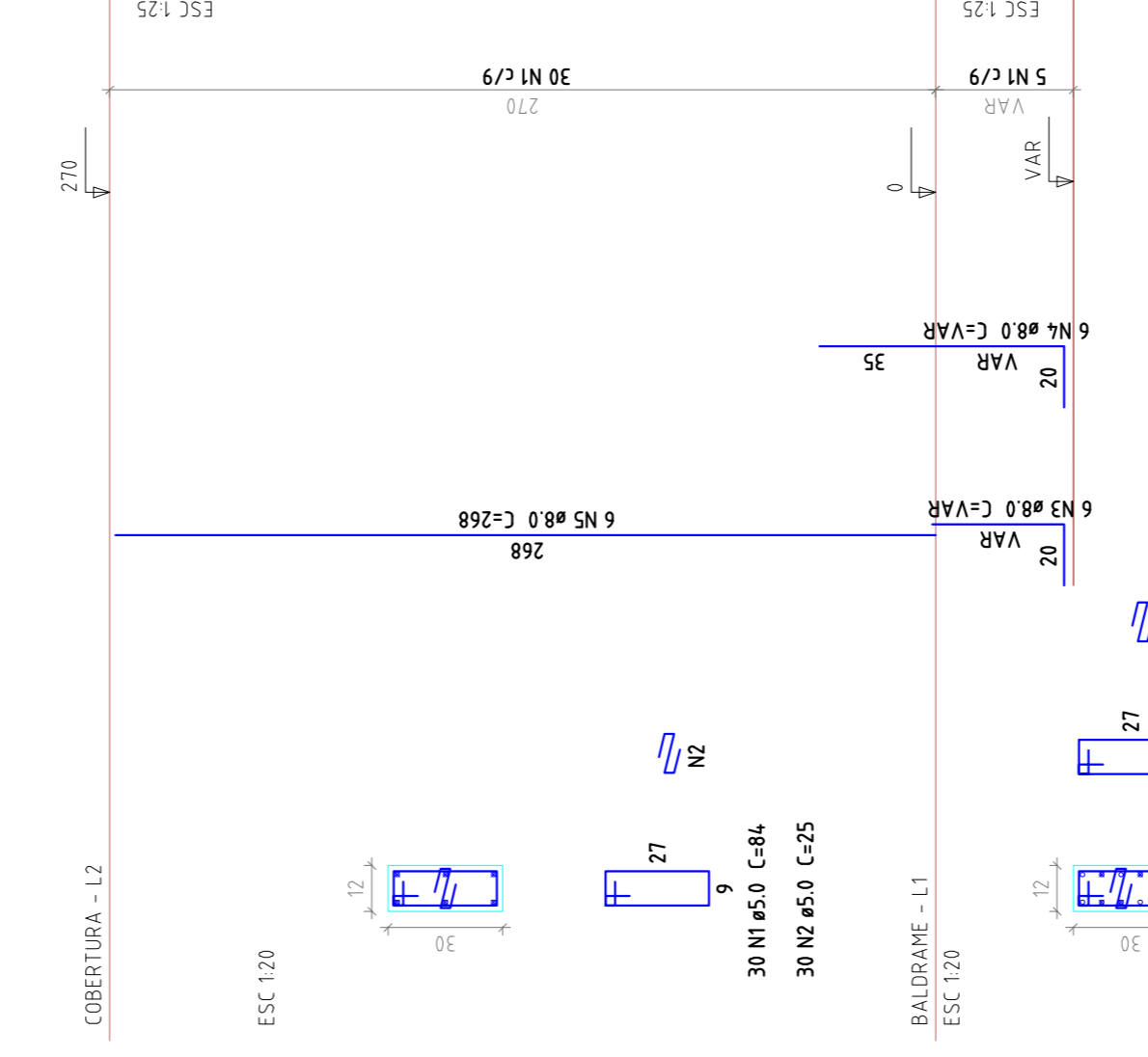
P5



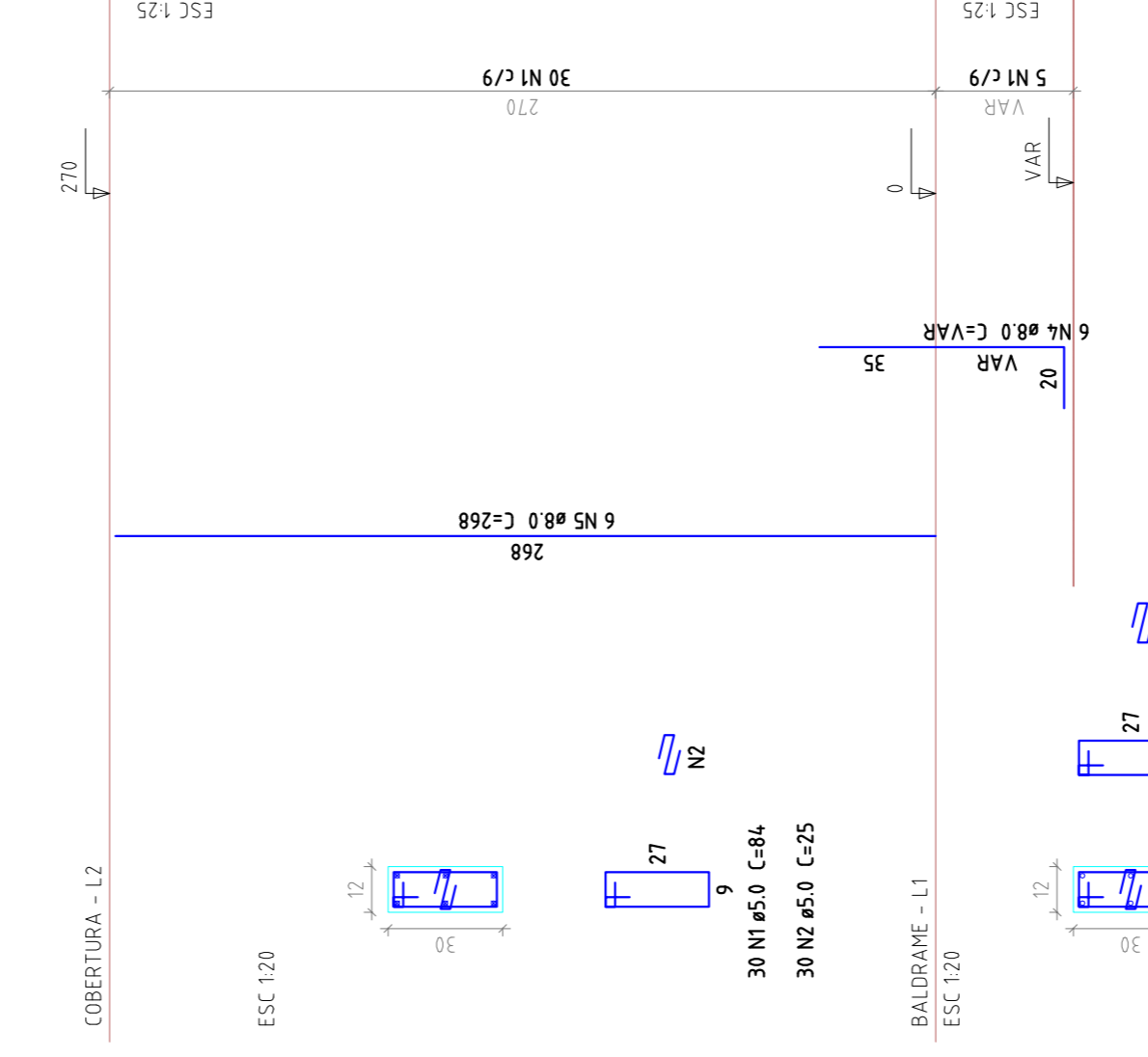
P6



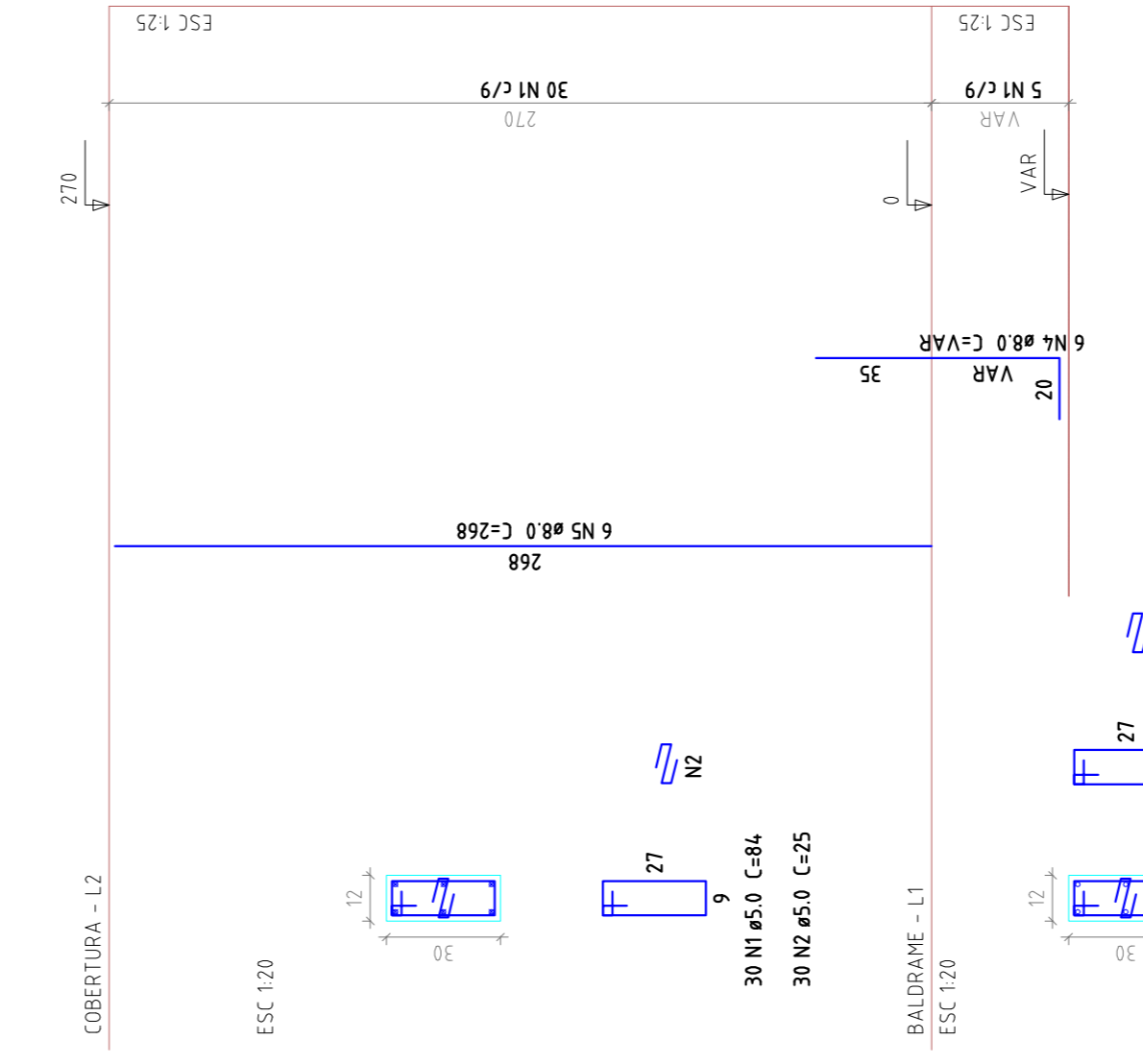
P7



P8



P9



Relação do aço

ACO	N	DIAM	Q	UNIT	C TOTAL
CA60	1	5.0	211	84	17724
CA50	2	5.0	211	25	5275
CA50	3	8.0	4	VAR	VAR
CA50	4	8.0	6	VAR	VAR
CA50	5	8.0	36	268	9648
CA50	6	8.0	30	VAR	VAR

Resumo do aço

ACO	DIAM	C TOTAL	PESO - 10 %
CA50	8.0	134.7	58.5
CA60	5.0	230	39
PESO TOTAL			
CA50	58.5		
CA60	39		

Vol. de concreto total (C=20) = 0.68 m<sup>3</sup>  
 Área de forma total = 15.92 m<sup>2</sup>

Relação do aço

ACO	N	DIAM	Q	UNIT	C TOTAL
CA60	1	5.0	185	84	15540
CA50	2	0	185	25	4625
CA50	3	8.0	18	VAR	VAR
CA50	4	8.0	18	VAR	VAR
CA50	5	8.0	18	268	4824

Resumo do aço

ACO	DIAM	C TOTAL	PESO - 10 %
CA50	8.0	69.6	30.2
CA60	5.0	116.5	19.4
PESO TOTAL			
CA50	30.2		
CA60	19.4		

Vol. de concreto total (C=20) = 0.34 m<sup>3</sup>  
 Área de forma total = 15.4 m<sup>2</sup>



PROJETO DE IMPLANTACÃO E MODERNIZAÇÃO DE INFRAESTRUTURA PARA ESPORTE, EDUCACIONAL, RECREATIVO E LAZER

ESTRUTURA CONCRETO

RUA DR PEDRO LUDOVICO TEIXEIRA COM AV BRASÍLIA SETOR LAGO BONITO - CORUMBABA/GO

Proprietário: Prefeitura Municipal de Corumbá

Altor do Projeto: Eng. Civil Gabriel Costa Jacone  
 CREA: 17904/AF-GO

Prancha: 02/03  
 Conteúdo: Pilares Quiosque de Alimentação

Escala: Indecida  
 Data: Fev / 2014  
 Arquivo: ESTRUTURA\_PARQUE\_REV00.dwg  
 Revisão: R00  
 27/02/14-Gabriel Jacone