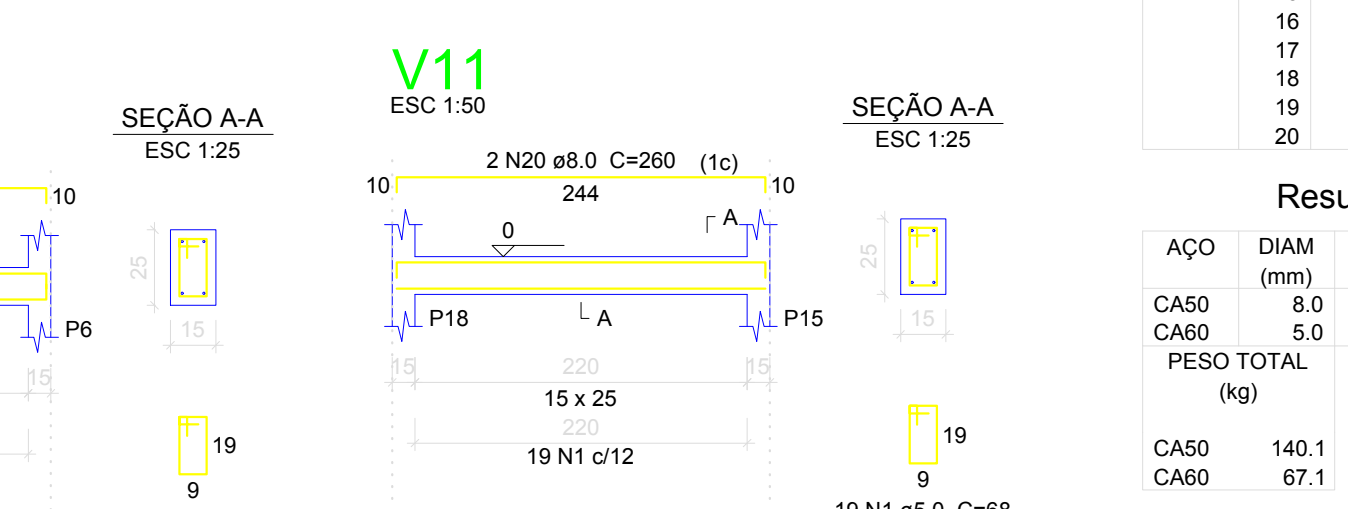
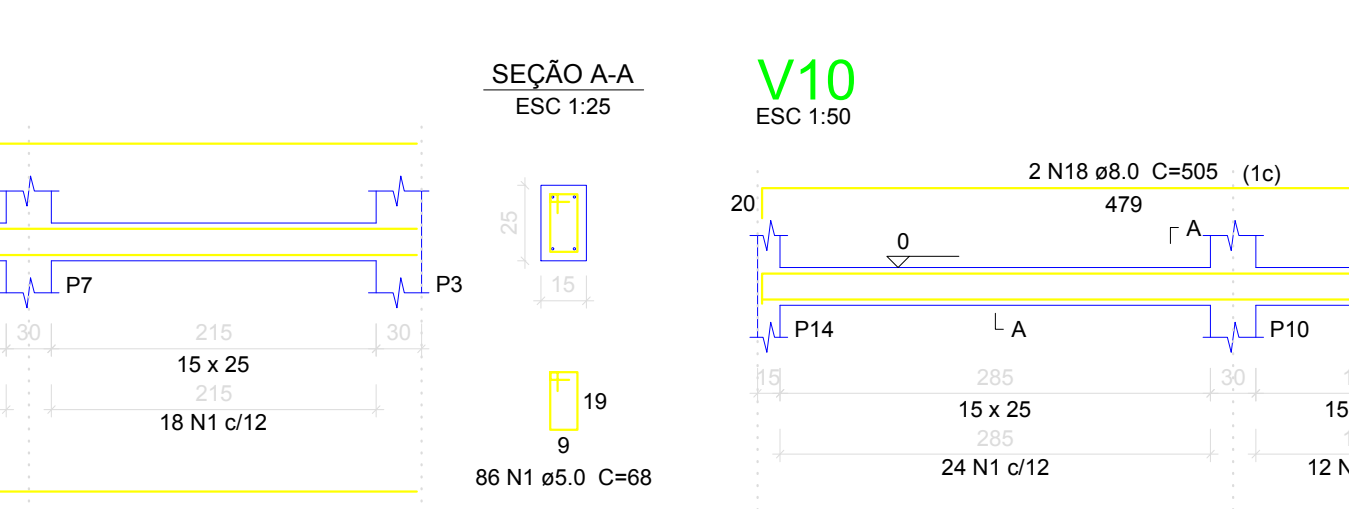
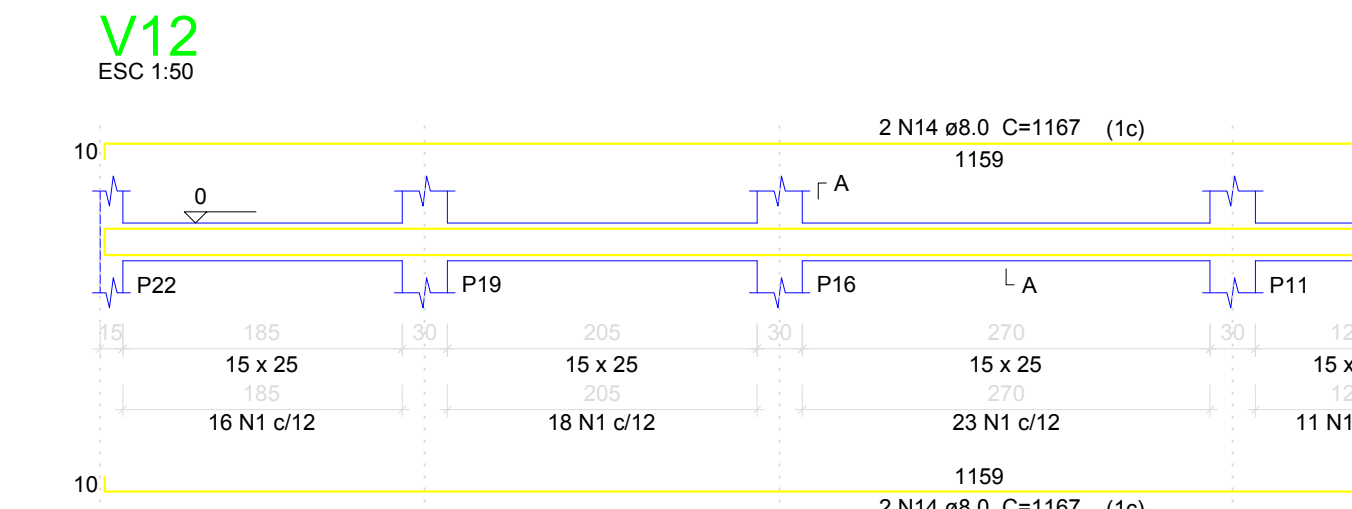
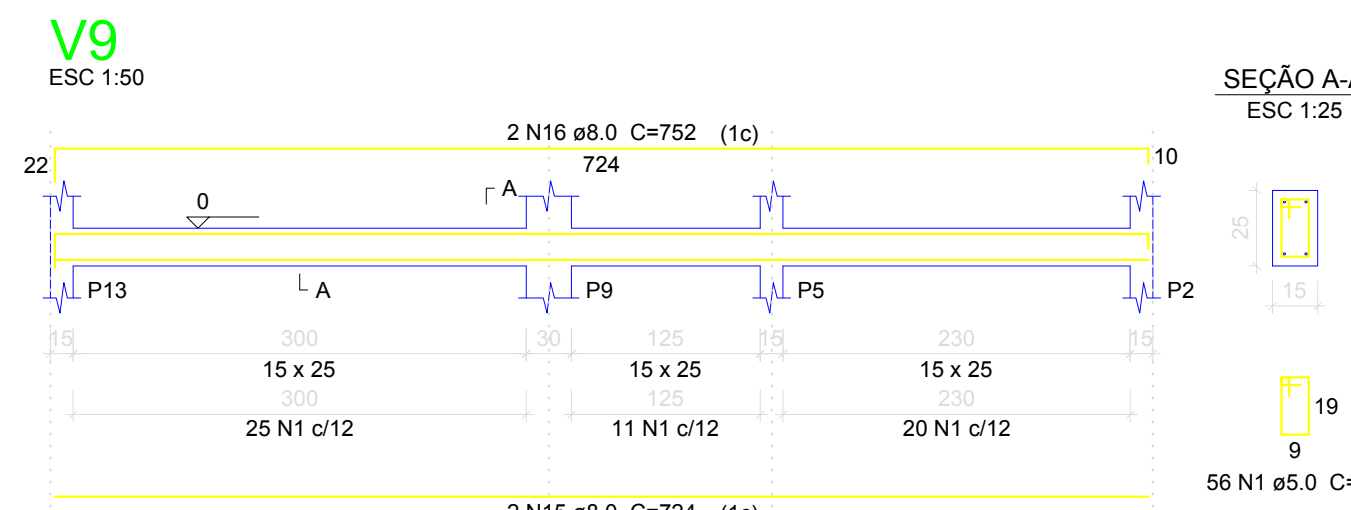
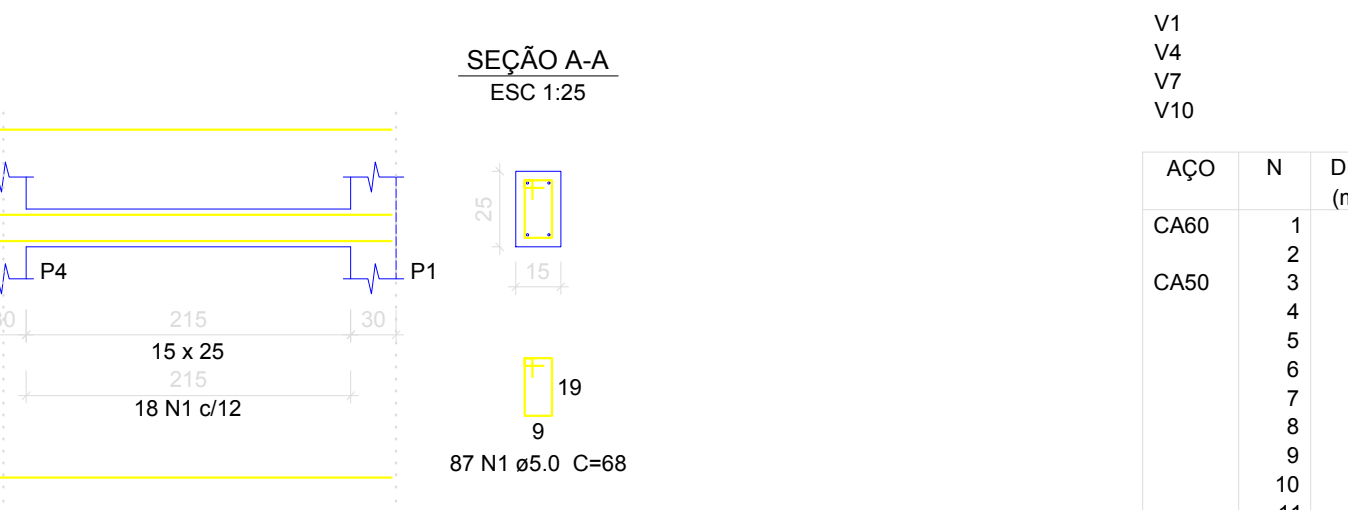
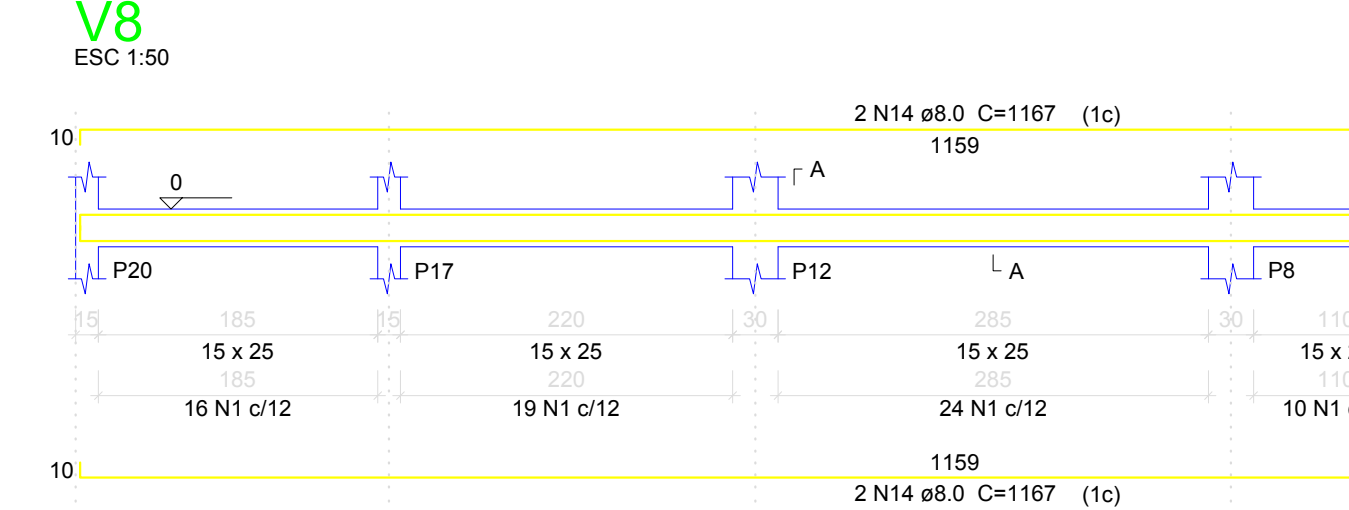
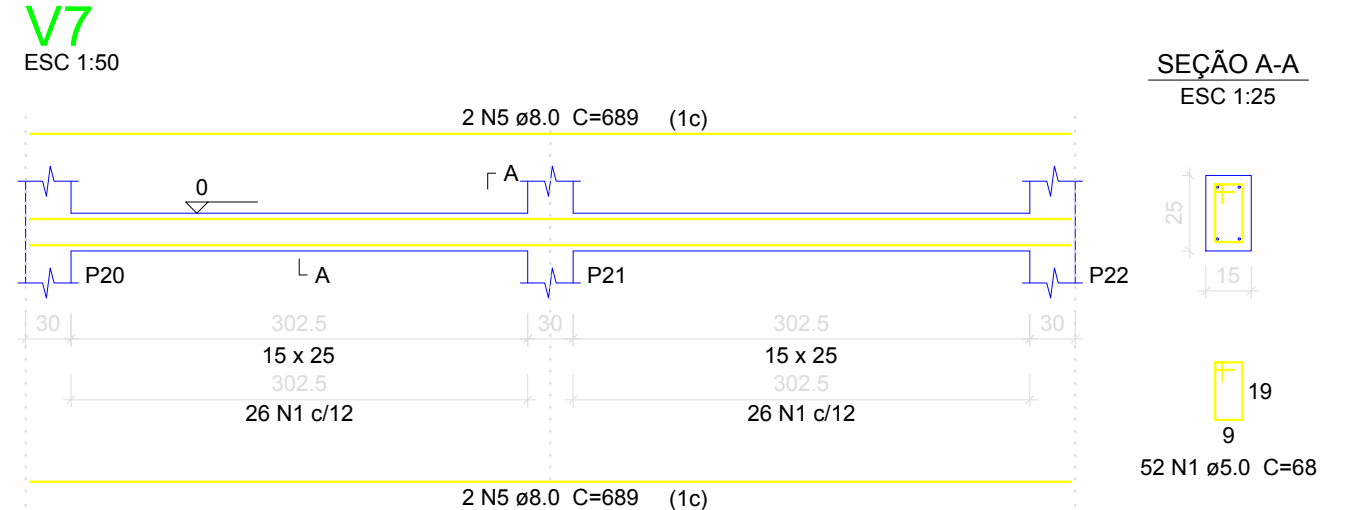
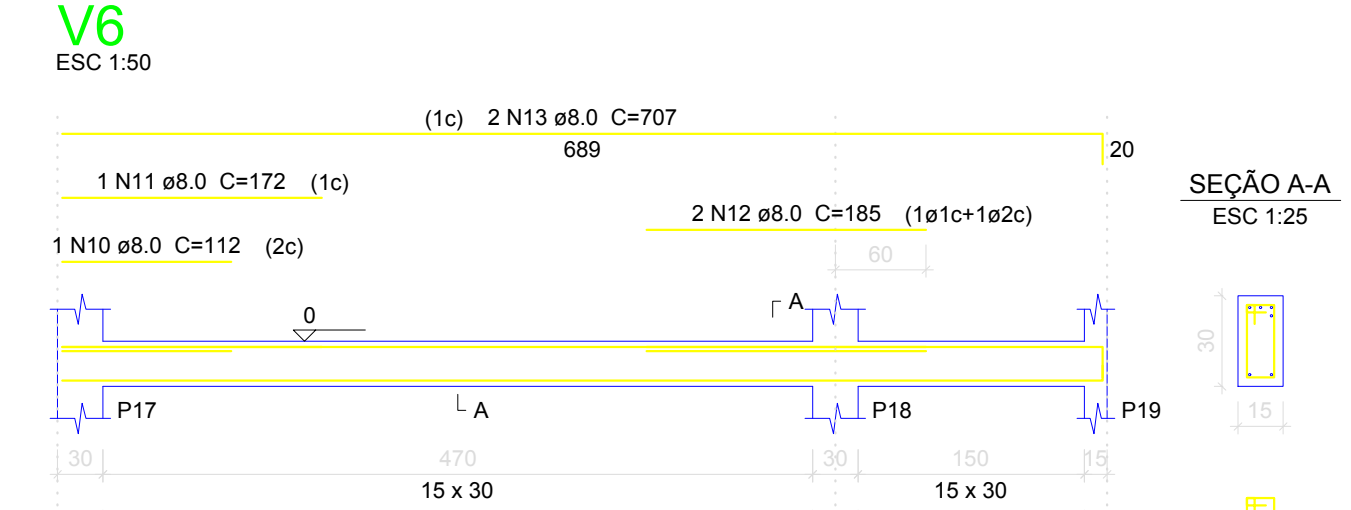
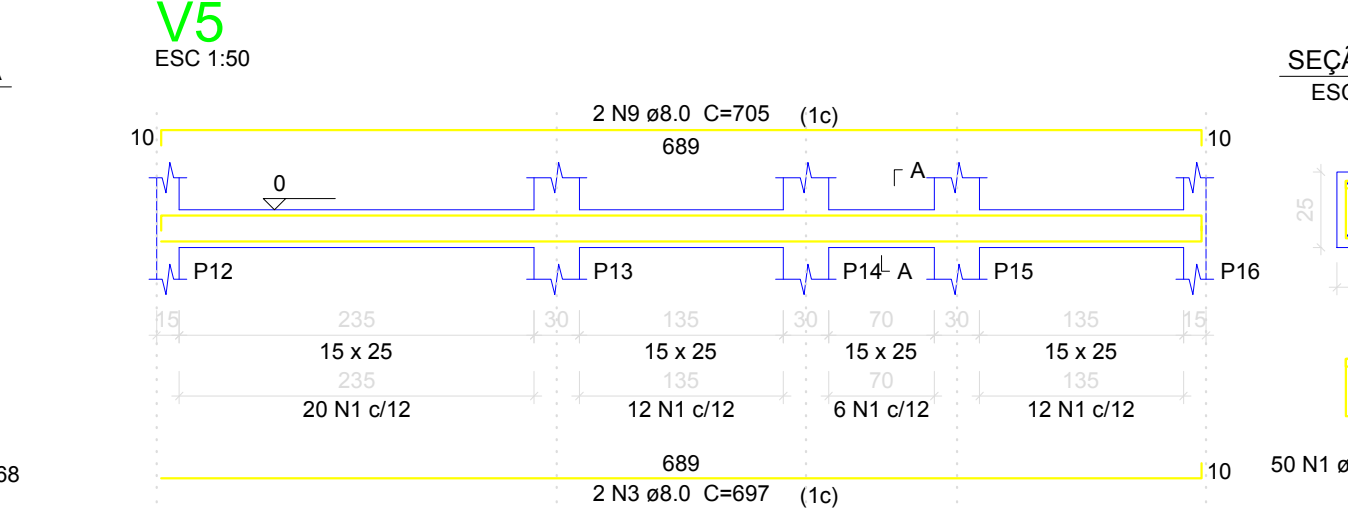
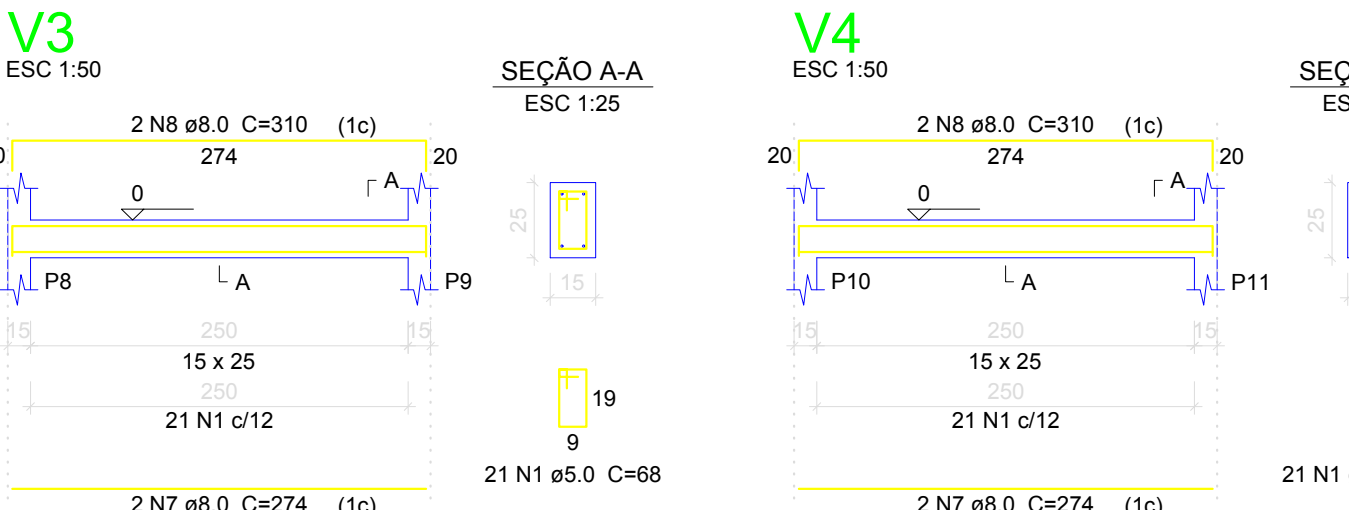
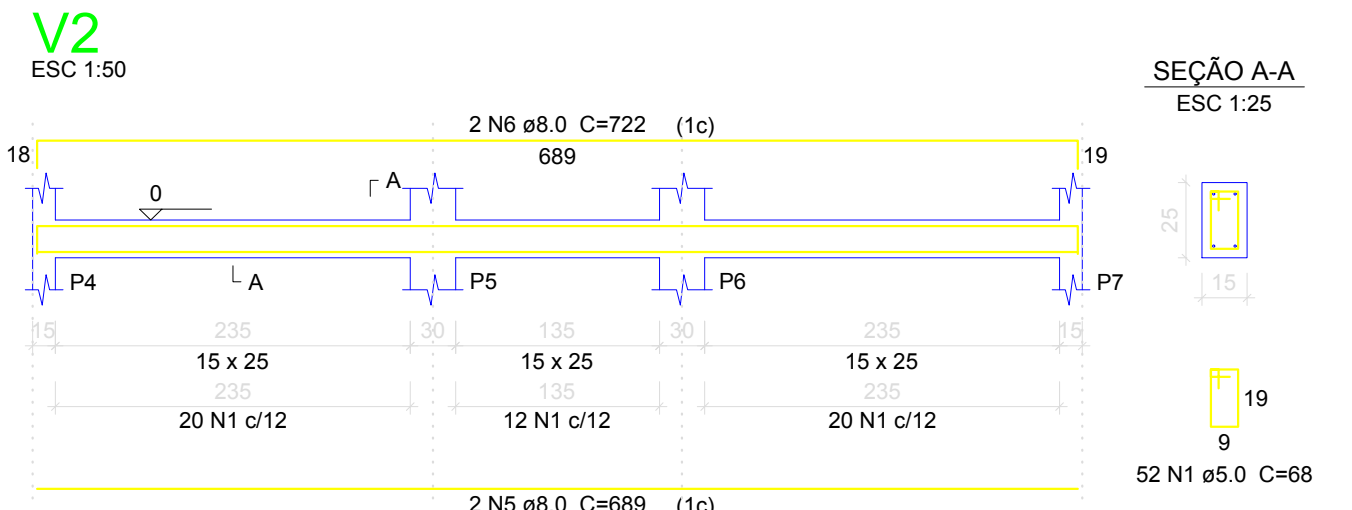
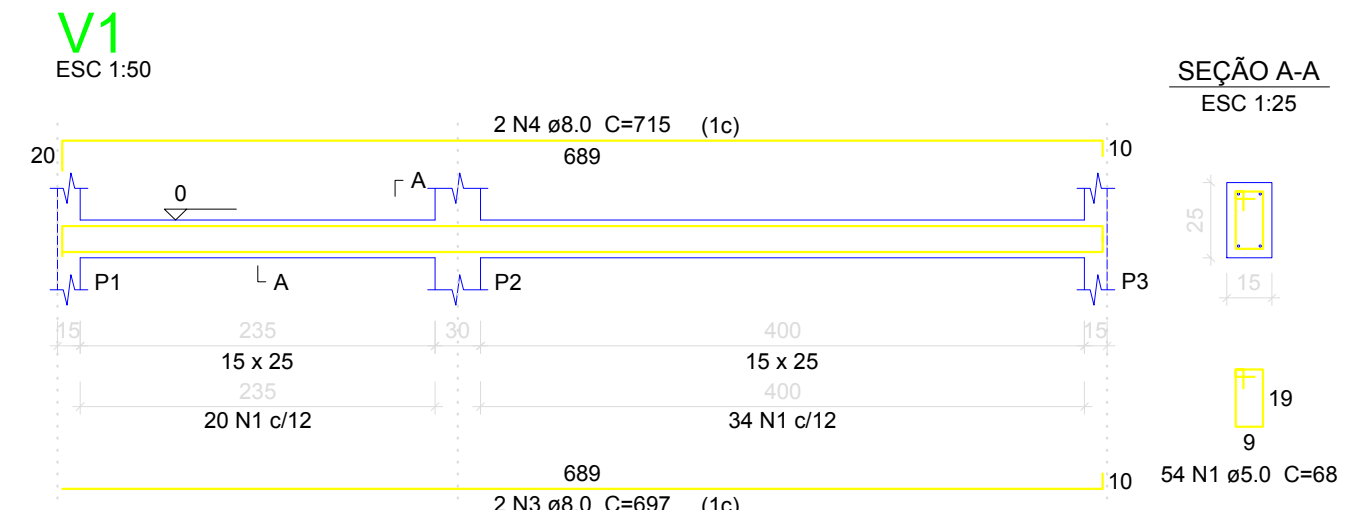


Nome	Seção	Elevação (cm)	Nível (cm)
V1	15x25	0	0
V2	15x25	0	0
V3	15x25	0	0
V4	15x25	0	0
V5	15x25	0	0
V6	15x30	0	0
V7	15x25	0	0
V8	15x25	0	0
V9	15x25	0	0
V10	15x25	0	0
V11	15x25	0	0
V12	15x25	0	0

Características dos materiais  
 fck (kgf/cm²) = 200  
 fcd (kgf/cm²) = 241500  
 Dimensão máxima do agregado = 19 mm

Nome	Seção	Elevação (cm)	Nível (cm)
P1	15 x 30	0	0
P2	15 x 30	0	0
P3	15 x 30	0	0
P4	15 x 30	0	0
P5	15 x 30	0	0
P6	15 x 30	0	0
P7	15 x 30	0	0
P8	15 x 30	0	0
P9	15 x 30	0	0
P10	15 x 30	0	0
P11	15 x 30	0	0
P12	15 x 30	0	0
P13	15 x 30	0	0
P14	15 x 30	0	0
P15	15 x 30	0	0
P16	15 x 30	0	0
P17	15 x 30	0	0
P18	15 x 30	0	0
P19	15 x 30	0	0
P20	15 x 30	0	0
P21	15 x 30	0	0
P22	15 x 30	0	0

Legenda dos Pilares  
 Pilar que morre  
 Pilar que passa  
 Pilar que nasce  
 Pilar com mudança de seção



Relação do aço

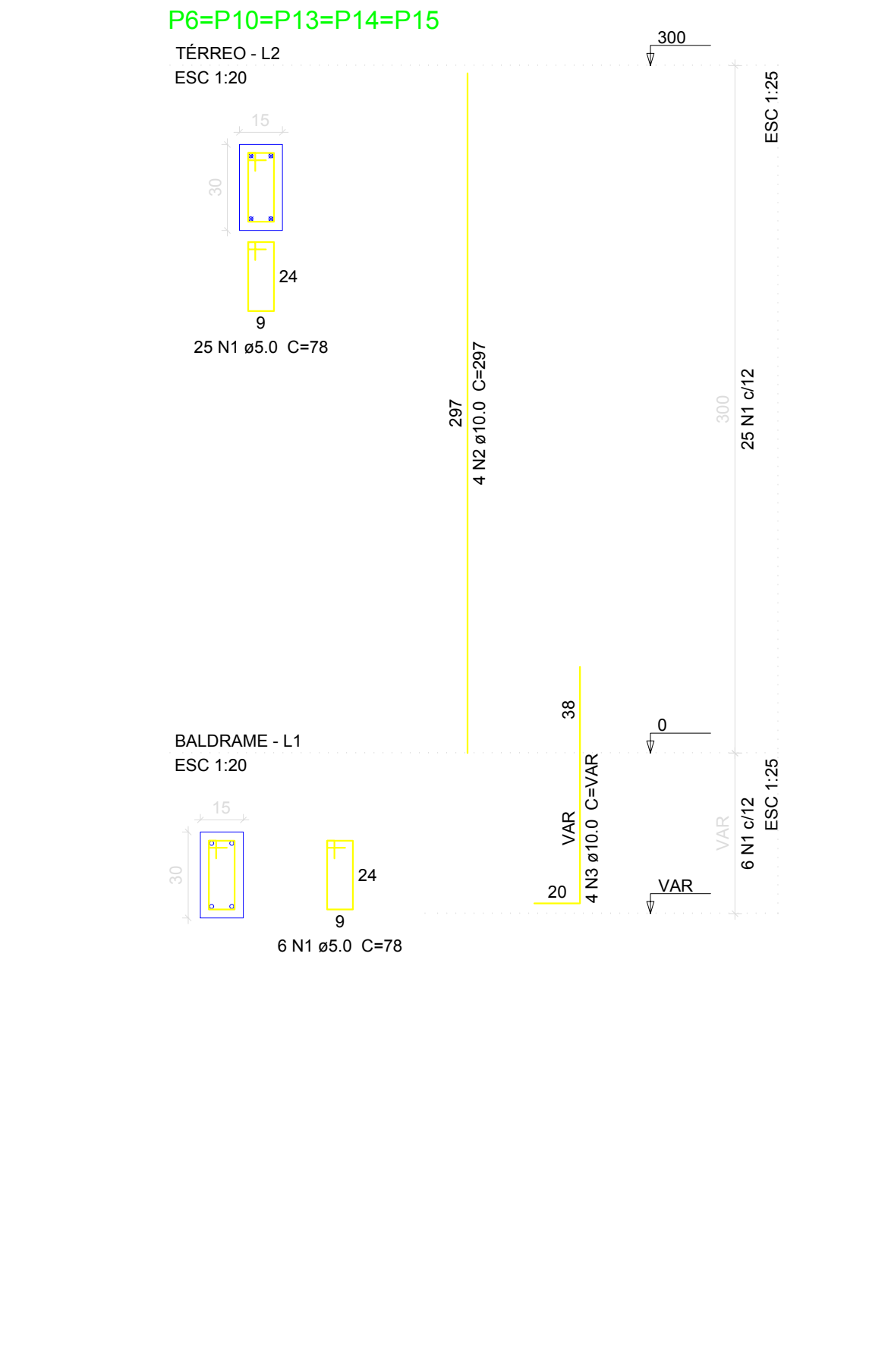
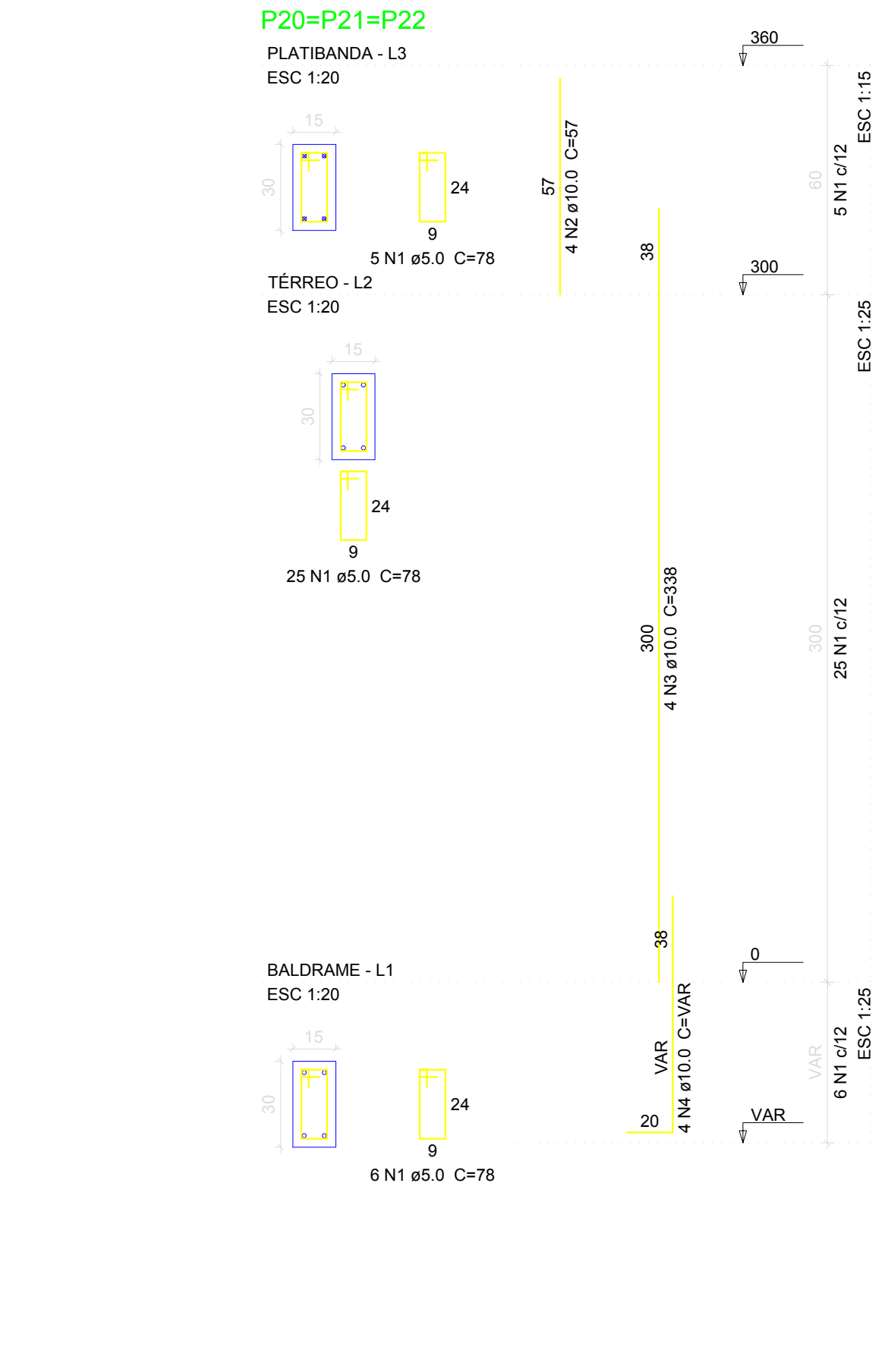
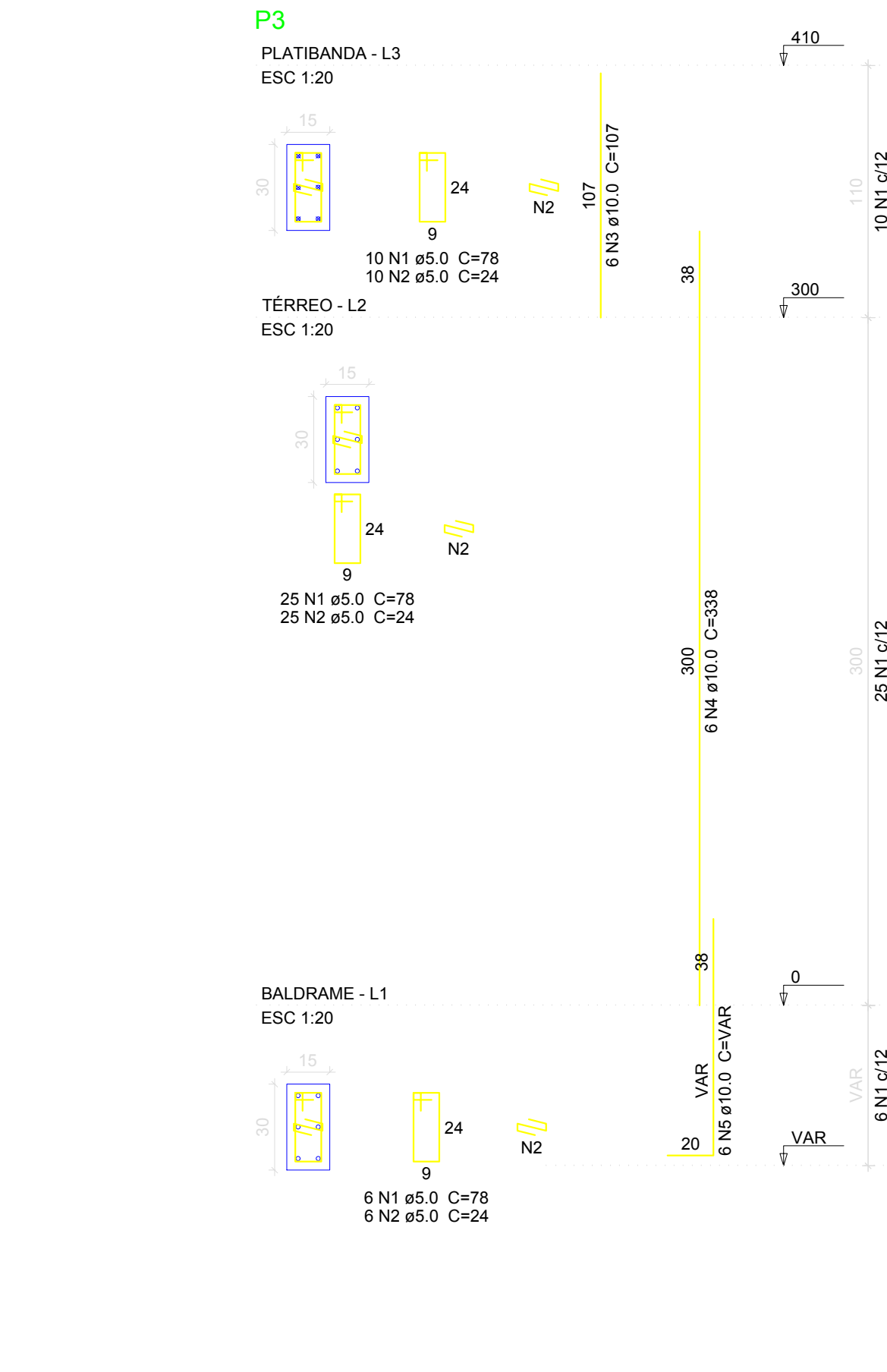
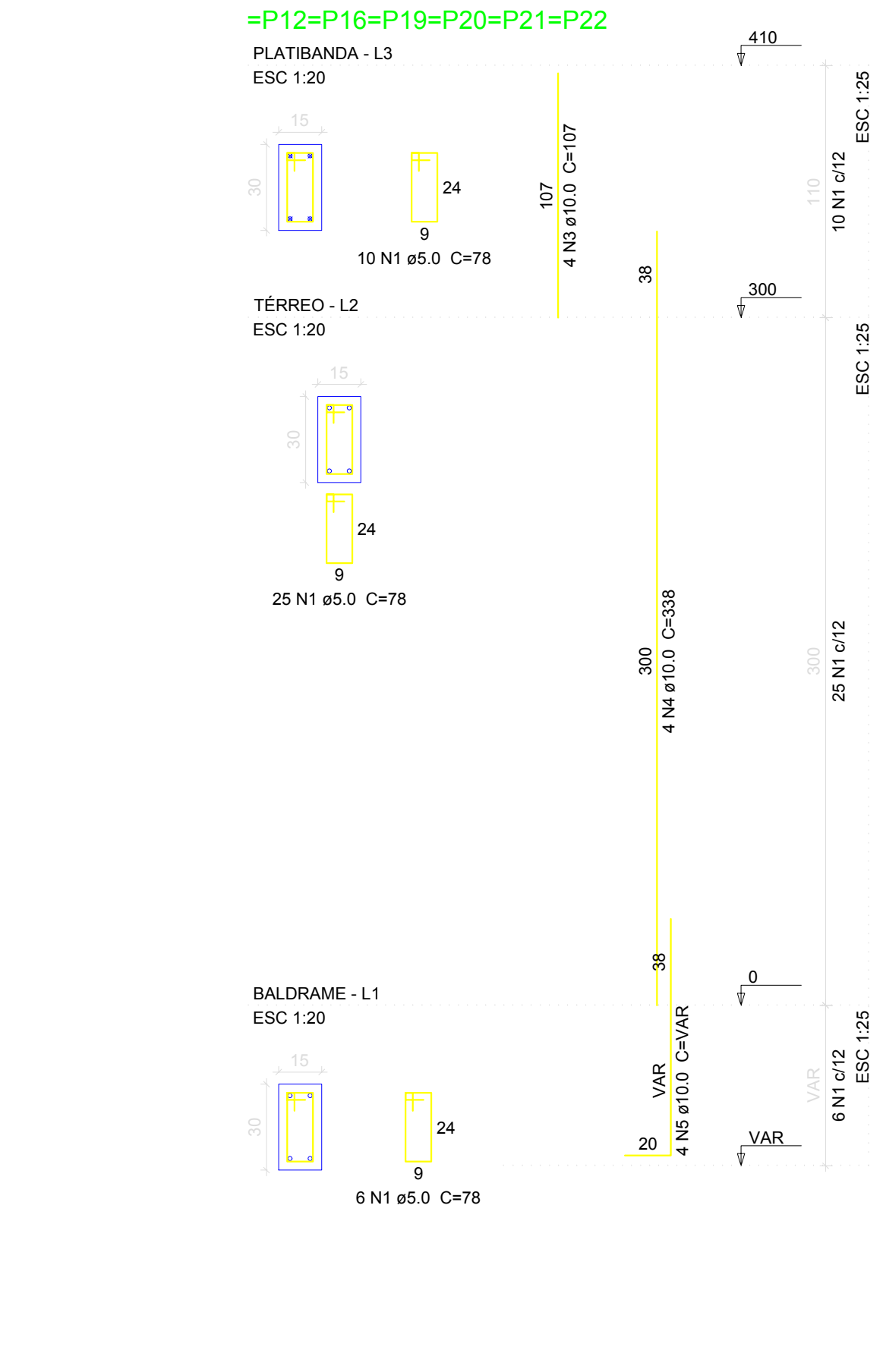
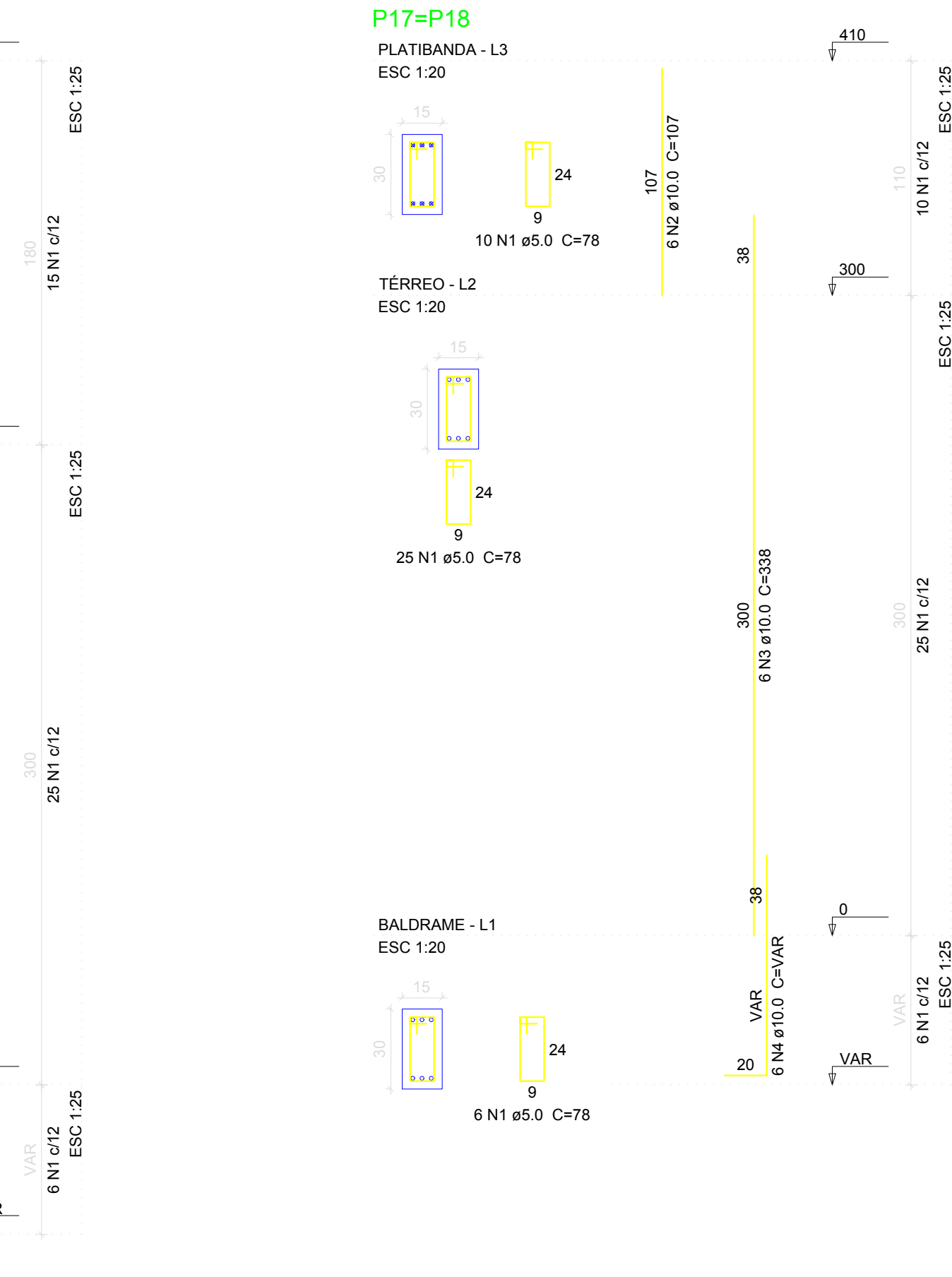
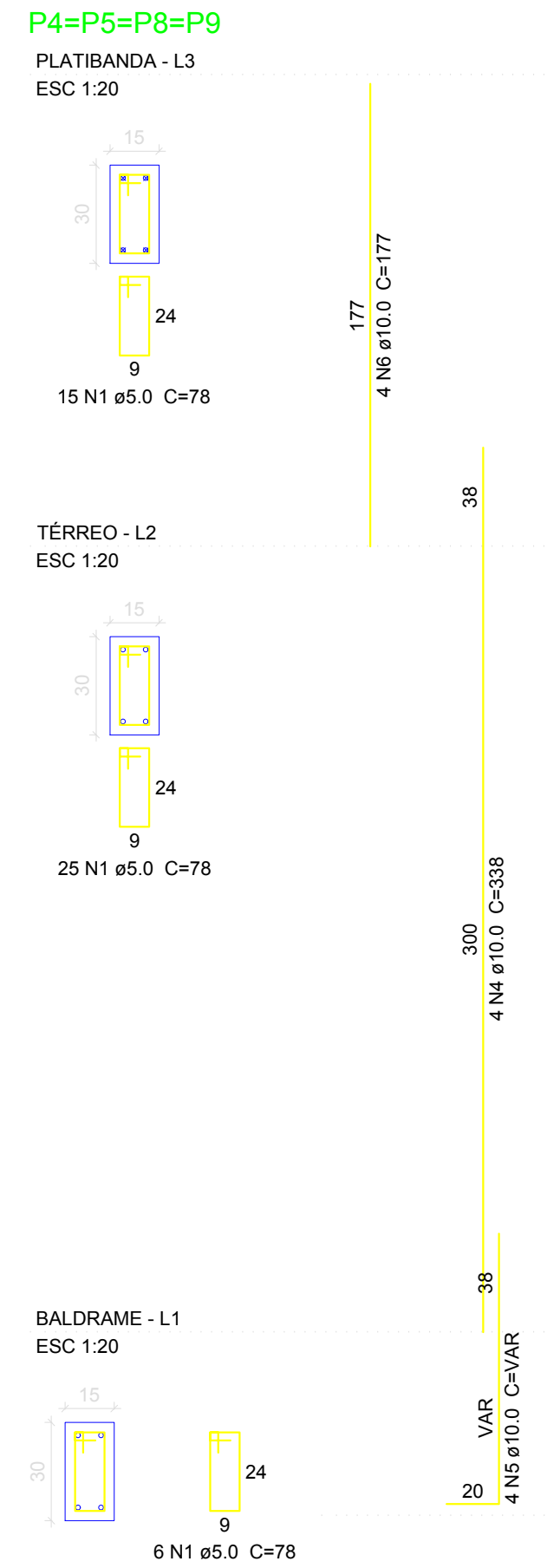
AÇO	N	DIAM (mm)	QUANT	C.UNIT (cm)	C.TOTAL (cm)
CA60	1	5.0	534	68	36312
CA50	3	8.0	42	78	3276
	4	8.0	6	697	4182
	4	8.0	2	715	1430
	5	4.0	6	689	4134
	6	8.0	2	722	1444
	7	8.0	4	274	1096
	8	8.0	4	310	1240
	9	8.0	2	705	1410
	10	8.0	1	112	112
	11	8.0	1	172	172
	12	8.0	2	185	370
	13	8.0	2	707	1414
	14	8.0	8	1167	9336
	15	8.0	2	724	1448
	16	8.0	2	752	1504
	17	8.0	2	487	974
	18	8.0	2	505	1010
	19	8.0	2	244	488
	20	8.0	2	260	520

Resumo do aço

AÇO	DIAM (mm)	C.TOTAL (m)	PESO + 10% (kg)
CA50	8.0	322.9	140.1
CA60	5.0	395.9	67.1
PESO TOTAL (kg)			207.2

Volume de concreto (C-25) = 2.99 m³  
 Área de forma = 51.99 m²

Forma do pavimento BALDRAME (Nível 0) escala 1:50



Relação do aço dos PILARES

AÇO	N	DIAM (mm)	QUANT	C.UNIT (cm)	C.TOTAL (cm)
CA60	1	5.0	728	78	56856
CA50	2	5.0	35	24	840
CA50	3	10.0	74	338	25012
CA50	4	10.0	20	207	5940
CA50	5	10.0	48	107	4922
CA50	6	10.0	16	177	2852
CA50	7	10.0	12	57	684

Resumo do aço  
 CA50 267.1  
 CA60 97.3  
 Volume de concreto (C-25) = 3.87 m³  
 Área de forma = 57.12 m²

DESTACAMENTO DA POLICIA MILITAR  
 BATALHÃO DE CORUMBAIBA - GO

**PROJETO ESTRUTURAL**

PROPRIETÁRIO: PREFEITURA MUNICIPAL DE CORUMBAIBA  
 PROJETO / LOCAL: Rua Odair Ferreira Cândido, esquina com Rua Lenir Garcia Setor II - Município de Corumbáiba - GO

PROPRIETÁRIO: PREFEITURA MUNICIPAL DE CORUMBAIBA  
 CNPJ: 07.093.888/01-05

PROJETISTA: LUIZ GUSTAVO PIMENTA DE FARIAS  
 CREA: 1488410-GO

DETALHAMENTO DAS FORMAS E AÇO DAS VIGAS  
 BALDRAMES E FRUMADA DOS PILARES

Desenho: Luiz Pimenta (Revisão: 00) FOLHA  
 Data: Janeiro / 2024 Escala: Indicada **02/04**