

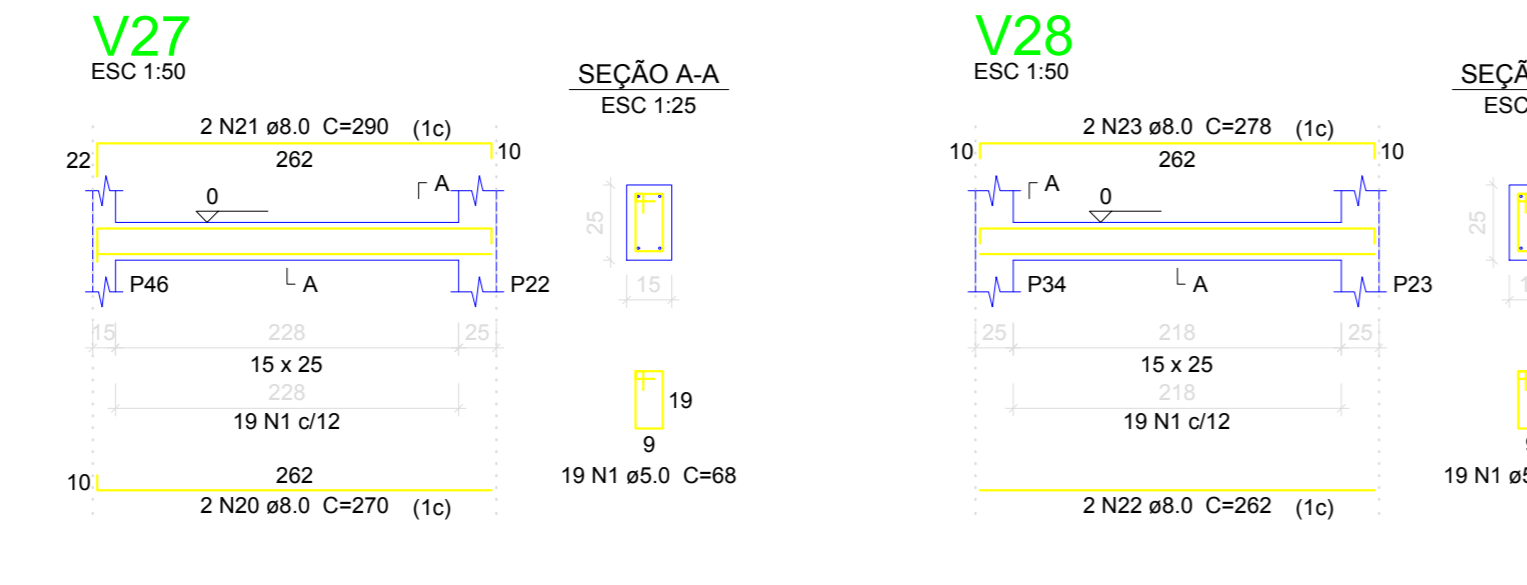
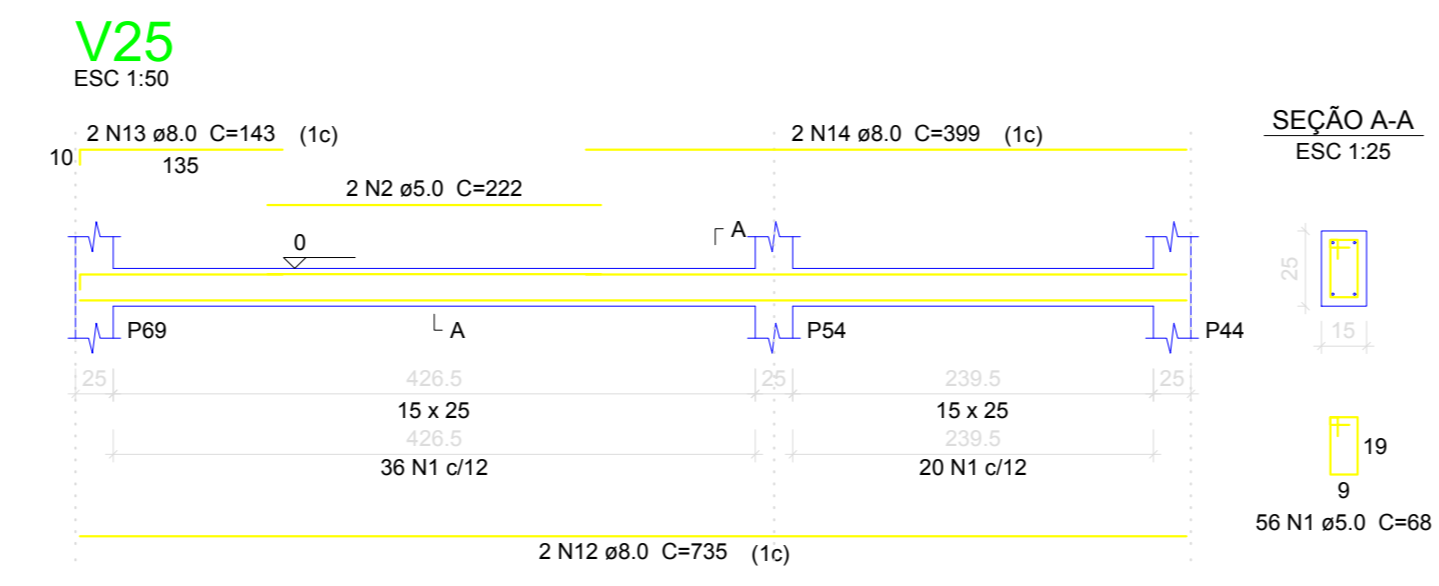
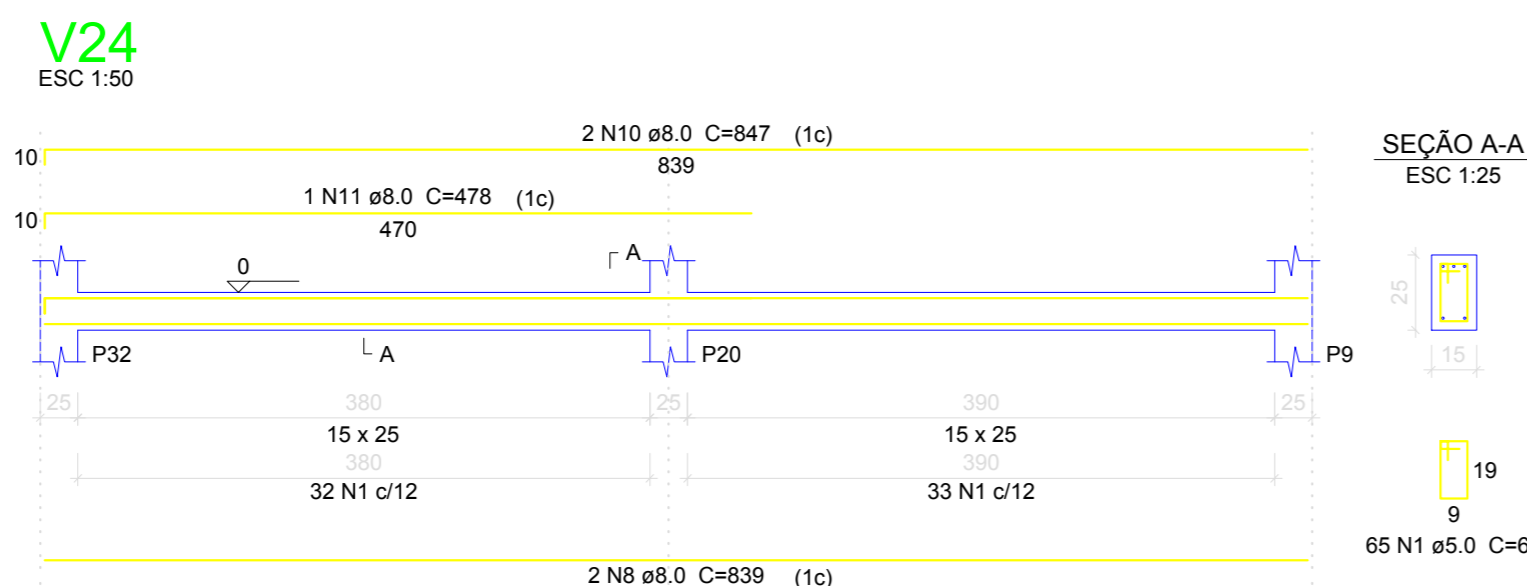
Relação do aço

ACO	N	DIAM (mm)	QUANT	C.UNIT (cm)	C.TOTAL (cm)
CA80	1	5.0	1222	68	83096
CA80	2	5.0	12	222	2664
CA80	3	8.0	2	942	1884
CA80	4	8.0	2	860	1720
CA80	5	8.0	3	155	465
CA80	6	8.0	2	1000	2400
CA80	7	8.0	2	627	1254
CA80	8	8.0	16	839	13424
CA80	9	8.0	1	473	473
CA80	10	8.0	16	847	13552
CA80	11	8.0	7	478	3346
CA80	12	8.0	16	735	11760
CA80	13	8.0	12	143	1716
CA80	14	8.0	12	399	4788
CA80	15	8.0	2	975	1950
CA80	16	8.0	2	827	1654
CA80	17	8.0	1	185	185
CA80	18	8.0	2	1198	2396
CA80	19	8.0	2	645	1290
CA80	20	8.0	2	270	540
CA80	21	8.0	2	290	580
CA80	22	8.0	2	282	564
CA80	23	8.0	2	278	556

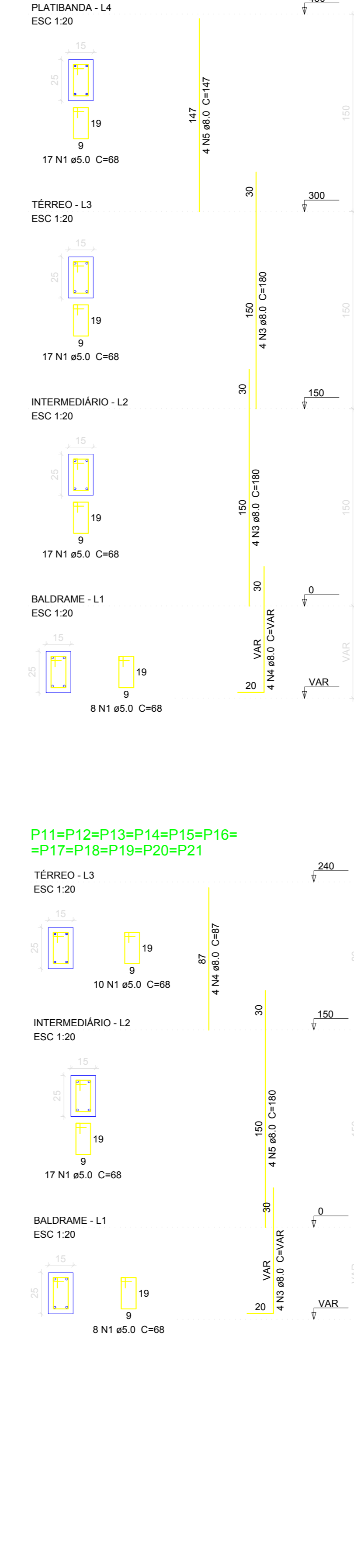
Resumo do aço

ACO	DIAM (mm)	C.TOTAL (cm)	PESO (kg)
CA80	8.0	864.4	262.1
CA80	5.0	857.6	132.2
CA80	262.1		
CA80	132.2		

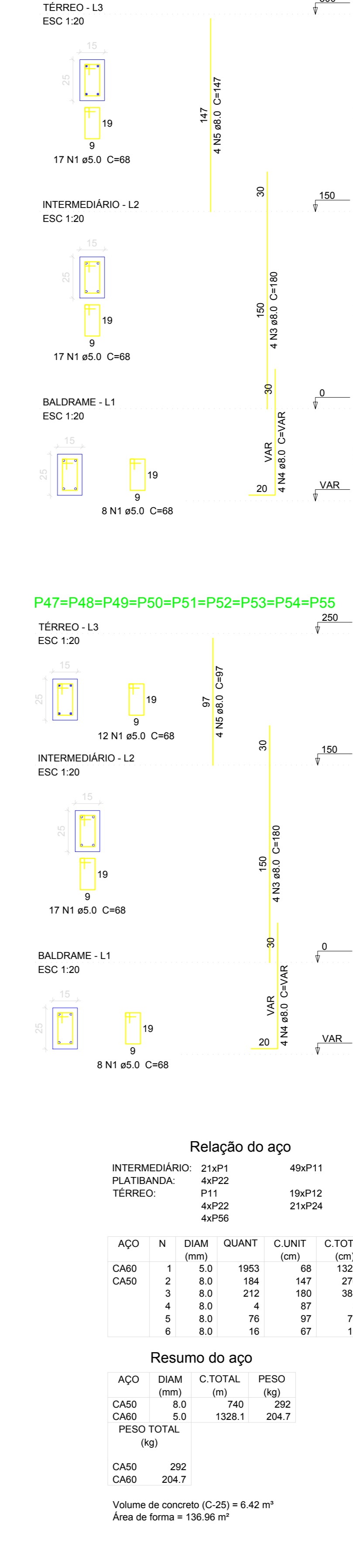
Volume de concreto (C-25) = 6.42 m³
Área de forma = 134.28 m²



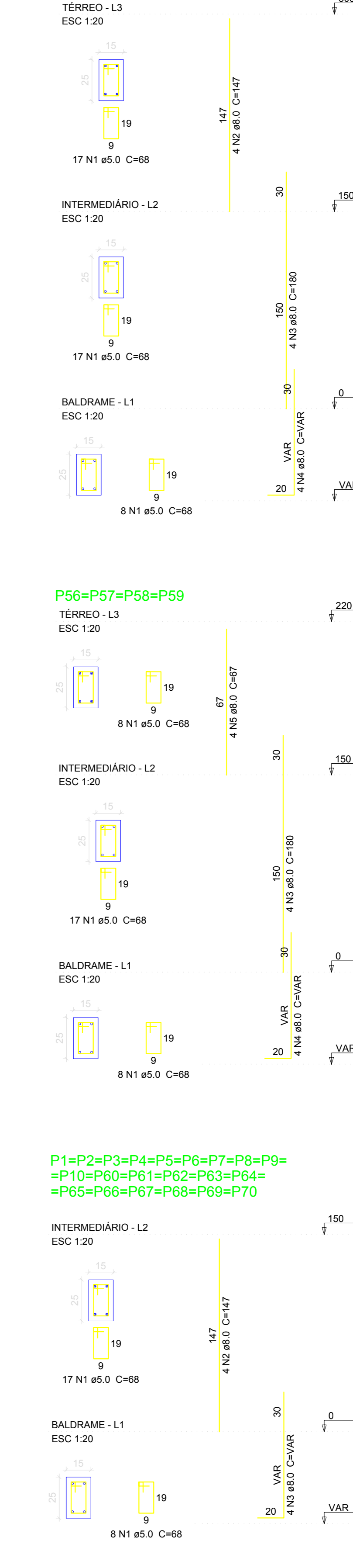
P22=P23=P34=P46



P24=P25=P26=P27=P28=P29=P30=P31=P32=P33



P38=P39=P40=P41=P42=P43=P44=P45



Relação do aço

ACO	N	DIAM (mm)	QUANT	C.UNIT (cm)	C.TOTAL (cm)
CA80	1	5.0	1953	68	132804
CA80	2	8.0	184	147	27048
CA80	3	8.0	212	180	38160
CA80	4	8.0	4	67	268
CA80	5	8.0	78	97	7372
CA80	6	8.0	16	67	1072

Resumo do aço

ACO	DIAM (mm)	C.TOTAL (cm)	PESO (kg)
CA80	8.0	740	292
CA80	5.0	1328.1	204.7
CA80	292		
CA80	204.7		

Volume de concreto (C-25) = 6.42 m³
Área de forma = 138.96 m²

P1=P2=P3=P4=P5=P6=P7=P8=P9=P10=P11=P12=P13=P14=P15=P16=P17=P18=P19=P20=P21

ACO	N	DIAM (mm)	QUANT	C.UNIT (cm)	C.TOTAL (cm)
CA80	1	5.0	1953	68	132804
CA80	2	8.0	184	147	27048
CA80	3	8.0	212	180	38160
CA80	4	8.0	4	67	268
CA80	5	8.0	78	97	7372
CA80	6	8.0	16	67	1072

Relação do aço

ACO	N	DIAM (mm)	QUANT	C.UNIT (cm)	C.TOTAL (cm)
CA80	1	5.0	1953	68	132804
CA80	2	8.0	184	147	27048
CA80	3	8.0	212	180	38160
CA80	4	8.0	4	67	268
CA80	5	8.0	78	97	7372
CA80	6	8.0	16	67	1072

ABRIGO DE ANIMAIS
PROJETO ESTRUTURAL - BAIAS

PROPRIETÁRIO: PREFEITURA MUNICIPAL DE CORUMBÁIBA
PROJETO / LOCAL: GO - 210, KM 2 - Fazenda Arapendidos - Município de CorumbáIBA - GO

PROPRIETÁRIO: FUNDO MUNICIPAL DE SAUDE DE CORUMBÁIBA
CNPJ: 1117888880127

PROJETA: RIVALDI TEIXEIRA SANTOS
CREA: 1615207160-00

DETALHAMENTO ACO DAS VIGAS BALDRAMES (PARTE 2)
E DETALHAMENTO DA PRUMADA DOS PILARES

Desenho: Luiz Pimenta / Revisão: 00 / FOLHA: 03/06
Data: Março / 2024 / Escala: Indicada