

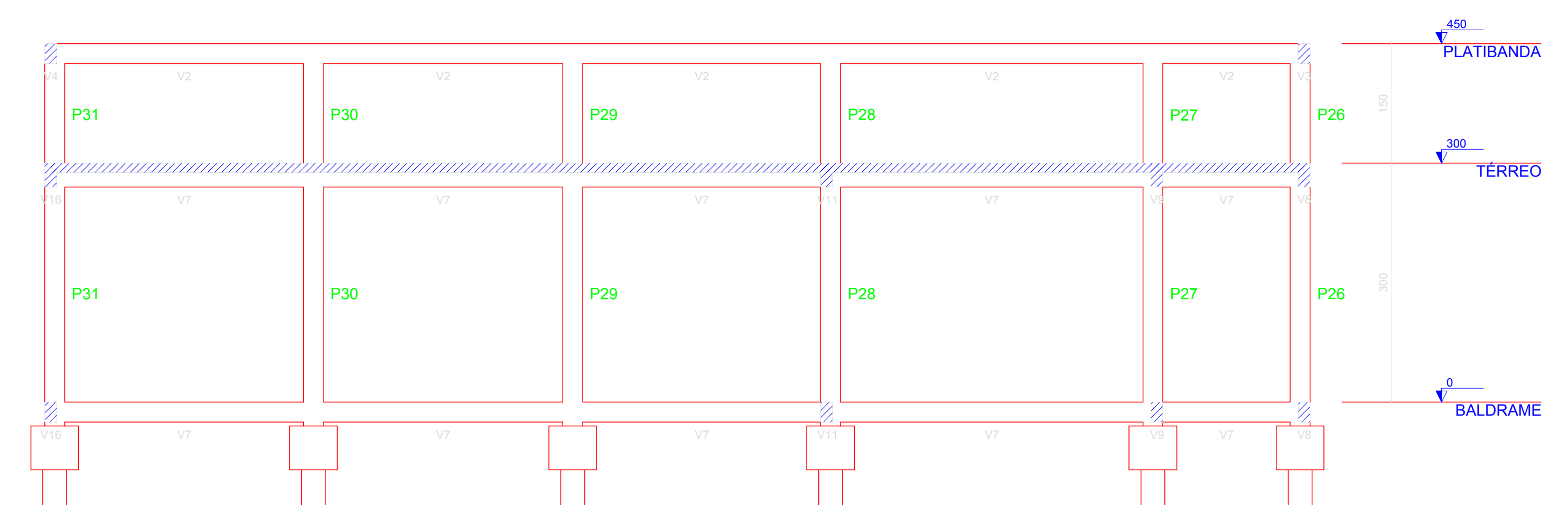
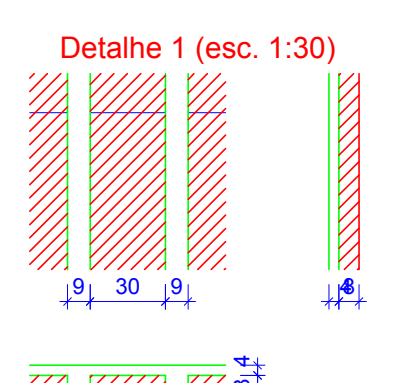
Forma do pavimento TÉRREO (Nível 300) escala 1:50

Plates		
Nome	Seção (cm)	Elevação (cm)
P1	15 x 25	0 300
P2	15 x 25	0 300
P3	15 x 25	0 300
P4	15 x 25	0 300
P5	15 x 25	0 300
P6	15 x 25	0 300
P7	15 x 25	0 300
P8	15 x 25	0 300
P9	15 x 25	0 300
P10	15 x 25	0 300
P11	15 x 25	0 300
P12	15 x 25	0 300
P13	15 x 25	0 300
P14	15 x 25	0 300
P15	15 x 25	0 300
P16	15 x 25	0 300
P17	15 x 25	0 300
P18	15 x 25	0 300
P19	15 x 25	0 300
P20	15 x 25	0 300
P21	15 x 25	0 300
P22	15 x 25	0 300
P23	15 x 25	0 300
P24	15 x 25	0 300
P25	15 x 25	0 300
P26	15 x 25	0 300
P27	15 x 25	0 300
P28	15 x 25	0 300
P29	15 x 25	0 300
P30	15 x 25	0 300
P31	15 x 25	0 300

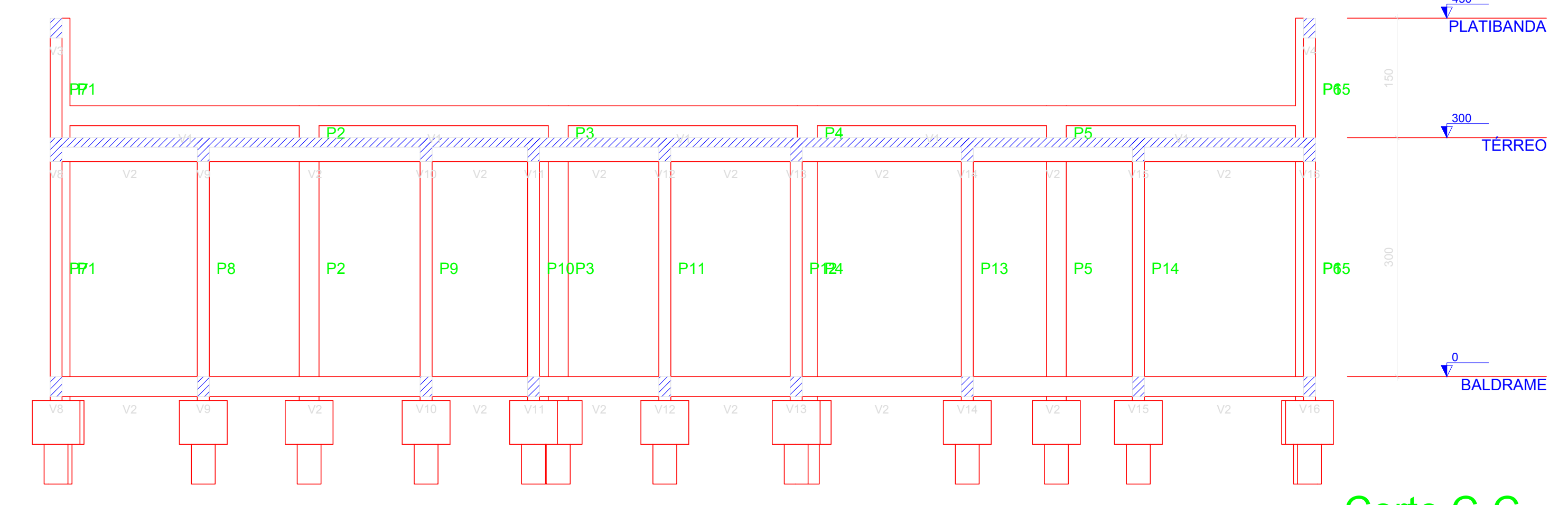
Lajes						
Nome	Tipo	Altura (cm)	Elevação (cm)	Nível (cm)	Peso próprio (kg/m²)	Sobrecarga (kg/m²)
L1	Trelçada ID	12	0 300	147	100	150
L2	Trelçada ID	12	0 300	147	100	150
L3	Trelçada ID	12	0 300	147	100	150
L4	Trelçada ID	12	0 300	147	100	150
L5	Trelçada ID	12	0 300	147	100	150
L6	Trelçada ID	12	0 300	147	100	150
L7	Trelçada ID	12	0 300	147	100	150
L8	Trelçada ID	12	0 300	147	100	150
L9	Trelçada ID	12	0 300	147	100	150
L10	Trelçada ID	12	0 300	147	100	150
L11	Trelçada ID	12	0 300	147	100	150
L12	Trelçada ID	12	0 300	147	100	150
L13	Trelçada ID	12	0 300	147	100	150

Blocos de enchimento			
Detalhe	Tipo	Nome	Quantidade
1	EPS	Unidirecional	88/30/125

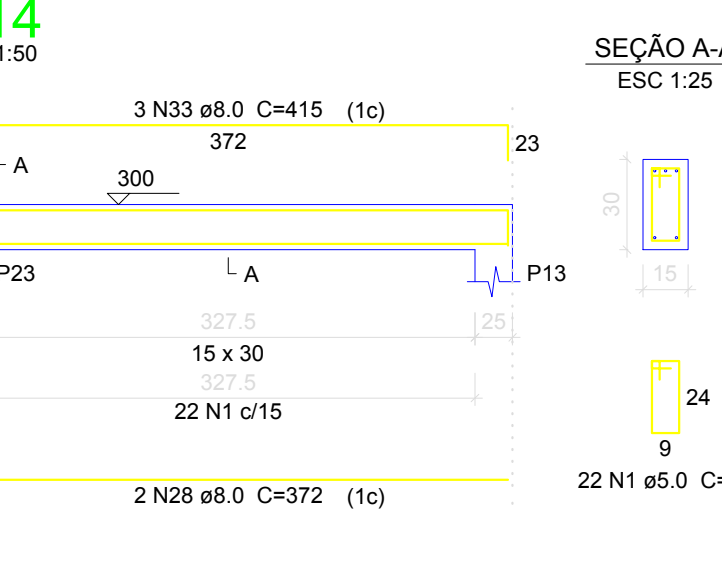
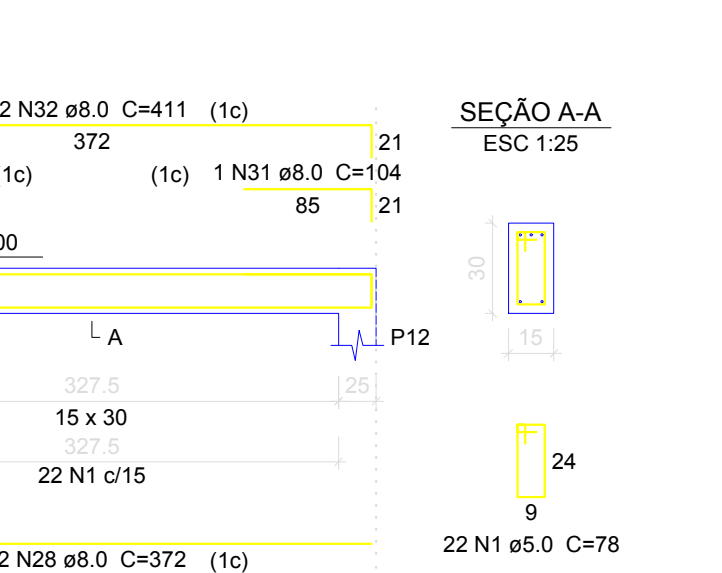
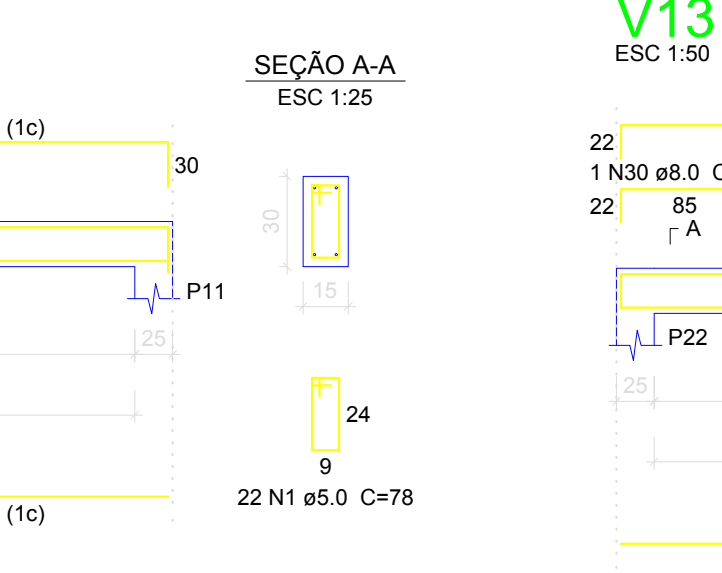
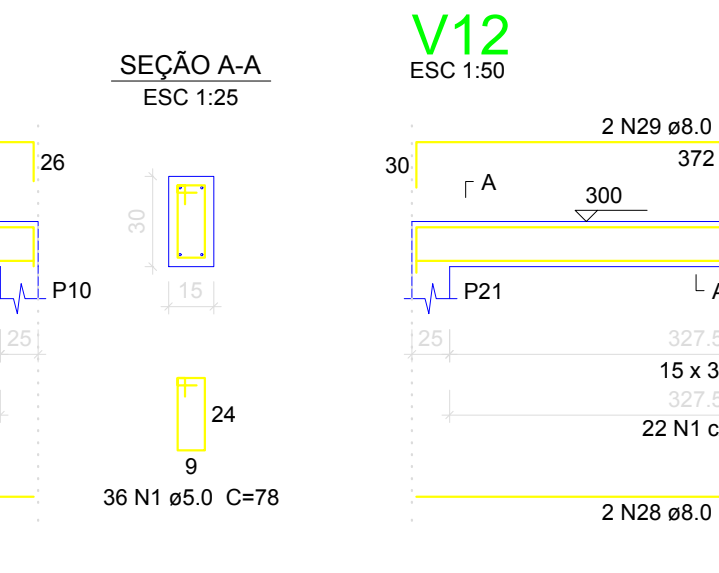
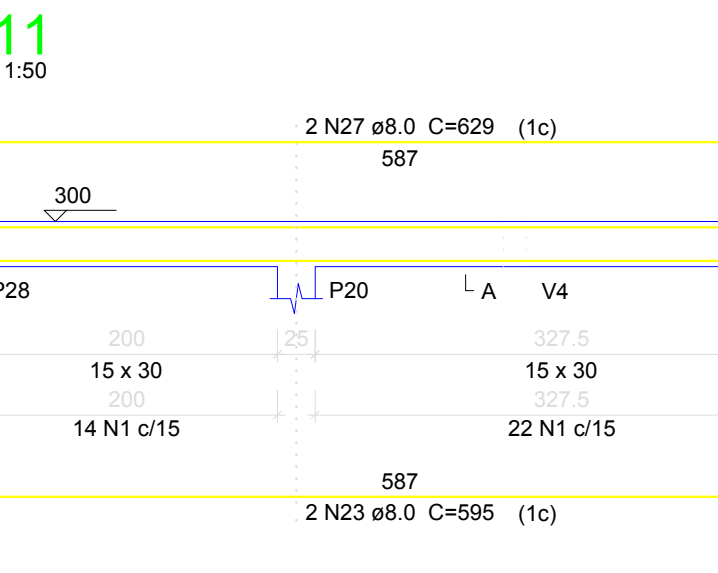
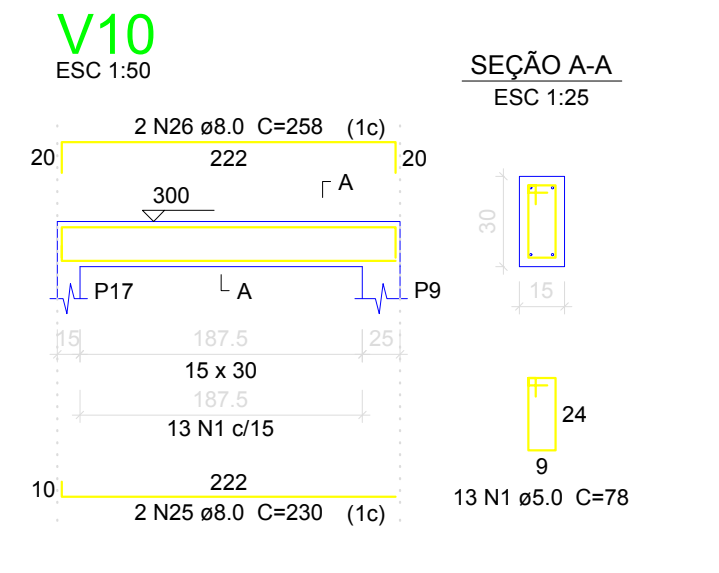
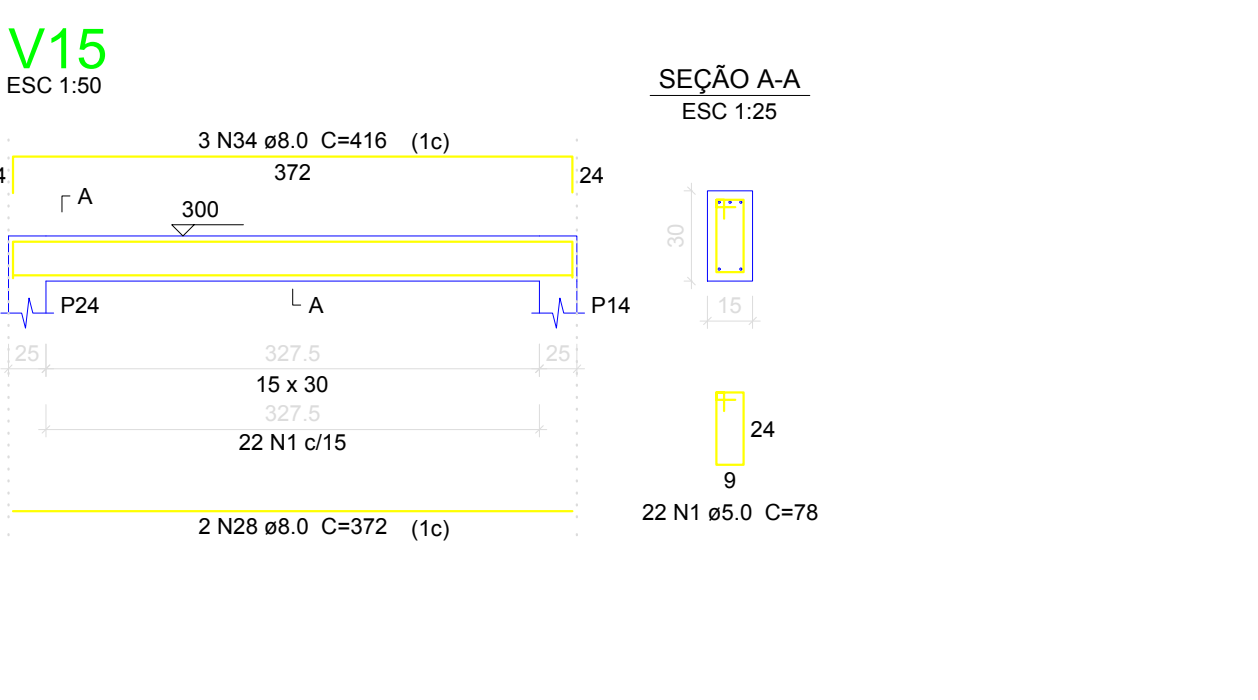
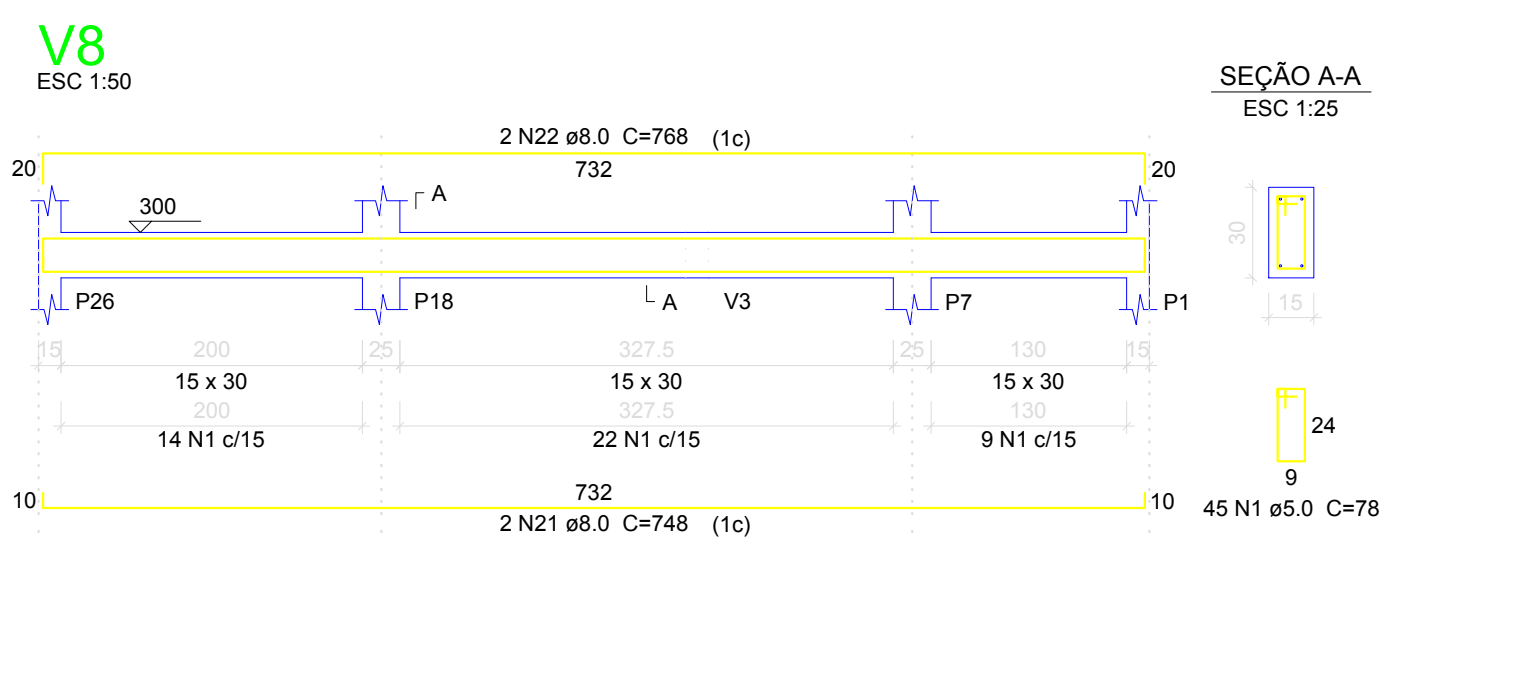
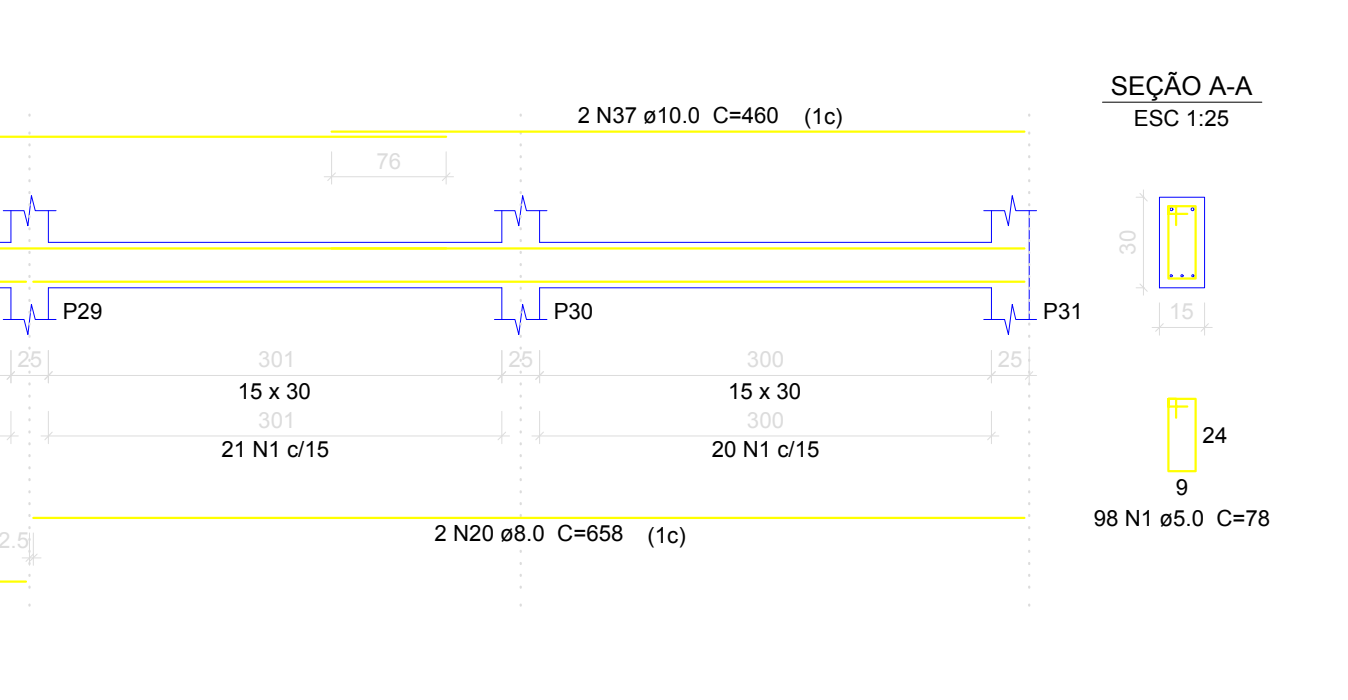
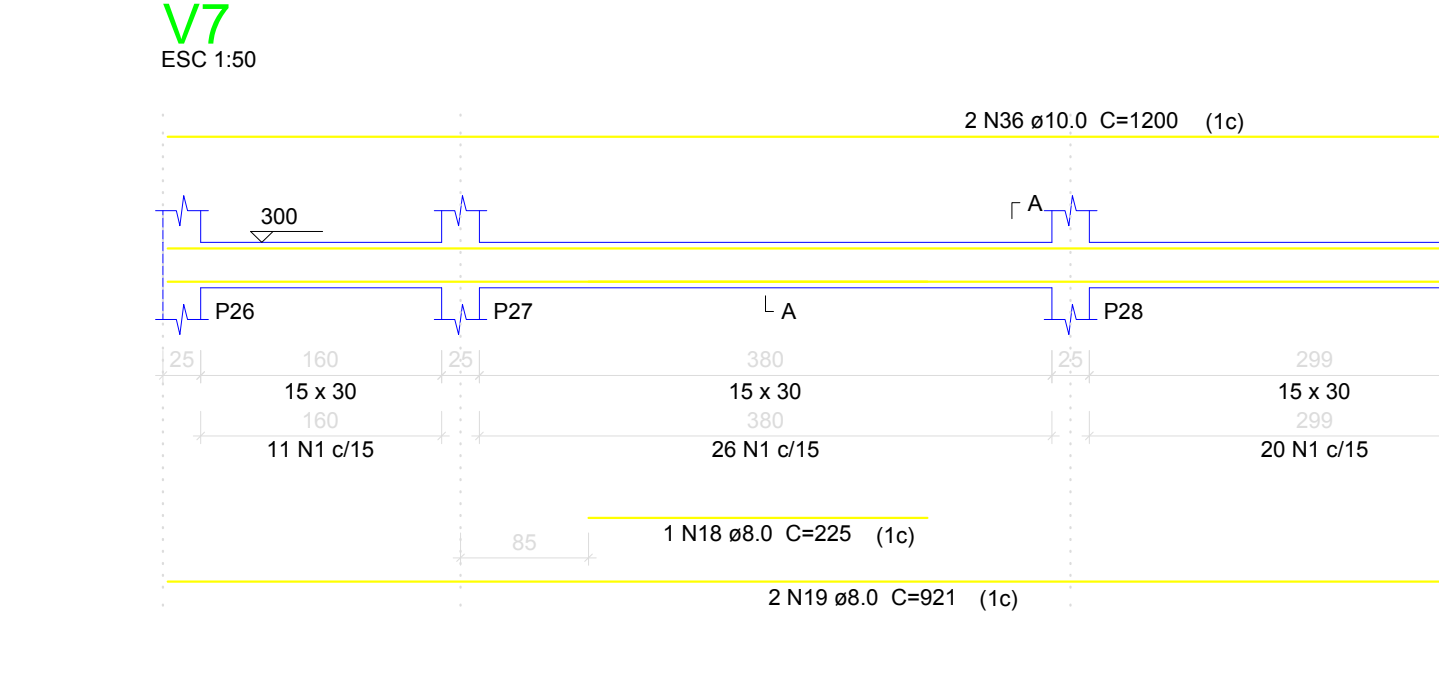
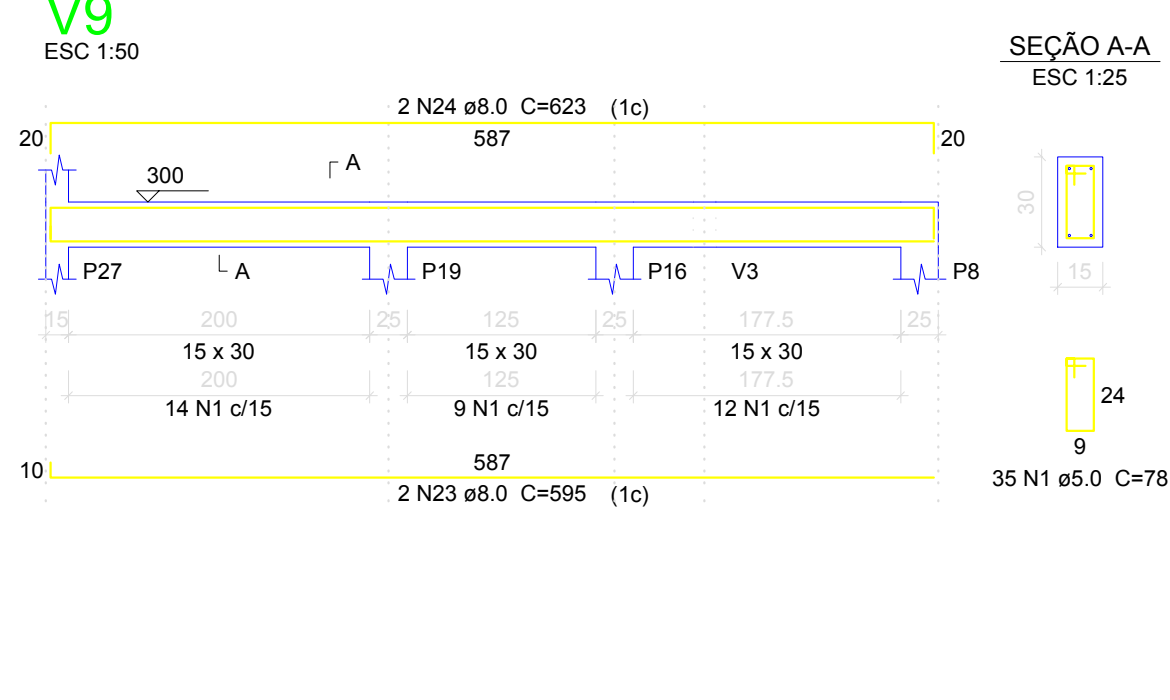
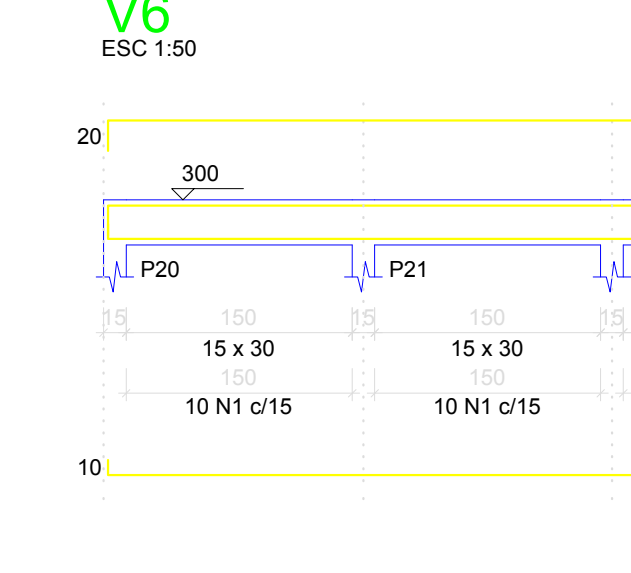
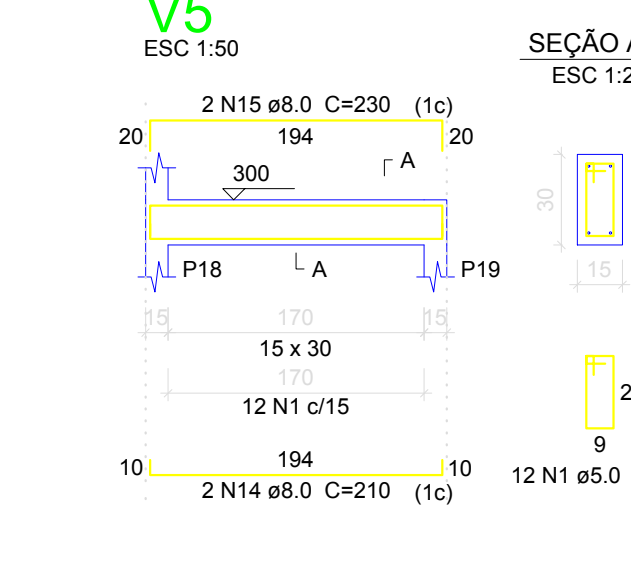
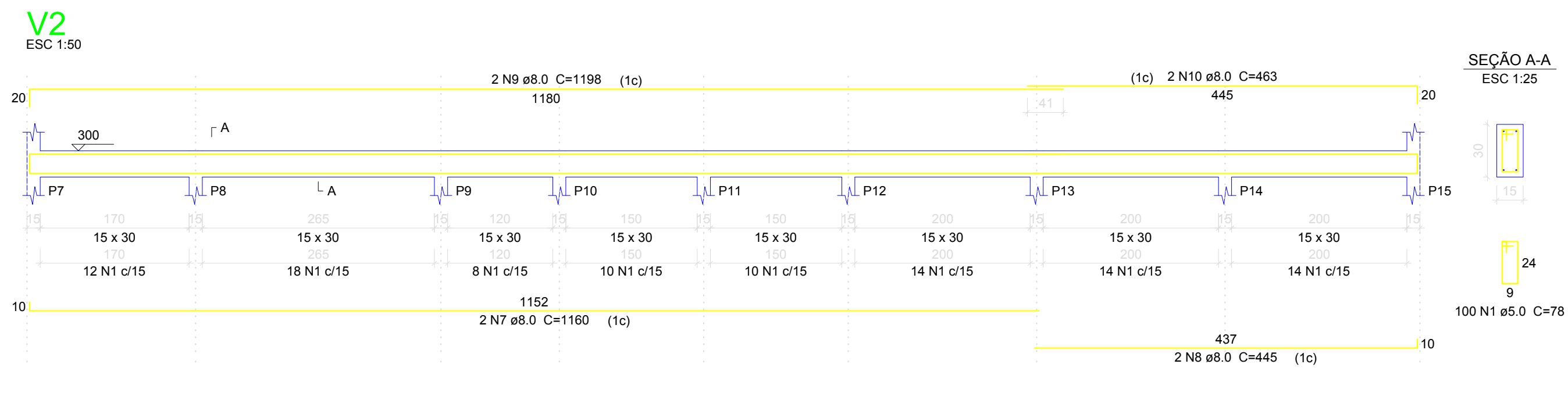
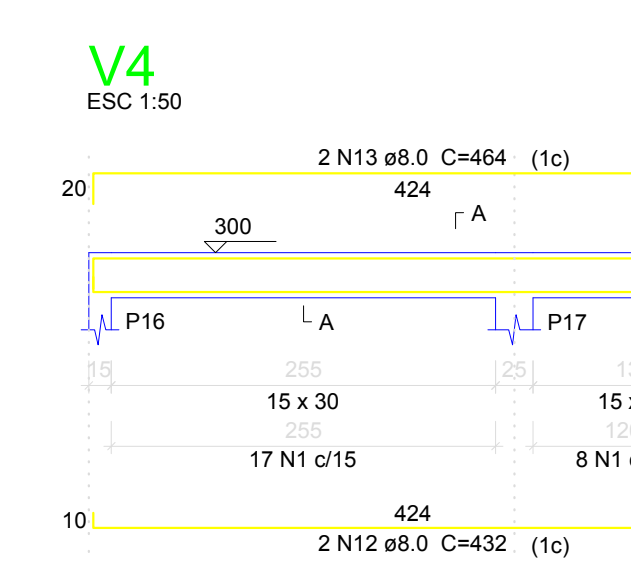
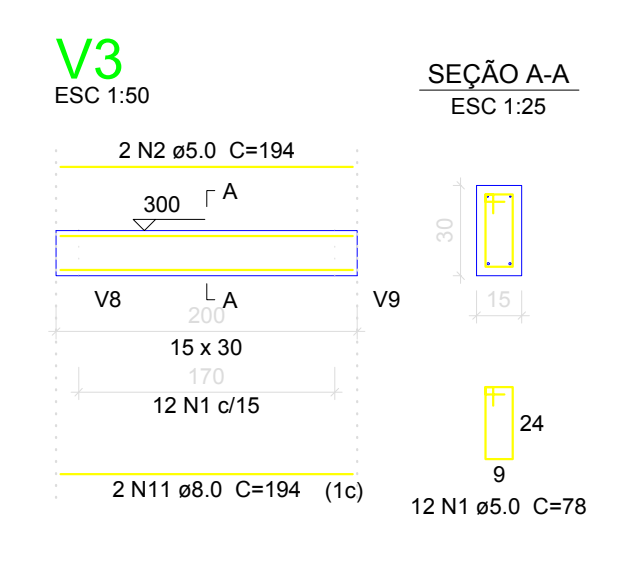
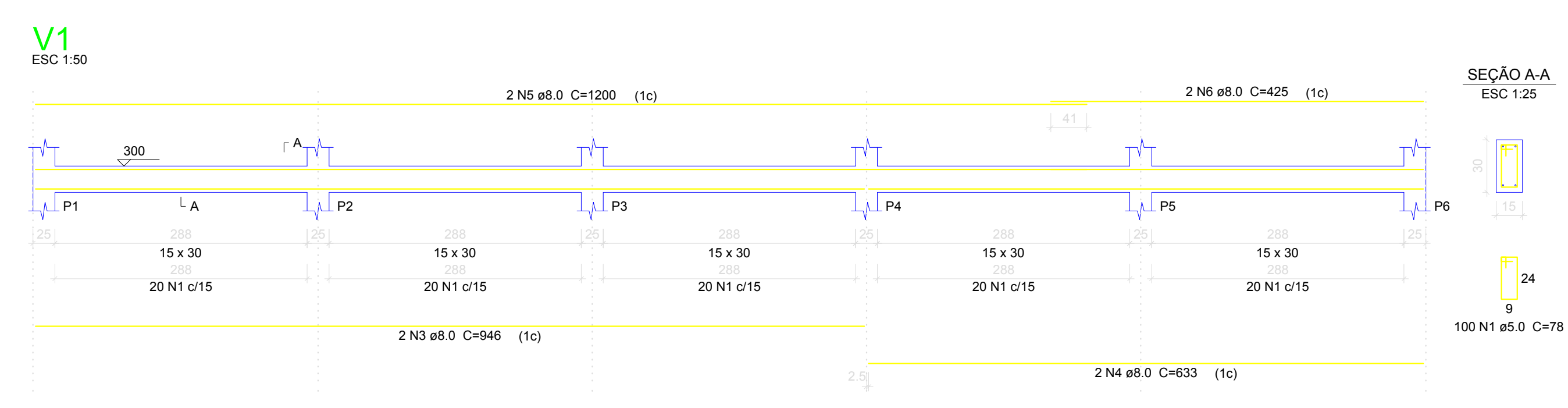
Vigas		
Nome	Seção (cm)	Elevação (cm)
V1	15x30	0 300
V2	15x30	0 300
V3	15x30	0 300
V4	15x30	0 300
V5	15x30	0 300
V6	15x30	0 300
V7	15x30	0 300
V8	15x30	0 300
V9	15x30	0 300
V10	15x30	0 300
V11	15x30	0 300
V12	15x30	0 300
V13	15x30	0 300
V14	15x30	0 300
V15	15x30	0 300
V16	15x30	0 300



Corte B-B escala 1:50



Corte C-C escala 1:50



Relação do aço				
ACO	N	DIAM (mm)	QUANT	C.TOTAL (cm)
CA60	1	5.0	671	82238
CA60	2	8.0	2	194
CA60	3	8.0	2	849
CA60	4	8.0	2	633
CA60	5	8.0	2	1200
CA60	6	8.0	2	425
CA60	7	8.0	2	1160
CA60	8	8.0	2	445
CA60	9	8.0	2	1198
CA60	10	8.0	2	465
CA60	11	8.0	2	194
CA60	12	8.0	2	452
CA60	13	8.0	2	464
CA60	14	8.0	2	210
CA60	15	8.0	2	230
CA60	16	8.0	2	1000
CA60	17	8.0	2	1020
CA60	18	8.0	1	225
CA60	19	8.0	2	921
CA60	20	8.0	2	656
CA60	21	8.0	4	748
CA60	22	8.0	4	788
CA60	23	8.0	4	595
CA60	24	8.0	2	623
CA60	25	8.0	2	659
CA60	26	8.0	2	258
CA60	27	8.0	2	659
CA60	28	8.0	8	372
CA60	29	8.0	2	428
CA60	30	8.0	1	105
CA60	31	8.0	1	104
CA60	32	8.0	2	411
CA60	33	8.0	3	415
CA60	34	8.0	3	416
CA60	35	8.0	1	115
CA60	36	10.0	2	1200
CA60	37	10.0	2	460

Resumo do aço		
ACO	DIAM (mm)	C.TOTAL (cm)
CA60	8.0	428.2
CA60	10.0	33.2
CA60	5.0	527.3
PESO TOTAL (kg)		
CA60	189.4	
CA60	81.3	

Volume de concreto (C-25) = 4.94 m³  
Área de forma = 82.41 m²

**ABRIGO DE ANIMAIS PROJETO ESTRUTURAL - ADM**

PROPRIETÁRIO: PREFEITURA MUNICIPAL DE CORUMBAIBA  
PROJETO / LOCAL: GO - 210, KM 2 - Fazenda Arrepimentos - Município de Corumbáiba - GO

PROPRIETÁRIO: FUNDO MUNICIPAL DE SAÚDE DE CORUMBAIBA  
CNPJ: 11178890/27

PROJETISTA: RYALON TEIXEIRA SANTOS  
CREA: 191827183-00

PLANTA DE LOCAÇÃO, DETALHAMENTO DAS ESTACAS DE FUNDAÇÃO E PILARES DOS MÚROS

Desenho: Luiz Pimenta | Revisão: 00 | FOLHA 03/04

Data: Março / 2024 | Escala: Indicada