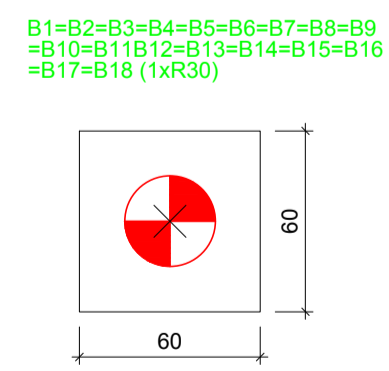


Planta de localização  
escala 1:50

Nome	Seção	X (cm)	Y (cm)	Pilar		Fundação				Bloco						
				Carga Máx. (tf)	Carga Min. (tf)	Mx (kgf.m)	My (kgf.m)	Fx (tf)	Fy (tf)	Lado B (cm)	Lado H (cm)	h0 / ha (cm)	h1 / hb (cm)	ne	Estaca	ca (cm)
P1	15x30	-2865.00	-7.50	4.8	0.0	0.0	0.0	0.8	2.1	60	60	30	55	1	R30	-70
P2	15x30	-2515.00	-9.00	3.8	3.7	0.0	0.0	0.4	0.1	60	60	30	55	1	R30	-70
P3	15x30	-2157.50	-7.50	6.9	6.2	0.0	0.0	0.1	2.7	60	60	30	55	1	R30	-70
P4	15x30	-1800.00	-9.00	3.7	3.7	0.0	0.0	0.3	0.1	60	60	30	55	1	R30	-70
P5	15x30	-1465.00	-7.50	4.7	4.4	0.0	0.0	0.7	2.2	60	60	30	55	1	R30	-70
P6	15x30	-2865.00	-497.50	6.6	5.6	0.0	0.0	0.8	2.6	60	60	30	55	1	R30	-75
P7	15x30	-2515.00	-496.00	3.8	3.7	0.0	0.0	0.4	0.1	60	60	30	55	1	R30	-70
P8	15x30	-2157.50	-497.50	6.9	6.3	0.0	0.0	0.2	2.8	60	60	30	55	1	R30	-70
P9	15x30	-1800.00	-496.00	3.7	3.6	0.0	0.0	0.3	0.1	60	60	30	55	1	R30	-70
P10	15x30	-1465.00	-497.50	6.6	5.6	0.0	0.0	0.7	2.8	60	60	30	55	1	R30	-75
P11	15x30	-2865.00	-647.50	1.1	0.0	0.0	0.0	0.2	0.4	60	60	30	55	1	R30	-70
P12	15x30	-2635.00	-647.50	3.1	1.9	0.0	0.0	0.7	0.5	60	60	30	55	1	R30	-70
P13	15x30	-2380.00	-647.50	3.6	1.9	0.0	0.0	0.7	0.6	60	60	30	55	1	R30	-70
P14	15x30	-2060.00	-646.00	1.9	1.9	0.0	0.0	0.4	0.1	60	60	30	55	1	R30	-70
P15	15x30	-1755.00	-646.00	2.1	2.1	0.0	0.0	0.2	0.1	60	60	30	55	1	R30	-70
P16	15x30	-1465.00	-647.50	1.8	0.0	0.0	0.0	0.3	0.5	60	60	30	55	1	R30	-70
P17	15x30	-2642.50	-790.00	2.7	1.5	0.0	0.0	0.9	0.3	60	60	30	55	1	R30	-70
P18	15x30	-2372.50	-790.00	2.9	1.2	0.0	0.0	1.0	0.3	60	60	30	55	1	R30	-70

Localização no eixo X			Localização no eixo Y		
Coordenadas (cm)	Nome	Nome	Coordenadas (cm)	Nome	Nome
-2865.00	P1, P6, P11	-7.50	P1, P3, P5		
-2642.50	P17	-9.00	P2, P4		
-2635.00	P12	-496.00	P7, P9		
-2515.00	P2, P7	-497.50	P6, P8, P10		
-2380.00	P13	-646.00	P14, P15		
-2372.50	P18	-647.50	P11, P12, P13, P16		
-2157.50	P3, P8	-790.00	P17, P18		
-2060.00	P14				
-1800.00	P4, P9				
-1755.00	P15				
-1465.00	P5, P10, P16				

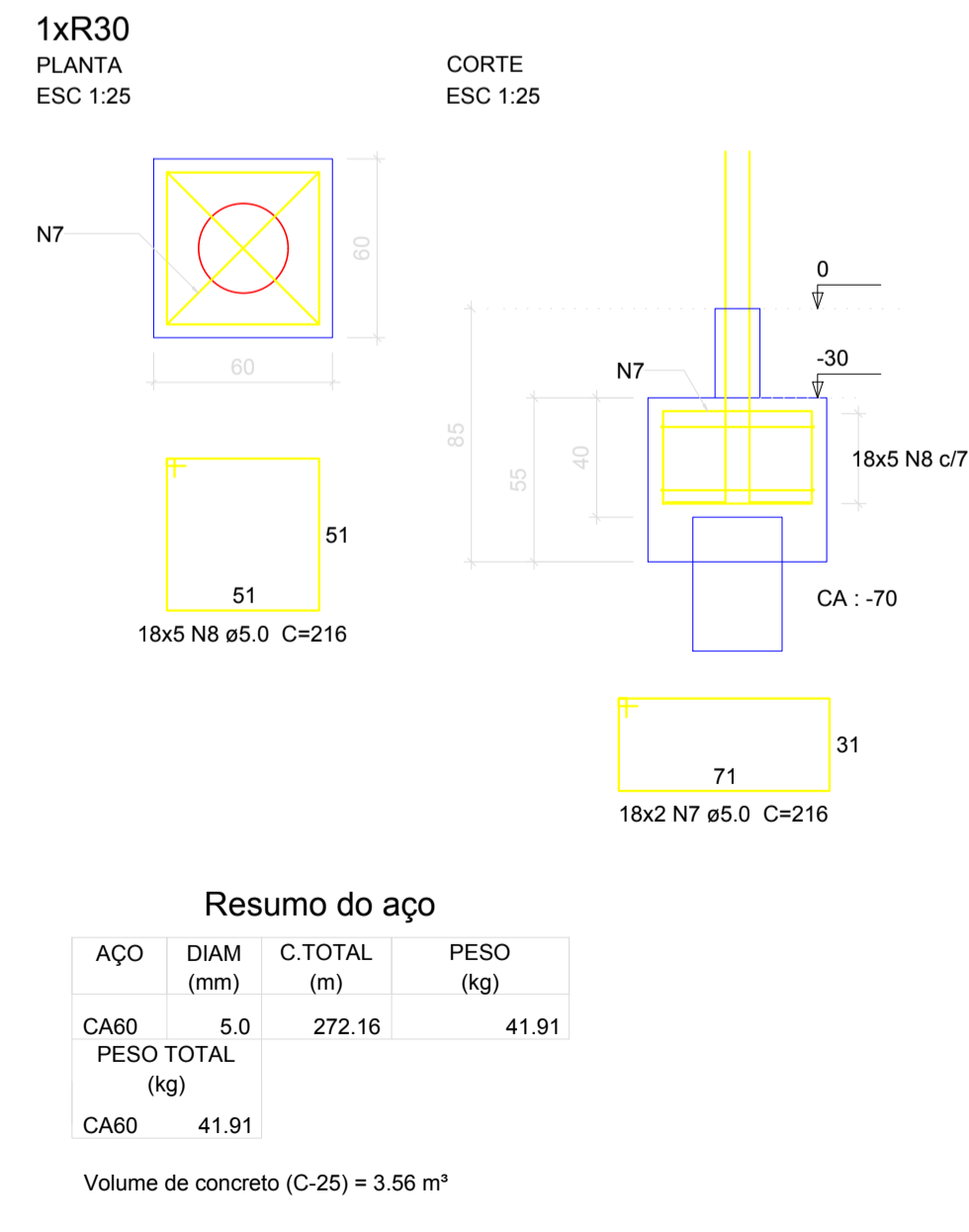
Estacas			
Simbologia	Nome	d (cm)	Quantidade
	R30	30.00	18



Legenda dos blocos  
escala 1:25

### BLOCOS DE FUNDAÇÃO

B1=B2=B3=B4=B5=B6=B7=B8=B9=B10=B11B12=B13=B14=B15=B16=B17=B18 (1xR30)

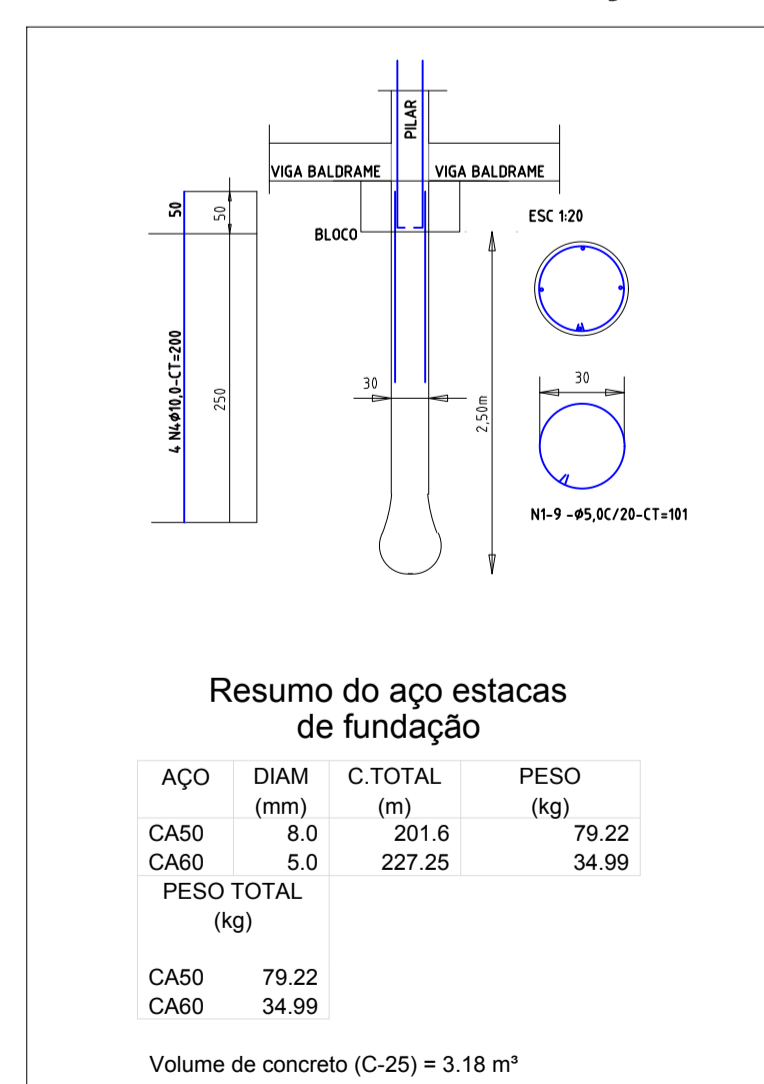


#### Resumo do aço

AÇO	DIAM (mm)	C.TOTAL (m)	PESO (kg)
CA50	8.0	201.6	79.22
CA60	5.0	272.16	41.91
<b>PESO TOTAL (kg)</b>			<b>121.13</b>
CA50			79.22
CA60			41.91

Volume de concreto (C-25) = 3.56 m³

### ESTACAS DE FUNDAÇÃO

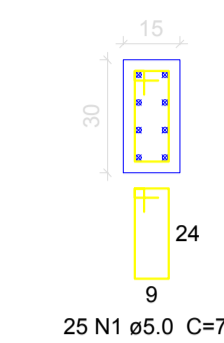


#### Resumo do aço estacas de fundação

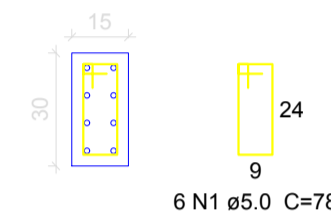
AÇO	DIAM (mm)	C.TOTAL (m)	PESO (kg)
CA50	8.0	201.6	79.22
CA60	5.0	227.25	34.99
<b>PESO TOTAL (kg)</b>			<b>114.21</b>
CA50			79.22
CA60			34.99

Volume de concreto (C-25) = 3.18 m³

P1=P5=P10  
TÉRREO - L2  
ESC 1:20



BALDRAME - L1  
ESC 1:20



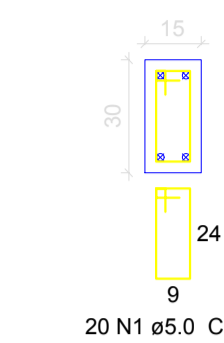
#### Relação do aço

AÇO	DIAM (mm)	C.TOTAL (m)	PESO (kg)
CA50	10.0	148.3	91.5
CA60	5.0	120	18.48
<b>PESO TOTAL (kg)</b>			<b>110</b>
CA50			91.5
CA60			18.48

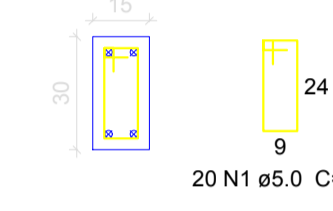
Volume de concreto (C-25) = 0.69 m³  
Área de forma = 10.97 m²

P2=P4=P7=P9=P11=P12=P13=P14=P15=P16=P17=P18

TÉRREO - L2  
ESC 1:20



BALDRAME - L1  
ESC 1:20

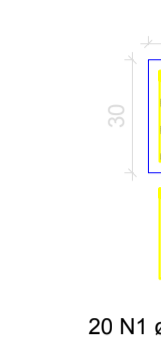


#### Relação do aço

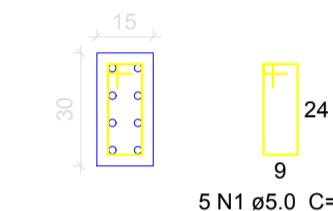
AÇO	DIAM (mm)	C.TOTAL (m)	PESO (kg)
CA50	10.0	90.7	55.96
CA60	5.0	129.2	19.89
<b>PESO TOTAL (kg)</b>			<b>75.85</b>
CA50			55.96
CA60			19.89

Volume de concreto (C-25) = 0.70 m³  
Área de forma = 11.03 m²

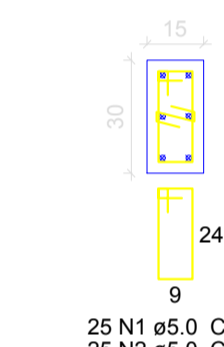
P3=P8  
TÉRREO - L2  
ESC 1:20



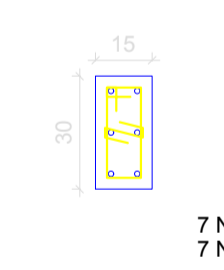
BALDRAME - L1  
ESC 1:20



P6  
TÉRREO - L2  
ESC 1:20



BALDRAME - L1  
ESC 1:20



## PROJETO ESTRUTURAL

PROPRIETÁRIO: PREFEITURA MUNICIPAL DE CORUMBÁIBA  
PROJETO / LOCAL: Reforma e Ampliação Escola Municipal Prof. Alberto de Moraes Holanda de Corumbáiba - GO  
Rodovia Go 139, Km 75 - Zona Rural - Município de Corumbáiba - GO

PROPRIETÁRIO: PREFEITURA MUNICIPAL DE CORUMBÁIBA  
CNPJ: 01.302.603/0001-00

PROJETISTA: LUIZ GUSTAVO PIMENTA DE PÁDUA  
CREA: 148841 / D - MG

PLANTA DE LOCAÇÃO E DET. DOS BLOCOS E ESTACAS DE FUNDAÇÃO E PRUMADA DOS PILARES

Desenho: Luiz Pimenta Revisão: 00

Data: Fevereiro / 2022 Escala: Indicada

FOLHA  
01/03

